

# Frame Fit Specifications

## ROAD CRANKSETS

The benefits SRAM 1x10, 2x10, and 3x10 delivers—a full range of usable gears, less weight, easier and smoother shifting in all terrains—are becoming understood by riders of all levels, not just pros. To fully appreciate how SRAM 1x10, 2x10, and 3x10 can help you make the most of your ride, we wanted to provide a resource with the crankset specifications you need to deliver the benefits of a 1x10, 2x10, or 3x10 drivetrain to your customers.

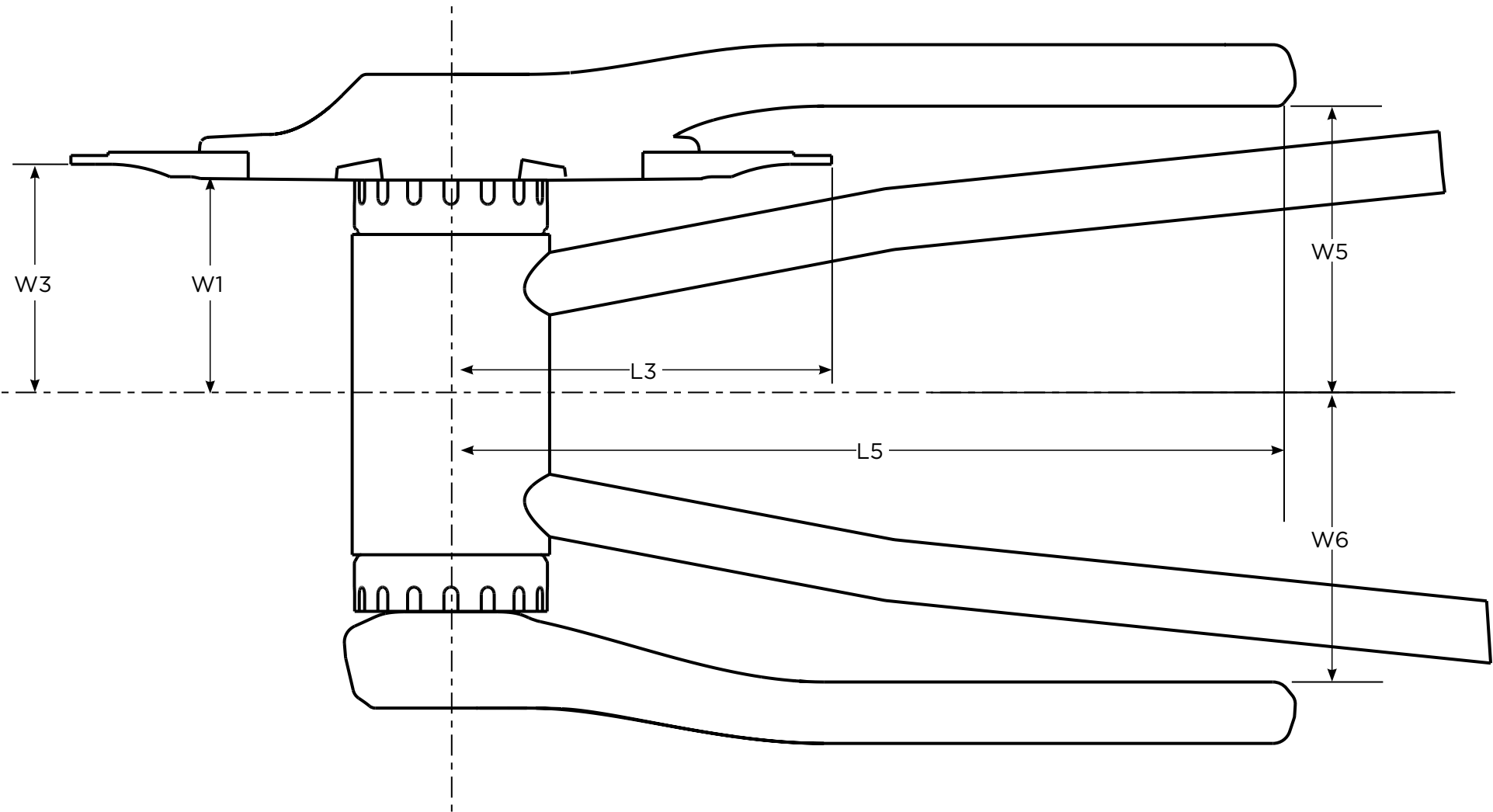
**SRAM**<sup>®</sup>

# Table of Contents

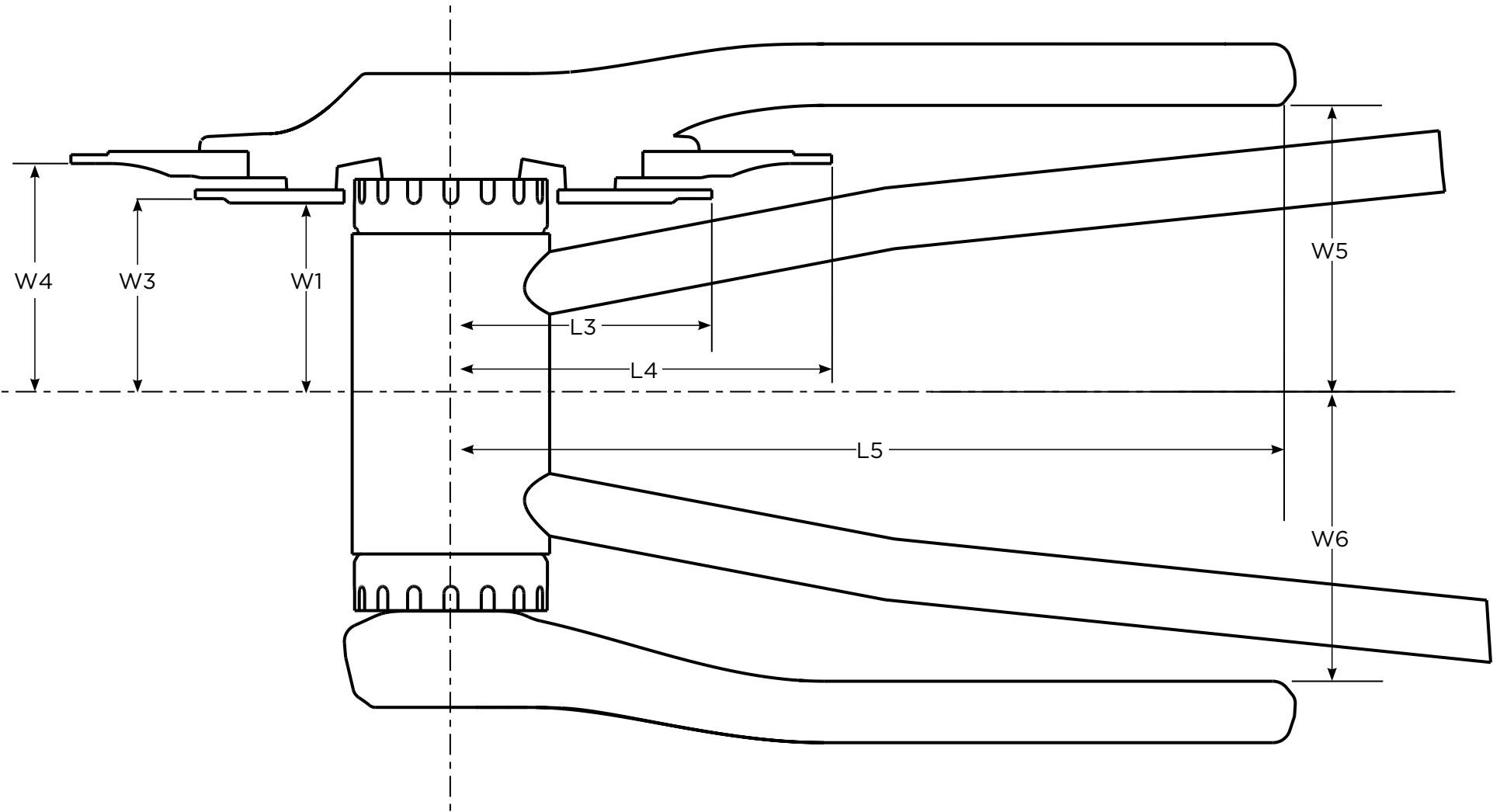
<b>DIAGRAMS</b> .....	<b>3</b>
MEASUREMENT DIAGRAM [1X10].....	4
MEASUREMENT DIAGRAM [2X10].....	5
MEASUREMENT DIAGRAM [3X10].....	6
<b>CRANKSETS</b> .....	<b>7</b>
RED 2012 [2X10] .....	8
RED 2011 BLACK EDITION CRANKSETS [2X10] .....	9
FORCE CRANKSETS [2X10].....	10
RIVAL OCT/ROULEUR OCT CRANKSETS [2X10].....	11
RIVAL OCT/ROULEUR OCT CRANKSETS [3X10].....	12
S900/S950/S975 CRANKSETS [2X10] .....	13
ROULEUR/S500/S550 CRANKSETS [2X10] .....	14
ROULEUR/S500/S550 CRANKSETS [3X10] .....	15
APEX/ELITA/S300/S350 CRANKSETS [1X10] .....	16
APEX/ELITA/S300/S350 CRANKSETS [2X10].....	17
APEX/ELITA/S300/S350 CRANKSETS [3X10].....	18
TOURO/S100/S150 CRANKSETS [1X10].....	19
TOURO/S100/S150 CRANKSETS [2X10] .....	20
ISOFLOW CRANKSETS [1X10].....	21
ISOFLOW CRANKSETS [2X10].....	22
OMNIUM CRANKSETS [1X10].....	23

# Diagrams

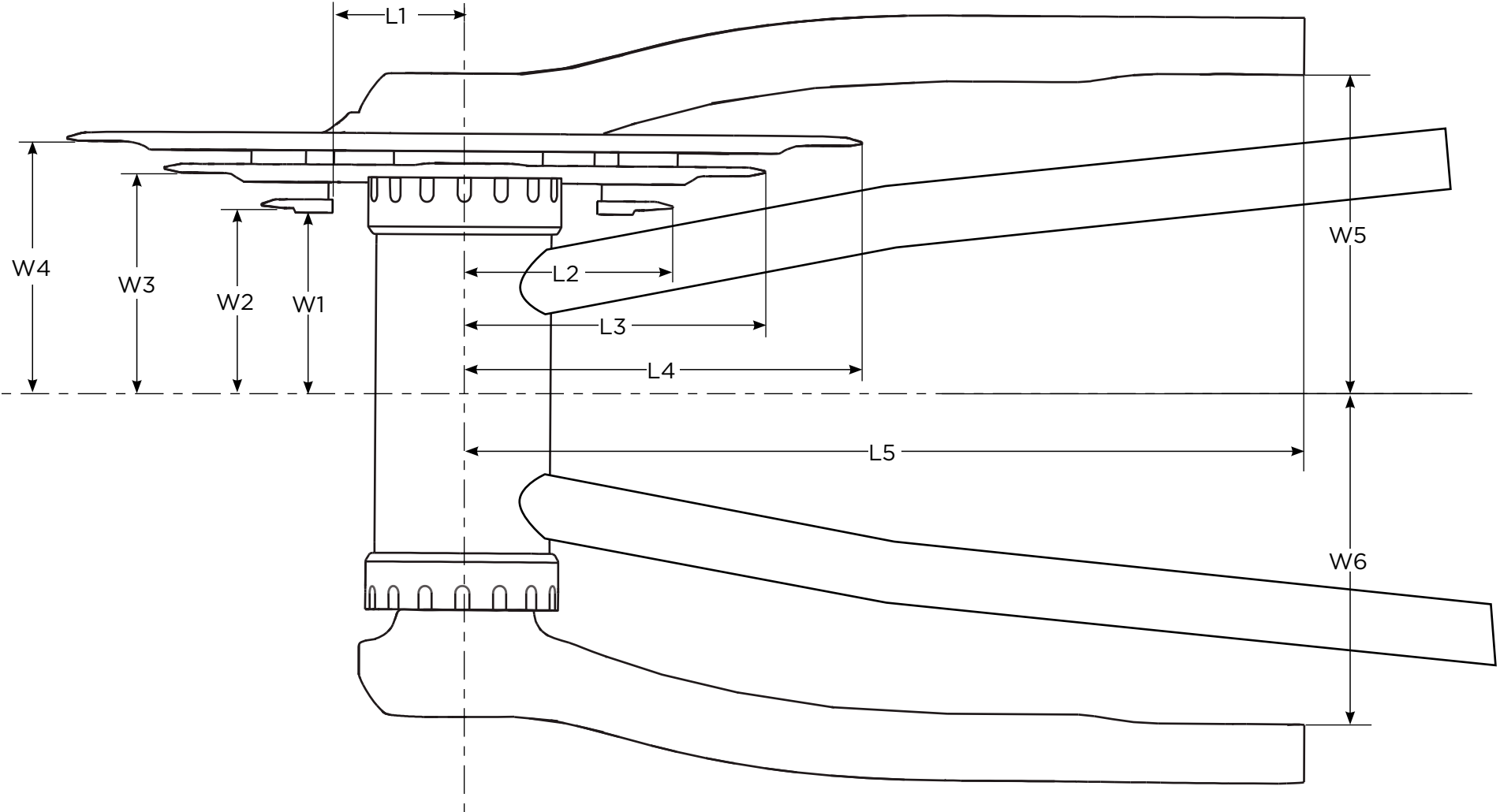
# Measurement Diagram [1x10]



# Measurement Diagram [2x10]



# Measurement Diagram [3x10]



# Cranksets

# Red 2012 [2x10]

CRANKSET FRAME CLEARANCE INFORMATION									
Chain Ring Combination	L3	L4	L5	W1	W3	W4	W5 (min)	W6 (min)	
CRANKSET	53/39	80.9 mm	109.2 mm	197 mm	39.2 mm	40.3 mm	48.1 mm	59.9 mm	59.9 mm
	50/34	70.9 mm	103.2 mm						
<b>Q-factor</b> : 145 mm									
<b>Bottom Bracket Type(s)</b> : GXP : PressFit GXP : BB30 : PressFit 30									

# Red 2011 Black Edition Cranksets [2x10]

CRANKSET FRAME CLEARANCE INFORMATION									
Chain Ring Combination	L3	L4	L5	W1	W3	W4	W5 (min)	W6 (min)	
53/39 (53/39TT)	80.9 mm	109.2 mm	197 mm	40.5 mm	41.5 mm	47.5 mm	60 mm	60.3 mm GXP : PFGXP	60 mm BB30 : PF30
54/42TT	88 mm	112.7 mm							
55/42TT		114.8 mm							
50/34	70.9 mm	103.2 mm							
52/36	74.9 mm	107.2 mm							
52/38	78.9 mm								
46/36	74.9 mm	95.1 mm							
<b>Q-factor</b> : 145.3 mm (GXP : PFGXP) : 145 mm (BB30 : PF30)									
<b>Bottom Bracket Type(s)</b> : GXP : PressFit GXP : BB30 : PressFit 30									

# Force Cranksets [2x10]

CRANKSET FRAME CLEARANCE INFORMATION										
Chain Ring Combination	L3	L4	L5	W1	W3	W4	W5 (min)		W6 (min)	
53/39	80.9 mm	109.2 mm	197.2 mm	40.5 mm	41.5 mm	47.5 mm	61 mm GXP : PFGXP	60 mm BB30 : PF30	61.2 mm GXP : PFGXP	60 mm BB30 : PF30
54/42TT	88 mm	112.7 mm								
55/42TT		114.8 mm								
50/34	70.9 mm	103.2 mm								
52/36	74.9 mm	107.2 mm								
52/38	78.9 mm									
48/34	70.9 mm	99 mm								
46/36	74.9 mm	95.1 mm								
<b>Q-factor</b> : 149.2 mm (GXP : PFGXP) : 145 mm (BB30 : PF30)										
<b>Bottom Bracket Type(s)</b> : GXP : PressFit GXP : BB30 : PressFit 30										

# Rival OCT/Rouleaur OCT Cranksets [2x10]

CRANKSET FRAME CLEARANCE INFORMATION									
Chain Ring Combination	L3	L4	L5	W1	W3	W4	W5 (min)	W6 (min)	
CRANKSET	53/39	80.9 mm	109.2 mm	196 mm	40.5 mm	41.5 mm	47.5 mm	61 mm	61 mm
	50/36	74.9 mm	103.2 mm						
	50/34	70.9 mm							
	48/34		99 mm						
	46/38	78.9 mm	95.1 mm						
	46/36	74.9 mm							
<b>Q-factor : 147 mm</b>									
<b>Bottom Bracket Type : GXP : PressFit GXP</b>									

# Rival OCT/Rouleur OCT Cranksets [3x10]

CRANKSET FRAME CLEARANCE INFORMATION										
Chain Ring Combination	L1	L2	L3	L4	L5	W1	W3	W4	W5 (min)	W6 (min)
52/39/30	56 mm	62.8 mm	80.9 mm	107.2 mm	196 mm	40.5 mm	41.5 mm	47.5 mm	65.2 mm	61 mm
										<b>Q-factor</b> : 151.2 mm
										<b>Bottom Bracket Type</b> : GXP : PressFit GXP

CRANKSET

# S900/S950/S975 Cranksets [2x10]

CRANKSET FRAME CLEARANCE INFORMATION								
Chain Ring Combination	L3	L4	L5	W1	W3	W4	W5 (min)	W6 (min)
53/39	80.9 mm	109.2 mm	196.1 mm	40.5 mm	41.5 mm	47.5 mm	60 mm	60 mm
54/42TT	88 mm	112.7 mm						
55/42TT		114.8 mm						
50/34	70.9 mm	103.2 mm						
52/36	74.9 mm	107.2 mm						
52/38	78.9 mm							
48/34	70.9 mm	99 mm						
46/38	78.9 mm	95.1 mm						
46/36	74.9 mm							
<b>Q-factor</b> : 145 mm								
<b>Bottom Bracket Type(s)</b> : GXP : PressFit GXP : BB30 : PressFit 30								

# Rouleir/S500/S550 Cranksets [2x10]

CRANKSET FRAME CLEARANCE INFORMATION									
Chain Ring Combination	L3	L4	L5	W1	W3	W4	W5 (min)	W6 (min)	
CRANKSET	53/39	80.9 mm	109.2 mm	195.2 mm	40.5 mm	41.5 mm	47.5 mm	60 mm	60 mm
	50/36	74.9 mm	103.2 mm						
	50/34	70.9 mm							
	48/34		99 mm						
	46/38	78.9 mm	95.1 mm						
	46/36	74.9 mm							
<b>Q-factor</b> : 145 mm									
<b>Bottom Bracket Type(s)</b> : GXP : PressFit GXP : BB30 : PressFit 30									

# Rouleir/S500/S550 Cranksets [3x10]

CRANKSET FRAME CLEARANCE INFORMATION											
Chain Ring Combination	L1	L2	L3	L4	L5	W1	W2	W3	W4	W5 (min)	W6 (min)
52/39/30	56 mm	62.8 mm	80.9 mm	107.2 mm	195.2 mm	36.6 mm	37.6 mm	45.5 mm	51.3 mm	65 mm	60 mm
											<b>Q-factor</b> : 150 mm
											<b>Bottom Bracket Type(s)</b> : GXP : PressFit GXP

CRANKSET

# Apex/Elita/S300/S350 Cranksets [1x10]

CRANKSET FRAME CLEARANCE INFORMATION							
Chain Ring Combination	L3	L5	W1	W3	W5	W6 (min)	
CRANKSET	48	99.1 mm	196.7 mm	40.5 mm	41.5 mm	60 mm	61 mm
						GXP : PFGXP	BB30 : PF30
	<b>Q-factor</b> : 145 mm (GXP : PFGXP) ; 146 mm (BB30 : PF30)						
<b>Bottom Bracket Type(s)</b> : GXP : PressFit GXP : BB30 : PressFit 30							

# Apex/Elita/S300/S350 Cranksets [2x10]

CRANKSET FRAME CLEARANCE INFORMATION										
Chain Ring Combination	L3	L4	L5	W1	W3	W4	W5	W6 (min)		
CRANKSET	53/39	80.9 mm	109.2 mm	196.7 mm	40.5 mm	41.5 mm	47.5 mm	60 mm	60 mm GXP : PFGXP	61 mm BB30 : PF30
	50/36	74.9 mm	103.2 mm							
	50/34	70.9 mm								
	48/34		99 mm							
	46/38	79 mm	95.1 mm							
	48/39	80.9 mm	99.1 mm							
	46/36	74.9 mm	95.1 mm							
<b>Q-factor</b> : 145 mm (GXP: PFGXP) : 146 mm (BB30 : PF30)										
<b>Bottom Bracket Type(s)</b> : GXP : PressFit GXP : BB30 : PressFit 30										

# Apex/Elita/S300/S350 Cranksets [3x10]

CRANKSET FRAME CLEARANCE INFORMATION											
Chain Ring Combination	L1	L2	L3	L4	L5	W1	W2	W3	W4	W5	W6 (min)
CRANKSET	52/39/30	56 mm	62.8 mm	80.9 mm	107.2 mm	196.7 mm	36.6 mm	37.6 mm	45.5 mm	51.3 mm	65 mm
	50/39/30				103.1 mm						
											<b>Q-factor</b> : 155 mm
<b>Bottom Bracket Type(s)</b> : GXP : PressFit GXP											

# Touro/S100/S150 Cranksets [1x10]

CRANKSET FRAME CLEARANCE INFORMATION								
Chain Ring Combination	L3	L4	L5	W1	W3	W4	W5 (min)	W6 (min)
CRANKSET	48	99.1 mm		109.5	40.5	41.5	61 mm	59 mm
	G52	107.2 mm	112.5 mm					
<b>Q-factor</b> : 145 mm								
<b>Bottom Bracket Type</b> : Powerspline								

# Touro/S100/S150 Cranksets [2x10]

CRANKSET FRAME CLEARANCE INFORMATION								
Chain Ring Combination	L3	L4	L5	W1	W3	W4	W5 (min)	W6 (min)
53/39	80.9 mm	109.2 mm	190.5 mm	40.5 mm	41.5 mm	47.5 mm	61 mm	59 mm
50/34	70.9 mm	103.2 mm						
48/34		99 mm						
46/36	74.9 mm	95.1 mm						
<b>Q-factor</b> : 145 mm								
<b>Bottom Bracket Type</b> : Powerspline								

# IsoFlow Cranksets [1x10]

CRANKSET FRAME CLEARANCE INFORMATION								
Chain Ring Combination	L3	L4	L5	W1	W3	W4	W5 (min)	W6 (min)
G52	107.2 mm	112.5 mm	191.8 mm	40.5 mm	41.5 mm	47.5 mm	61 mm	59 mm
							<b>Q-factor : 145 mm</b>	
							<b>Bottom Bracket Type : Powerspline</b>	

CRANKSET

# IsoFlow Cranksets [2x10]

CRANKSET FRAME CLEARANCE INFORMATION								
Chain Ring Combination	L3	L4	L5	W1	W3	W4	W5 (min)	W6 (min)
50/34	70.9 mm	103.2 mm	191.8 mm	40.5 mm	41.5 mm	47.5 mm	61 mm	59 mm
							<b>Q-factor</b> : 145 mm	
							<b>Bottom Bracket Type</b> : Powerspline	

# Omnium Cranksets [1x10]

CRANKSET FRAME CLEARANCE INFORMATION						
Chain Ring Combination	L3	L5	W1	W3	W5 (min)	W6 (min)
48	99.1 mm	195.4 mm	36 mm	37 mm	55 mm	54.7 mm
						<b>Q-factor</b> : 134.7 mm
						<b>Bottom Bracket Type</b> : GXP : PressFit GXP

***SRAM***®