

ROCKSHOX

PIKE

REVELATION

2019-2022 PIKE
2019-2023 REVELATION



SERVICE MANUAL



SAFETY FIRST!

We care about YOU. Please, always wear your safety glasses and protective gloves when servicing RockShox products.

Protect yourself! Wear your safety gear!

⚠ WARNING - PRESSURIZED DEVICE

Suspension products may contain pressurized air, nitrogen, springs, and oil.

Always wear certified safety glasses (ANSI Z87.1, EN166 EU) when performing any service on a suspension product (suspension fork, rear shock, seatpost).

Failure to wear proper safety glasses can result in **SERIOUS INJURY OR DEATH**.

RockShox Service

We recommend that you have your RockShox suspension serviced by a qualified bicycle mechanic. Servicing RockShox suspension requires knowledge of suspension components, as well as the use of specialized tools and lubricants/fluids. Failure to follow the procedures outlined in this service manual may cause damage to your component and void the warranty.

Visit www.sram.com/service for the latest *RockShox Spare Parts Catalog* and technical information. For order information, please contact your local SRAM distributor or dealer.

Information contained in this publication is subject to change at any time without prior notice.

Your product's appearance may differ from the pictures contained in this publication.



For recycling and environmental compliance information, please visit: www.sram.com/en/company/about/environmental-policy-and-recycling.

Suspension Safety Precautions and Warnings

SAFETY INSTRUCTIONS

To avoid serious injury or death, you **MUST** understand and follow the safety information in this document.

WARNING - PRESSURIZED DEVICE

Suspension products may contain pressurized air, nitrogen, springs, and oil.

Always wear certified safety glasses (ANSI Z87.1, EN166 EU) when performing any service on a suspension product (suspension fork, rear shock, seatpost).

DO NOT attempt to disassemble a suspension product before the product is fully depressurized. Follow depressurization procedures and remove the air valve as instructed, before attempting disassembly of a suspension product.

When performing service on a suspension product, keep your eyes, face, and body away from any part or lubricant that can suddenly eject under high pressure. DO NOT direct any pressurized suspension part at a person.

DO NOT attempt to puncture, crush, or incinerate any assembled suspension product.

Failure to follow these preventative measures can result in SERIOUS INJURY OR DEATH.

WARNING - CRASH HAZARD

Parts must be tightened to the specified torque.

To avoid separation of parts, threadlocker must be applied as instructed. Failure to apply threadlocker could result in separation of the parts. Retaining rings must be fully seated in the retaining ring groove. Confirm the retaining ring is fully seated in the retaining ring groove after installation.

Do not use vinegar of any type to clean any part of a RockShox suspension product. Vinegar can cause permanent damage to parts which can, over time, result in product structural failure.

Failure to follow these preventative measures can result in SERIOUS INJURY OR DEATH.

WARNING

Do not ingest oil, fluid, grease, lubricant, or cleaner. Ingestion could lead to SERIOUS INJURY OR DEATH. Seek immediate medical attention if any oil, fluid, grease, lubricant, or cleaner is ingested.

CAUTION

Suspension products may contain lubricants which can lead to skin irritation. Always wear nitrile gloves when servicing suspension products. Failure to properly protect your skin can result in irritation. Seek medical attention if your skin is adversely affected by any suspension oil, fluid, grease, lubricant, and/or cleaner.

Always wear safety glasses. Do not allow oil, fluid, grease, lubricant, or cleaner to contact your eyes or face. Seek immediate medical attention if irritation occurs.

Use care when working with sharp tools and parts. Never use sharp tools coated with oil and/or grease. Clean and remove all oil and/or grease from your hands and gloves, and tools before working with any sharp tool or part. Failure to do so can result in personal injury.

Place an oil pan on the floor underneath the product during service to catch any drained or spilled fluids. To avoid a slip and fall, and possible injury or harm, immediately clean any oil, fluid, grease, or lubricant from the floor in your work area.

TABLE OF CONTENTS

ROCKSHOX SERVICE.....	3
SUSPENSION SAFETY PRECAUTIONS AND WARNINGS	3
PART PREPARATION AND SERVICE PROCEDURES	5
PART PREPARATION	5
SERVICE PROCEDURES.....	5
MODEL CODE IDENTIFICATION	6
WARRANTY AND TRADEMARK.....	6
PARTS, TOOLS, AND SUPPLIES.....	7
RECOMMENDED SERVICE INTERVALS.....	8
RECORD YOUR SETTINGS.....	8
TORQUE VALUES	9
OIL VOLUME AND LUBRICANT	10
EXPLODED VIEW	11
2021-2022 (B4) PIKE ULTIMATE (RC2)	11
2020 (B3) PIKE ULTIMATE (RC2).....	12
2021-2022 (B4) PIKE ULTIMATE (RCT3).....	13
2019 (B2) PIKE RCT3 / 2020 (B3) PIKE ULTIMATE (RCT3).....	14
2021-2022 (B4) PIKE SELECT+.....	15
2019 (B2) PIKE RC / 2020 (B3) PIKE SELECT+.....	16
2021-2022 (B4) PIKE SELECT.....	17
2020 (B3) PIKE SELECT	18
2019 (A1) REVELATION CHARGER DAMPER RC.....	19
2021-2023 (A3) REVELATION RC	20
2019-2020 (A2) REVELATION RC.....	21
LOWER LEG REMOVAL AND SERVICE.....	22
50/200 HOUR SERVICE	
LOWER LEG REMOVAL	22
50 HOUR SERVICE	
LOWER LEG SERVICE.....	25
200 HOUR SERVICE	
LOWER LEG SEAL SERVICE	27
AIR SPRING SERVICE.....	30
AIR SPRING REMOVAL	30
AIR SPRING TRAVEL CHANGE AND BOTTOMLESS TOKENS (OPTIONAL).....	34
DEBONAIR - TRAVEL AND BOTTOMLESS TOKEN TUNING - PIKE.....	34
DEBONAIR - TRAVEL AND BOTTOMLESS TOKEN TUNING - REVELATION.....	35
BOTTOMLESS TOKENS INSTALLATION (OPTIONAL)	35
AIR SPRING INSTALLATION.....	36
CHARGER 2 DAMPER/CHARGER 2.1 DAMPER SERVICE	41
DAMPER REMOVAL	41
DAMPER SERVICE.....	45
DAMPER ASSEMBLY	49
DAMPER BLEED	51
TEST LOCKOUT OR COMPRESSION	54
DAMPER INSTALLATION.....	55
CHARGER DAMPER RC SERVICE	60
DAMPER REMOVAL	60
DAMPER SERVICE.....	62
DAMPER ASSEMBLY	66
TEST COMPRESSION.....	70
DAMPER INSTALLATION.....	71
MOTION CONTROL DAMPER SERVICE	73
DAMPER REMOVAL	73
DAMPER SERVICE.....	77
REBOUND DAMPER INSTALLATION.....	80
COMPRESSION DAMPER INSTALLATION.....	82
LOWER LEG ASSEMBLY.....	85
50/200 HOUR SERVICE	
LOWER LEG INSTALLATION	85

Part Preparation

Remove the component from the bicycle before service.

Disconnect and remove the remote cable or hydraulic hose from the fork or rear shock, if applicable. For additional information about RockShox remotes, user manuals are available at www.sram.com/service.

Clean the exterior of the product with mild soap and water to avoid contamination of internal sealing part surfaces.

Service Procedures

The following procedures should be performed throughout service, unless otherwise specified.

Clean the part with RockShox Suspension Cleaner or isopropyl alcohol and a clean, lint-free shop towel. For hard to reach places (e.g. upper tube, lower leg), wrap a clean, lint-free shop towel around a non-metallic dowel to clean the inside.

Clean the sealing surface on the part and inspect it for scratches.

⚠ WARNING - CRASH HAZARD

DO NOT use vinegar of any type to clean any part of a RockShox suspension product. Vinegar can cause permanent damage to parts which can, over time, result in product structural failure, serious injury, and possibly death.



Replace the o-ring or seal with a new one from the service kit. Use your fingers or a pick to pierce and remove the old seal or o-ring.

Apply grease to the new seal or o-ring.

NOTICE

Do not scratch any sealing surfaces when servicing the product. Scratches can cause leaks. Consult the spare parts catalog to replace the damaged part.



Use aluminum soft jaws when placing a part in a bench vise.

Tighten the part with a torque wrench to the torque value listed in the red bar. When using a crowfoot socket and torque wrench, install the crowfoot socket at 90 degrees to the torque wrench.

⚠ WARNING - CRASH HAZARD

Parts must be tightened to the specified torque. Failure to do so can result in SERIOUS INJURY OR DEATH.



Model Code Identification

Product model code and specification details can be identified with the serial number on the product. Model codes can be used to identify the product type, series name, model name, and product version associated with the production model year. Product details can be used to identify spare parts, service kit, and lubricant compatibility.

Model Code example: **FS-PIKE-ULT-B4**

FS = Product Type - **Front Suspension**

PIKE = Platform/Series - **Pike**

ULT = Model - **Ultimate**

B4 = Version - (**B** - second generation, **4** - forth iteration)

To identify the model code, locate the serial number on the product and enter it into the **Search by Model Name or Serial Number** field at www.sram.com/service.

Warranty and Trademark

For SRAM Warranty information, visit: www.sram.com/warranty.

For SRAM Trademark information, visit: www.sram.com/website-terms-of-use.

Parts, Tools, and Supplies

Parts

- RockShox 2019-2020 Pike or Revelation 200 Hour Service Kit
- RockShox 2021-2022 Pike or 2021-2023 Revelation 200 Hour Service Kit

Safety and Protection Supplies

- Apron
- Clean, lint-free shop towels
- Nitrile gloves
- Oil pan
- Safety glasses

Lubricants and Fluids

- Loctite 2760 High Strength Threadlocker Red
- Maxima PLUSH Dynamic Suspension Lube Heavy or RockShox 0w-30 Suspension Oil
- Maxima PLUSH Dynamic Suspension Lube Light or RockShox 0w-30 Suspension Oil
- Maxima PLUSH 3wt or RockShox 3wt Suspension Oil (Charger Damper RC, Charger 2 Damper, Charger 2.1 Damper)
- RockShox 5wt Suspension Oil (Motion Control)
- RockShox Suspension Cleaner or Isopropyl alcohol
- RockShox Dynamic Seal Grease or SRAM Butter Grease

RockShox Tools

- RockShox Bleed Syringe
- RockShox Charger RC/RL Vise Blocks (Charger Damper RC)
- RockShox Dust Seal Installation tool (35 mm) or [RockShox x Abbey Bike Tools 35 mm Flangeless Dust Seal Installation Tool](#)
- RockShox Shock Pump
- RockShox Top Cap/Cassette tool (3/8" / 24 mm) or [RockShox x Abbey Bike Tools Top Cap/Cassette Tool](#)
- RockShox Schrader Valve Tool

Bicycle Tools

- Bicycle work stand
- Cassette tool
- Downhill tire lever
- Shock pump

Common Tools

- Air compressor with air gun nozzle
- Bench vise and aluminum soft jaw inserts
- Crowfoot: 23 mm
- Hex bit sockets: 2, 2.5, 5, 6 mm
- Hex wrenches: 2, 2.5, 5, 8 mm
- Internal retaining ring pliers - large
- Long plastic or wooden dowel
- Needle nose pliers
- Open end wrenches: 12, 23 mm
- Pick
- Rubber or plastic mallet
- Sockets: 10, 12, 13, 24 mm or [RockShox x Abbey Bike Tools 24 mm Socket](#)
- Socket wrench
- T10 TORX wrench and bit socket
- Torque wrench

SAFETY INSTRUCTIONS

Always wear safety glasses and nitrile gloves when working with suspension oil.

Place an oil pan on the floor underneath the area where you will be working on the suspension fork.

⚠ CAUTION

Place an oil pan on the floor underneath the product during service to catch any drained or spilled fluids. To avoid a slip and fall, and possible injury or harm, immediately clean any oil, fluid, grease, or lubricant from the floor in your work area.

NOTICE

Inspect each part for scratches. Do not scratch any sealing surfaces when servicing your suspension. Scratches can cause leaks.

When replacing seals and o-rings, use your fingers or a pick to remove the seal or o-ring. Spray isopropyl alcohol on each part and clean with a clean lint-free rag.

Apply RockShox Dynamic Seal Grease or SRAM Butter grease to the new seals and o-rings.



RockShox Dynamic Seal Grease or SRAM Butter Grease

Recommended Service Intervals

Regular service is required to keep your RockShox product working at peak performance. Follow this maintenance schedule and install the service parts included in each service kit that corresponds with the Service Hours Interval recommendation below. For spare part kit contents and details, refer to the RockShox Spare Parts Catalog at www.sram.com/service.

Service Hours Interval	Maintenance	Benefit
Every ride	Clean dirt from upper tubes and wiper seals	Extends wiper seal lifespan
		Minimizes damage to upper tubes
		Minimizes lower leg contamination
Every 50 hours	Perform lower leg service	Restores small bump sensitivity
		Reduces friction
		Extends bushing lifespan
Every 200 hours	Perform damper and spring service	Extends suspension lifespan
		Restores small bump sensitivity
		Restores damping performance

Record Your Settings

Use the table below to record your suspension settings to return your suspension to its pre-service settings. Record your service dates to track service intervals.

Service Hours Interval	Date of Service	Air Pressure	Rebound setting - Count the number of clicks while turning the rebound adjuster fully counter-clockwise.	Low (LSC) and High (HSC) Speed Compression settings - Count the number of clicks while turning the compression adjusters fully counter-clockwise.	
				LSC	HSC (RC2)
50					
100					
150					
200					

Torque Values

Part	Tool	Torque
Air spring shaft nut	8 mm hex and 12 mm socket	3.3 N•m (29 in-lb)
Bleed screw - rebound damper seal head (Charger 2 Damper and Charger 2.1 Damper - Pike)	T10 TORX bit socket	1.7 N•m (15 in-lb)
Bottom bolts	5 mm hex bit socket	7.3 N•m (65 in-lb)
Bottomless Tokens	8 mm hex and 24 mm socket or RockShox Top Cap/Cassette Tool (or standard cassette tool)	4 N•m (35 in-lb)
Compression damper - cartridge tube (Charger Damper RC - Revelation)	24 mm socket or RockShox Top Cap/Cassette Tool (or standard cassette tool)	9 N•m (80 in-lb)
Retaining screw - compression knob and remote spool (Charger 2 Damper and Charger 2.1 Damper - Pike)	2 mm hex bit socket	1.2 N•m (10 in-lb)
Retaining screw - compression knob and remote spool (Charger Damper RC - Revelation)	2.5 mm hex bit socket	1.4 N•m (12 in-lb)
Retaining screw - compression knob and remote spool (Motion Control - Revelation)	2.5 mm hex bit socket	1.2 N•m (10 in-lb)
Seal head - rebound damper (Charger 2 Damper and Charger 2.1 Damper - Pike)	23 mm crowfoot socket	5.1 N•m (45 in-lb)
Set screw - rebound adjuster knob	2.5 mm hex bit socket	0.9 N•m (8 in-lb)
Set screw - remote cable stop collar	2 mm hex bit socket	0.4 N•m (4 in-lb)
Top caps	24 mm socket or RockShox Top Cap/Cassette Tool (or standard cassette tool)	28 N•m (250 in-lb)

			Damper				Spring								
Model Year	Fork	Model	Damper	Upper Tube			Lower Leg		Spring	Upper Tube				Lower Leg	
				Oil Weight	Oil Height* (mm)	Volume (mL)	Oil**	Volume (mL)		Oil**	Volume (mL)		Grease	Oil**	Volume (mL)
											(+)	(-)			
2019	Pike	RCT3 RCT R† RC RC R†	Charger 2	Maxima PLUSH 3wt	-	Bleed	Maxima PLUSH Dynamic Suspension Lube Light	10	DebonAir	Maxima PLUSH Dynamic Suspension Lube Heavy	3	1	SRAM Butter Grease Grease Air Piston	Maxima PLUSH Dynamic Suspension Lube Light	10
	Revelation	RC RC R†	Charger RC												
			Motion Control	RockShox 5wt	100-106	155									
2020-2022	Pike Ultimate	RC2 RCT3	Charger 2.1	Maxima PLUSH 3wt	-	Bleed									
	Pike Select+	RC					Charger RC								
	Pike Select		Motion Control	RockShox 5wt	100-106	155									

*Oil Height - Measure from the top of the crown (above the upper tube) down to the oil.

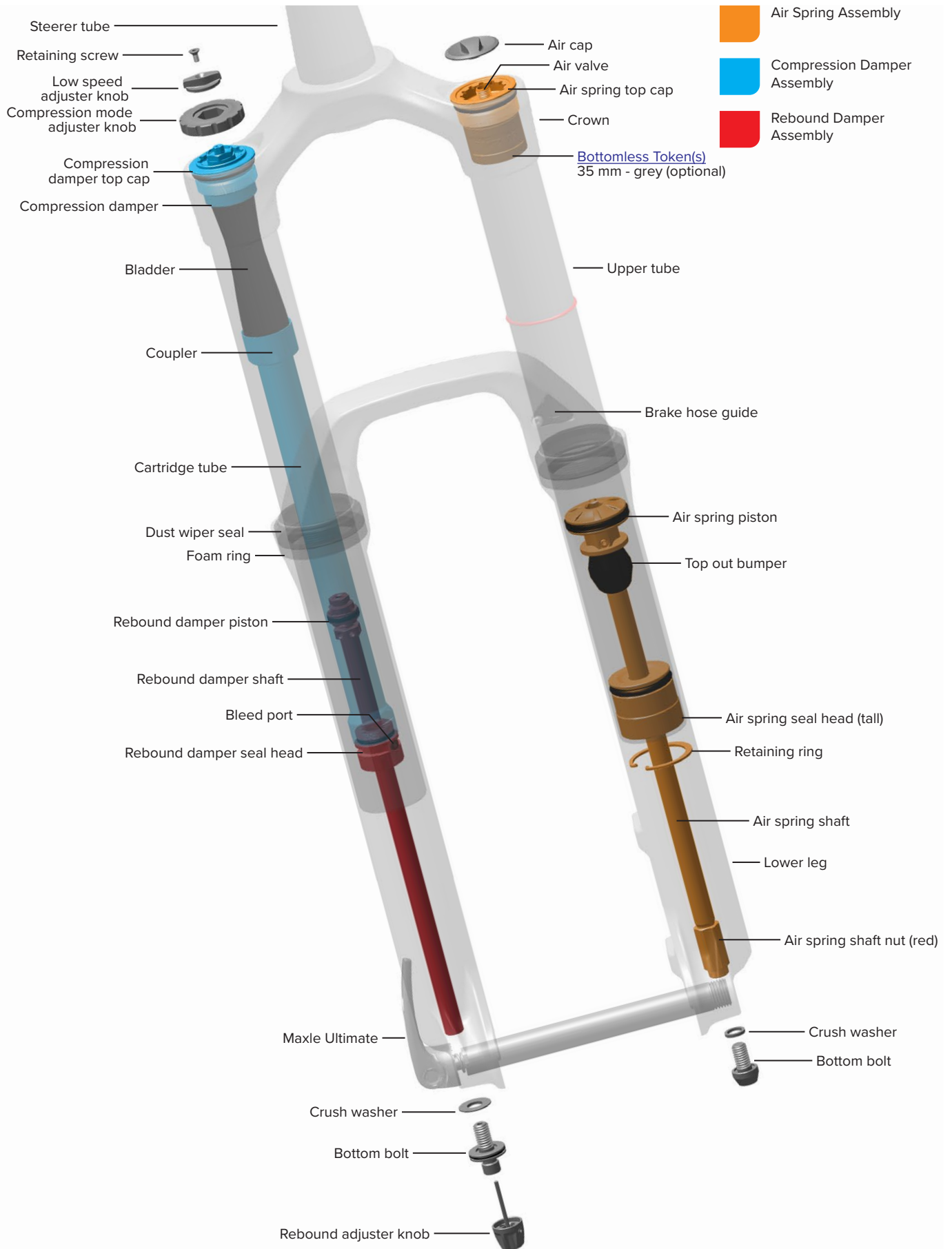
†Remote Adjust

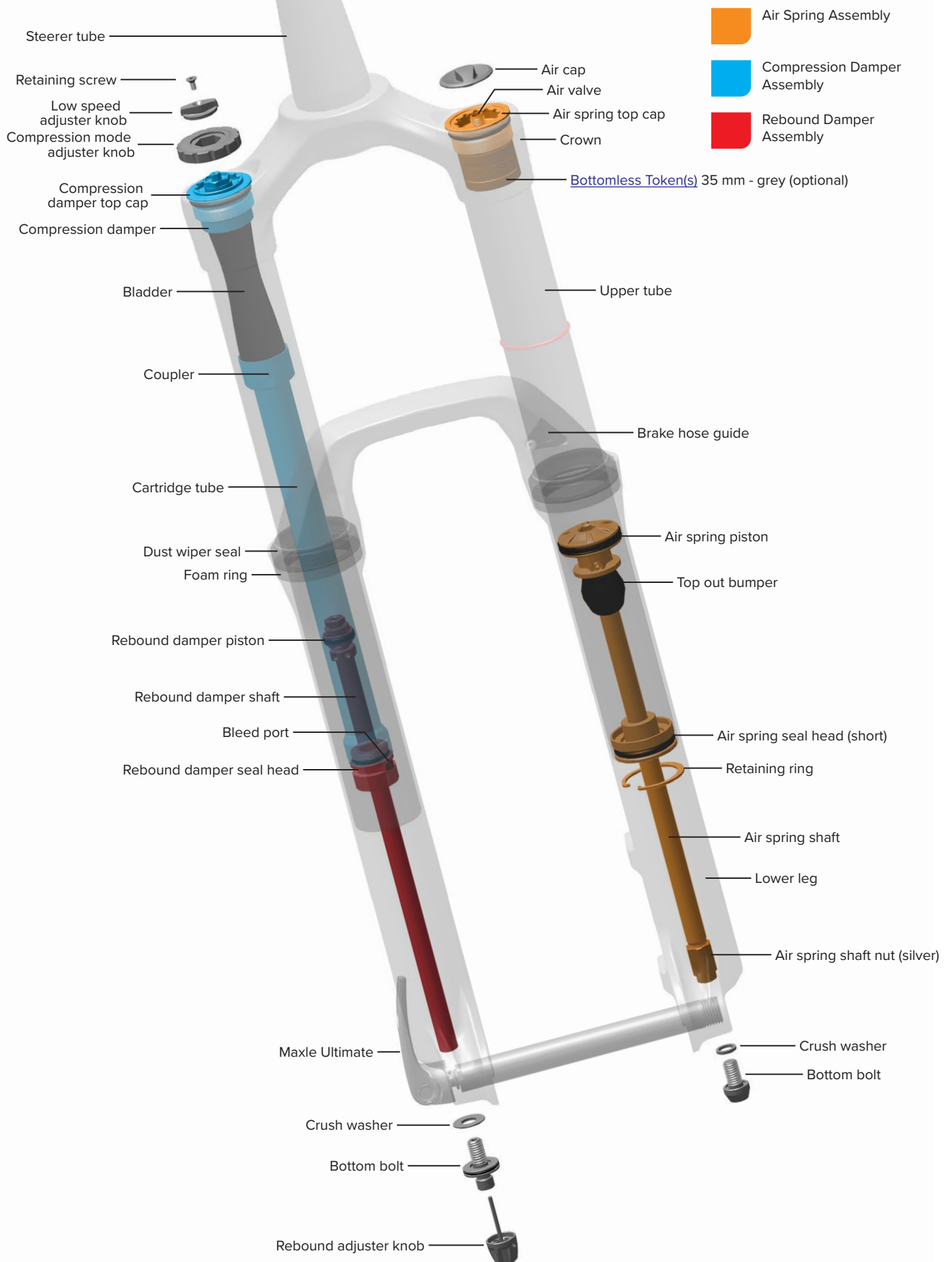
**Suspension oil/fluid - Maxima PLUSH Dynamic Suspension Lube and RockShox 0w-30 suspension oils/fluids are forward and backward compatible with RockShox Dynamic Seal Grease and SRAM Butter Grease.

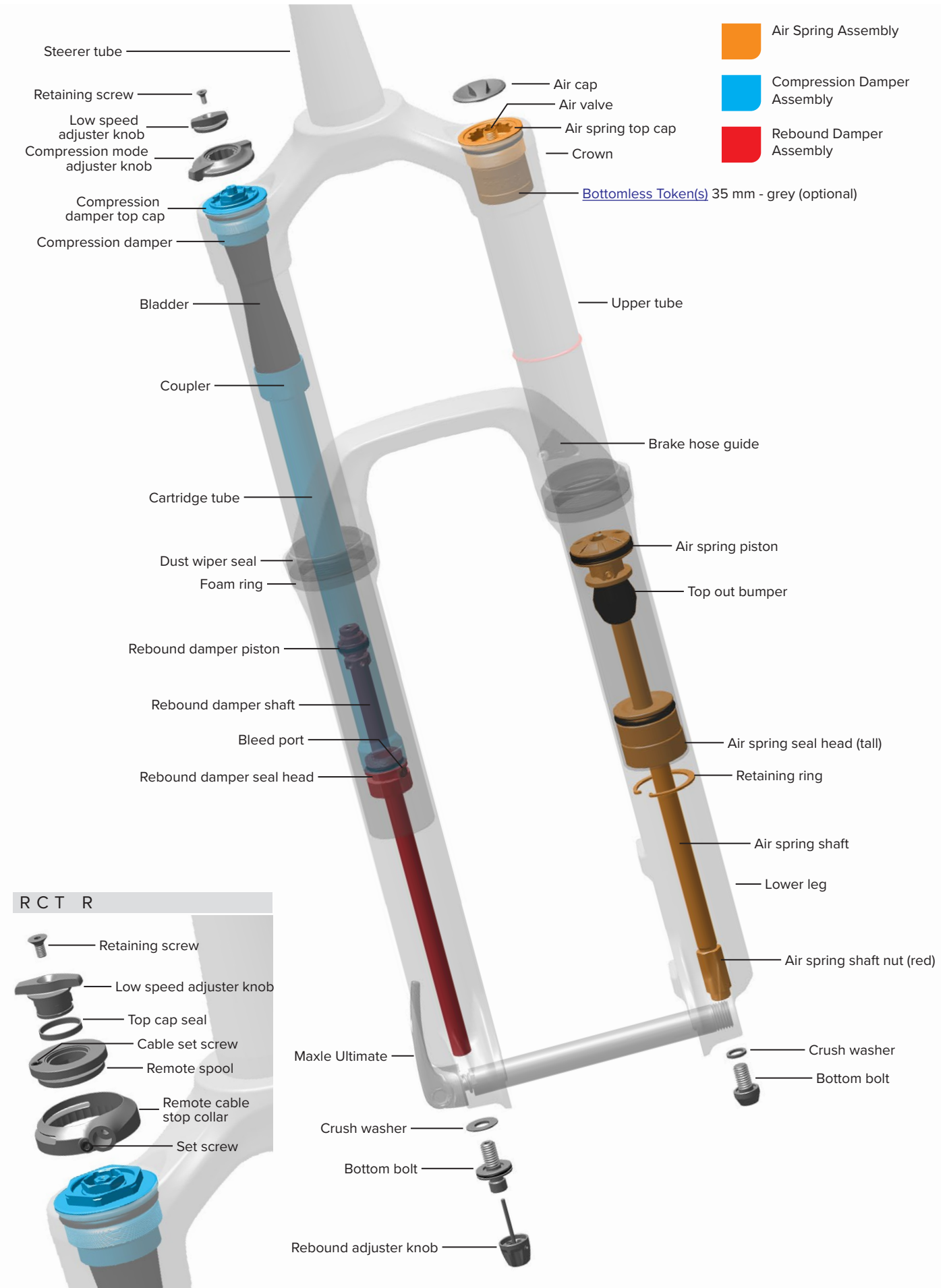
Use ONLY RockShox, SRAM, and Maxima suspension oils/fluids and grease, unless otherwise specified. Use of any other lubricants can damage seals and decrease performance.

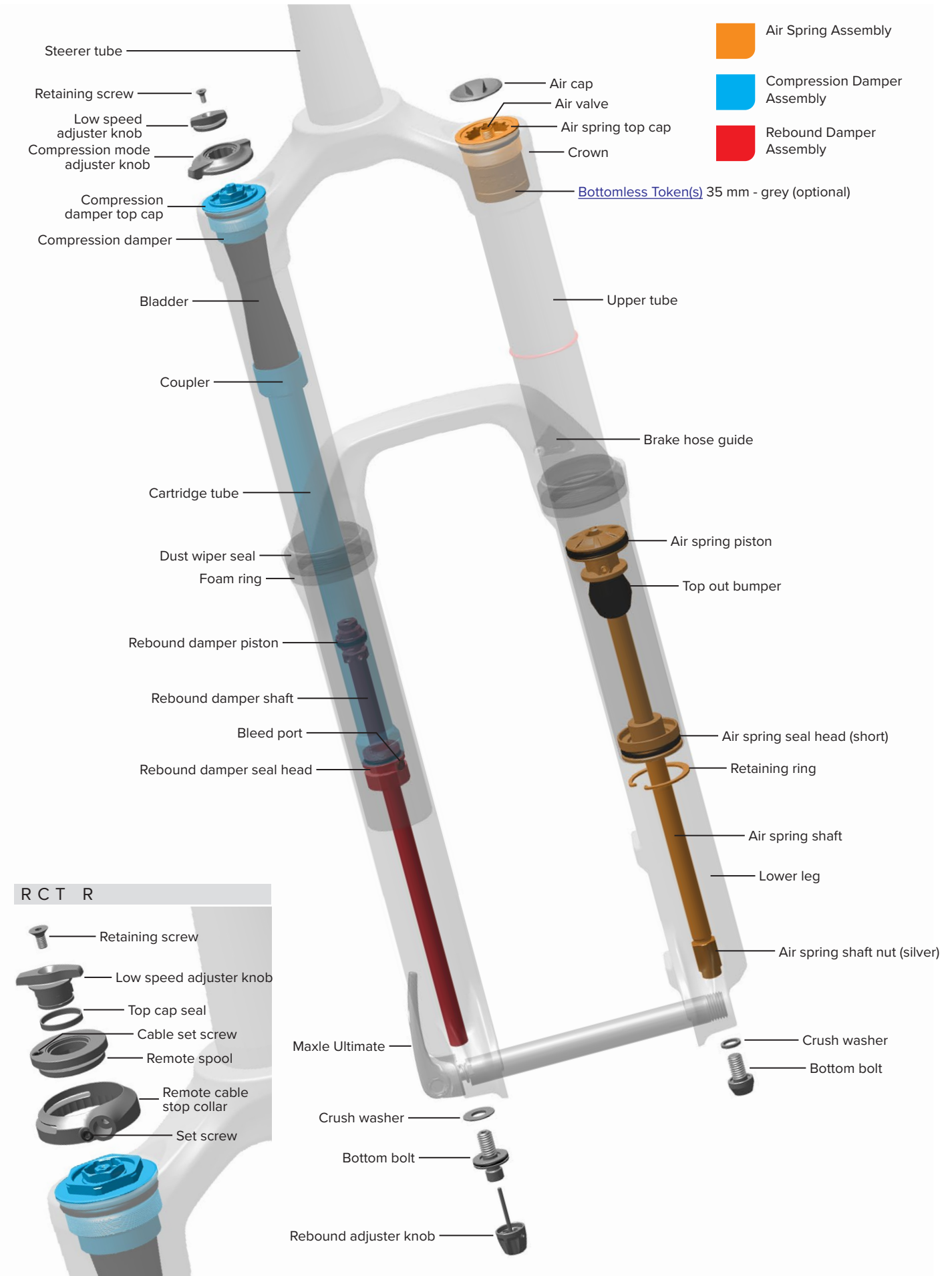
Pike DJ and non-Boost 2017 and 2018 Pike models feature Solo Air and Charger Damper. Consult the *2014-2017 Pike Service Manual* at www.sram.com/service for Solo Air and Charger Damper technical specifications and service procedures.

2018 and 2019 29+ Pike models feature the 2018 version of the DebonAir spring and the Charger 2 Damper. Refer to the *2018 Pike and Revelation Service Manual* for air spring service.









Steerer tube

Retaining screw

Compression adjuster knob

Compression damper top cap

Compression damper

Bladder

Coupler

Cartridge tube

Dust wiper seal

Foam ring

Rebound damper piston

Rebound damper shaft

Bleed port

Rebound damper seal head

Air cap

Air valve

Air spring top cap

Crown

Bottomless Token(s) 35 mm - grey (optional)

Upper tube

Brake hose guide

Air spring piston

Top out bumper

Air spring seal head (tall)

Retaining ring

Air spring shaft

Lower leg

Air spring shaft nut (red)

Crush washer

Bottom bolt

Maxle Stealth

Crush washer

Bottom bolt

Rebound adjuster knob



R C R

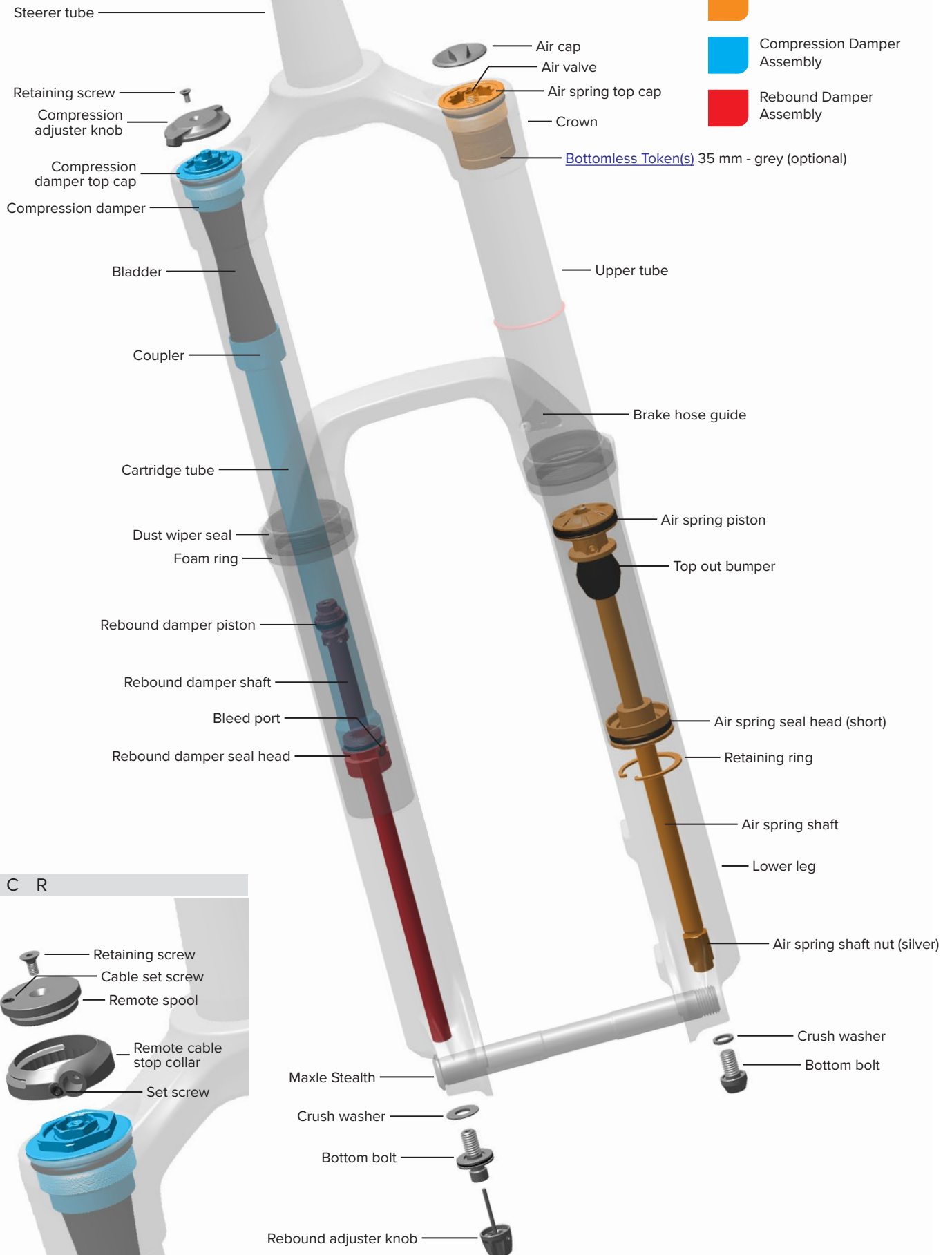
Retaining screw

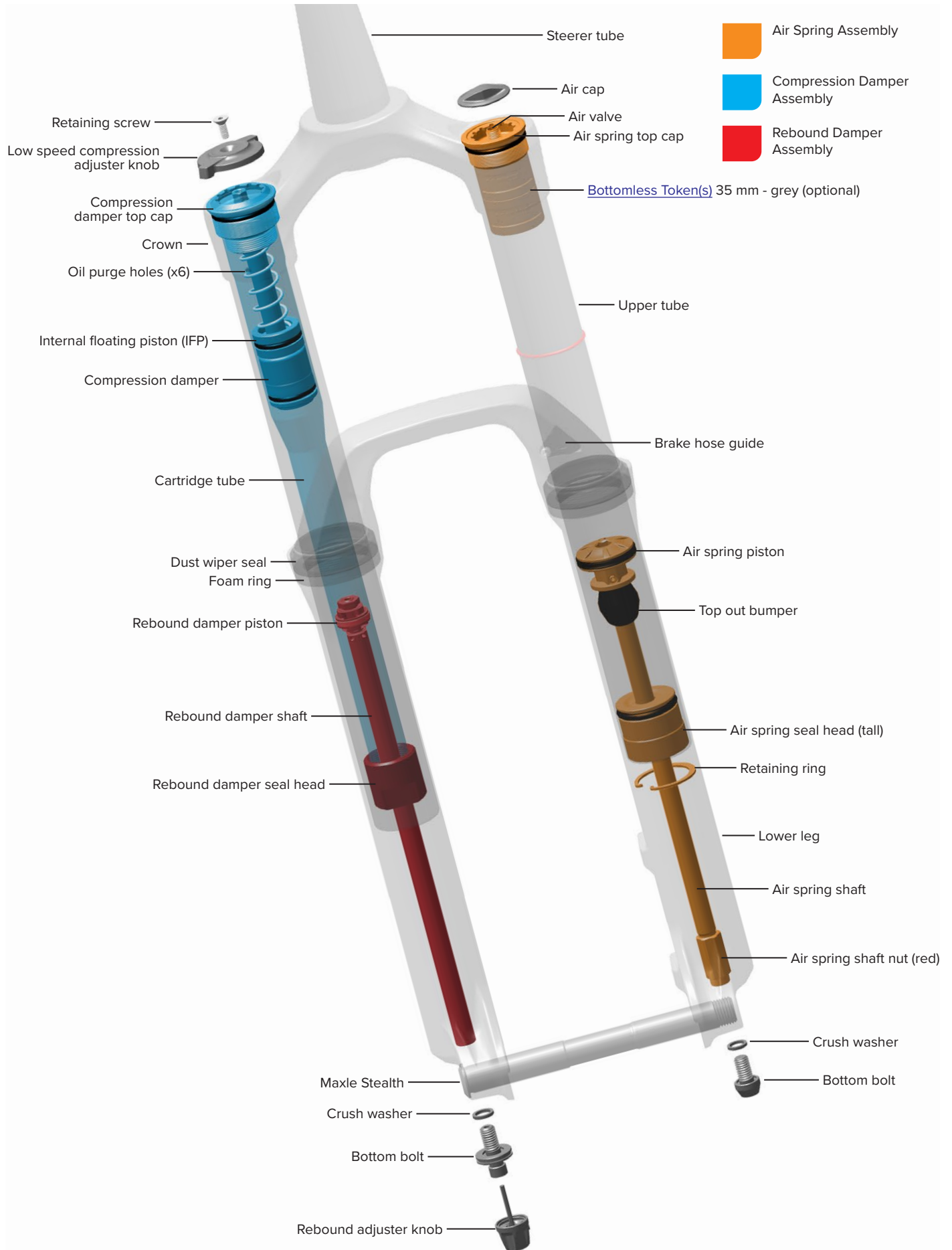
Cable set screw

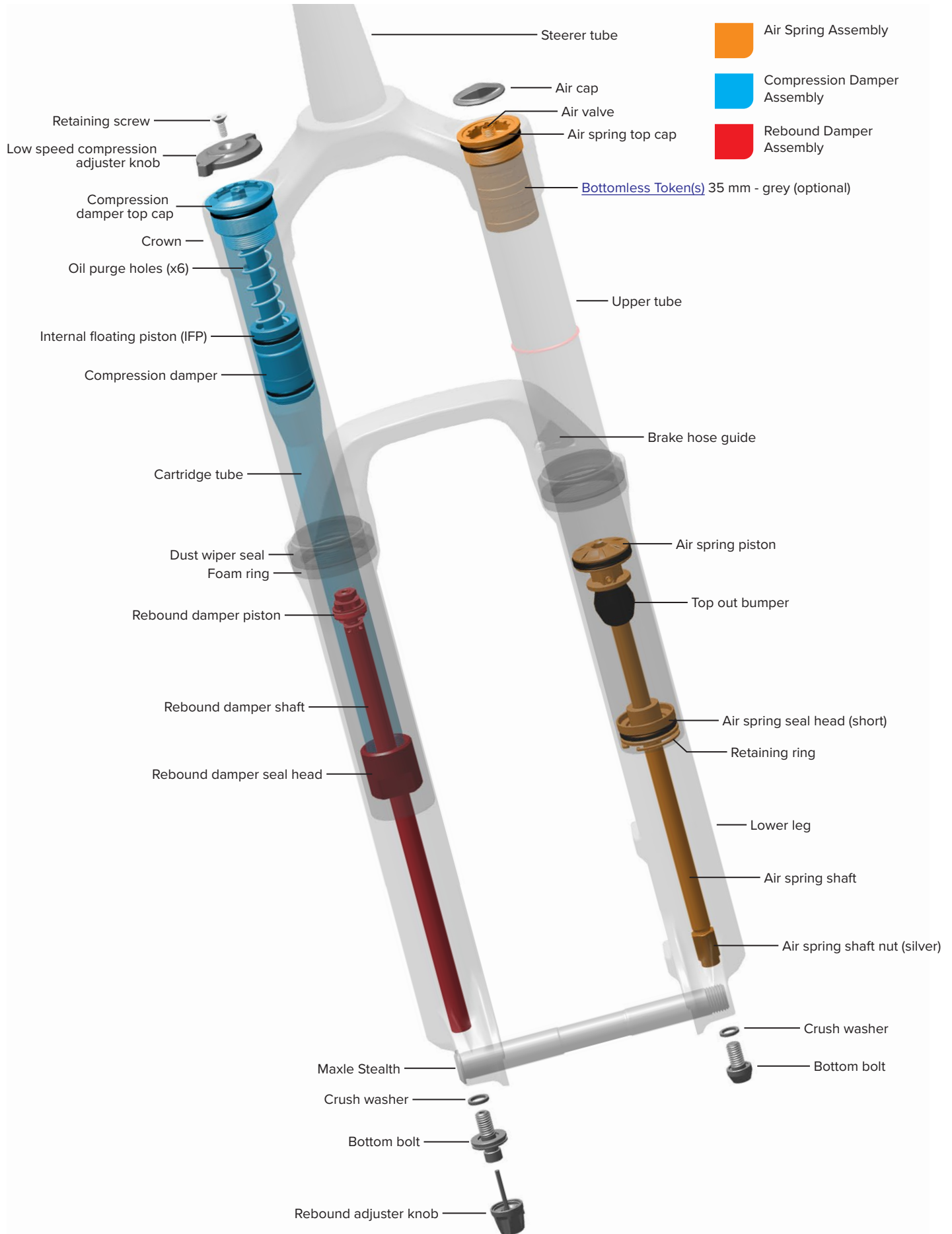
Remote spool

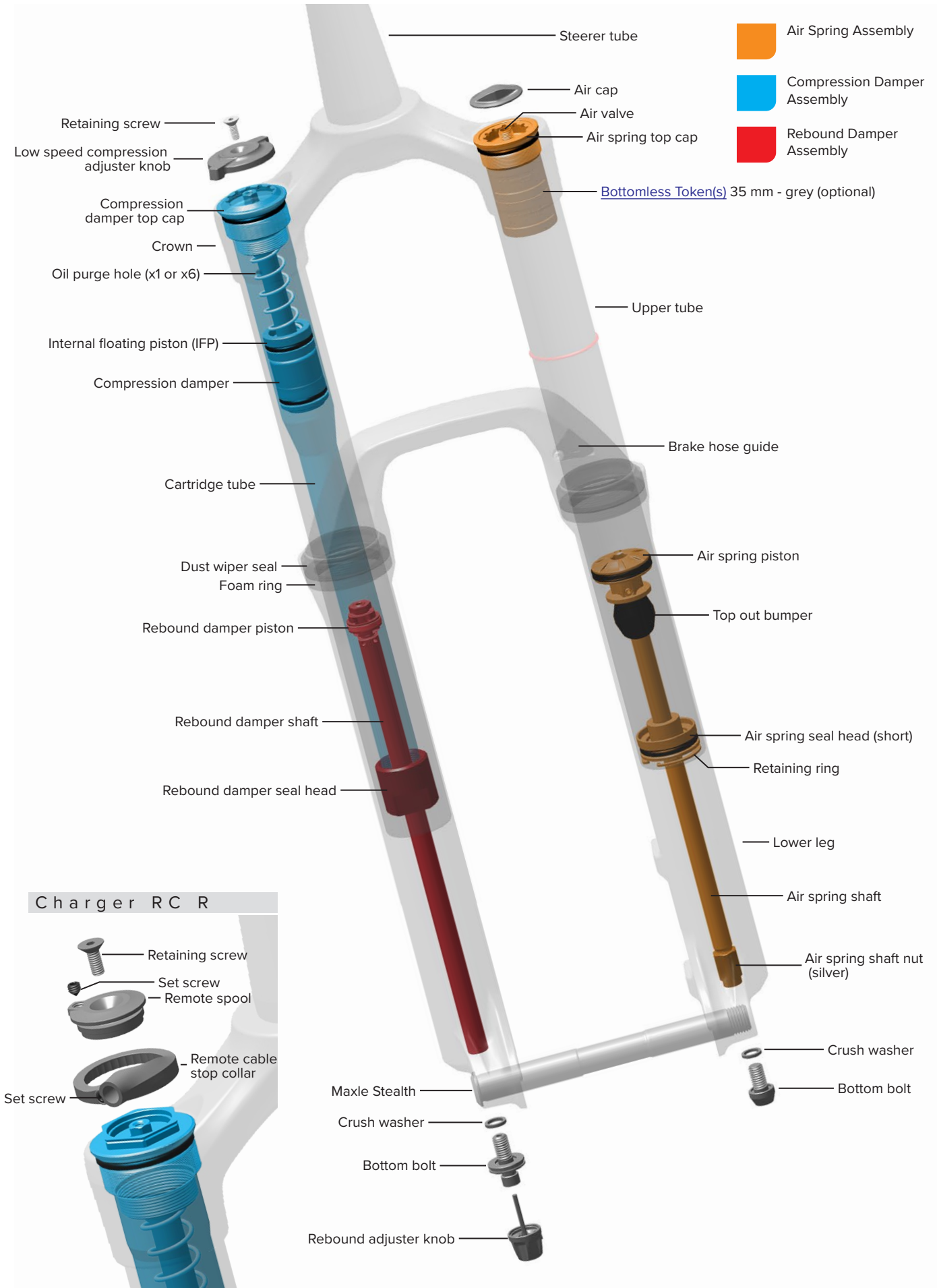
Remote cable stop collar

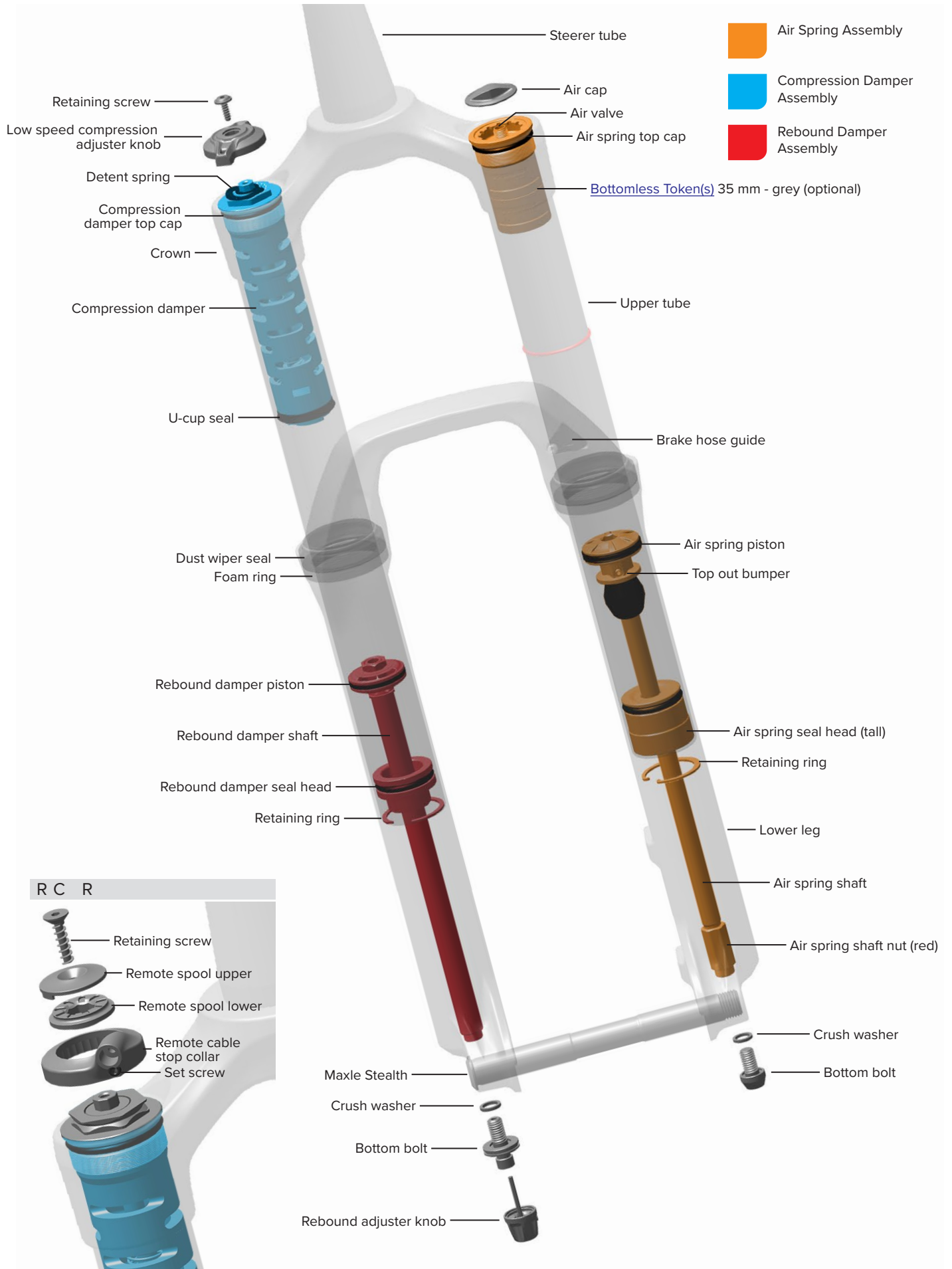
Set screw

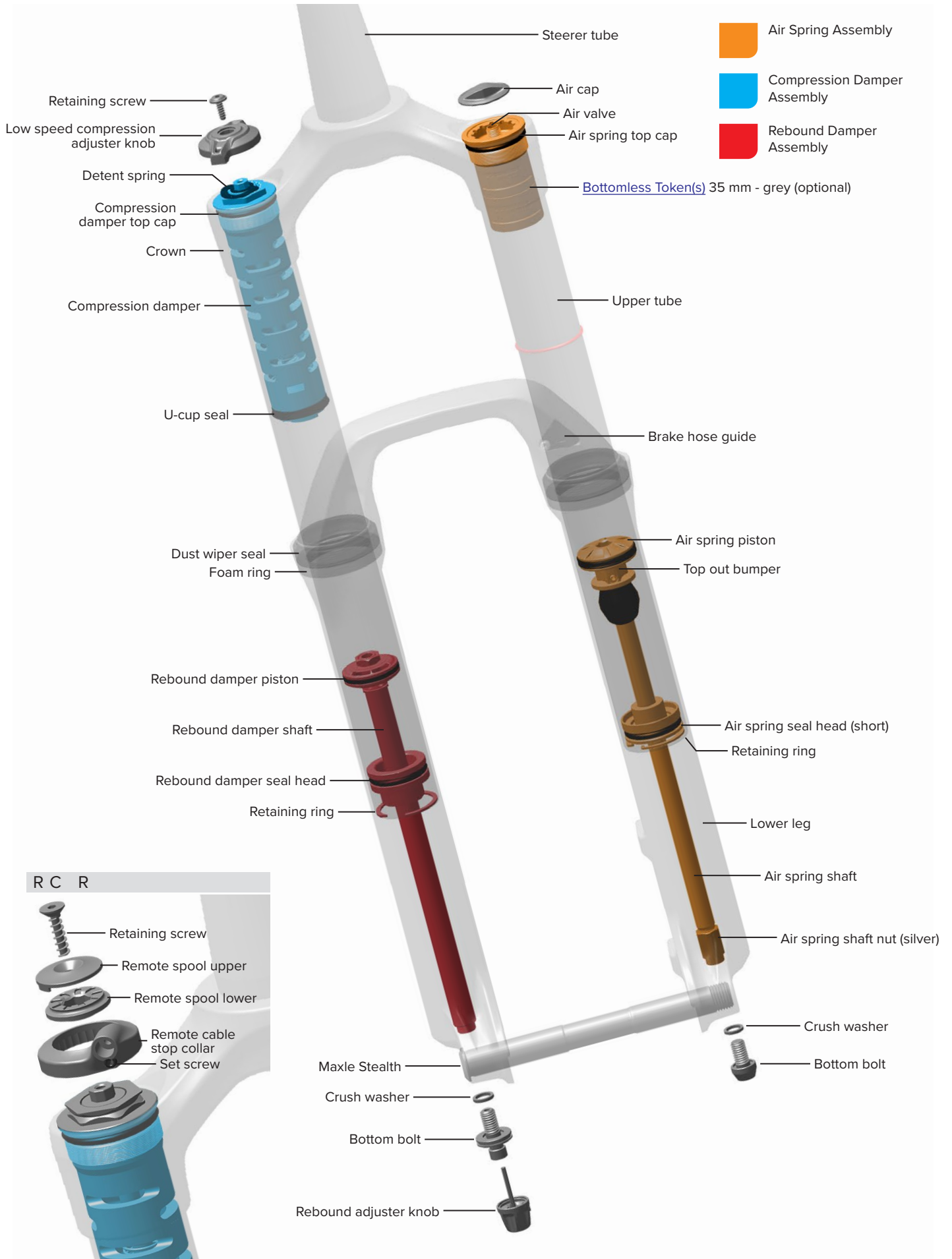












Lower Leg Removal and Service

50/200 Hour Service Lower Leg Removal

- 1 Turn the rebound adjuster knob counter-clockwise until it stops. This is the full open/fast rebound setting.

Loosen the rebound adjuster knob screw and remove the rebound adjuster knob.



- 2 **All fork models:** Clamp the fork in a bicycle work stand vertically with the steerer tube oriented upward.

⚠ WARNING - PRESSURIZED DEVICE

To avoid possible **SERIOUS INJURY OR DEATH**, position the fork vertically with the steerer tube upward so the top cap is directed upward and away from you and others.



- 3 Remove the air valve cap.



4

⚠ WARNING - PRESSURIZED DEVICE

Always wear certified safety glasses (ANSI Z87.1, EN166 EU).

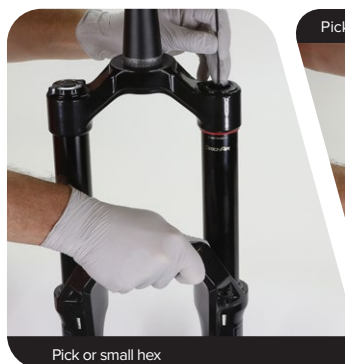
Verify all air pressure is removed from the suspension component. Failure to do so can result in **SERIOUS INJURY OR DEATH**. Refer to the Suspension Safety Precautions and Warnings section for detailed Pressurized Device warnings and instructions.

Perform the following air transfer and purge process to depressurize the positive and negative air spring chambers.

While holding the lower leg arch and pushing the lower leg down, depress the Schrader valve and slowly release air pressure. While depressing the Schrader valve, slowly allow the lower leg to compress while applying opposing pressure until you feel a sudden decrease in compressing resistance, then hold the lower leg in place to allow both air chambers to depressurize. As air transfers from the negative to the positive air chamber, air transfer should be heard.

While depressing the Schrader valve, push the lower leg down to extend the fork until there is no resistance and the fork can be fully extended. The negative air spring chamber is fully depressurized when the fork can fully be extended and no resistance is felt.

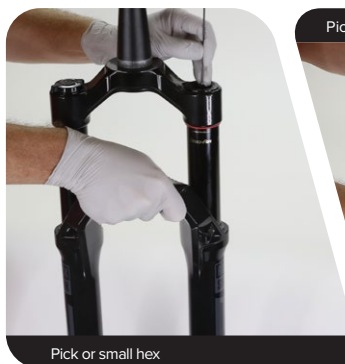
Repeat the process two to three times.



Pick or small hex wrench



Pick or small hex



Pick or small hex



Pick or small hex wrench

5

Remove the Schrader valve core from the top cap and set it aside.

⚠ WARNING - PRESSURIZED DEVICE

Always wear certified safety glasses (ANSI Z87.1, EN166 EU).

Verify all air pressure is removed from the suspension component. Failure to do so can result in **SERIOUS INJURY OR DEATH**. Refer to the Suspension Safety Precautions and Warnings section for detailed Pressurized Device warnings and instructions.



RockShox Schrader Valve Tool

6

Compress and extend the fork to confirm the negative air chamber has been depressurized.



- 7** Place an oil pan beneath the fork to catch the draining oil.
Loosen both bottom bolts 3 to 4 turns.



- 8** Strike each bottom bolt to dislodge the shafts from the lower leg on each side. The bolt head should contact the bottom of the lower leg.
29" Lower Legs: Insert a 5 mm hex wrench into the bolt head and strike the wrench.
Remove each bottom bolt. Clean each bolt and set them aside.



- 9** Firmly pull the lower leg downward until fluid begins to drain. Continue pulling downward to remove the lower leg.
If the lower leg does not slide off of the upper tube or if oil does not drain from either side, the press fit of the shaft(s) into the lower leg may still be engaged. Reinstall the bottom bolts 2 to 3 turns and repeat the previous step.

NOTICE

Do not strike the fork arch with any tool when removing the lower leg as this could damage the lower leg.



50 Hour Service Continue the 50 Hour Service with [Lower Leg Service](#).
200 Hour Service Continue the 200 Hour Service with [Lower Leg Seal Service](#).

- 1 Remove the foam rings.



- 2 Clean the foam rings.
Replace the foam rings if worn, damaged, or excessively contaminated.



- 3 Soak the foam rings in suspension oil.



- 4** Clean the inside and outside of the lower leg.
Clean the wiper seals.

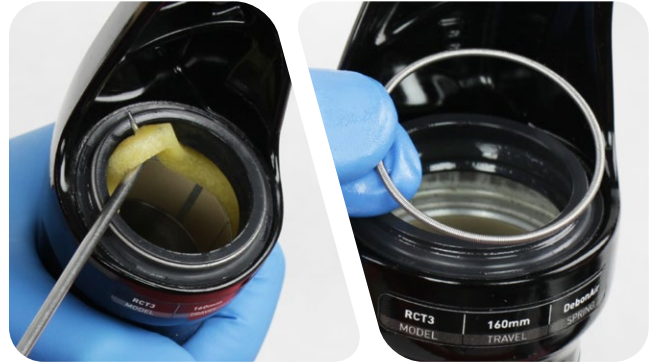


- 5** Install the foam rings under the wiper seals.
Confirm the foam rings are installed evenly in the space under the wiper seals and do not protrude over the bushings.



50 Hour Service Continue the 50 Hour Service with [Lower Leg Installation](#).

- 1 Remove and discard the foam rings.
Remove the outer wire springs from the dust wiper seals.



- 2 Stabilize the lower leg on a bench top. Place the tip of a downhill tire lever under the wiper seal. Press down on the downhill tire lever handle to remove the seal.

Repeat on the other side. Discard the wiper seals.

NOTICE

Keep the lower leg stable. Do not allow the lower leg to twist in opposite directions, compress toward each other, or be pulled apart. This will damage the lower leg.



- 3 Clean the inside and outside of the lower leg.



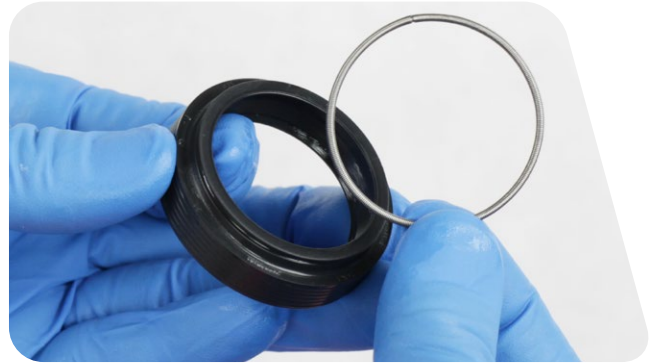
- 4 Soak the new foam rings in suspension oil.
Install the new foam rings into the lower leg.

⚠ CAUTION

Always wear safety glasses. Do not allow oil, fluid, grease, lubricant, or cleaner to contact your eyes or face. Seek immediate medical attention if irritation occurs.



- 5 Remove the outer wire spring from each new dust wiper seal and set them aside.



- 6 Insert the narrow end of a new wiper seal into the recessed end of the 35 mm Dust Seal Installation tool.

NOTICE

If the RockShox x Abbey Bike Tools installation tool is used, confirm the 35 mm installation puck is tightened hand tight on the installation tool handle to avoid damage to the installation puck during use.



- 7** Stabilize the lower leg on a bench top. Hold the lower leg steady and press the wiper seal into the lower leg until the top of the seal is flush with the top of the lower leg.

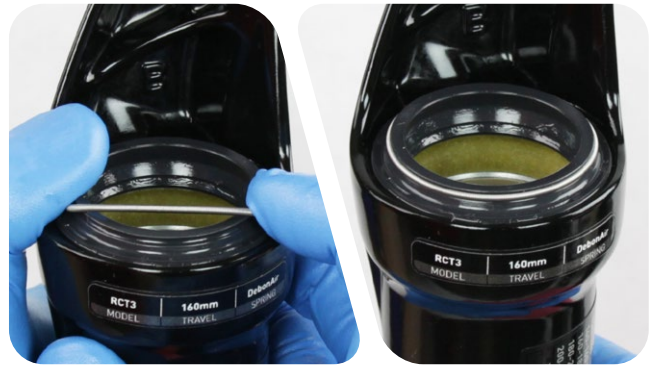
Repeat on the other side.

NOTICE

Only press the wiper seal into the lower leg until it is flush with the top surface of the lower leg. Pressing the wiper seal below the top surface of the lower leg will compress the foam ring.



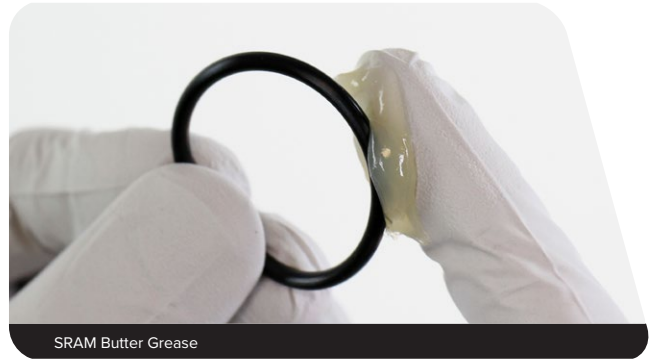
- 8** Install the outer wire springs.



NOTICE

Inspect each part for scratches. Do not scratch any sealing surfaces when servicing your suspension. Scratches can cause leaks.

When replacing seals and o-rings, use your fingers or a pick to remove the seal or o-ring. Spray RockShox Suspension Cleaner or isopropyl alcohol onto each part and clean with a clean lint-free shop towel.



SRAM Butter Grease

- 1 Clamp the fork in a bicycle work stand vertically with the steerer tube oriented upward.

⚠ WARNING - PRESSURIZED DEVICE

To avoid possible **SERIOUS INJURY OR DEATH**, position the fork vertically with the steerer tube upward so the top cap is directed upward and away from you and others.



Bicycle work stand

- 2 Confirm the Schrader valve core is **NOT INSTALLED** in the air spring top cap before proceeding. Remove the Schrader valve core if installed.

⚠ WARNING - PRESSURIZED DEVICE

Always wear certified safety glasses (ANSI Z87.1, EN166 EU).

Verify all air pressure is removed from the suspension component. Failure to do so can result in **SERIOUS INJURY OR DEATH**. Refer to the Suspension Safety Precautions and Warnings section for detailed Pressurized Device warnings and instructions.



RockShox Schrader Valve Tool

- 3 The positive and negative air spring chambers **must be FULLY depressurized** before removing the air spring top cap assembly.

Slowly compress and extend (push up/pull down) the air spring shaft to allow any remaining negative air pressure to bypass the air transfer dimple on the inside surface of the upper tube.

The negative air spring chamber is fully depressurized when the shaft can be pulled to full extension. When released, the air spring shaft will retract into the upper tube slightly due to pressure created when the air piston is extended past the air bypass dimple in the upper tube. This is normal.

Repeat the process two to three times.



1

⚠WARNING- EYE HAZARD

Verify all pressure is removed from the fork before proceeding. Depress the Schrader valve again to remove any remaining air pressure. Failure to do so can result in injury and/or damage to the fork.

Remove the air spring top cap.

Clean the upper tube threads.



Top cap / Cassette tool



2

Remove the top cap o-ring and discard it. Apply grease to a new o-ring and install it.



3

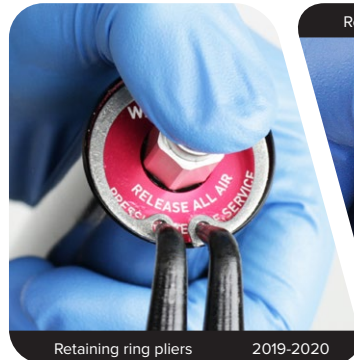
Push the air shaft into the upper tube with your thumb. While holding the shaft in, remove the retaining ring. Slide the retaining ring onto your thumb and carefully release the air spring shaft.

*2021-2023 Revelation, 2021-2022 Pike

Trapped negative air pressure creates increased resistance when pushing the shaft in. Wear a thicker glove to protect your thumb if needed.

NOTICE

Do not scratch the air spring shaft. Scratches on the air shaft will allow air to bypass the seal head into the lower leg, resulting in reduced spring performance.



Retaining ring pliers

2019-2020



Retaining ring pliers

2021-2023*

4

Wrap a shop towel around the end of the air shaft for extra grip. Push the shaft half way into the upper tube, then quickly and firmly pull the shaft out to dislodge the seal head. Remove the air spring assembly from the upper tube.

A build up of negative air pressure may prevent the air spring from being pulled out of the upper tube. If the air spring is difficult to remove, use a clean plastic dowel to push the air spring piston down while pulling the air shaft out.

NOTICE

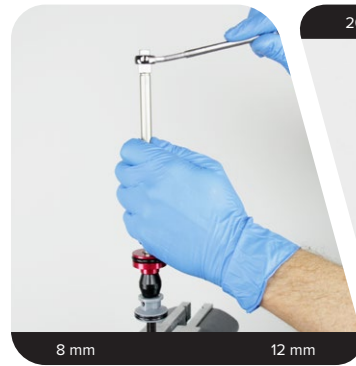
Do not scratch the inside of the upper tube. Scratches will allow air to bypass the seals resulting in reduced spring performance.



- 5** Clamp an 8 mm hex wrench into a vise. Position the air piston onto the hex wrench. While holding the air shaft, unthread and remove the air shaft nut from the air spring shaft.

*2021-2023 Revelation, 2021-2022 Pike

Remove the air assembly from the vise.



- 6** Remove the seal head and top out bumper from the air spring shaft. Discard the seal head.

*2021-2023 Revelation, 2021-2022 Pike

Clean and inspect the shaft for damage.

Clean the top out bumper.

NOTICE

Scratches on the air spring shaft can cause air to leak. If a scratch is visible the air spring assembly may need to be replaced.



- 7** Remove the quad ring seal from the air piston and discard it.
Clean the air piston.
Apply grease to a new quad ring seal and install it.

NOTICE

Do not scratch the air piston. Scratches will cause air to leak.



- 8** Clean the inside and outside of the upper tube.
Inspect the inside and outside of the upper tube for damage.

NOTICE

Scratches on the inside surface of the upper tube can cause air to leak. If an internal scratch is visible, the crown steerer upper tube assembly may need to be replaced.



Air Spring Travel Change and Bottomless Tokens (optional)

To increase or decrease the travel in your RockShox Pike or Revelation fork, the air spring must be replaced with the appropriate length air spring shaft assembly. For example, to change a Pike with a maximum of 140 mm of travel to a maximum of 160 mm of travel, a 160 mm air spring shaft assembly must be installed.

Bottomless Tokens can be added to, or removed from, the DebonAir (DA) top cap to fine-tune the bottom-out feel and spring curve. Use the chart below to help determine the number of Bottomless Tokens that can be used with each maximum fork travel option. If fork travel is changed from stock, it may be necessary to add or remove Bottomless Tokens.

Refer to the RockShox Spare Parts Catalog at www.sram.com/service for available air spring and Bottomless Token kits.

For part ordering information, please contact your local SRAM distributor or dealer.

DebonAir - Travel and Bottomless Token Tuning - Pike

Fork Travel	27.5" Boost		29" Boost		29+	
	Bottomless Tokens Factory Installed	Bottomless Tokens Maximum	Bottomless Tokens Factory Installed	Bottomless Tokens Maximum	Bottomless Tokens Factory Installed	Bottomless Tokens Maximum
160	0	4	-	-	-	-
150	0	4	1	4	-	-
140	1	5	1	5	-	-
130	2	6	2	6	3	6
120	3	6	3	6	3	6

Fork Travel	27.5" Boost		29" Boost	
	Bottomless Tokens Factory Installed	Bottomless Tokens Maximum	Bottomless Tokens Factory Installed	Bottomless Tokens Maximum
160	0	4	-	-
150	1	4	1	4
140	2	5	2	5
130	3	6	3	6
120	4	6	4	6

Bottomless Tokens Installation (optional)

Bottomless Tokens reduce air volume in your fork and create greater ramp at the end of the fork travel. Add tokens to tune your fork's bottomless feel. See [Air Spring Travel Change and Bottomless Tokens](#) for the maximum number of Tokens for your fork.

Thread a Bottomless Token into another Bottomless Token, or into the the bottom of the top cap, and tighten.

⚠ WARNING - CRASH HAZARD

Parts must be tightened to the specified torque. Failure to do so can result in SERIOUS INJURY OR DEATH.



8 mm 4 N•m (35 in-lb) 24 mm or Top cap / Cassette tool

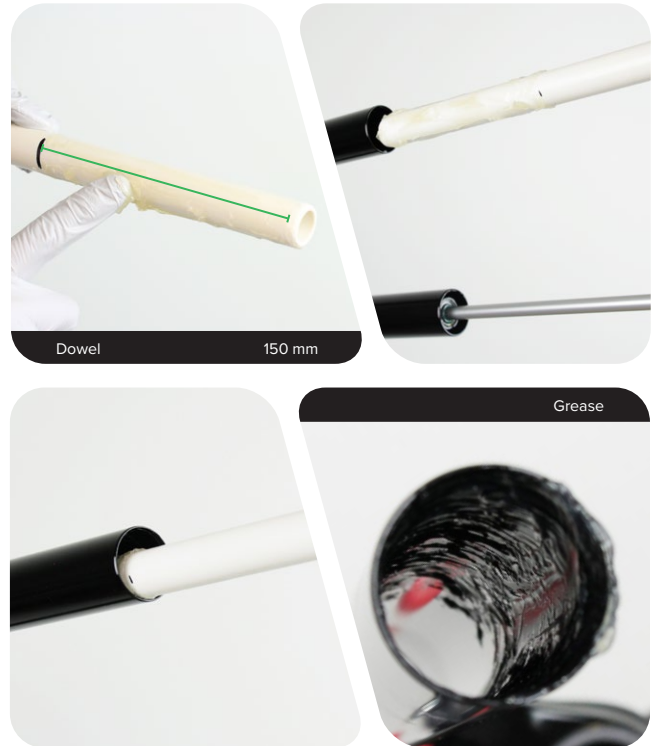


8 mm 4 N•m (35 in-lb) 24 mm or Top cap / Cassette tool

It is optional to change maximum fork travel by replacing the stock air spring shaft assembly with a shorter or longer air spring shaft assembly. If maximum travel is increased or reduced, use the new complete air spring shaft assembly in the following installation steps. It may also be necessary to add or remove Bottomless Tokens. Refer to [Air Spring Travel Change and Bottomless Tokens](#) for details.

Refer to the RockShox Spare Parts Catalog available at www.sram.com/service for the required spare part kits. For part ordering information, please contact your local SRAM distributor or dealer.

- 1 Apply a liberal amount of grease evenly around the end of a clean plastic dowel, approximately 150 mm from one end. Use the dowel to apply the grease to the inside surface of the upper tube, approximately 150 mm into the tube.



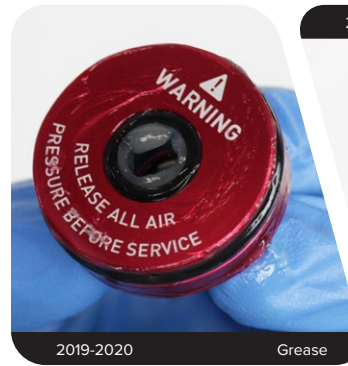
- 2 Install the top out bumper onto the shaft.



- 3 Apply a liberal amount of grease to the air spring shaft.



- 4** Apply grease to the new seal head inner seal.
*2021-2023 Revelation, 2021-2022 Pike



- 5** Install the new seal head assembly onto the air shaft.
*2021-2023 Revelation, 2021-2022 Pike



- 6** Apply red Loctite 2760 to the first two to three full threads on the end of the air shaft.

Clamp an 8 mm hex wrench into a vise. Insert the air piston onto the wrench to secure it. Install the air shaft nut onto the air shaft and tighten it.

*2021-2023 Revelation, 2021-2022 Pike

NOTICE

To ensure compatibility and correct performance, **ONLY** use the shaft nut that is compatible with the seal head.

The silver shaft nut (A) is compatible only with the short seal head (B).

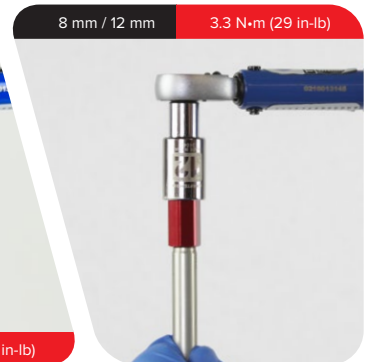
The red shaft nut (C) is compatible only with the tall seal head (D).

⚠ WARNING - CRASH HAZARD

Parts must be tightened to the specified torque. Failure to do so can result in **SERIOUS INJURY OR DEATH**.

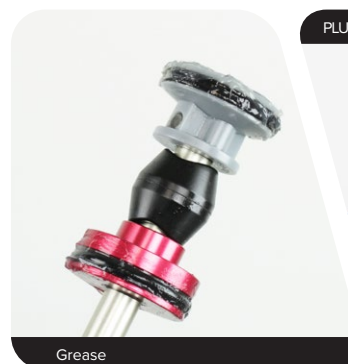
⚠ WARNING - CRASH HAZARD

To avoid separation of parts, threadlocker must be applied as instructed. Failure to apply threadlocker could result in separation of the parts, and possible **SERIOUS INJURY OR DEATH**.



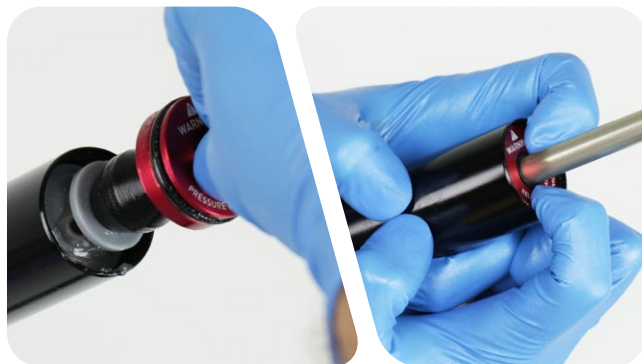
- 7** Apply grease to the air piston and seal head outer o-rings/seals.

Inject 1 mL of Maxima PLUSH Dynamic Suspension Lube Heavy into the upper tube, on top of the air piston and into the negative air chamber.



- 8** Insert the air spring assembly into the upper tube. Firmly push the air piston into the upper tube.

Insert the seal head into the upper tube and firmly press it into the upper tube until it stops.



- 9** Retaining rings have a sharper-edged side and a rounder edged side. Installing retaining rings with the sharper-edged side facing the tool will allow for easier installation and removal.

Place the tips of the retaining ring pliers into the eyelets of the retaining ring. Guide the retaining ring with your finger to prevent the shaft from getting scratched while installing the retaining ring.

Use the pliers to push the seal head into the upper tube while installing the retaining ring into the groove. Release the retaining ring pliers when the ring is fully seated in the groove.

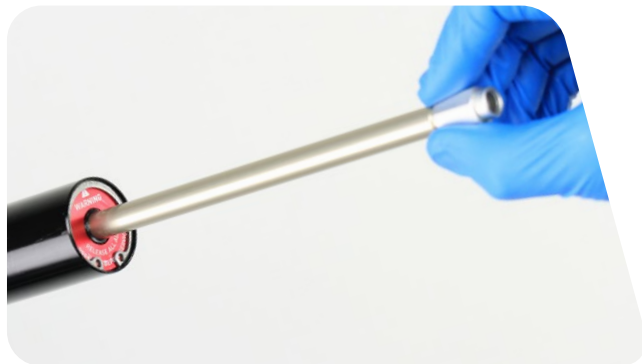
Confirm the retaining ring is properly seated in the retaining ring groove by using the retaining ring pliers to rotate the retaining ring and seal head back and forth a few times, then firmly pull down on the air shaft.



NOTICE

Do not scratch the air spring shaft. Scratches on the air shaft will allow air to bypass the seal head into the lower leg, resulting in reduced spring performance.

- 10** Pull the shaft out until it stops.



- 11** Inject or pour Maxima PLUSH Dynamic Suspension Lube Heavy into the air spring upper tube.

CAUTION

Always wear safety glasses. Do not allow oil, fluid, grease, lubricant, or cleaner to contact your eyes or face. Seek immediate medical attention if irritation occurs.



Maxima PLUSH Dynamic Suspension Lube Heavy

3 mL

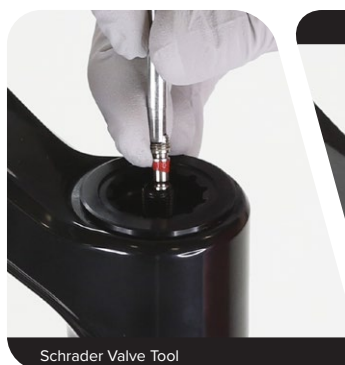
- 12** Install the air spring top cap into the upper tube and tighten it. Press down firmly when tightening the top cap.

⚠ WARNING - CRASH HAZARD

Parts must be tightened to the specified torque. Failure to do so can result in SERIOUS INJURY OR DEATH.



- 13** Install the Schrader valve core into the top cap and tighten it finger tight.



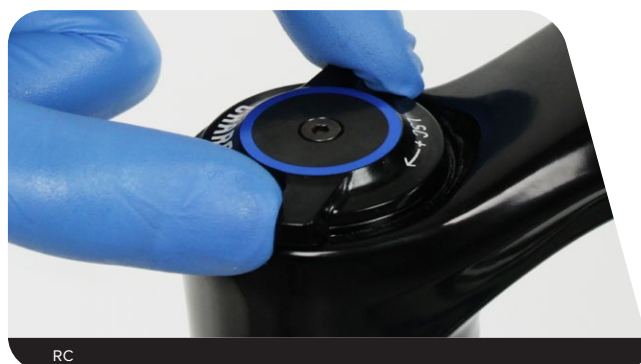
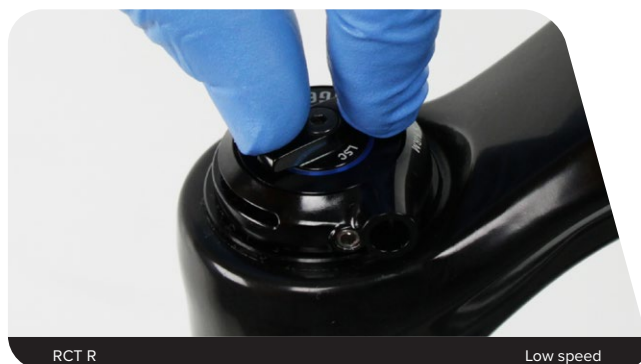
200 Hour Service To continue with Charger 2 Damper/Charger 2.1 Damper service, go to [Charger 2 Damper/Charger 2.1 Damper Service](#).

200 Hour Service To continue with Charger Damper RC service, go to [Charger Damper RC Service](#).

200 Hour Service To continue with Motion Control service, go to [Motion Control Damper Service](#).

- 1 The compression damper must be in the full open position in order to perform bleed procedure.

RC2 / RCT3 / RCT R / RC / RC R: Turn the compression adjuster knobs counter-clockwise, to the full open position, until they stop.



2 Remove the knob retaining screw.



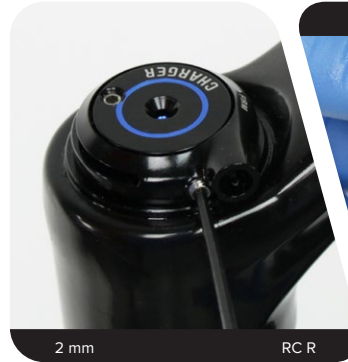
3 **RC2 / RCT3 / RC:** Remove the low speed compression adjuster knob.



RC2 / RCT3: Remove the compression mode adjuster knob.



- 4** **RCT R / RC R:** Loosen the remote cable stop collar set screw and remove the collar.



- 5** **RCT R:** Remove the low speed knob/remote spool assembly.
RC R: Remove the remote spool.



- 6** Unthread the damper top cap and remove the Charger 2 Damper/
Charger 2.1 Damper damper assembly.

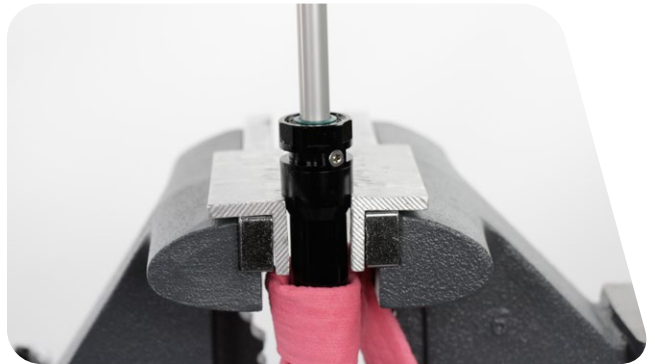
Clean the upper tube threads.



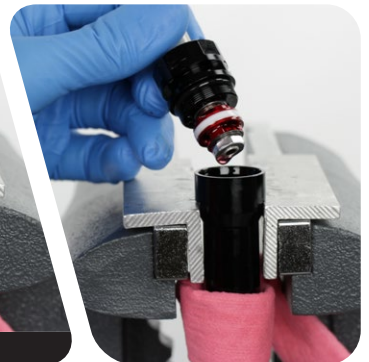
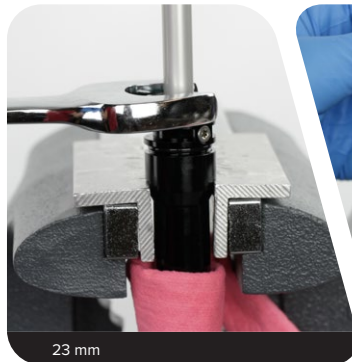
- 1 Remove the o-ring from the top cap. Clean the top cap threads and o-ring groove. Apply grease to a new o-ring and install it.



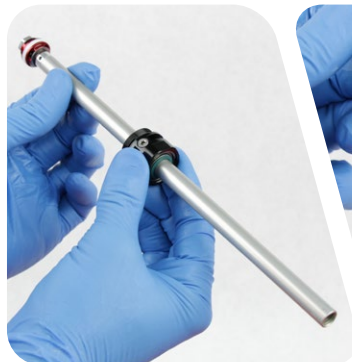
- 2 Clamp the cartridge tube wrench flats in a vise with flat soft jaw inserts, with the rebound damper oriented upwards.
Wrap a shop towel around the cartridge tube to absorb oil.




- 3 Unthread and slowly remove the rebound damper seal head assembly from the cartridge tube.



- 4 Remove the seal head from the rebound damper shaft and discard it.



 Review the following steps prior to performing any further service. The color of the solid band glide ring may vary.

- 5 Solid Band Glide Ring (Ultimate/Select+):** The solid band glide ring is not removable and only requires cleaning.

NOTICE

Do not remove the solid band glide ring. The solid band glide ring is not serviceable. Removal of the solid band glide ring will require a new damper assembly.

The color of the solid band glide ring may vary



Split Band Glide Ring: The split band glide ring is not replaced during service and only requires cleaning. Do not remove.



- 6** Apply grease to the new rebound damper seal head seals.
*2021-2023 Revelation, 2021-2022 Pike

CAUTION

Always wear safety glasses. Do not allow oil, fluid, grease, lubricant, or cleaner to contact your eyes or face. Seek immediate medical attention if irritation occurs.



- 7** Install the new seal head onto the rebound damper shaft, threaded end first, and slide it towards the piston until it stops.



- 8** Remove the bleed screw from the seal head.



- 9** Remove the cartridge tube from the vise and pour the oil into an oil pan.
- Squeeze the bladder to drain the oil from the compression damper assembly into an oil pan.

⚠ CAUTION

Always wear safety glasses. Do not allow oil, fluid, grease, lubricant, or cleaner to contact your eyes or face. Seek immediate medical attention if irritation occurs.



- 10** Clamp the cartridge tube, on the bladder coupler wrench flats, back into the vise.

Spray RockShox Suspension Cleaner or isopropyl alcohol into the cartridge tube.



Squeeze the bladder 5-6 times to circulate the cleaner into the damper.



- 11** Remove the tube from the vise. Orient the tube downward and squeeze the bladder until the cleaner and any remaining oil is drained into an oil pan.

Place the tube on a shop towel for a few minutes to allow any excess cleaner to drain.

CAUTION

Always wear safety glasses. Do not allow oil, fluid, grease, lubricant, or cleaner to contact your eyes or face. Seek immediate medical attention if irritation occurs.

CAUTION

Place an oil pan on the floor underneath the product during service to catch any drained or spilled fluids. To avoid a slip and fall, and possible injury or harm, immediately clean any oil, fluid, grease, or lubricant from the floor in your work area.



- 12** Dry the cartridge tube and compression damper assembly with compressed air.



Air compressor and Air gun nozzle

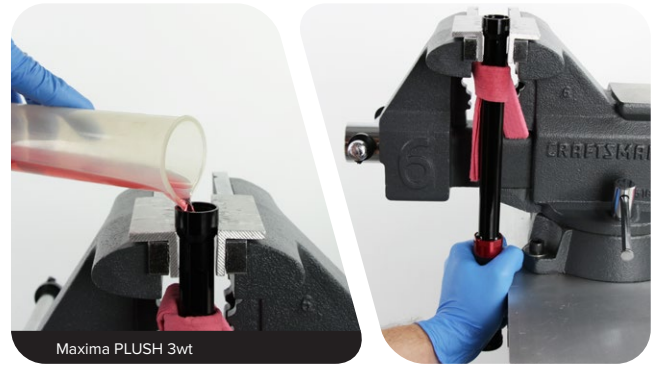
- 1 Clamp the cartridge tube wrench flats lightly into the vise and soft jaw inserts. Wrap a shop towel around the tube to absorb any oil.

Pour 3wt suspension oil into the cartridge tube until it is full.

Squeeze the bladder until trapped bubbles stop purging. Pour additional oil into the cartridge tube until full.

CAUTION

Always wear safety glasses. Do not allow oil, fluid, grease, lubricant, or cleaner to contact your eyes or face. Seek immediate medical attention if irritation occurs.



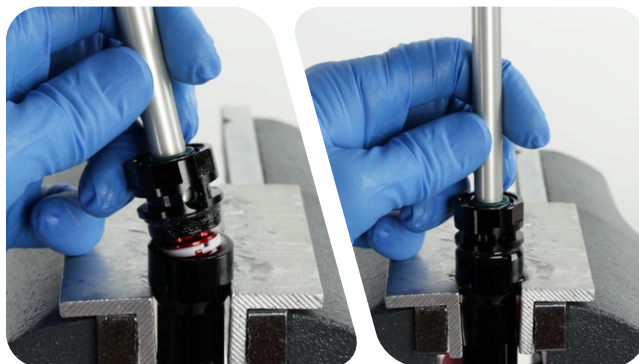
- 2 The rebound damper must be in the full open/fastest rebound setting before installation.

Insert the rebound adjuster knob into the rebound damper shaft until it contacts the rebound adjuster screw. Turn the knob counter-clockwise until it stops.

Remove the adjuster knob from the shaft.



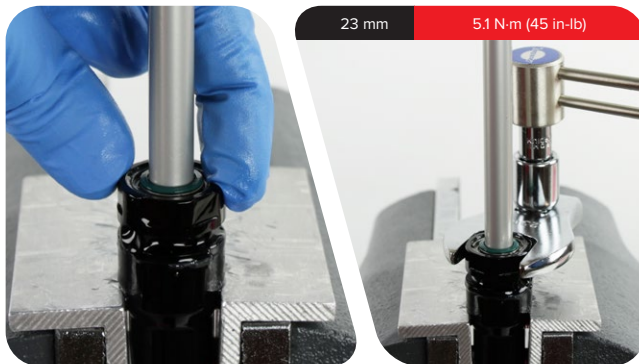
- 3** Insert the rebound damper piston slowly into the cartridge tube and thread the sealhead into the tube.



Tighten the seal head.

⚠ WARNING - CRASH HAZARD

Parts must be tightened to the specified torque. Failure to do so can result in **SERIOUS INJURY OR DEATH**.



- 4** Thread the rebound bottom bolt into the shaft 3-4 turns.



D a m p e r B l e e d

- 1 Draw 3wt suspension oil into a RockShox Bleed syringe until it is half full.

Hold the syringe upright, cover the tip with a shop towel, and gently depress the plunger to purge any air bubbles from the syringe.

NOTICE

Only use a RockShox bleed syringe.

Do not use syringes that have been in contact with DOT brake fluid. DOT brake fluid will permanently damage the seals and will cause the fork to malfunction.

CAUTION

Always wear safety glasses. Do not allow oil, fluid, grease, lubricant, or cleaner to contact your eyes or face. Seek immediate medical attention if irritation occurs.

- 2 Thread the syringe bleed fitting into the seal head bleed port. Depress the plunger to pressurize the damper assembly.

- 3 Push the rebound damper shaft into the cartridge tube while applying opposing pressure on the syringe plunger as the syringe fills with oil.

Pull the rebound damper shaft slowly out of the cartridge tube while applying opposing pressure on the syringe plunger as oil fills the damper.

Repeat this process until bubbles are no longer pulled from the damper into the syringe.



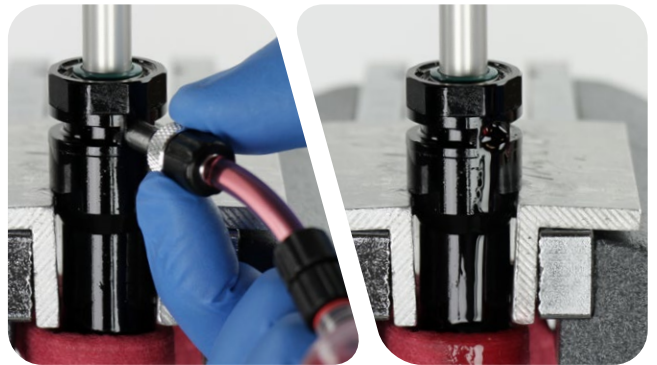
- 4 Fully extend the rebound damper shaft. Push the syringe plunger down, then release the plunger. Allow the bladder to expand and retract until it stops in a resting position.



- 5 Unthread the syringe bleed fitting from the bleed port.

⚠ CAUTION - EYE HAZARD

Oil may eject from the bleed port if the bladder is not in a resting position. Wear safety glasses.



- 6 Install the bleed screw and tighten it.

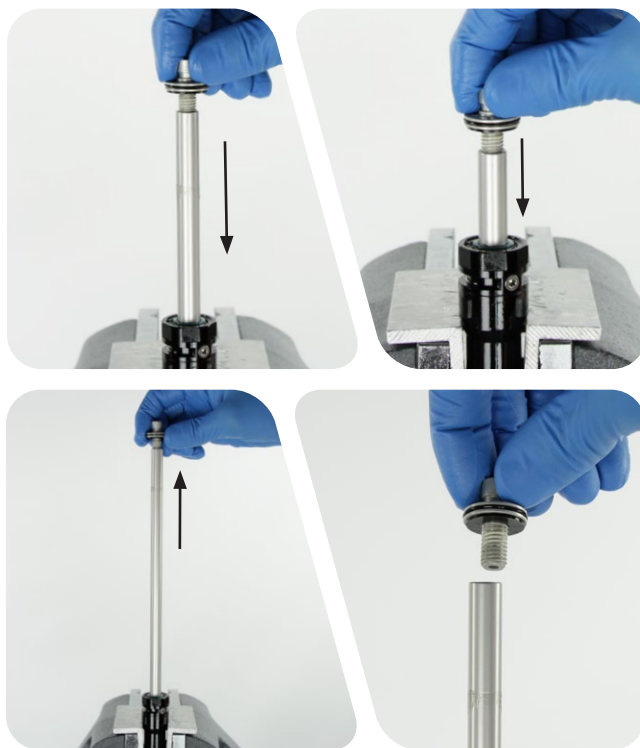
Wipe away any excess oil.

⚠ WARNING - CRASH HAZARD

Parts must be tightened to the specified torque. Failure to do so can result in SERIOUS INJURY OR DEATH.



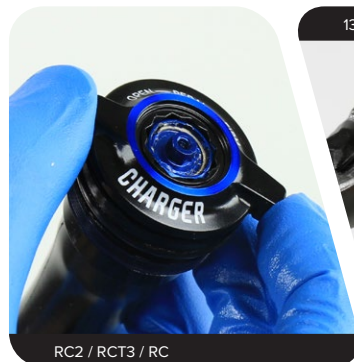
- 7** Cycle the rebound shaft a few times.
Remove the bottom bolt and clean the Charger 2 Damper/Charger 2.1 Damper assembly.



Test Lockout or Compression

1 RC2 / RCT3 / RC: Use the compression adjuster knob to rotate the compression cam clockwise, until it stops, to the locked out or firm position.

RCT R / RC R: Use a 13 mm socket to hold the cam locked out, full clockwise until it stops, while compressing the damper.



Push down on the damper assembly to test the bleed.

RCT3 / RCT R: The rebound damper shaft should not move more than 2 mm. If the shaft moves more than 2 mm while locked out, repeat the bleed process.

RC / RC R: Consistent resistance should be felt with no gaps in movement. If gaps are felt during compression, repeat the bleed process.

If the bleed was successful, rotate the compression cam counter-clockwise until it stops, to the unlocked position.



- 1 Install the Charger 2 Damper/Charger 2.1 Damper assembly into the damper side upper tube. Thread the top cap into the upper tube.



- 2 Tighten the top cap. Press down firmly when tightening the top cap.

⚠ WARNING - CRASH HAZARD

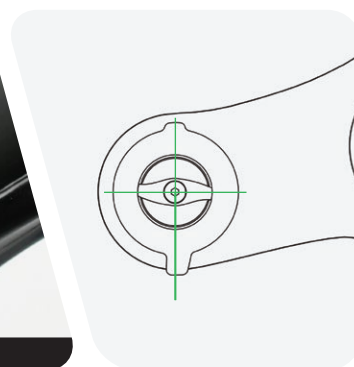
Parts must be tightened to the specified torque. Failure to do so can result in SERIOUS INJURY OR DEATH.



3a RCT3: Install the compression mode adjuster knob onto the top cap with the tab in the forward, unlocked position.



RCT3



RC2: Install the high speed compression adjuster knob.



RC2

RC2 / RCT 3: Install the low speed compression adjuster knob onto the hex adjuster rod

Install and tighten the retaining screw.

⚠ WARNING - CRASH HAZARD

Parts must be tightened to the specified torque. Failure to do so can result in SERIOUS INJURY OR DEATH.



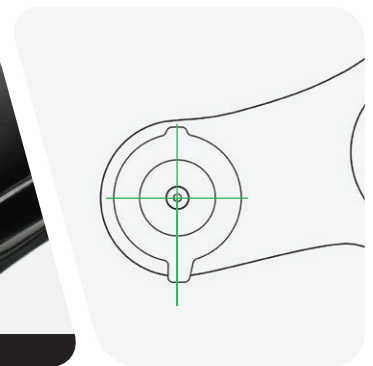
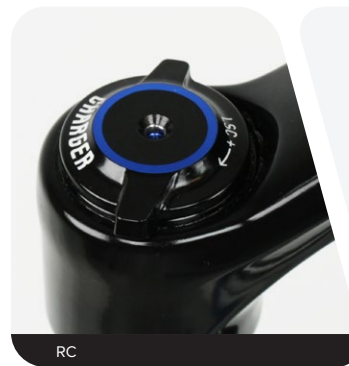
RCT 3



RC2



RC: Install the compression adjuster knob onto the top cap with the tab in the forward, unlocked, position.



Install and tighten the retaining screw.

⚠ WARNING - CRASH HAZARD

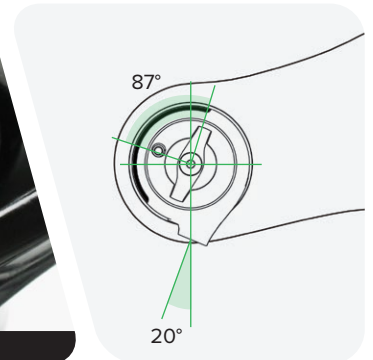
Parts must be tightened to the specified torque. Failure to do so can result in **SERIOUS INJURY OR DEATH**.



3b **RCT R:** Install the cable stop collar with the housing guide in the 6 o'clock forward position, oriented outward ≈ 20 degrees from center.

NOTICE

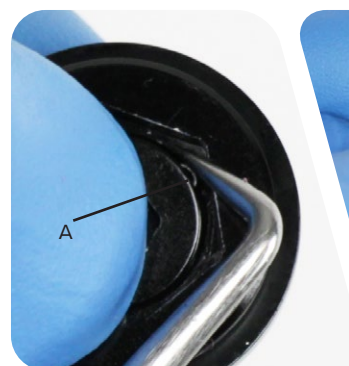
The cable stop collar and remote cable housing must clear the lower leg arch when the fork is fully compressed.



Push the low speed adjuster knob spring retainer (A) in and push the knob out of the remote spool.

Remove the top cap seal.

Clean each part.



Install the remote spool onto the hex adjuster with the spool cable set screw oriented within the 87° range zone.

Install the knob seal.



Install the low speed adjuster knob onto the hex adjuster. Install and tighten the knob retaining screw.

⚠ WARNING - CRASH HAZARD

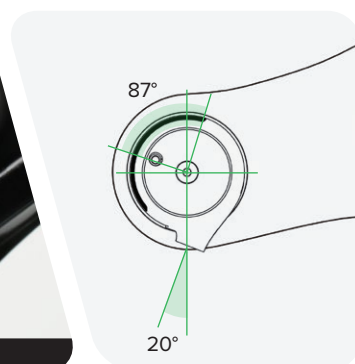
Parts must be tightened to the specified torque. Failure to do so can result in SERIOUS INJURY OR DEATH.



RC R: Install the cable stop collar with the housing guide in the 6 o'clock forward position, oriented outward $\approx 20^\circ$ degrees from center.

NOTICE

The cable stop collar and remote cable housing must clear the lower leg arch when the fork is fully compressed.



Install the remote spool onto the hex adjuster with the spool cable set screw oriented within the 87° range zone.

Tighten the spool retaining screw.

⚠ WARNING - CRASH HAZARD

Parts must be tightened to the specified torque. Failure to do so can result in SERIOUS INJURY OR DEATH.



4 RCT R / RC R: Tighten the cable stop collar set screw.

Consult the applicable remote user manual at www.sram.com/rockshox/components/remotes for cable and remote installation instructions.

⚠ WARNING - CRASH HAZARD

Parts must be tightened to the specified torque. Failure to do so can result in SERIOUS INJURY OR DEATH.

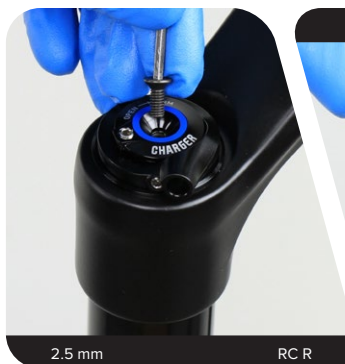


200 Hour Service Continue the 200 Hour Service with [Lower Leg Installation](#).

- 1 **RC:** Turn the compression adjuster knob counter-clockwise, to the full open position, until it stops.



- 2 Remove the retaining screw and remove the knob (RC) or remote spool (RC R).



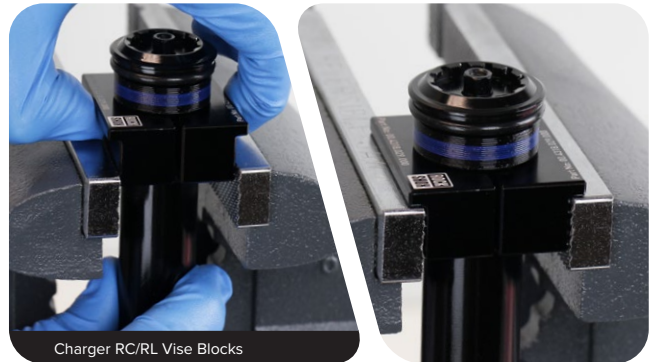
- 3 **RC R:** Loosen the set screw and remove the cable stop clamp.



- 4** Unthread the damper top cap and remove the damper assembly.
Clean the upper tube threads.



- 1 Clamp the cartridge tube into a vise with Charger RC/RL Vise Blocks.



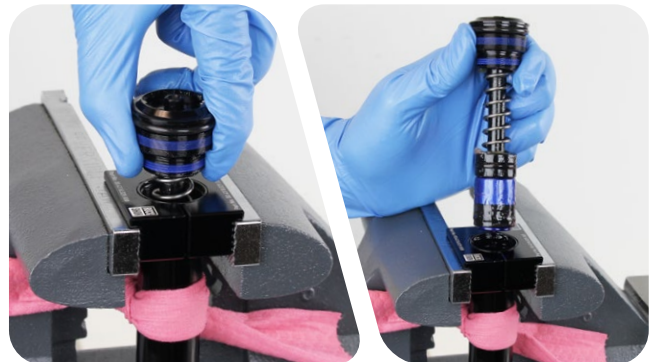
- 2 Unthread the top cap from the tube.

NOTICE

The cartridge tube and vise blocks must be dry and free of oil to provide enough grip to unthread the top cap. If the cartridge tube slips, clean and dry the tube and vise blocks.



- 3 Carefully remove the compression damper.
Wrap a shop towel around the cartridge tube under the top cap to absorb oil.



- 4 Remove the cartridge tube and rebound damper assembly from the vise and pour the oil into an oil pan.

Clean the exterior of the cartridge tube.

CAUTION

Always wear safety glasses. Do not allow oil, fluid, grease, lubricant, or cleaner to contact your eyes or face. Seek immediate medical attention if irritation occurs.

CAUTION

Place an oil pan on the floor underneath the product during service to catch any drained or spilled fluids. To avoid a slip and fall, and possible injury or harm, immediately clean any oil, fluid, grease, or lubricant from the floor in your work area.



- 5** Clamp the cartridge tube into a vise with Charger RC/RL Vise Blocks. Remove the rebound damper seal head and rebound damper. Remove the cartridge tube from the vise.



- 6** Remove the seal head from the rebound damper shaft. Discard the seal head.



- 7** Spray RockShox Suspension Cleaner or isopropyl alcohol into the cartridge tube and clean the inside of the tube with a clean shop towel and a thin dowel (≤ 16 mm diameter).

Inspect the inside of the cartridge tube for scratches.

NOTICE

Scratches on the inside surface of the tube can cause oil to leak. If an internal scratch is visible, the cartridge tube may need to be replaced.



- 8 Remove the o-rings from the compression damper and discard them. Apply grease to new o-rings and install them.



- 9 **Split Band Glide Ring:** The split band glide ring is not replaced during service and only requires cleaning. Do not remove.



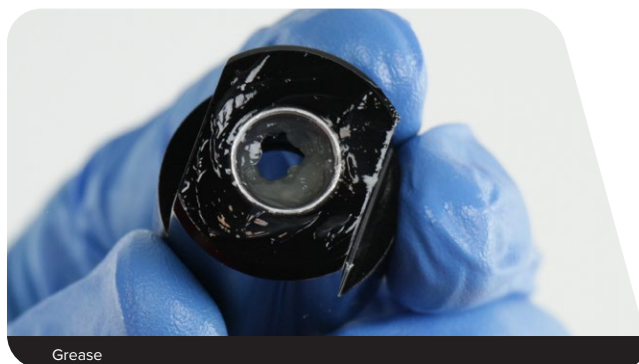
Solid Band Glide Ring: The solid band glide ring is not removable and only requires cleaning. Do not remove.



- 10** Apply grease to the inner seal and bushing in the new rebound damper seal head.

⚠ CAUTION

Always wear safety glasses. Do not allow oil, fluid, grease, lubricant, or cleaner to contact your eyes or face. Seek immediate medical attention if irritation occurs.



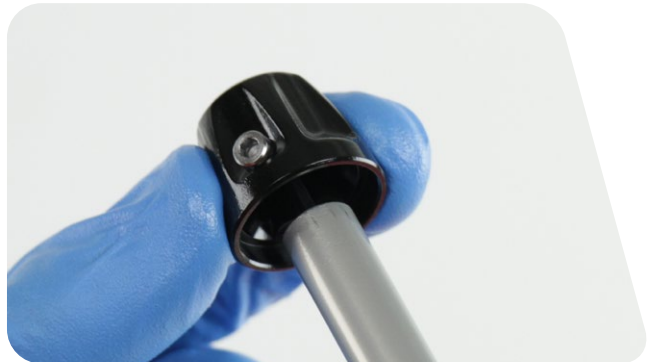
Grease

- 1 Apply grease to the end of the rebound damper shaft. Insert the rebound damper shaft into the recessed end of the seal head.

Slide the seal head toward the piston.



- 2 Insert the rebound adjuster knob into the rebound damper and rotate it counter clockwise until it stops. This is the full open position.



3 Clamp the seal head into the vise.

Split Band Glide Ring: Pinch the glide ring while installing the cartridge tube over the piston and glide ring.

Thread the tube into the seal head hand tight.

Pull the damper shaft to full extension.



4 Secure a shop towel around the cartridge tube to absorb oil.

Pour 3wt suspension oil into the tube until it is approximately half full.

CAUTION

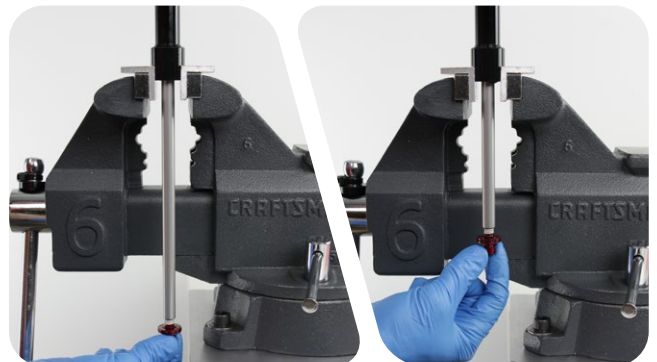
Always wear safety glasses. Do not allow oil, fluid, grease, lubricant, or cleaner to contact your eyes or face. Seek immediate medical attention if irritation occurs.



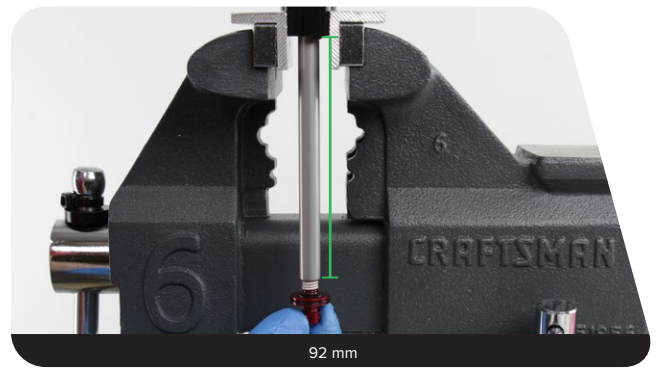
5 Thread a bottom bolt into the rebound damper shaft.

Slowly cycle the rebound damper in and out half way to remove air bubbles trapped under the rebound damper piston.

Stop when no bubbles are visible in the oil.



- 6** Push the rebound damper into the cartridge tube until there is **92 mm** (length) of shaft extended. Do not push the damper into the tube any further.



- 7** Pour 3wt suspension oil into the tube until the oil is just below the purge holes.

CAUTION

Always wear safety glasses. Do not allow oil, fluid, grease, lubricant, or cleaner to contact your eyes or face. Seek immediate medical attention if irritation occurs.



- 8** Insert the compression damper into the cartridge tube and slowly push it into the tube. The rebound damper will slowly extend as the compression damper is installed; this is normal.
Firmly push down and thread the top cap into the tube.



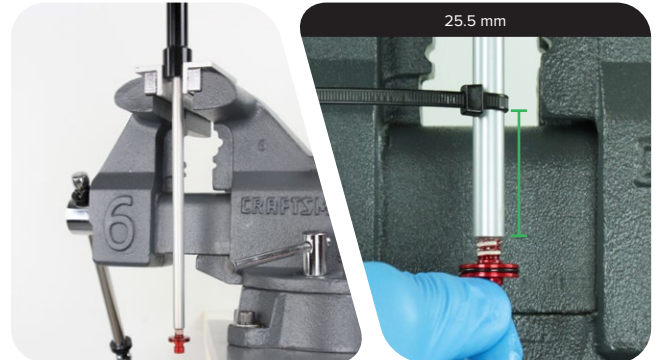
- 9 Tighten the top cap to the specified torque. The rebound damper seal head will be tightened onto the other end of the cartridge tube simultaneously.

⚠ WARNING - CRASH HAZARD

Parts must be tightened to the specified torque. Failure to do so can result in **SERIOUS INJURY OR DEATH**.



- 10 Pull the rebound damper to full extension. Secure a plastic cable tie around the shaft **25.5 mm** from the end of the shaft.



- 11 Cover the oil purge hole(s) with the secured towel.

⚠ CAUTION

Oil may exit the cartridge tube purge hole(s). Wear safety glasses and keep your eyes and face away from the purge hole(s) when compressing the rebound damper.



- 12 Slowly push the rebound damper shaft into the tube until the cable tie contacts the seal head, then stop. **Do not push the damper in any further.**

Slowly, pull the shaft out to full extension.

Repeat 3-5 more times. This will allow any excess oil and air to escape from system.

Remove the bottom bolt. Remove the damper assembly from the vise and clean it with a shop towel.

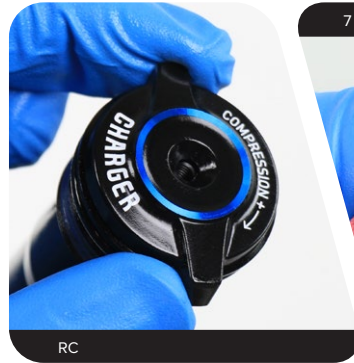
Do not remove the cable tie.



Test Compression

1 RC: Use the adjuster knob to rotate the compression cam clockwise, until it stops, to the firm position.

RC R: Use a 7 mm wrench to hold the cam closed, full clockwise until it stops, while compressing the damper.



The cable tie must be **25.5 mm** from the end of the shaft. **Do not compress the rebound damper further than this point.**

Cover the oil purge hole(s) with the secured towel.

⚠ CAUTION

Oil may exit the cartridge tube purge hole(s). Wear safety glasses and keep your eyes and face away from the purge hole(s) when compressing the rebound damper.

Push down on the damper assembly slowly to test the firmest compression setting. Firm and consistent resistance should be felt with no gaps in movement.

Rotate the compression damper to open setting and repeat the compression test. Light consistent resistance should be felt with no gaps in movement.

If gaps are felt during compression, repeat the oil fill and purge process. If the assembly process was successful, set the compression damper to the open setting and remove the cable tie.



- 1** Install the Charger Damper RC or RC R assembly into the damper side upper tube. Thread the top cap into the upper tube and tighten it. Press down firmly when tightening the top cap.

⚠ WARNING - CRASH HAZARD

Parts must be tightened to the specified torque. Failure to do so can result in SERIOUS INJURY OR DEATH.



- 2** **RC:** Install the adjuster knob with the tab in the 7-8 o'clock, unlocked, position.



Install and tighten the retaining screw.

⚠ WARNING - CRASH HAZARD

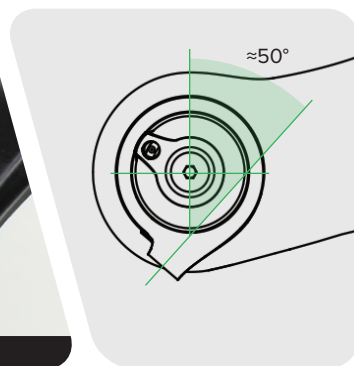
Parts must be tightened to the specified torque. Failure to do so can result in SERIOUS INJURY OR DEATH.



- 3 RC R:** Install the cable stop collar with the housing guide in the 6 o'clock forward position, oriented outward $\approx 50^\circ$ degrees from center.

NOTICE

The cable stop collar and remote cable housing must clear the lower leg arch when the fork is fully compressed.



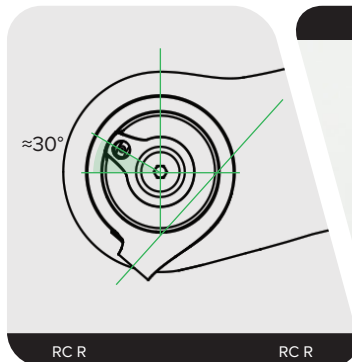
Tighten the set screw.

⚠ WARNING - CRASH HAZARD

Parts must be tightened to the specified torque. Failure to do so can result in SERIOUS INJURY OR DEATH.



Install the remote spool onto the hex adjuster with the cable set screw oriented in the 10 o'clock position, ≈ 30 degrees from center.



Install and tighten the remote spool retaining screw.

Consult the applicable user manual at www.sram.com/rockshox/components/remotes for cable and remote installation instructions.

⚠ WARNING - CRASH HAZARD

Parts must be tightened to the specified torque. Failure to do so can result in SERIOUS INJURY OR DEATH.

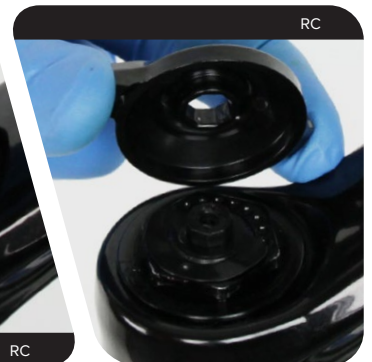


200 Hour Service Continue the 200 Hour Service with [Lower Leg Installation](#).

- 1 **RC:** Turn the compression adjuster knob counter-clockwise, to the full open position, until it stops.



- 2 Remove the retaining screw and remove the knob (RC) or remote spool (RC R).



- 3 **RC:** Remove the detent spring.



- 4** **RC R:** Loosen the set screw and remove the cable stop clamp.

Remove the lower remote spool.



- 5** Unthread the compression damper top cap.
Remove the compression damper by pulling up firmly and slowly, while gently rotating the damper in a circular motion.

NOTICE

Do not force the damper out of the upper tube if there is resistance. This can cause separation of the piston from the damper tube.



- 6 Remove the fork from the work stand and pour the suspension oil into an oil pan.

⚠ CAUTION

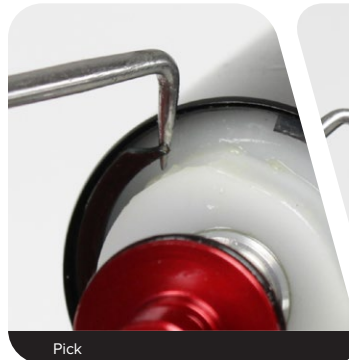
Oil may exit the cartridge tube purge hole(s). Wear safety glasses and keep your eyes and face away from the purge hole(s) when compressing the rebound damper.



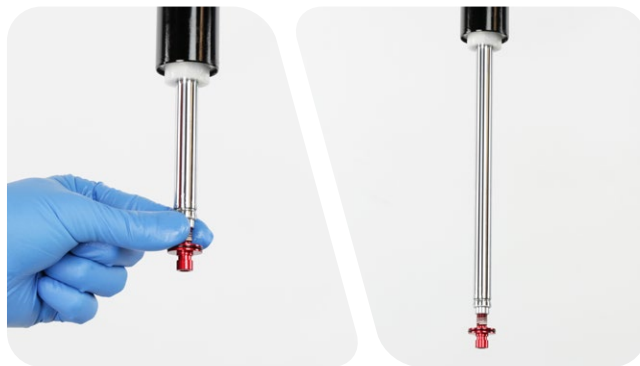
- 7 Clamp the fork into the work stand.
Thread the bottom bolt onto the rebound damper shaft and push the shaft into the upper tube.



- 8 Use a sharp pick to pry the curved end of the retaining ring out of the groove. Carefully slide the pick around the rim of the upper tube to pry the retaining ring from the upper tube, and remove the retaining ring.



- 9 Pull the rebound shaft to full extension.



- 10 Remove the rebound damper and seal head.



- 11 Clean the inside and outside of the upper tube.
Inspect the inside and outside of the upper tube for scratches.

NOTICE

Scratches on the inside surface of the upper tube can cause oil to leak. If an internal scratch is visible, the crown steerer upper tube assembly may need to be replaced.



- 1 Remove the compression damper top cap o-ring and piston u-cup seal.
Apply grease to the new o-ring and seal, and install them.



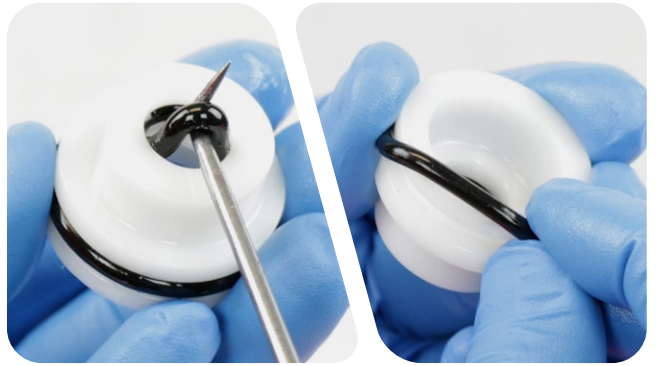
- 2 Remove the bottom bolt.
Remove the seal head.
Clean the damper shaft and inspect the shaft for scratches.

NOTICE

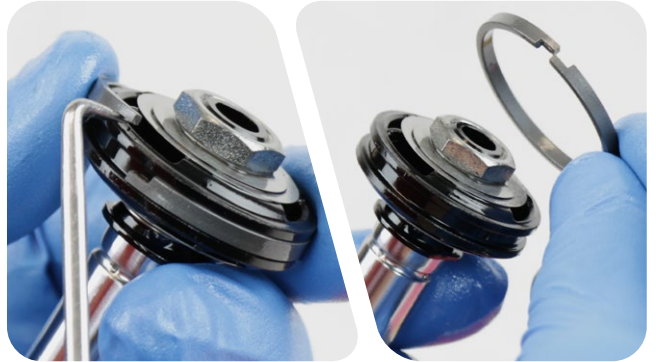
Scratches on the shaft can cause oil to leak. If a scratch is visible, the rebound damper may need to be replaced.



- 3** Remove the inner and outer seal head o-rings and discard them.
Apply grease to the new o-rings and install them.



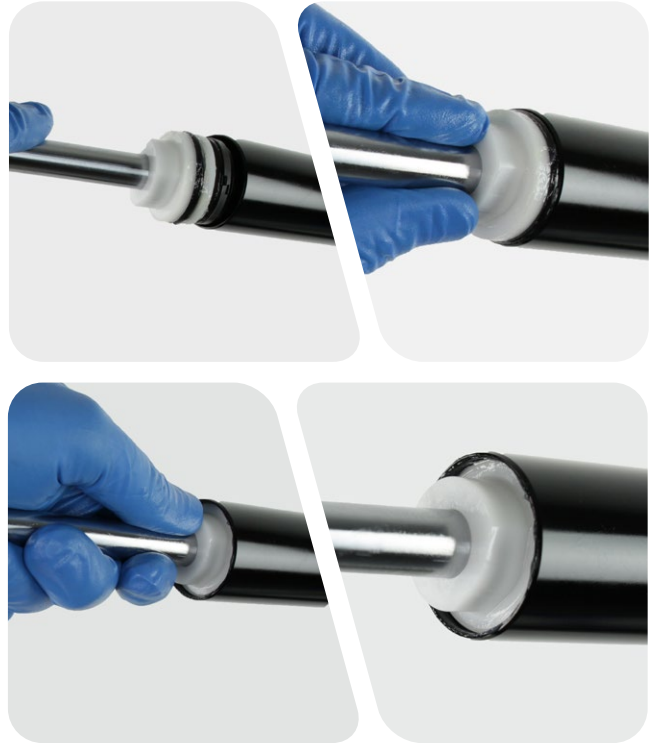
- 4** Remove the glide ring and discard it.
Install a new glide ring.



- 5** Install the seal head onto the rebound damper shaft.



- 1** Insert the rebound damper and seal head into the upper tube.
Push the seal head into the upper tube until the retaining ring groove is visible.



- 2** Push the rebound damper into the upper tube and thread a bottom bolt into the shaft.



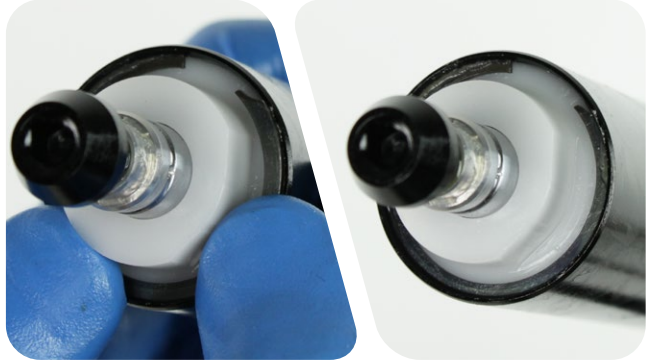
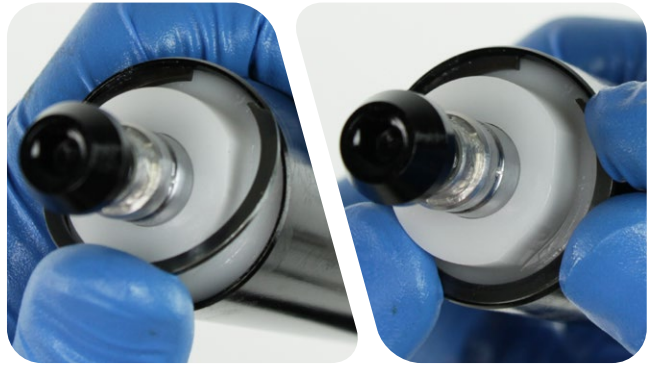
- 3** Insert the flat end of the retaining ring into the upper tube groove. Use your finger to push the retaining ring into the groove while guiding it around the upper tube until the entire ring is fully seated into the groove.

⚠ CAUTION

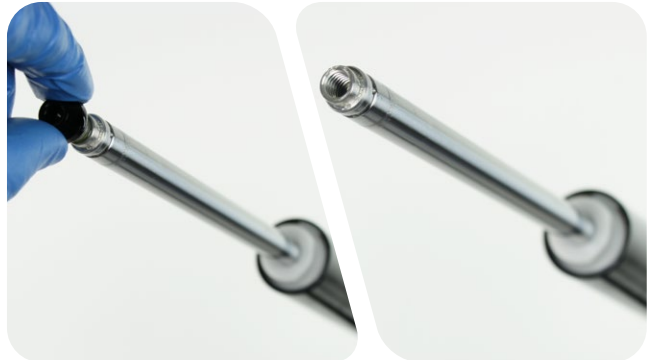
Verify the retaining ring is securely in place with a pick before continuing. Failure to properly secure the retaining ring may result in separation of the seal head, rebound damper, and upper tube.

NOTICE

Do not scratch the rebound damper shaft. Scratches will allow oil to leak into the lower leg, resulting in reduced damping performance.



- 4** Pull the rebound damper shaft out to the fully extended position and remove the bottom bolt.



- 1 Pour RockShox 5wt suspension oil into the upper tube.

NOTICE

Suspension oil volume is critical. Too much oil reduces available travel and can damage the fork. Too little suspension oil decreases damping performance.

CAUTION

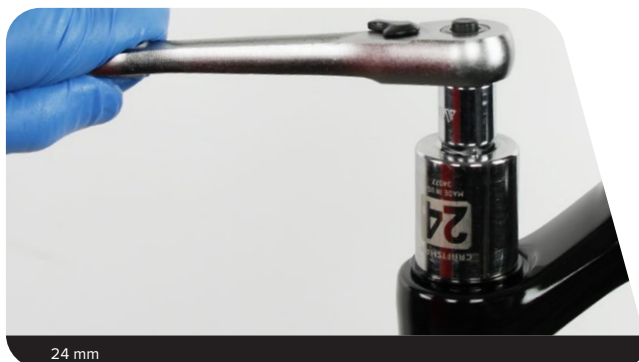
Always wear safety glasses. Do not allow oil, fluid, grease, lubricant, or cleaner to contact your eyes or face. Seek immediate medical attention if irritation occurs.



- 2 **RC:** Use the compression adjuster knob to open the valve (A).
A closed compression valve will restrict oil flow during installation.



- 3 Insert the compression damper into the upper tube. Press down slowly and rotate in a circular motion until the damper is installed. Thread the top cap into the upper tube.



- 4 Tighten the top cap. Press down firmly when tightening the top cap.

⚠ WARNING - CRASH HAZARD

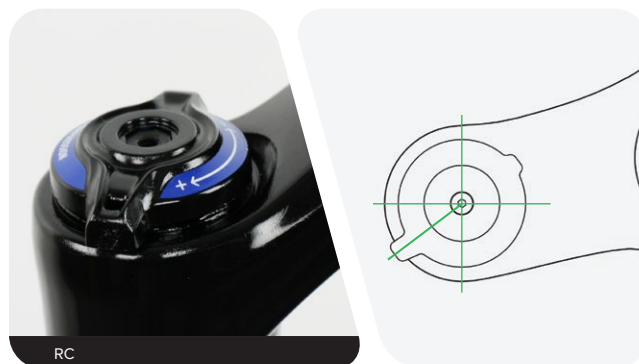
Parts must be tightened to the specified torque. Failure to do so can result in SERIOUS INJURY OR DEATH.



- 5 **RC:** Apply grease to the top cap detents.
Install the detent spring.



- 6a **RC:** Install the adjuster knob with the tab in the 7-8 o'clock, unlocked, position.



Install and tighten the retaining screw.

⚠ WARNING - CRASH HAZARD

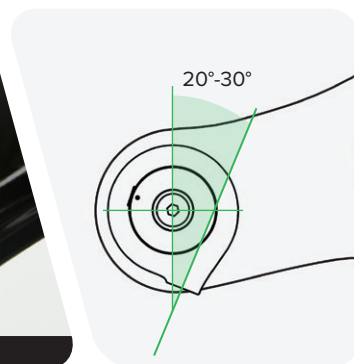
Parts must be tightened to the specified torque. Failure to do so can result in SERIOUS INJURY OR DEATH.



6b RC R: Install the cable stop collar with the housing guide in the 6 o'clock forward position, oriented outward $\approx 20^\circ$ - 30° degrees from center.

NOTICE

The cable stop collar and remote cable housing must clear the lower leg arch when the fork is fully compressed.



Tighten the set screw.

⚠ WARNING - CRASH HAZARD

Parts must be tightened to the specified torque. Failure to do so can result in SERIOUS INJURY OR DEATH.



Install the lower remote spool (A) onto the hex adjuster. Install the upper spool with the alignment indicator dot (B) positioned within the range bracket (C).



Install the spool retaining screw, thread it in and stop when it contacts the upper spool. Do not tighten the screw.

Consult the applicable user manual at www.sram.com/rockshox/components/remotes for cable and remote installation instructions.



- 1 Clean the upper tubes.



- 2 Apply grease to the inner surfaces of the dust wiper seals.

CAUTION

Always wear safety glasses. Do not allow oil, fluid, grease, lubricant, or cleaner to contact your eyes or face. Seek immediate medical attention if irritation occurs.



- 3 Install the lower leg assembly onto the upper tubes and slide it just enough to engage the upper bushings with the upper tubes.

NOTICE

Make sure both wiper seals slide onto the tubes without folding the outer lip of either seal.



The inside bottom of the lower leg should not contact the spring or damper shafts. A gap between the shaft ends and the lower leg bolt holes should be visible.



- 4 Position the fork at an angle with the bolt holes oriented upward. Inject suspension oil into each lower leg through the bottom bolt holes.

NOTICE

Do not exceed the recommended oil volume per leg as this can damage the fork.

CAUTION

Always wear safety glasses. Do not allow oil, fluid, grease, lubricant, or cleaner to contact your eyes or face. Seek immediate medical attention if irritation occurs.



- 5 Slide the lower leg assembly toward the crown until it stops.

The spring and damper shafts should be visible through the bottom bolt holes.

Verify each shaft is centered and seated in the lower leg shaft/bolt hole and no gap is visible between the lower leg and the shaft end.



6

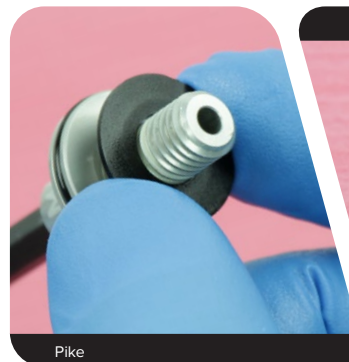
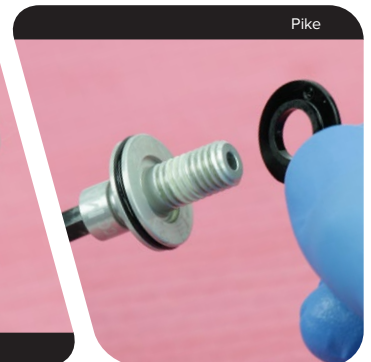
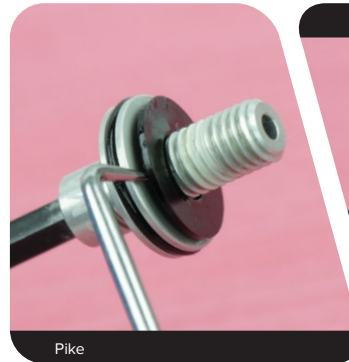
200 Hour Service Remove the old crush washers from each bottom bolt.

Hold the crush washer with needle nose pliers and unthread it from the bolt by turning the bolt counter-clockwise. Discard the crush washers.

Clean the bolts and install new crush washers.

NOTICE

Dirty or damaged crush washers can cause oil to leak from the fork.



- 7 Install the black bottom bolt into the spring side shaft.
Install the silver or red bottom bolt into the damper side shaft.

⚠ WARNING - CRASH HAZARD

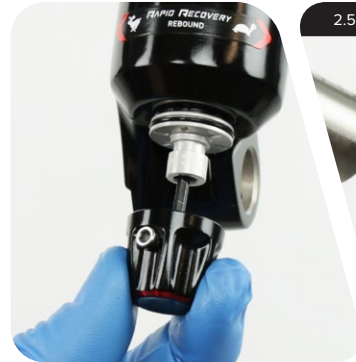
Parts must be tightened to the specified torque. Failure to do so can result in SERIOUS INJURY OR DEATH.



- 8 Install the rebound damper knob and tighten the set screw.
Do not over-tighten the set screw. Over-tightening will seize the adjuster knob and it will not turn.
Refer to your pre-service recorded rebound setting to adjust the rebound damping.

⚠ WARNING - CRASH HAZARD

Parts must be tightened to the specified torque. Failure to do so can result in SERIOUS INJURY OR DEATH.



- 9 Refer to your pre-service recorded settings, or use the air chart on the fork's lower leg, and pressurize the air spring.
You may see a drop in the indicated air pressure on the pump gauge while filling the air spring; this is normal. Continue to fill the air spring to the recommended air pressure.
Cycling the fork will equalize the positive and negative air chambers. After the fork is cycled 3-4 times, check the pressure and add air as needed.
Install the air valve cap.



10 Clean the entire fork.



This concludes the service of your RockShox Pike or Revelation suspension fork.



ASIAN HEADQUARTERS

SRAM Taiwan
No. 1598-8 Chung Shan Road
Shen Kang Hsiang, Taichung City
Taiwan

WORLD HEADQUARTERS

SRAM, LLC
1000 W. Fulton Market, 4th Floor
Chicago, Illinois 60607
U.S.A.

EUROPEAN HEADQUARTERS

SRAM Europe
Paasbosweg 14-16
3862ZS Nijkerk
The Netherlands