

# 2105

**ZIPF®**

---

(english) **spare parts catalog**



---

## **SRAM® ORIGINAL PARTS**

### **CAUTION:**

The SRAM Warranty policy does not cover damages caused by the use of non-SRAM parts.

Use only SRAM parts with SRAM components.

Installation of parts and accessories not originally intended could result in less than optimal performance and/or injury.

For in-depth service information on SRAM products, refer to our website at [www.sram.com/service](http://www.sram.com/service). Contact your local SRAM distributor or dealer for ordering information.

Information contained in this publication is subject to change at any time without prior notice. Your product's appearance may vary from the diagrams contained in this catalog.







## TABLE OF CONTENTS

### ZIPP®-WHEELS

6,7 Hub/Freehub Identification



8,9 88/188

10 30/60

11 82/182,202/282



12 Disc/Track

13,14 Spokes/Nipples/Washers

15 Wheel/Disc Decals

### ZIPP®-BARS/STEM/SEATPOST

16 VukaAero™ 22.0mm



17 Vuka Alumina 22.2mm

18 Vuka Stealth™

19 Carbon Seatposts

20 Aluminum Seatposts



21 Carbon Stems

22 Aluminum Stems

### ZIPP®-BARS/STEM/SEATPOST

23 VukaAero™ 22.0mm





---

## NOTES

---





## 2014 Zipp V9 88/188 Hubs

Starting in September 2013 all Firecrest Carbon Clincher and Tubular rim-brake wheelsets, as well as the 202 Tubular wheelset, will be built with the latest iteration of our 188 rear hub, the V9, and a more effective spoke-lacing pattern. The refinements result in improved torsional and lateral stiffness as well as improve durability.

### Details of the 188/V9 hub:

- Bearings:** Larger Swiss steel bearings with a custom cartridge increase durability by more evenly spreading load over the axle.
- Lacing:** New “virtual 3 cross” lacing on both sides of rear wheel for improved stiffness, achieving 3 cross stiffness in a two cross pattern with a new spoke geometry.
- Stiffness:** The 188/V9 has 25 percent more torsional stiffness than a leading competitive hub. This measure of stiffness is crucial for the direct power transfer to the rear wheel for out-of-the saddle sprints and climbs. The new hub also is laterally (side-to-side) stiffer than its rival or predecessor.

## 2013 Zipp V8 188 Hub for 11 Speed

In October 2012 a new rear hub version was released to accommodate Shimano 11 and Campagnola 11 speed drive chains. The 188 V7 (2012 gray and black) rear hub was modified as follows:

1. Overall drop to drop length (OLD) is increased by 0.8mm
2. Axle internal diameter is reduced by 1.0mm (walls are thickened to increase axle strength)
3. Non-drive side rear end cap is reduced by 1mm, ‘O’ ring removed and colored black
4. New 11 speed free hub with laser etching, serial number and shim for 10 speed

The V8 88/188 hubs are only available in black, they build a rear wheel which is more durable and marginally stiffer at the same spoke tension. The axle, end cap and free hub are not compatible with the older hub versions (2009-2012). A conversion service is available for only for 2012 188 hubs (gray or black) from Zipp certified wheel builders. The conversion kit is not sold after-market.

### November 2012 –

Revised V6 black rear axle with thicker wall and anodized treatment replaces original gray V6 axle. Note the revised axle uses the black end cap and not the red or blue.

### 88/188 – October 2011

Re-design (V7) and improve the current 88/188 hubs with canted, rear, non-drive flange and rear axle changed to accommodate 7.5mm wider non-drive bearing location. Hubs are offered in two color options - falcon gray and beyond black across the wheel line, (October 2011). These changes improve rear 188 hub axle durability and allow 6% stiffer wheels to be built with the same spoke tension. On the 88 front hub, the only change is the color options – the silver and ZedTech hub 88/188 hub versions are discontinued.

Note: the rear 188 hub shell and axle are NOT compatible with the earlier silver version. The bearings (61803) end caps and seals remain unchanged.

## ZIPP 188 REAR AND 88 FRONT HUBS (2009)

A completely new design, these hubs have a 17mm axle, pawls with individual leaf springs, 32 teeth ratchet ring, slotted flanges, aero clinch nuts, internal seals and lateral play adjustment. Front end caps are smoke colored with blue/smoke or red rear end caps. Wheel lacing is reversed with 2x drive and radial non-drive spoke pattern. Free hubs are NOT inter-changeable and require a separate conversion kit that includes spacers, seal and matching end cap. Maintenance instructions are available including exploded diagrams. The rear end caps on Shimano hubs changed from smoke to red in November 2009.

In May 2010 the 88 front hub spoke retention ring and clinch nut were altered. The spoke retention ring was made thinner, clinch nut diameter enlarged and the boss shape changed.

## 2013 Zipp 188 V8 Free Hub for 11 Speed

1.85mm spacer needed to run 10 speed with 2013 V8 11 speed free hub

The 11 speed free hub is not compatible with the previous version (V7) of the 188 free hub. It is recognized by the yellow laser etching and is assigned an individual serial number. This free hub must be used with the 2013 black axle and non-drive side end-cap. To run 10 speed with this free hub, you will need the extra spacer, supplied with new wheels and conversions.

### July 2012 - Campagnolo 11 Electronic

To accommodate Campy 11 electronic, we re-machined blue anodized Campagnola free hubs to remove a small notch at the start of the splines. During July 2012 all available 182 and 188 free hubs were reworked. Going forward new blue Campy 11 free hubs will be fully anodized with no silver markings.





## **Free hubs Zipp 188 hubs 2009 – Present**

Major changes in pawl design and shape. Each pawl now has its own leaf spring. Pawl socket ring is scalloped, seal is black. These free hubs are NOT interchangeable with earlier 182 or 208 models and are only sold in a conversion kit with seals, shims and endcaps. Note the 61803 bearings to accommodate the larger 17mm axle.

## **ZIPPER 182 REAR and 82 FRONT HUBS (2006-2008)**

These hubs are distinguished from the 202/84 model by brightly colored free hub bodies (Shimano red, Campagnolo blue), a plastic retaining ring behind the carbon hub caps, a reduction in weight (30g), redesigned pawl springs and an increase in the rear ear flange dimensions (52mm).

## **Free hubs Zipp 182 - 208 hubs 2005-2008**

Machined and forged / Shimano red Campagnolo blue

The difference between machined and forged Shimano free hub bodies is a dull, deeper maroon, rougher surface finish and a scribed ring 1/3 towards the seal between the body and the red pawl carrier in the forged body. Since mid year 2005, Shimano free hubs are red and Campagnolo are blue. These bodies have 2 x 61082 bearings and a red seal between the pawl carrier and the main body.

## **ZIPPER 202 REAR and 84 FRONT hubs (2002-2005)**

Al alloy silver polished hub bodies, most easily recognized by carbon weave protective end caps on both front and rear hubs. Available for either Shimano or Campagnolo, the bodies are interchangeable, but are not compatible with earlier models due to over-sized 15mm axle on the 202 rear and 84 front hubs.

There are 2 versions of the silver free hub body for this hub model. The 202W free hub has a solid silver ring on the free hub side adjoining the pawls, while the 202P has grooves that are machined all the way through with a slight 'lip' at the end of each spline. Status discontinued (2012), spare parts (e.g. axles and non-drive end caps) may not be available or will be very hard to find.

## **Free Hubs 202P and 202W models**

This is where we find the largest confusion. 202P has the grooves extending all the way across the main body with a small lip on the splines. The 202W (Shimano) has a solid silver ring at the back between the pawl carrier and the main body, the grooves are blocked.

## **ZIPPER 282 REAR AND 102 FRONT HUBS (1999 to 2001)**

The 102 front and 282 rear hubs are an ideal combination of performance, weight, durability, and value. Recognizable from other Zipp hubs by their black anodized all aluminum hub construction; the 102 and 282 are available for both Shimano 8/9 speed and Campagnolo 9/10 speed systems. The 102 and 282 are the first Zipp hubs to utilize butted or oval straight pull spokes. Free-hub bodies are interchangeable. Both front and rear hubs turn on the highest quality industrial cartridge bearings available. These bearings were used in a number of subsequent Zipp wheel sets. If you need parts for the 2 pawl earlier 282 hub (often called the Swiss version), you must change axle, end caps and free-hub to upgrade to the 3 pawl (USA) model. Hub maintenance notes. Status: discontinued, parts are difficult to find.

Note: early 282 hubs may be silver. When interchanging free hub bodies, check to see if the existing hub uses two or three pawls in the engagement mechanism and check bearing seal color.

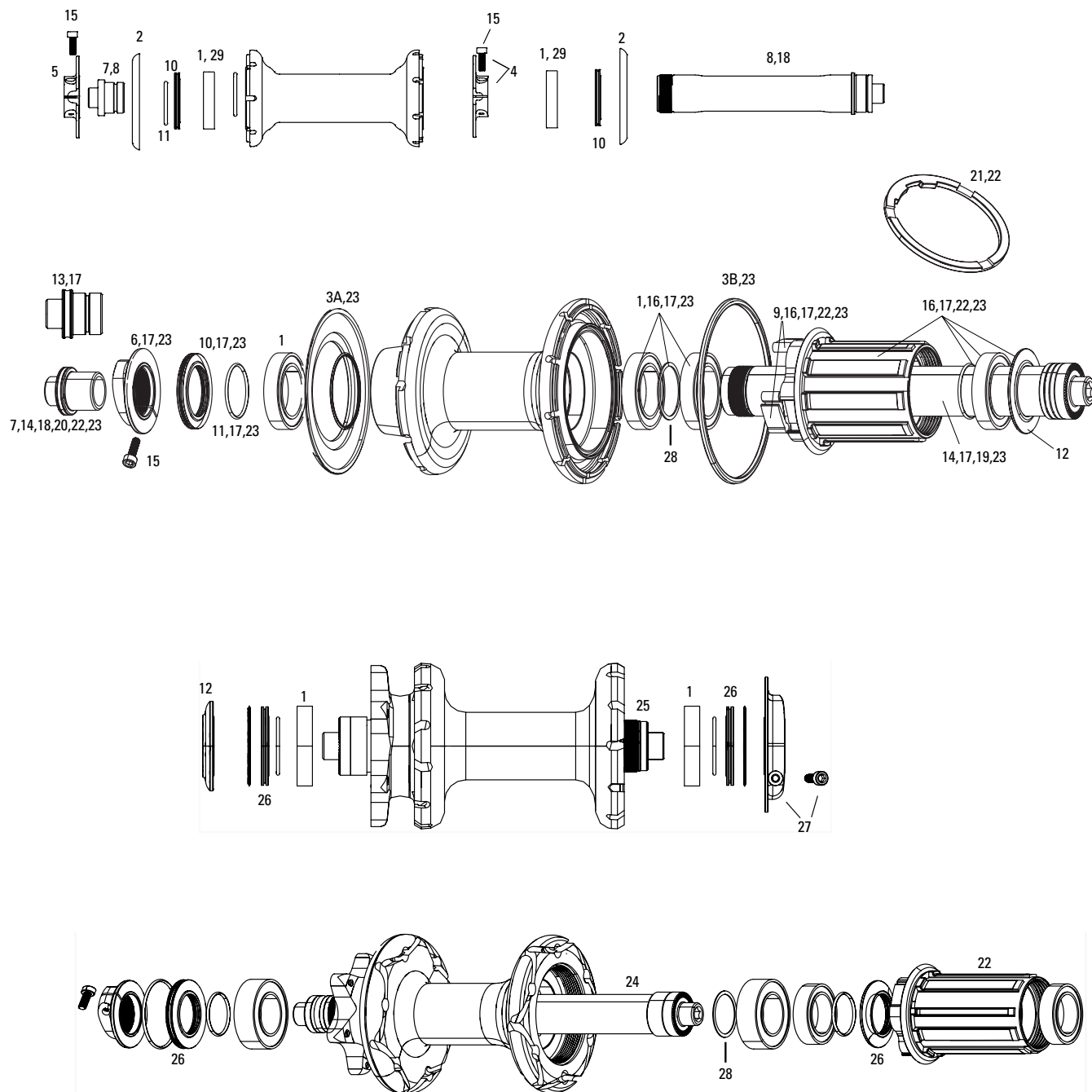
In mid-2001 a 'USA' built version of the 282 was introduced. It is laser etched in the center of the hub flange with "USA" in silver on the black hub shell. Free-hub bodies are not inter-changeable between earlier 'swiss' versions and the usa version. Model 102 front: flange diameter = 23mm, center to flange = 39mm. Model 282 rear free hub: drive side flange = 51mm, non-drive flange = 33.5mm, center to drive side flange = 12mm, center to non-drive flange = 35mm. Maintenance notes.

Free hub bodies: 'USA' have blue bearings seals, 'Swiss' has black bearing seals - not inter-changeable.

## **Free Hubs 282 models**

Champagne color with a solid back ring between the splines and the pawl carrier.





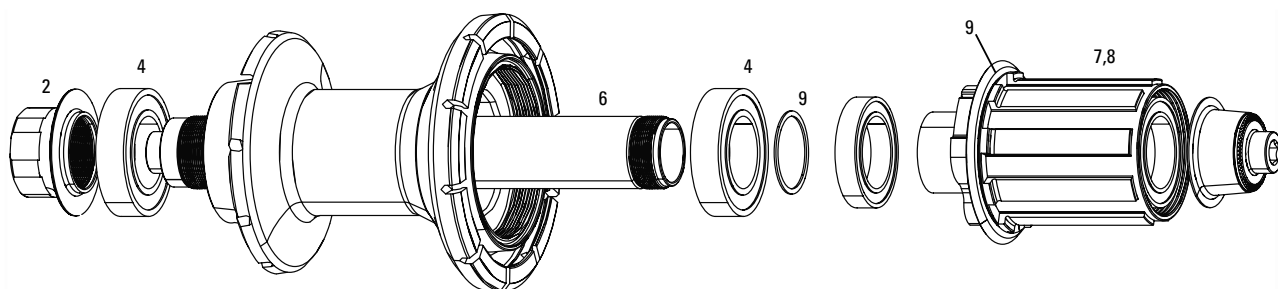
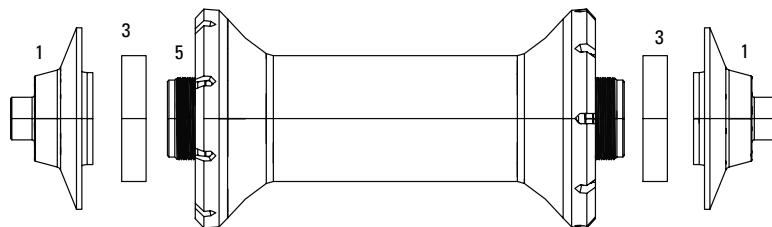




## No. Part Number Description

1	11.1915.028.000	Hub Bearings Front or Rear Zipp 88/188 Pair
2	11.2018.001.000	Reinforce Ring Radial Side Black Front 88v7
2	11.1915.030.000	Reinforced Ring Radial Front Zipp 88 Smoke
3A	11.1915.042.000	Reinforced Ring Non-Drive Smoke Zipp 188 Smoke
3A	11.2018.001.001	Reinforce Ring Nondrive Side Black Rear 188v7
3B	11.1915.043.000	Reinforced Ring Radial Smoke Zipp 188 Smoke
3B	11.2018.001.002	Reinforce Ring Radial Side Black Rear 188v7
4	11.1915.031.000	Clinch Nut Non-Threaded Silver Front Zipp 88 with Screw
4	11.2018.000.000	Clinch Nut and Screw Non-Threaded Black Front 88v7
5	11.1915.032.000	Clinch Nut Threaded Silver Front Zipp 88 with Screw
5	11.2018.000.001	Clinch Nut and Screw Threaded Black Front 88v7
6	11.1915.044.000	Clinch Nut Threaded Silver Rear Zipp 188 with Screw
6	11.2018.000.002	Clinch Nut and Screw Threaded Black Rear 188v7
7	11.1915.033.000	Axle End Cap Front Zipp 88 Hub
8	11.1915.034.000	Front Axle with End Cap Zipp 88 Hub
9	11.1915.035.000	Spring and Pawl Set for Zipp 188 Rear Hub Qty 4
10	11.1915.036.000	Bearing Shield Front or Rear Zipp 88/188
11	11.1915.037.000	O-Ring Bearing Shield Front or Rear Zipp 88/188 Hub Qty 5
12	11.1915.040.000	Dust Cap Shield Freehub Zipp 188 Campagnolo
12	11.1915.040.010	Dust Cap Shield Freehub Zipp 188 SRAM/Shimano
13	11.1915.045.000	Axle End Cap Rear Zipp 188 SRAM/Shimano
13	11.1915.045.010	Axle End Cap Rear Zipp 188 Campagnolo
14	11.2100.096.000	Zipp Axle for 188 Silver Rear Hub Black 13mm inner diameterwith Black End Cap (V6)
15	11.2015.036.000	Clinch Nut Set Screw Zipp 88/188 M25x8
16	11.2100.094.000	Freehub Conversion Kit 188 Shimano
16	11.2100.094.010	Freehub Conversion Kit 188 Campy
16	11.2100.094.020	Freehub Conversion Kit 188 Shimano Ceramic
17	11.2100.108.000	Road Conversion Kit Disc 188 (Super 9) Axle & Shimano FH
17	11.2100.109.000	Road Conversion Kit Disc 188 (Super 9) Axle & Campy FH
18	11.1918.006.000	Front Axle with End Cap Zipp Black 88 Hub
19	11.1915.086.000	Zipp Axle for 188 Black Rear Hub Black 14mm inner diameter,no End Cap (V7)
19	11.1918.010.000	Zipp Axle for 188 11 speed Rear Hub Black 13mm inner diameter with Black End Cap (V8)
20	11.1918.011.000	Axle End Cap Rear Zipp 188 11 speed SRAM for 13mm inner diameter axle
21	11.1918.008.000	Cassette Spacer 10 speed 188 SRAM Freehub 11 speed
22	11.1918.007.000	Freehub Kit 188 11 speed SRAM
22	11.1918.007.001	Freehub Kit 188 11 speed Campagnolo
23	11.1918.009.000	Conversion Kit 10 Speed to 11 Speed 188 SRAM
ns	11.1915.039.000	O-Ring End Cap Front or Rear Zipp 88/188 Qty 5
ns	11.2100.107.000	Track Axle Conversion Kit Disc 188 (Super 9)
ns	11.1918.026.000	Conversion Kit Disc 11 Speed to Track 188 Black
24	11.1918.019.000	Axle Rear Zipp 188 Disc Brake W/End Cap
25	11.1918.019.001	Axle Front Zipp 88 Disc Brake W/End Cap
26	11.2018.015.000	Bearing Shield Front or Rear Zipp 88/188 Disc Brake
27	11.2018.016.000	Clinch Nut and Screw Threaded Black Front 88 Disc Brake
28	11.1915.038.000	Freehub Body Spacer Zipp 188 Rear Qty 2
29	11.1918.183.000	ZIPP CeramicSpeed Bearing Kit - 61803 - ZIPP 30/60 88 Front Hub Shell, (bearings and one grease syringe)

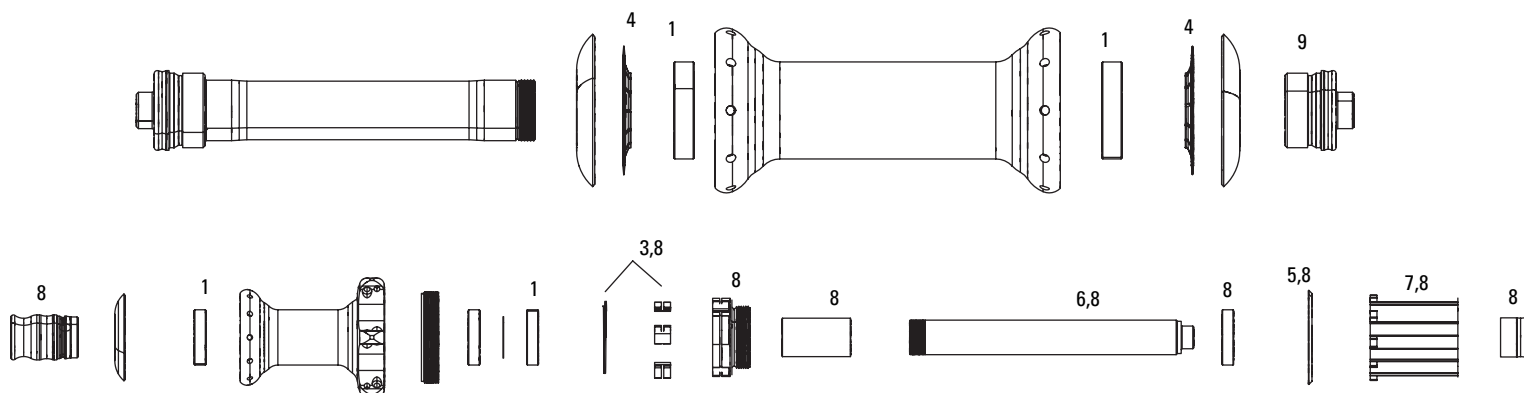




No.	Part Number	Description
-----	-------------	-------------

1	11.1918.020.000	End Cap Front 30/60 Black
2	11.1918.020.001	End Cap Assembly Non Drive Rear 30/60 Black
3	11.1918.021.000	Bearing Kit Front 30/60 61803 Qty2
4	11.1918.021.001	Bearing Kit Rear 30/60 61903 Qty2
3	11.1918.183.000	ZIPP CeramicSpeed Bearing Kit - 61803 - ZIPP 30/60 88 Front Hub Shell, (bearings and one grease syringe)
4	11.1918.183.001	ZIPP CeramicSpeed Bearing Kit - 61903 - ZIPP 30/60 Rear Hub Shell
5	11.1918.022.000	Axle With End Cap Front 30/60 Black
6	11.1918.022.001	Axle With End Cap Rear 30/60 Black
7	11.1918.024.000	Freehub Body SRAM 30/60
8	11.1918.024.001	Freehub Body Campagnolo 30/60
9	11.1918.025.000	Freehub Body Seal and Spacer 30/60

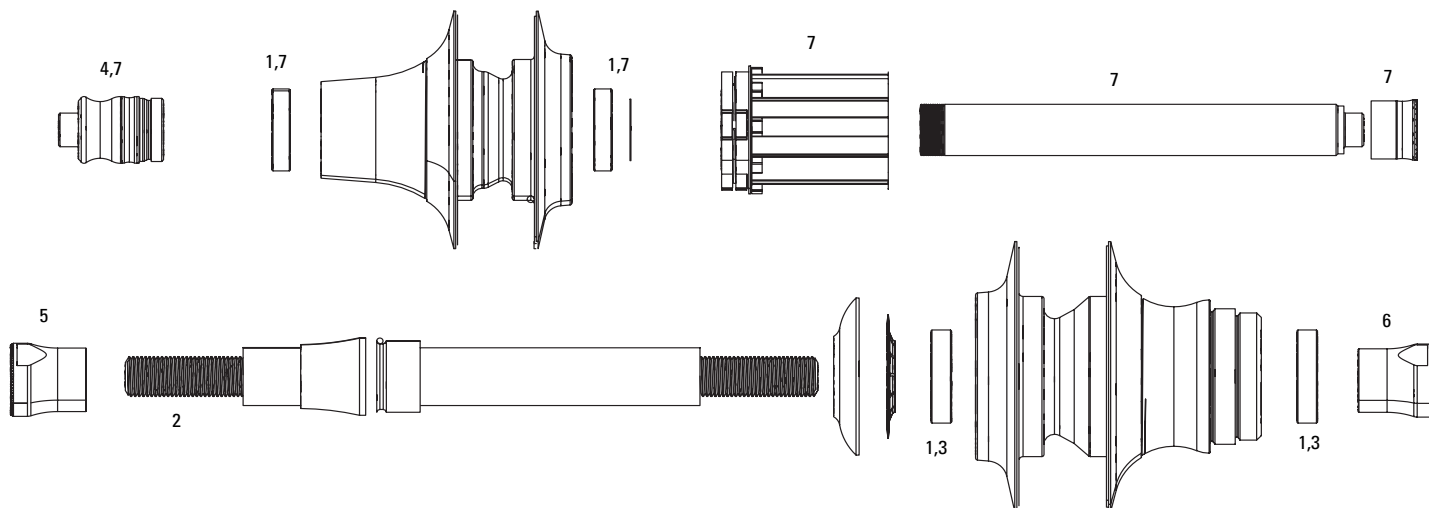




## No. Part Number Description

1	11.1915.049.000	Hub Bearings Front or Rear Zipp 82/182 Pair
1	11.1915.049.010	Hub Bearings Front or Rear Zipp 82/182 Pair Ceramic
ns	11.1915.051.000	Spacer Front 2006 Zipp 82 Hub
3	11.1915.052.000	Spring and Pawl Set for Zipp 182 Rear Hub Qty 5
4	11.1915.053.000	Retaining Ring for Carbon Cap Zipp 82/182 Hub
5	11.1915.054.000	Freehub Body Spacer Zipp 182 Rear
6	11.1915.055.000	Axle Rear 2006 Zipp 182 Hub
7	11.1915.056.000	Freehub Body SRAM/Shimano Zipp 182 Red
7	11.1915.056.010	Freehub Body Campagnolo Zipp 182 Blue
7	11.1915.056.020	Freehub Body SRAM/Shimano Zipp 182 Red Ceramic
7	11.1915.056.030	Freehub Body Campagnolo Zipp 182 Blue Ceramic
7	11.1915.062.000	Freehub Body SRAM/Shimano Zipp 282E
7	11.1915.062.010	Freehub Body Campagnolo Zipp 282E
8	11.2100.029.000	2006 182 SRAM Conversion Kit
8	11.2100.031.000	2006 182 Campagnolo Conversion Kit
ns	11.2100.027.000	2007 Track Axle Conversion kit





## No. Part Number Description

1	11.1915.064.000	Hub Bearings Front or Rear Pair Zipp Super 9
1	11.1915.064.010	Hub Bearings Front or Rear Pair Zipp Super 9 Ceramic
ns	00.1918.183.002	ZIPP CeramicSpeed Bearing Kit - 61803 x1, 61903 x1 - ZIPP Sub-9/Super-9 Hub Shell
ns	11.1915.066.000	Zipp Disc Spacer Wheelchair Anodized
ns	11.1915.066.010	Zipp Disc Axle Sleeve 99
ns	11.1915.066.020	Zipp Disc Axle Wheelchair
ns	11.1915.068.000	Zipp Disc Track Cap Kit Front Qty 2
ns	11.1915.068.010	Zipp Disc Track Locknut Rear Black
2	11.1915.072.000	Zipp Disc Track Axle Threaded Stud
ns	11.1915.073.000	Zipp Disc Track Drive Spacer
3	11.1915.074.000	Zipp Disc Bearing R6 Pair
3	11.1915.074.010	Zipp Disc Bearing R8 Wheelchair Hub Pair
4	11.1915.076.000	Zipp Disc Hub End Cap Non Drive 2006
5,6	11.1915.070.000	Zipp Disc Track Locknut and Spacer Black
ns	11.1915.075.000	Zipp Disc Hub Wave Spring
ns	11.1915.069.000	Zipp Disc Track Axle Nut M10
ns	11.1915.069.010	Zipp Disc Track Axle Nut M9
ns	11.2000.002.000	Front Track Caps and Screws (Front Disc Only)
ns	11.2015.034.000	High Flange Track Zipp Hub Axle Kit Front
ns	11.2018.019.000	INNER WASHER KNURL ZIPP TRACK 188V8 PAIR
ns	11.2018.020.000	OUTER WASHER KNURL ZIPP TRACK 188V8
ns	11.2018.021.000	HEX BOLT/OUTER WASHR ZIPP TRACK DISC 188
ns	11.2018.022.000	AXLE WASHER/ORING DISC 188 10S TO TRACK
ns	11.2018.023.000	LOCKRING TRACK SILVER
ns	11.2018.023.001	LOCKRING TRACK BLACK
ns	11.2018.018.000	HEX BOLT ZIPP TRACK DISC 188
ns	11.2015.034.010	High Flange Track Zipp Hub Axle Kit Rear
ns	11.2100.012.000	Rear Track Caps and Screws (Rear Wheel and Disc)
7	11.2100.029.000	2006 182 SRAM Conversion Kit
7	11.2100.031.000	2006 182 Campagnolo Conversion Kit
ns	11.2018.024.000	HUB BEARINGS REAR PAIR 188 V9
ns	11.2018.025.000	CLINCH NUT REAR 188 V9
ns	11.2100.030.000	'04 202 CAMPY CONVERSION KIT



**ZIPF**





Part Number	Description
11.1915.080.000	Spokes & Nipples & Titanium Washers 3-pack 222mm CX-Ray Straight-Pull Hexagonal Secure Lock Black Oxide
11.1915.080.010	Spokes & Nipples & Titanium Washers 3-pack 224mm CX-Ray Straight-Pull Hexagonal Secure Lock Black Oxide
11.1915.080.020	Spokes & Nipples & Titanium Washers 3-pack 226mm CX-Ray Straight-Pull Hexagonal Secure Lock Black Oxide
11.1915.080.030	Spokes & Nipples & Titanium Washers 3-pack 234mm CX-Ray Straight-Pull Hexagonal Secure Lock Black Oxide
11.1915.080.040	Spokes & Nipples & Titanium Washers 3-pack 244mm CX-Ray Straight-Pull Hexagonal Secure Lock Black Oxide
11.1915.080.050	Spokes & Nipples & Titanium Washers 3-pack 246mm CX-Ray Straight-Pull Hexagonal Secure Lock Black Oxide
11.1915.080.060	Spokes & Nipples & Titanium Washers 3-pack 248mm CX-Ray Straight-Pull Hexagonal Secure Lock Black Oxide
11.1915.080.070	Spokes & Nipples & Titanium Washers 3-pack 258mm CX-Ray Straight-Pull Hexagonal Secure Lock Black Oxide
11.1915.080.080	Spokes & Nipples & Titanium Washers 3-pack 260mm CX-Ray Straight-Pull Hexagonal Secure Lock Black Oxide
11.1915.080.090	Spokes & Nipples & Titanium Washers 3-pack 262mm CX-Ray Straight-Pull Hexagonal Secure Lock Black Oxide
11.1915.080.100	Spokes & Nipples & Titanium Washers 3-pack 272mm CX-Ray Straight-Pull Hexagonal Secure Lock Black Oxide
11.1915.080.120	Spokes & Nipples & Titanium Washers 3-pack 184mm CX-Ray Straight-Pull Hexagonal Secure Lock Black Oxide
11.1915.080.130	Spokes & Nipples & Titanium Washers 3-pack 198mm CX-Ray Straight-Pull Hexagonal Secure Lock Black Oxide
11.1915.080.140	Spokes & Nipples & Titanium Washers 3-pack 210mm CX-Ray Straight-Pull Hexagonal Secure Lock Black Oxide
11.1915.080.150	Spokes & Nipples & Titanium Washers 3-pack 270mm CX-Ray Straight-Pull Hexagonal Secure Lock Black Oxide
11.1915.080.160	Spokes & Nipples & Titanium Washers 3-pack 232mm CX-Ray Straight-Pull Hexagonal Secure Lock Black Oxide
11.1915.080.170	Spokes & Nipples & Titanium Washers 3-pack 236mm CX-Ray Straight-Pull Hexagonal Secure Lock Black Oxide
11.1915.080.180	Spokes & Nipples & Titanium Washers 3-pack 250mm CX-Ray Straight-Pull Hexagonal Secure Lock Black Oxide
11.1915.080.190	Spokes & Nipples & Titanium Washers 3-pack 274mm CX-Ray Straight-Pull Hexagonal Secure Lock Black Oxide
11.1915.080.280	Spokes & Nipples & Titanium Washers 3-pack 228mm CX-Ray Straight-Pull Hexagonal Secure Lock Black Oxide
11.1915.080.290	Spokes & Nipples & Titanium Washers 3-pack 230mm CX-Ray Straight-Pull Hexagonal Secure Lock Black Oxide
11.1915.080.300	Spokes & Nipples & Titanium Washers 3-pack 252mm CX-Ray Straight-Pull Hexagonal Secure Lock Black Oxide
11.1915.080.310	Spokes & Nipples & Titanium Washers 3-pack 266mm CX-Ray Straight-Pull Hexagonal Secure Lock Black Oxide
11.1915.080.320	Spokes & Nipples & Titanium Washers 3-pack 278mm CX-Ray Straight-Pull Hexagonal Secure Lock Black Oxide
11.1915.080.220	Spokes & Nipples & Titanium Washers 3-pack 208mm CX-Ray Straight-Pull Hexagonal Secure Lock Black Oxide
11.1915.080.230	Spokes & Nipples & Titanium Washers 3-pack 220mm CX-Ray Straight-Pull Hexagonal Secure Lock Black Oxide
11.1915.080.240	Spokes & Nipples & Titanium Washers 3-pack 256mm CX-Ray Straight-Pull Hexagonal Secure Lock Black Oxide
11.1915.080.250	Spokes & Nipples & Titanium Washers 3-pack 264mm CX-Ray Straight-Pull Hexagonal Secure Lock Black Oxide
11.1915.026.000	External Locking Nipples 20-pack for 101 Wheels 2.0 x 14
11.1915.026.010	External Nipples Silver 50-pack for all Zipp Wheels Except 101 2.0 x 14
11.1915.026.020	Nipple Washers Oval 50-pack for Firecrest Wheels
11.1915.026.030	Internal for SRAM S40 S60 S80 & Flashpoint Wheels
11.1915.026.040	External Locking Nipples Black 20-pack for 101 Wheels 2.0 x14
11.1915.026.050	External Nipples Black 50-pack for all Zipp Wheels Except 101 2.0 x 14
11.1915.026.060	Nipple Washers Round Titanium 25-pack for 202 Carbon Clincher Firecrest Wheels
11.1915.026.070	External Hexagonal Secure Lock Nipples Black 20-pack for 30/60 101/202CC Wheels 2.0 x 14
11.1915.026.080	Spoke Retention Plugs For 303 Disc Brake Hub 15 Pieces
11.1915.077.000	Zipp T-Handle with 55mm and 150mm Nipple Drivers



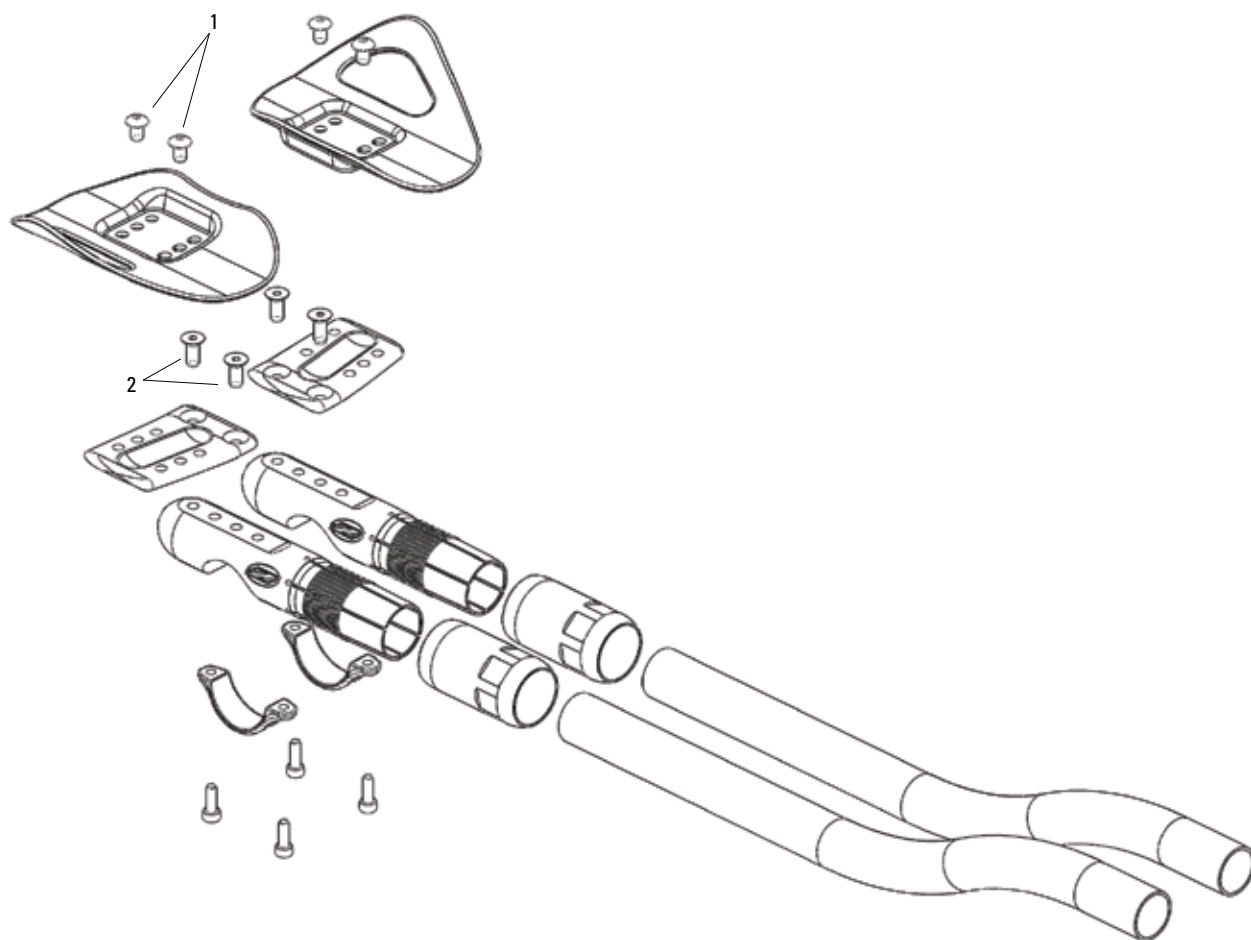



---

**Part Number    Description**

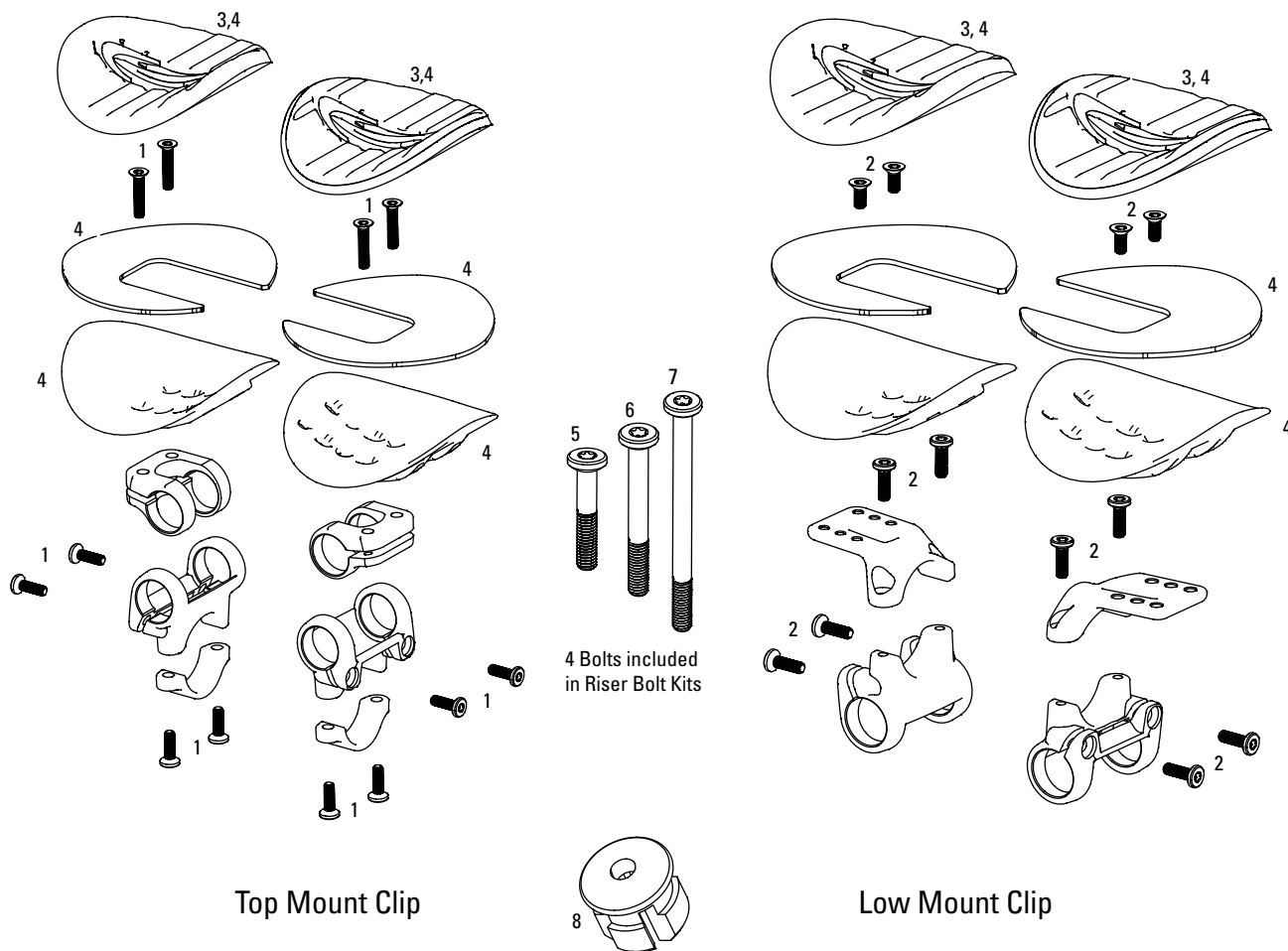
11.1915.025.000	Valve Cover Patches Z-logo 5 pieces
11.1918.015.000	Decal Set 202 Matte Black/No Border Zipp Logo Complete for One Wheel
11.1918.015.001	Decal Set 303 Matte Black/No Border Zipp Logo Complete for One Wheel
11.1918.015.002	Decal Set 404 Matte Black/No Border Zipp Logo Complete for One Wheel
11.1918.015.003	Decal Set 808 Matte Black/No Border Zipp Logo Complete for One Wheel or Disc
11.1918.015.004	Decal Set 404 650 Matte Black/No Border Zipp Logo Complete for One Wheel
11.1918.030.000	Decal Set 202 Matte White/No Border Zipp Logo Complete for One Wheel
11.1918.030.001	Decal Set 303 Matte White/No Border Zipp Logo Complete for One Wheel
11.1918.030.002	Decal Set 404 Matte White/No Border Zipp Logo Complete for One Wheel
11.1918.030.003	Decal Set 808 Matte White/No Border Zipp Logo Complete for One Wheel or Disc
11.1918.030.004	Decal Set 404 650 Matte White/No Border Zipp Logo Complete for One Wheel
11.1918.035.000	Decal Set 202 Matte Blue/No Border Zipp Logo Complete for One Wheel
11.1918.035.001	Decal Set 303 Matte Blue/No Border Zipp Logo Complete for One Wheel
11.1918.035.002	Decal Set 404 Matte Blue/No Border Zipp Logo Complete for One Wheel
11.1918.035.003	Decal Set Disc/808 Matte Blue/No Border Zipp Logo Complete for One Wheel
11.1918.035.004	Decal Set 404 650 Matte Blue/No Border Zipp Logo Complete for One Wheel Or Disc
11.1918.036.000	Decal Set 202 Matte Red/No Border Zipp Logo Complete for OneWheel
11.1918.036.001	Decal Set 303 Matte Red/No Border Zipp Logo Complete for OneWheel
11.1918.036.002	Decal Set 404 Matte Red/No Border Zipp Logo Complete for OneWheel
11.1918.036.003	Decal Set Disc/808 Matte Red/No Border Zipp Logo Complete for One Wheel
11.1918.036.004	Decal Set 404 650 Matte Red/No Border Zipp Logo Complete forOne Wheel Or Disc
11.1918.037.000	Decal Set 202 Matte Pink/No Border Zipp Logo Complete for One Wheel
11.1918.037.001	Decal Set 303 Matte Pink/No Border Zipp Logo Complete for One Wheel
11.1918.037.002	Decal Set 404 Matte Pink/No Border Zipp Logo Complete for One Wheel
11.1918.037.003	Decal Set Disc/808 Matte Pink/No Border Zipp Logo Complete for One Wheel
11.1918.037.004	Decal Set 404 650 Matte Pink/No Border Zipp Logo Complete for One Wheel Or Disc
11.1918.038.000	Decal Set 202 Matte Green/No Border Zipp Logo Complete for One Wheel
11.1918.038.001	Decal Set 303 Matte Green/No Border Zipp Logo Complete for One Wheel
11.1918.038.002	Decal Set 404 Matte Green/No Border Zipp Logo Complete for One Wheel
11.1918.038.003	Decal Set Disc/808 Matte Green/No Border Zipp Logo Completefor One Wheel
11.1918.038.004	Decal Set 404 650 Matte Green/No Border Zipp Logo Complete for One Wheel Or Disc




**No. Part Number Description**

ns	11.6615.002.010	Zipp Vuka Aero Collet
1	11.6615.003.020	Zipp Vuka Clip Pad Wing Screw Kit
2	11.6615.003.010	Zipp Vuka Clip wing Screw Kit
ns	11.6615.006.020	Zipp Aerobar Brake Lever with Spring
ns	11.6615.007.000	Zipp Vuka Clip Shim 31.8 to 26.0
ns	11.6615.008.000	Zipp Aerobar Cable Guide Stop
ns	11.6615.009.000	Zipp Handlebar Extension Plugs
ns	11.6615.010.000	Draw Bolt and Washer Zipp Vuka Aero
ns	80.1900.010.000	Handlebar End Pugs Zipp Carbon
ns	80.1900.011.000	Vuka Grip Tape for VukaAero
ns	80.1900.013.000	Vuka Elbow Pads for VukaAero & VukaClip
ns	11.6618.013.000	Vuka Elbow Pad Wing Extensions for Vuka Aero & Vuka Clip Left/Right
ns	11.6600.024.010	Vuka Shift 4mm Ferrules Qty 2
ns	11.6600.025.010	Vuka Shift 5mm Ferrules Qty 2

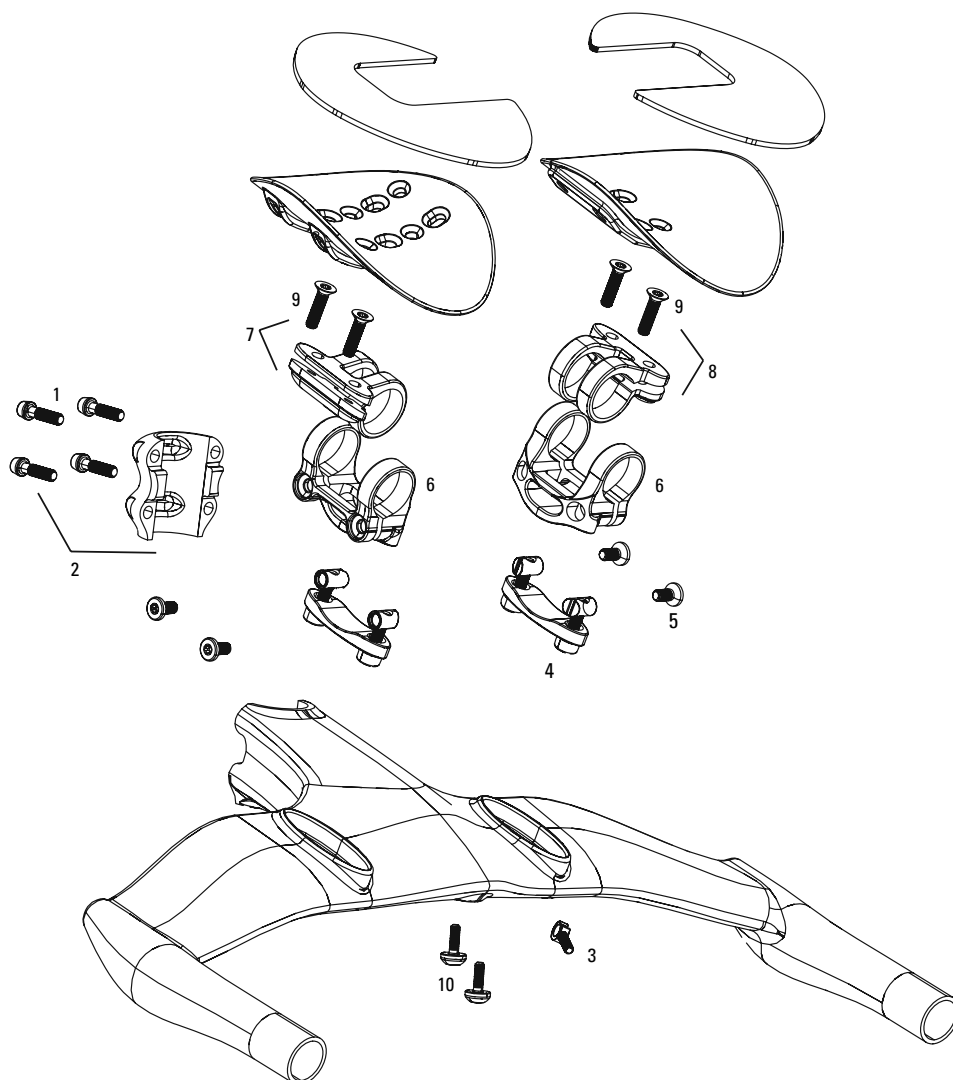




## No. Part Number Description

1	11.6618.000.000	Vuka Alumina Clip Bolt Kit Top Mount 1 Side
2	11.6618.000.001	Vuka Alumina Clip Bolt Kit Low Mount 1 Side
3	11.6618.001.000	Vuka Alumina Clip Armrest Pad Kit
4	11.6618.001.001	Vuka Alumina Armrest Kit
5	11.6618.002.000	Vuka Alumina Riser Bolt Kit for 10mm
6	11.6618.002.001	Vuka Alumina Riser Bolt Kit for 25mm
7	11.6618.002.002	Vuka Alumina Riser Bolt Kit for 50mm
8	11.6618.003.000	Vuka Alumina/Carbon Extensions End Plugs
ns	11.6618.012.000	Zipp Carbon Assembly Paste 5ml

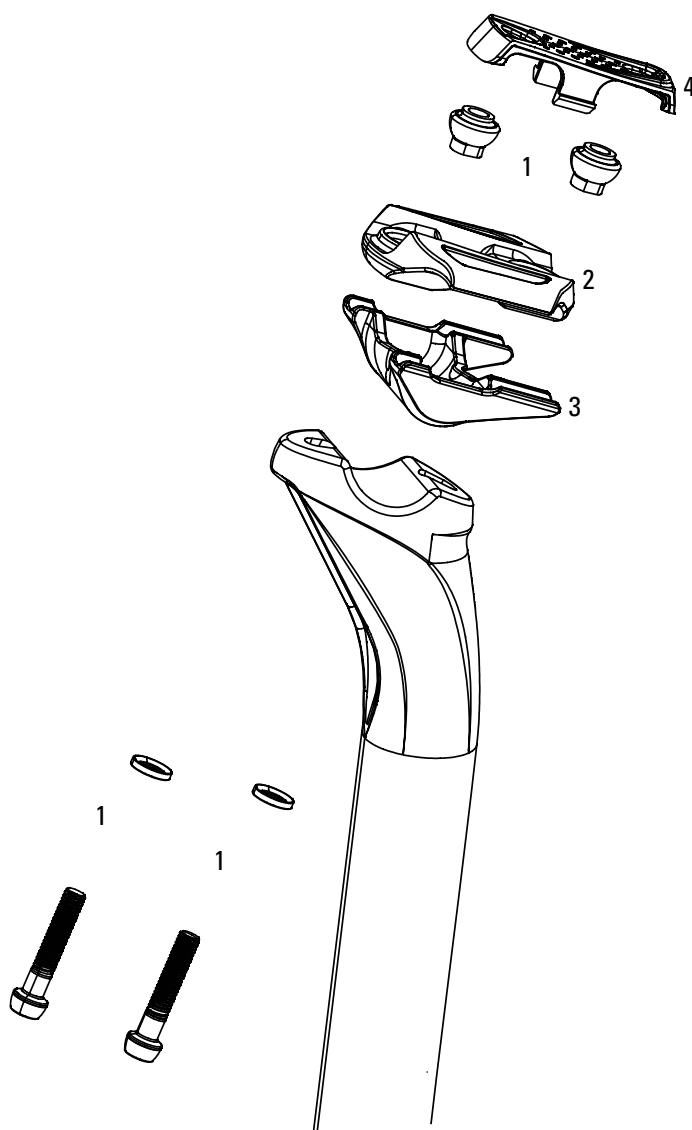




No.	Part Number	Description
-----	-------------	-------------

1	11.6618.004.000	Vuka Stealth Bolts for Stem with No Spacer T25 Ti 15mm Bolts
ns	11.6618.004.001	Vuka Stealth Bolts for Stem with Spacer T25 Ti 30mm Bolts
2	11.6618.004.002	Vuka Stealth Stem Clamp with T25 Ti 15mm Bolts
ns	11.6618.004.003	Vuka Stealth Stem Length Spacer
3	11.6618.005.000	Vuka Stealth Threaded Cable Guide Qty2
ns	11.6618.006.000	Vuka Stealth 10mm Risers with 40mm Bolts
ns	11.6618.006.001	Vuka Stealth 25mm Risers with 25mm Bolts
ns	11.6618.006.002	Vuka Stealth 50mm Risers with 50mm Bolts
ns	11.6618.007.000	Vuka Stealth 10mm Riser Bolt Kit 40mm
ns	11.6618.007.001	Vuka Stealth 25mm Riser Bolt Kit 25mm
ns	11.6618.007.002	Vuka Stealth 50mm Riser Bolt Kit 50mm
4	11.6618.008.000	Vuka Stealth Extension Tower Bolt Kit 31mm/12mm
5	11.6618.008.001	Vuka Stealth Extension Clamp Bolt Kit 10mm
6	11.6618.008.002	Vuka Stealth Extension Tower (1 Side Only)
7	11.6618.009.000	Vuka Stealth Armrest Clamp Right with Bolts 20mm
8	11.6618.009.001	Vuka Stealth Armrest Clamp Left with Bolts 20mm
9	11.6618.009.002	Vuka Stealth Armrest Clamp Bolt Kit 20mm
ns	11.6618.010.000	Vuka Stealth Computer Mount 1/4 Turn with T25 16mm Ti Bolts
10	11.6618.010.001	Vuka Stealth Computer Mount T25 16mm Ti Bolts Qty3
ns	11.6618.011.000	Vuka Stealth T25 2-sided Wrench
ns	11.6618.012.000	Zipp Carbon Assembly Paste 5ml

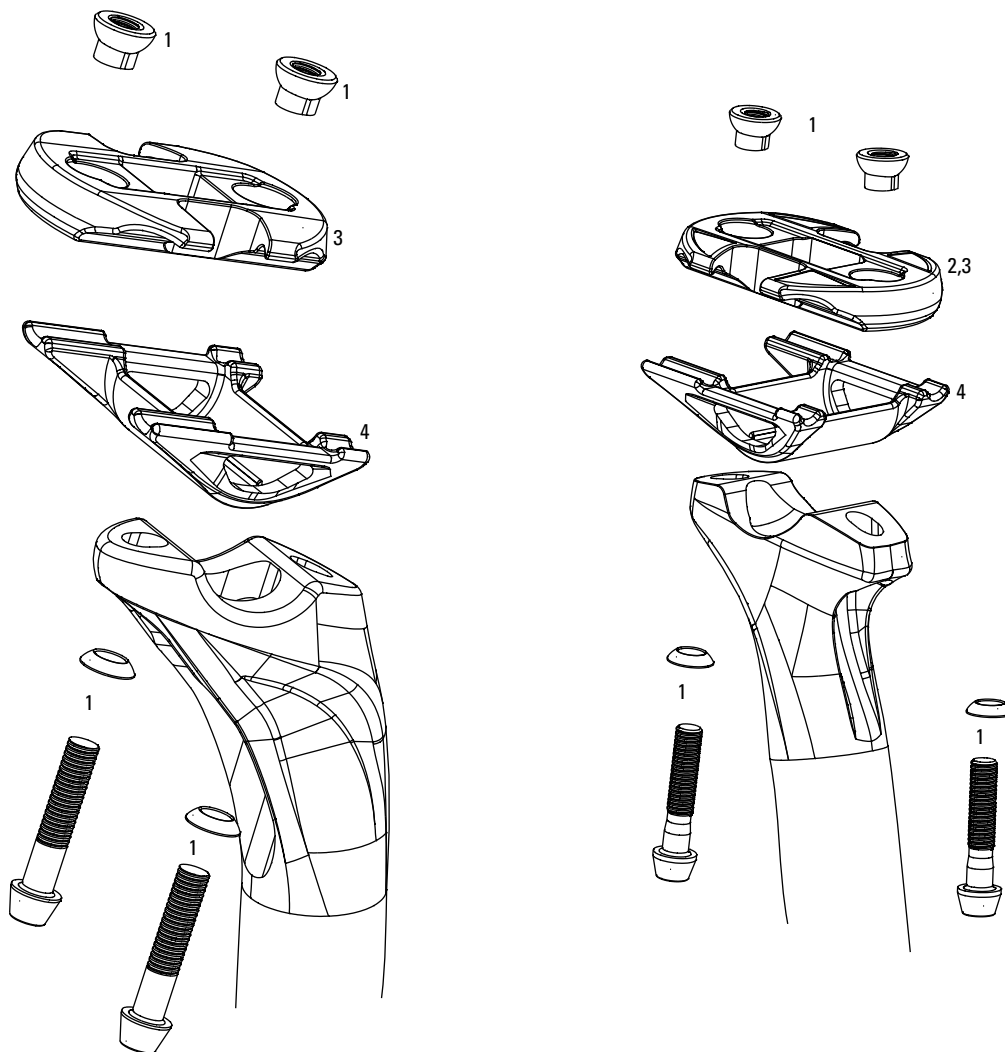




No.	Part Number	Description
-----	-------------	-------------

1	11.6818.009.000	Seatpost SL Speed Bolts, Nuts, Washers Kit
2	11.6818.010.000	Seatpost SL Speed Top Clamp
3	11.6818.011.000	Seatpost SL Speed Bottom Clamp
4	11.6818.012.000	SP SL Speed Top Cap White
4	11.6818.012.001	SP SL Speed Top Cap Red

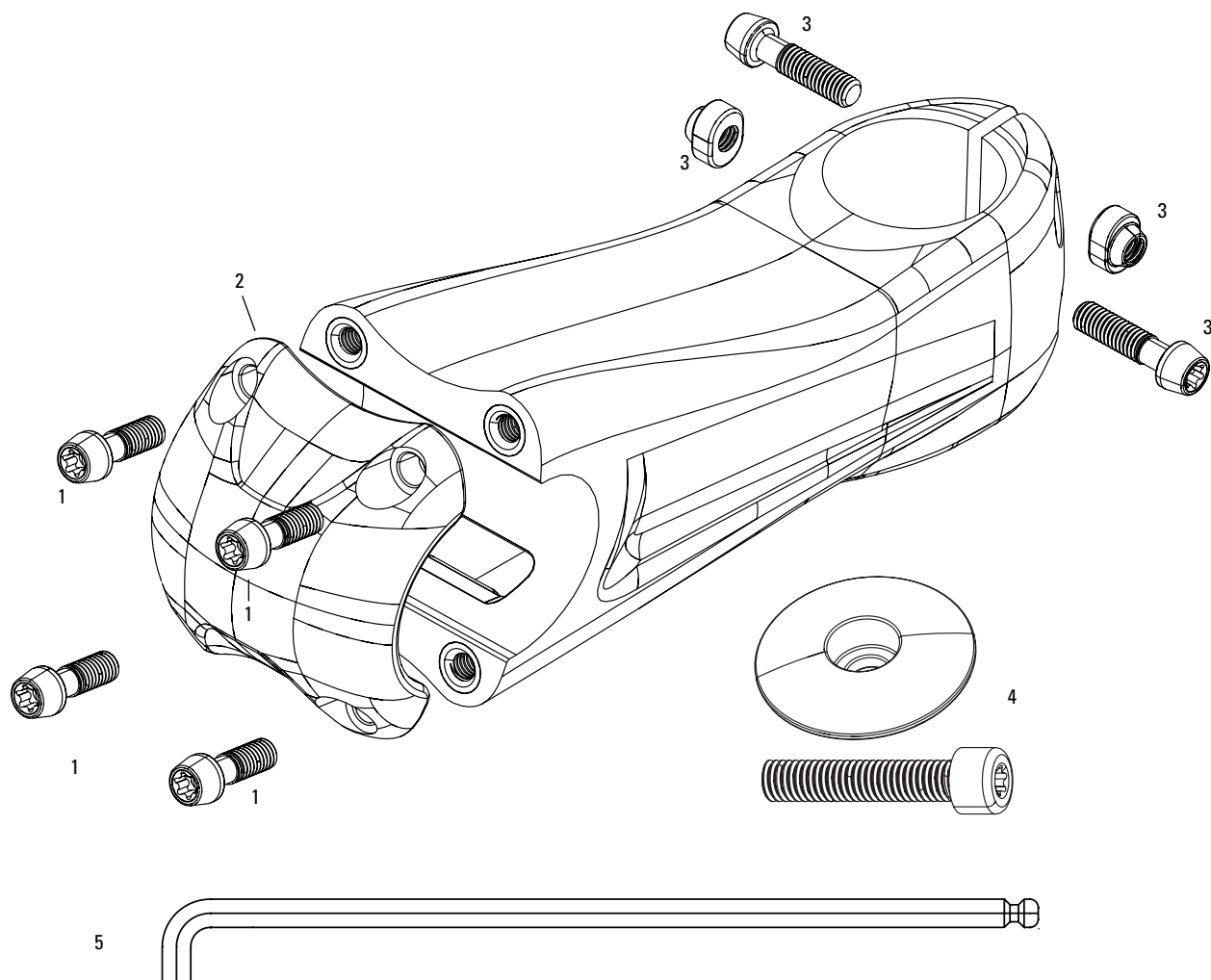




No.	Part Number	Description
-----	-------------	-------------

1	11.6815.034.000	Seatpost Service Course SL Bolt Kit Ti
1	11.6815.034.001	Seatpost Service Course SL Bolt Kit Ti Beyond Black
1	11.6815.035.000	Seatpost Service Course Bolt Kit Blast Steel Silver
2	11.6815.036.001	Seatpost Service Course SL Top Clamp Zero Offset Shiny Black
3	11.6815.037.000	Seatpost Service Course Top Clamp Blast Black
3	11.6815.037.001	Seatpost Service Course Top Clamp Zero Offset Blast Black
4	11.6815.038.000	Seatpost Service Course SL Bottom Clamp Shiny Black
4	11.6815.039.000	Seatpost Service Course Bottom Clamp Blast Black

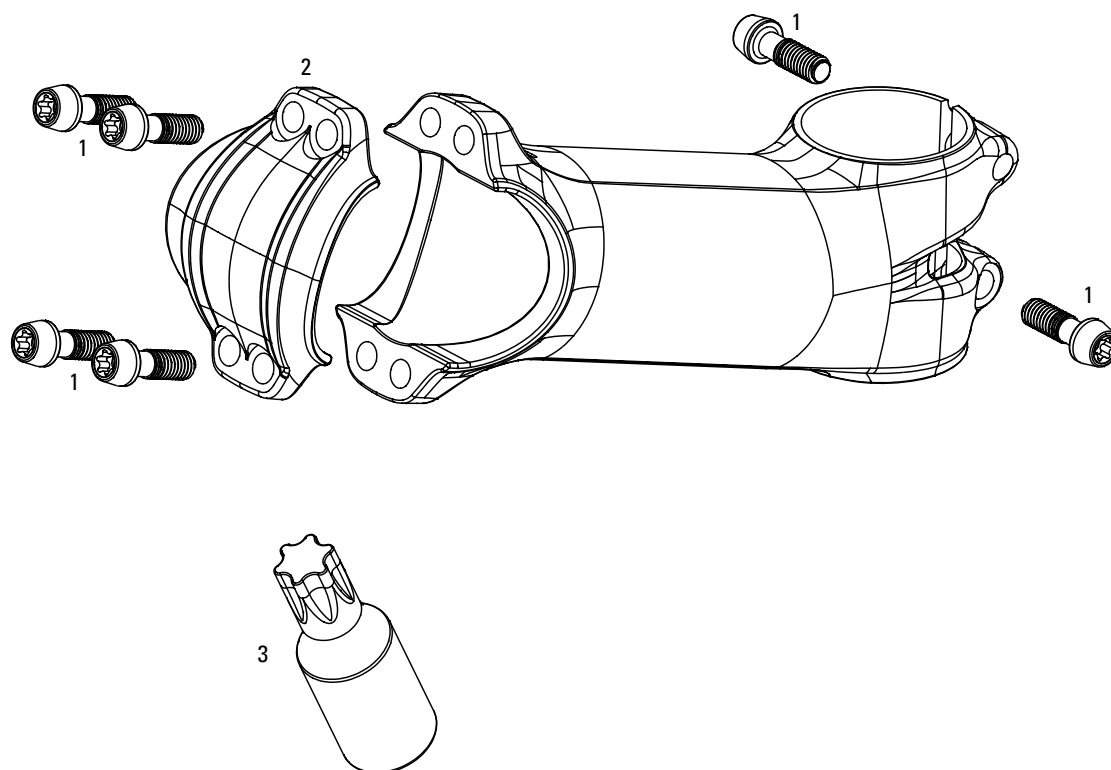




No.	Part Number	Description
-----	-------------	-------------

1	11.6518.003.000	Stem SL Sprint Bolt Kit Faceplate
2	11.6518.005.000	Stem SL Sprint Faceplate
3	11.6518.004.000	Stem SL Sprint Bolt Kit Steerer clamp
4	11.6518.006.000	Stem SL Sprint Top Cap and Bolt
ns	11.6515.009.000	Stem Speed SL Bolt Kit Ti
ns	11.6515.010.000	Stem Speed SL Face Plate Black
5	11.6518.001.000	Stem SL Speed 4mm Small Bend Wrench
ns	11.6518.002.000	Zipp Aluminum Top Cap with T25 Bolt

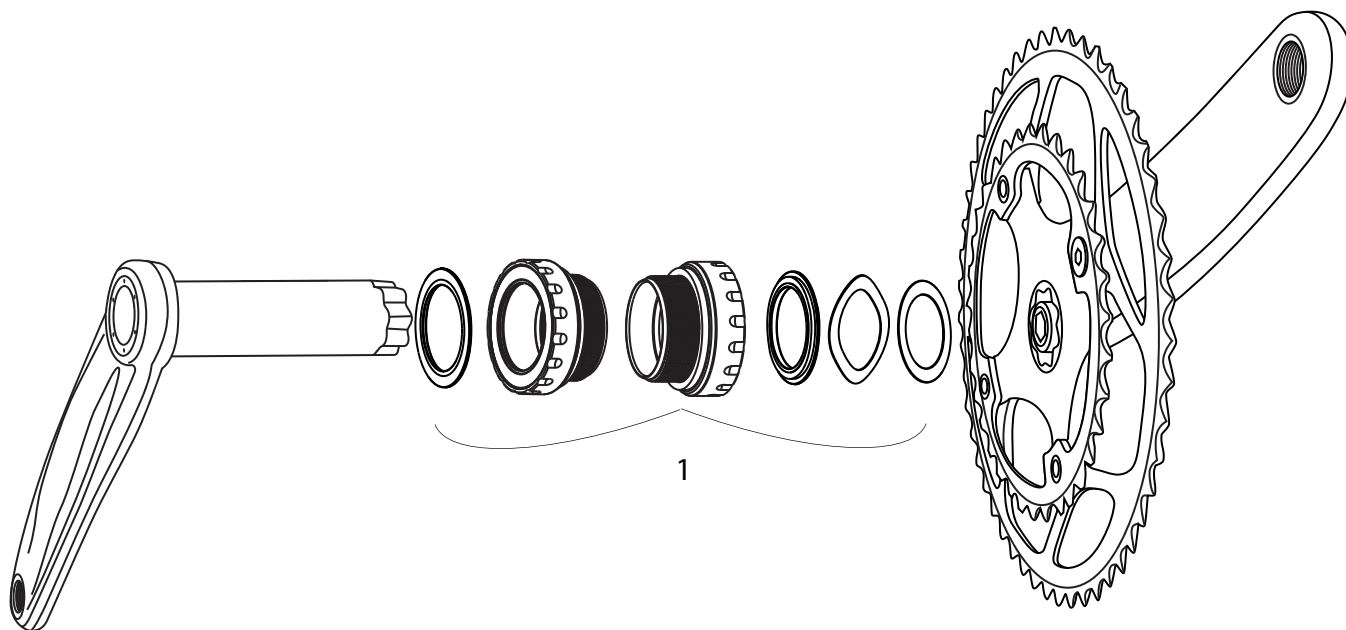




No.	Part Number	Description
-----	-------------	-------------

1	11.6515.005.000	Stem Service Course SL Bolt Kit Ti Silver
1	11.6515.005.001	Stem Service Course SL Bolt Kit Ti Beyond Black
1	11.6515.006.000	Stem Service Course Bolt Kit Steel Silver
2	11.6515.007.000	Stem Service Course SL Face Plate/Seatpostacer Shiny Black
2	11.6515.008.000	Stem Service Course Face Plate Black
3	11.6518.000.000	Zipp T25 Torx Tool, 4mm Socket





No.	Part Number	Description
-----	-------------	-------------

1	11.6400.020.000	Vuma Quad Bottom Bracket - 68mm - Standard Bearings
1	11.6400.021.000	Vuma Quad Bottom Bracket - 68mm - Ceramic Bearings
1	11.6400.022.000	Vuma Quad Bottom Bracket - 70mm - Standard Bearings
1	11.6400.023.000	Vuma Quad Bottom Bracket - 70mm - Ceramic Bearings
ns	11.6400.027.000	VUMA BB30 Ceramic Spacer Kit
ns	14.6100.001.000	Zipp Bottom Bracket Wrench



#### **COPYRIGHT**

This publication includes trademarks and registered trademarks of SRAM LLC designated by the symbols ™ and ®, respectively.

Copyright © 2014 SRAM LLC

#### **WORLD HEADQUARTERS**

SRAM LLC

1333 N. Kingsbury, 4th Floor

Chicago, Illinois 60642

United States of America

Phone: +1-312-664-8800

Fax: +1-312-664-8826

E-mail: [sramusa@sram.com](mailto:sramusa@sram.com)

#### **ASIAN HEADQUARTERS**

SRAM Taiwan

No. 1598-8 Chung Shan Road

Shen Kang Hsiang, Taichung

County 429 Taiwan R.O.C.

Phone: +886-4-2561-3678

Fax: +886-4-2561-3686

E-mail: [sramasia@sram.com](mailto:sramasia@sram.com)

#### **EUROPEAN HEADQUARTERS**

SRAM Europe

Paasbosweg 14-16

3862ZS Nijkerk

The Netherlands

Phone: +31-33-450-6060

Fax: +31-33-457-0200

E-mail: [srameurope@sram.com](mailto:srameurope@sram.com)



**[www.sram.com](http://www.sram.com)**

**world headquarters**

SRAM corporation  
1333 n. kingsbury st., 4th fl  
chicago, il 60622  
phone +1-312-664-8800  
fax +1-312-664-8826

**european headquarters**

SRAM europe  
basicweg 12-d  
3821 br amersfoort  
the netherlands  
phone +31-33-450-6060  
fax +31-33-457-0200

**asian headquarters**

SRAM taiwan  
no. 1598-8 chung shan rd  
shen kang hsiang, taichung  
county road 49 taiwan r.o.c.  
phone +886-4-2564-3678  
fax +886-4-2561-3686