

2107

ZIPP®

(english) **spare parts catalog**

SRAM® ORIGINAL PARTS

CAUTION:

The SRAM Warranty policy does not cover damages caused by the use of non-SRAM parts.

Use only SRAM parts with SRAM components.

Installation of parts and accessories not originally intended could result in less than optimal performance and/or injury.

For in-depth service information on SRAM products, refer to our website at www.sram.com/service. Contact your local SRAM distributor or dealer for ordering information.

Information contained in this publication is subject to change at any time without prior notice. Your product's appearance may vary from the diagrams contained in this catalog.

TABLE OF CONTENTS

ZIPP®-WHEELS



- 6, 7 Hub/Freehub Identification
- 8 Cognition NSW
- 9 88/188 V10
- 10 77/177 Rim
- 11, 12 77/177 Disc
- 13 77/177 End Caps
- 14, 15 88/188 V6, V7, V8, V9
- 16 30/60
- 17 82/182, 202/282
- 18 333 Track Hub
- 19 Super 9 Disc Brake
- 20 Super 9 Disc 10 / 11 Speed / Track
- 21, 22 Spokes/Nipples/Washers
- 23 Wheel/Disc Decal



ZIPP®-BARS/STEM/SEATPOST



- 24 VukaAero™ 22.0mm
- 25 Vuka Alumina Clip 22.2mm
- 26 Vuka Alumina Riser Kit and Bolts
- 27 Vuka Aero™
- 28 Vuka Stealth™
- 29 Vuka Stealth™ / Vuka Aero™ Riser Kits and Bolt Kits
- 30 SL Speed B1 Carbon Seatposts
- 31 SL Speed Carbon Seatposts
- 32 Service Course B1 Seatposts
- 33 Service Course Seatposts
- 34 SL Sprint Carbon Stem
- 35 SL Speed Carbon Stem
- 36 Service Course SL / SL-OS B1
- 37 Service Course A1



ZIPP®-CRANKS/BOTTOM BRACKETS

- 38 Vuma Cranks/Bottom Brackets

NOTES



ZIPP Cognition NSW Front and Rear Hubs

We introduced the Cognition hubset along with the 303, 404, and 808 NSW wheelsets. The rear wheel utilizes a star-flanged design for straight pull spokes. Inside the rear hub, the Axial Clutch mechanism utilizes metal injection molded ratchet rings and magnets in place of the typical pawl and spring system. Cognition hubs are compatible with SRAM, Campagnolo, and XDR driver bodies.

ZIPP 88/188 V10 Hubs

We introduced the 88/188 V10 hub along with the 404 Firestrike wheel set. This wheel came with ceramic bearings and has slotted spoke holes on machined flanges. This hub was made for rim brake only, not offered in a disc brake platform.

ZIPP 77/177 - Rim Brake Hubs

This hub was designed for rim brake use on the 30 Course, 202 Tubular, and 202, 303, 404, and 808 Firecrest Carbon Clinchers. The hub shell utilizes a star-flanged design for straight pull spokes.

ZIPP 77D/177D - Disc Hubs

This hub was designed for disc brake use on the 30 Course, 202 Firecrest, 303 Firecrest, 404 Firecrest, & 808 Firecrest. The 77D and 177D have machined hub flanges for straight pull spokes, and the axle end caps on the hub's axle are interchangeable with different wheel spacings and wheel attachment systems, including quick-release, 12x100, 15x100, & 9x100 RWS Thru Bolt for the front, and 12x135, 12x142, & 10x135 RWS Thru Bolt for the rear.

July 2013 - 88/188 Disc Brake Hub

We introduced the 303 Firecrest disc brake wheel set with new front and rear black Zipp disc brake hubs, 24/24 spokes 100mm front and 135mm rear spacing. Note the spoke angles for disc brake wheels are different (lower angles) than regular road brake wheels and the lacing pattern is 1x, 1x front and 2x,2x on the rear.

2014 ZIPP 88/188 V9 Hubs

A completely new design, these hubs have a 17mm axle, pawls with individual leaf springs, 32 teeth ratchet ring, slotted flanges, aero clinch nuts, internal seals and lateral play adjustment. Front end caps are smoke colored with blue/smoke or red rear end caps. Wheel lacing is reversed with 2x drive and radial non-drive spoke pattern. Free hubs are NOT inter-changeable and require a separate conversion kit that includes spacers, seal and matching end cap. Maintenance instructions are available including exploded diagrams. The rear end caps on Shimano hubs changed from smoke to red in November 2009.

In May 2010 the 88 front hub spoke retention ring and clinch nut were altered. The spoke retention ring was made thinner, clinch nut diameter enlarged and the boss shape changed.

2013 ZIPP V8 188 Hub for 11 Speed

In October 2012 a new rear hub version was released to accommodate Shimano 11 and Campagnolo 11 speed drive chains. The 188 V7 (2012 gray and black) rear hub was modified as follows:

1. Overall drop to drop length (OLD) is increased by 0.8mm
2. Axle internal diameter is reduced by 1.0mm (walls are thickened to increase axle strength) (left in image)
3. Non-drive side rear end cap is reduced by 1mm, 'O' ring removed and colored black (left in image)
4. New 11 speed free hub with laser etching, serial number and shim for 10 speed

The V8 88/188 hubs are only available in black, they build a rear wheel which is more durable and marginally stiffer at the same spoke tension. The axle, end cap and free hub are not compatible with the older hub versions (2009-2012). A conversion service is available for only for 2012 188 hubs (gray or black) from Zipp certified wheel builders. The conversion kit is not sold after-market.

November 2012 –

Revised V6 black rear axle with thicker wall and anodized treatment replaces original gray V6 axle. Note the revised axle uses the black end cap and not the red or blue.

October 2011 88/188 V7 Hubs

Re-design (V7) and improve the current 88/188 hubs with canted, rear, non-drive flange and rear axle changed to accommodate 7.5mm wider non-drive bearing location. Hub are offered in two color options - falcon gray and beyond black across the wheel line, (October 2011).

These changes improve rear 188 hub axle durability and allow 6% stiffer wheels to be built with the same spoke tension. On the 88 front hub, the only change is the color options – the silver and ZedTech hub 88/188 hub versions are discontinued.

Note: the rear 188 hub shell and axle are NOT compatible with the earlier silver version. The bearings (61803) end caps and seals remain unchanged.



Free hubs Zipp 188 hubs 2009 –

Major changes in pawl design and shape. Each pawl now has its own leaf spring. Pawl socket ring is scalloped, seal is black. These free hubs are NOT interchangeable with earlier 182 or 208 models and are only sold in a conversion kit with seals, shims and endcaps. Note the 61803 bearings to accommodate the larger 17mm axle.

July 2012 - Campagnolo 11 Electronic

To accommodate Campy11 electronic, we re-machined blue anodized Campagnolo free hubs to remove a small notch at the start of the splines. During July 2012 all available 182 and 188 free hubs were reworked. Going forward new blue Campy11 free hubs will be fully anodized with no silver markings.

2013 Zipp 188 V8 Free Hub for 11 Speed

1.85mm spacer needed to run 10 speed with 2013 V8 11 speed free hub

The 11 speed free hub is not compatible with the previous version (V7) of the 188 free hub. It is recognized by the yellow laser etching and is assigned an individual serial number. This free hub must be used with the 2013 black axle and non-drive side end-cap. To run 10 speed with this free hub, you will need the extra spacer (supplied with new wheels and conversions)

ZIPP 182 Rear and 82 Front Hubs (2006-2008)

These hubs are distinguished from the 202/84 model by brightly colored free hub bodies (Shimano red, Campagnolo blue), a plastic retaining ring behind the carbon hub caps, a reduction in weight (30g), redesigned pawl springs and an increase in the rear ear flange dimensions (52mm).

Free hubs Zipp 182 - 208 hubs 2005-2008

Machined and forged / Shimano red Campagnolo blue

The difference between machined and forged Shimano free hub bodies is a dull, deeper maroon, rougher surface finish and a scribed ring 1/3 towards the seal between the body and the red pawl carrier in the forged body. Since mid year 2005, Shimano free hubs are red and Campagnolo are blue. These bodies have 2 x 61082 bearings and a red seal between the pawl carrier and the main body.

ZIPP 202 Rear and 84 Front Hubs (2002-2005)

Al alloy silver polished hub bodies, most easily recognized by carbon weave protective end caps on both front and rear hubs. Available for either Shimano or Campagnolo, the bodies are interchangeable, but are not compatible with earlier models due to over-sized 15mm axle on the 202 rear and 84 front hubs.

There are 2 versions of the silver free hub body for this hub model. The 202W free hub has a solid silver ring on the free hub side adjoining the pawls, while the 202P has grooves that are machined all the way through with a slight 'lip' at the end of each spline. Status discontinued (2012), spare parts (e.g. axles and non-drive end caps) may not be available or will be very hard to find.

Free Hubs 202P and 202W models

This is where we find the largest confusion. 202P has the grooves extending all the way across the main body with a small lip on the splines. The 202W (Shimano) has a solid silver ring at the back between the pawl carrier and the main body, the grooves are blocked.

ZIPP 282 Rear and 102 Front Hubs (1999 to 2001)

The 102 front and 282 rear hubs are an ideal combination of performance, weight, durability, and value. Recognizable from other ZIPP hubs by their black anodized all aluminum hub construction; the 102 and 282 are available for both Shimano 8/9 speed and Campagnolo 9/10 speed systems. The 102 and 282 are the first ZIPP hubs to utilize butted or oval straight pull spokes. Free-hub bodies are interchangeable. Both front and rear hubs turn on the highest quality industrial cartridge bearings available. These bearings were used in a number of subsequent ZIPP wheel sets. If you need parts for the 2 pawl earlier 282 hub (often called the Swiss version), you must change axle, end caps and free-hub to upgrade to the 3 pawl (USA) model. Hub maintenance notes.

Status: discontinued, parts are difficult to find.

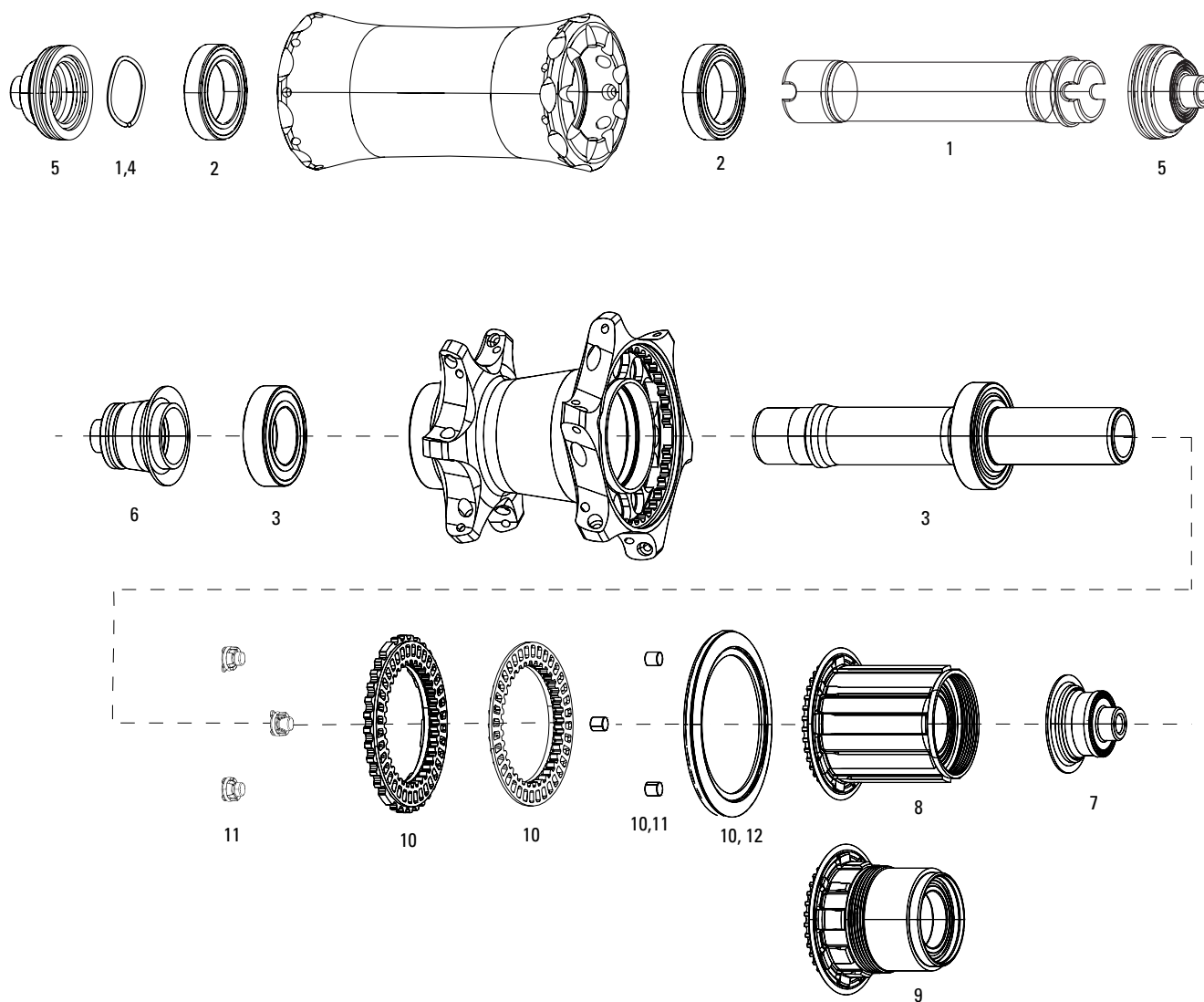
Note: early 282 hubs may be silver. When interchanging free hub bodies, check to see if the existing hub uses two or three pawls in the engagement mechanism and check bearing seal color.

In mid-2001 a 'USA' built version of the 282 was introduced. It is laser etched in the center of the hub flange with "USA" in silver on the black hub shell. Free-hub bodies are not inter-changeable between earlier 'swiss' versions and the usa version. Model 102 front: flange diameter = 23mm, center to flange = 39mm. Model 282 rear free hub: drive side flange = 51mm, non-drive flange = 33.5mm, center to drive side flange = 12mm, center to non-drive flange = 35mm. Maintenance notes.

Free hub bodies: 'USA' have blue bearing seals, 'Swiss' has black bearing seals - not inter-changeable.

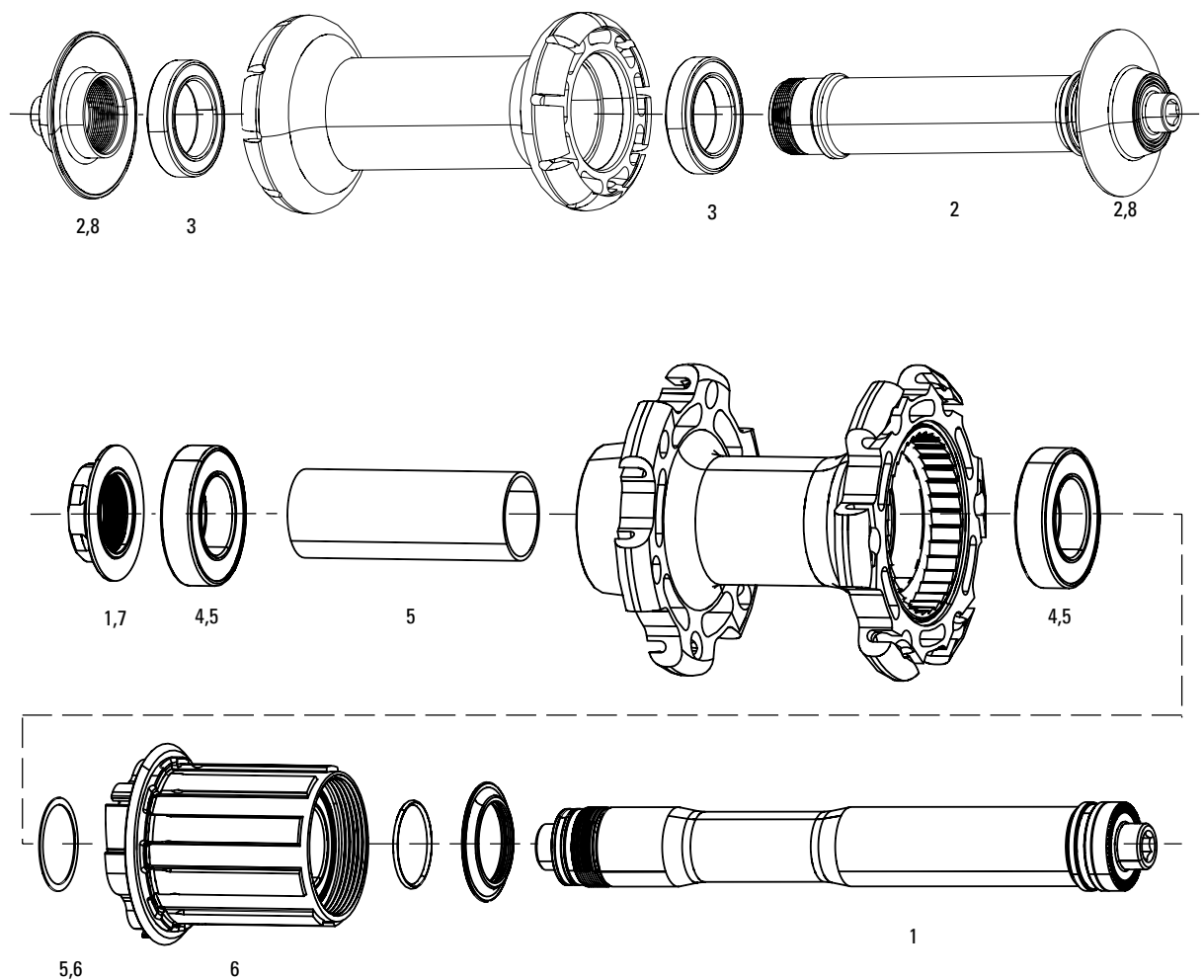
Free Hubs 282 models

Champagne color with a solid back ring between the splines and the pawl carrier.



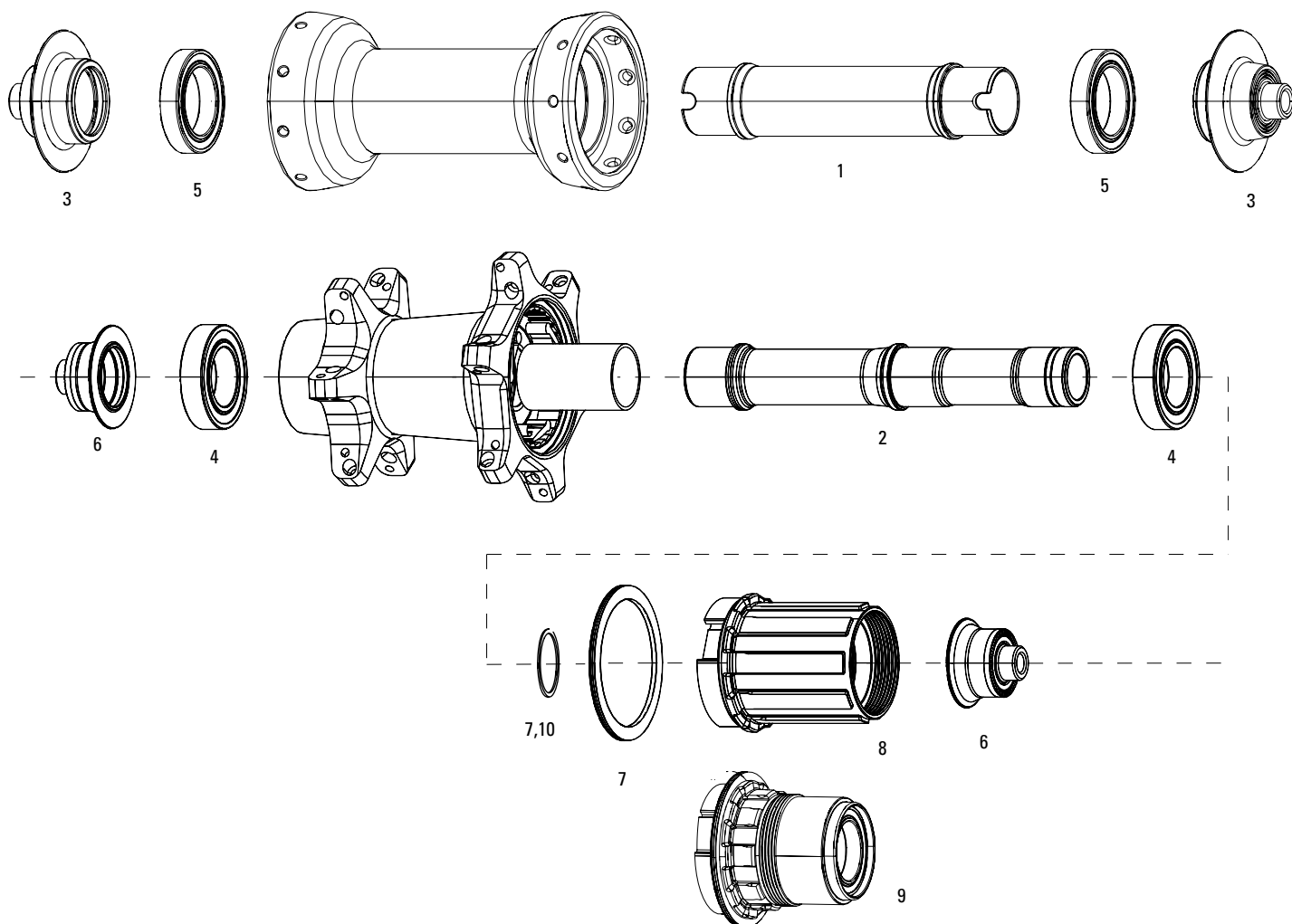
No. Part Number Description

1	11.2018.032.000	Axle Front Zipp Cognition NSW with Wave Spring
2	11.2018.032.001	Hub Bearings Front Zipp Cognition NSW Pair
3	11.2018.032.002	Axle Rear Zipp Cognition NSW with Bearings
4	11.2018.032.003	Wave Spring for Front Zipp Cognition NSW Axle
5	11.2018.033.000	Axle End Cap Assembly Front Zipp Cognition NSW Hub
6	11.2018.033.001	Axle End Cap Assembly Non Drive Rear Zipp Cognition NSW
7	11.2018.033.002	Axle End Cap Assembly Drive Side Rear Zipp Cognition NSW SRAM
7	11.2018.033.003	Axle End Cap Assembly Drive Side Rear Zipp Cognition NSW XD/Campagnolo
8	11.2018.034.000	Freehub Kit Cognition NSW 11-speed SRAM
8	11.2018.034.001	Freehub Kit Cognition NSW 11-speed Campagnolo
9	11.2018.034.002	Freehub Kit Cognition NSW 11-speed XD
10	11.2018.035.000	Clutch Assembly and Seal for Rear Zipp Cognition NSW
11	11.2018.035.001	Magnet Kit Inner and Outer for Rear Zipp Cognition NSW
12	11.2018.037.000	Seal Cap and O-Ring Rear Zipp Cognition NSW
ns	00.1918.177.050	Bearing Press Tool 6804, Zipp Cognition Rear Hub



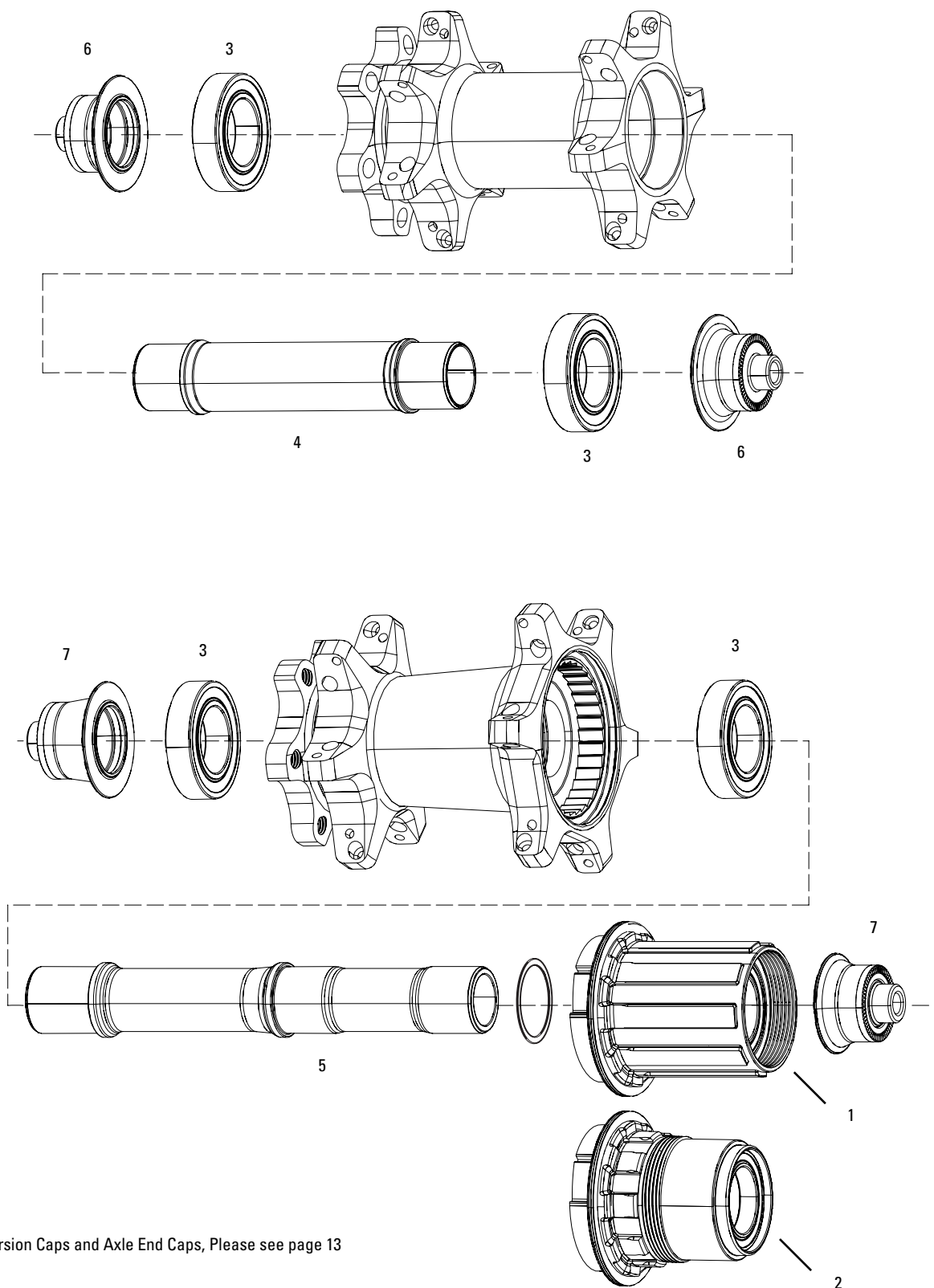
No.	Part Number	Description
-----	-------------	-------------

1	11.1918.041.000	Zipp Axle for 188 V10 Fire Strike 11 Speed Rear Hub with End Cap
2	11.1918.042.000	Zipp Axle for 88 V10 Fire Strike Front Hub with End Caps
3	11.1918.043.000	Hub Bearings Front Zipp 88 V10 Fire Strike Pair
4	11.1918.043.001	Hub Bearings Rear Zipp 188 V10 Fire Strike Pair
5	11.2018.030.000	Hub Bearing with Spacer Sleeve and .25mm Cassette Spacer 188V10R
6	11.1918.045.000	Freehub Kit 188 V10 Firestrike 11 speed SRAM
6	11.1918.045.001	Freehub Kit 188 V10 Firestrike 11 speed Campangolo
7	11.1918.056.000	End Cap Kit Axle Rear Zipp 188 V10 Fire Strike
8	11.1918.056.001	End Cap Kit Axle Front Zipp 88 V10 Fire Strike



No.	Part Number	Description
-----	-------------	-------------

1	11.1918.054.000	Axle Front Zipp 77 Rim Brake (Axle Only)
2	11.1918.054.001	Axle Rear Zipp 177 Rim Brake (Axle Only)
3	11.1918.047.001	Axle End Cap Zipp 77 Front Quick Release (SEE PAGE 13)
3	11.1918.047.002	Axle End Cap Zipp 77 Front Thru Axle 15x100 (SEE PAGE 13)
4	11.1918.050.001	Bearing Kit Front/Rear Zipp 77/177 Disc, Rear 177 Rim, 6903/61903 Qty 2
5	11.1918.050.000	Bearing Kit Front Zipp 77 Rim, 6803/61803 Qty 2
6	11.1918.048.001	Axle End Cap Rear Zipp 177 Rear 11 speed Quick Release (SEE PAGE 13)
7	11.1918.052.000	Freehub Body Seal and Shim Zipp 177 Qty1
ns	11.2018.036.000	Spring and Pawl Set for Zipp 177 Rear Hub Qty 4
8	11.1918.049.000	Freehub Kit Zipp 177 11 speed SRAM
ns	11.1918.049.001	Freehub Kit Zipp 177 11 speed Campagnolo
9	11.1918.049.002	Freehub Kit Zipp 177 11 speed SRAM XDR Driver Body
10	11.2018.038.000	Freehub Body Shim Zipp 177 Qty 1

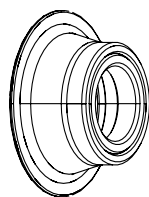
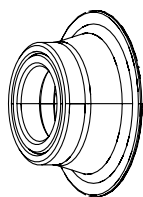


**No. Part Number Description**

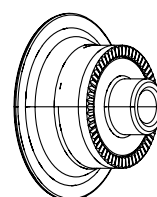
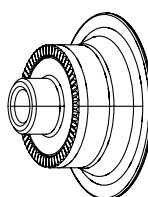
1	11.1918.049.000	Freehub Kit Zipp 177 11 speed SRAM
ns	11.1918.049.001	Freehub Kit Zipp 177 11 speed Campagnolo
2	11.1918.049.002	Freehub Kit Zipp 177 11 speed SRAM XDR
3	11.1918.050.001	Bearing Kit Front/Rear Zipp 77/177Disc 6903 Qty2
ns	11.1918.051.000	End Cap O-Ring Front/Rear 77/177Disc 17mm Qty3
ns	11.1918.052.000	Freehub Body Seal Zipp 177 Qty1
4	11.1918.053.000	Axle Front Zipp 77 Disc Brake (Axle Only)
5	11.1918.053.001	Axle Rear Zipp 177 Disc Brake (Axle Only)
ns	11.2018.036.000	Spring and Pawl Set for Zipp Rear Hub Qty 4

CONVERSION CAPS AND AXLE END CAPS (SEE PAGE 13)

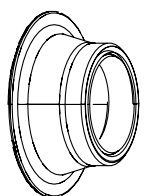
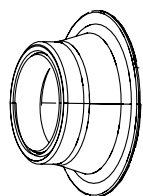
6	11.1918.046.000	Conversion Caps Wheel Zipp 77Disc Front 100/12mm Thru Axle
6	11.1918.046.001	Conversion Caps Wheel Zipp 77 Disc Front 100/15mm Thru Axle
6	11.1918.046.004	Conversion Caps Wheel Zipp 77Disc Front 100/9mm RWS Thru Bolt
6	11.1918.047.000	Axle End Cap Zipp 77Disc Front Quick Release
7	11.1918.046.002	Conversion Caps Zipp 177Disc Rear, 12x135 Thru Axle
7	11.1918.046.003	Conversion Caps Zipp 177Disc Rear, 12x142 Thru Axle
7	11.1918.046.005	Conversion Caps Wheel Zipp 177 Disc Rear 135/10mm RWS Bolt
7	11.1918.048.000	Axle End Cap Rear Zipp 177 Disc Brake Rear 11 speed Quick Release



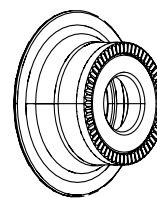
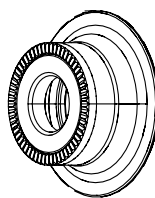
11.1918.046.000
Conversion Caps Wheel
Zipp 77Disc Front
100/12mm Thru Axle



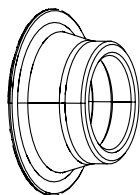
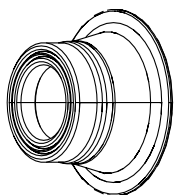
11.1918.047.000
Axle End Cap Zipp 77Disc
Front Quick Release



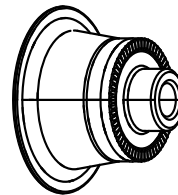
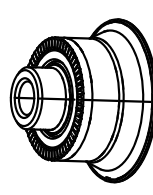
11.1918.046.001
Conversion Caps Wheel
Zipp 77Disc Front
100/15mm Thru Axle



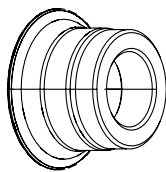
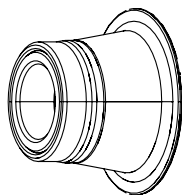
11.1918.046.004
Conversion Caps Wheel
Zipp 77Disc Front
100/9mm RWS Thru Bolt



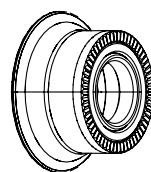
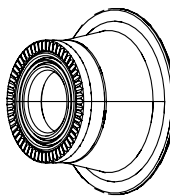
11.1918.046.002
Conversion Caps ZIPP
177DISC Rear, 12x135
QR



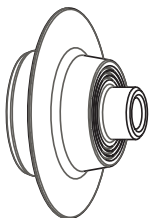
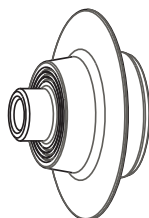
11.1918.048.000
Axle End Cap Rear Zipp
177Disc Rear 11 speed Quick
Release



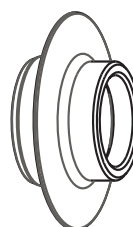
11.1918.046.003
Conversion Caps ZIPP 177DISC
Rear, 12x142 Through Axle



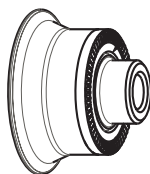
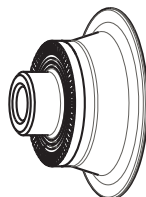
11.1918.046.005
Conversion Caps Wheel Zipp
177Disc Rear 135/10mm RWS
Thru Bolt



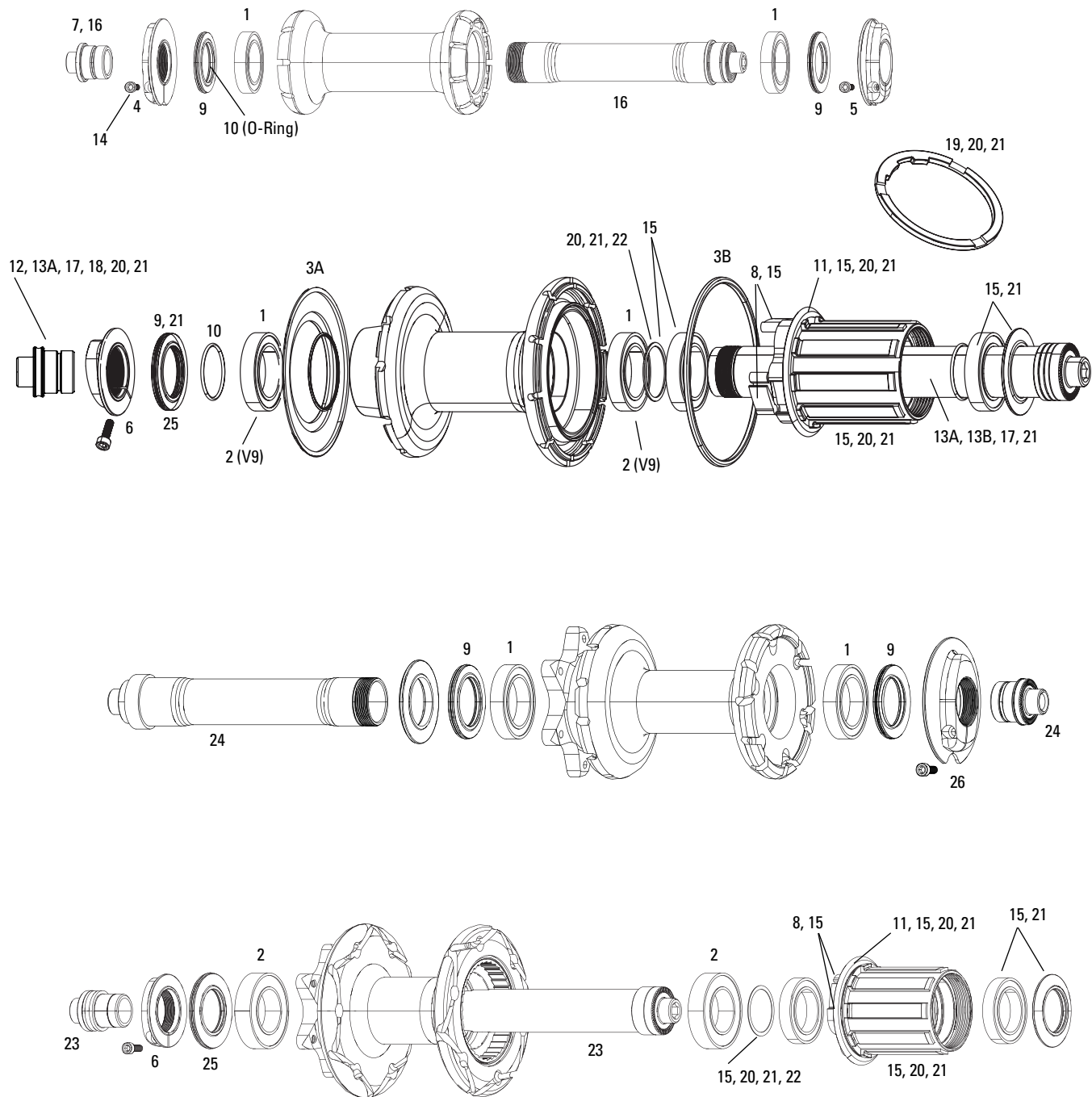
11.1918.047.001
Axle End Cap Zipp 77
Front Quick Release



11.1918.047.002
Axle End Cap Zipp 77
Front Thru Axle 15x100

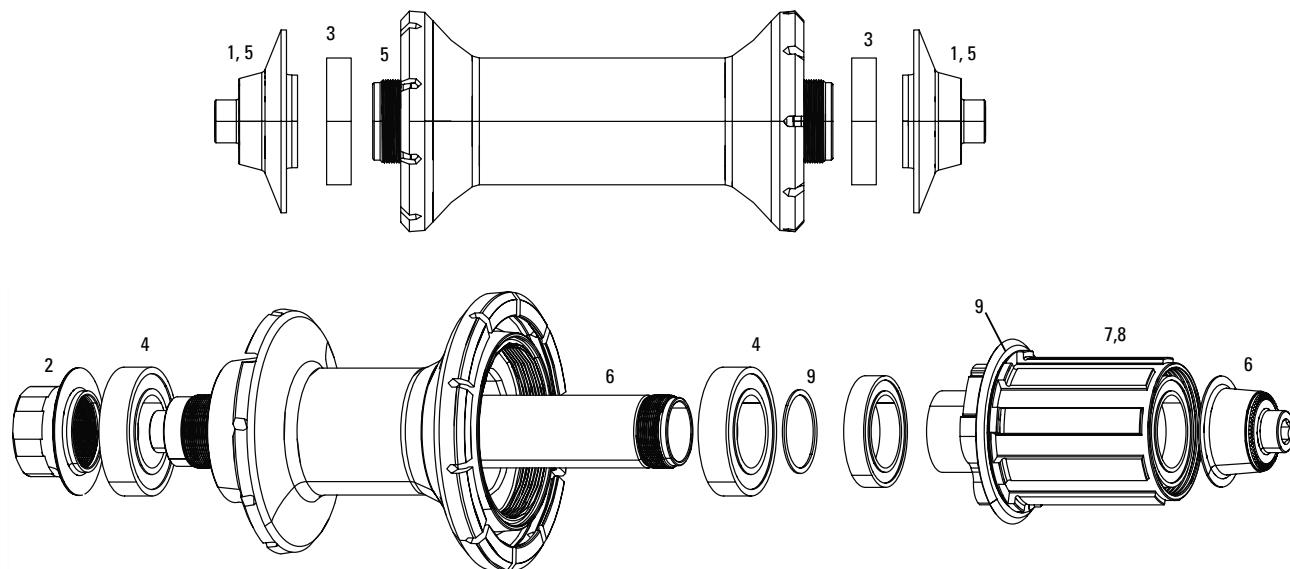


11.1918.048.001
Axle End Cap Rear Zipp
177 Rim Brake Rear
11-Speed Quick Release

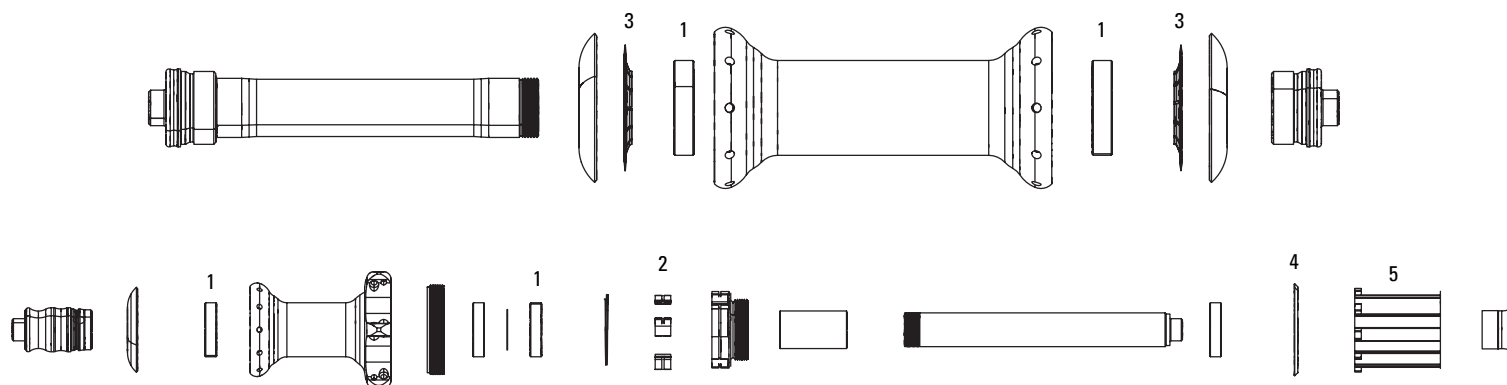




No.	Part Number	Description
1	11.1915.028.000	Hub Bearings Front or Rear Zipp 88/188 Pair
1	00.1918.183.000	ZIPP CeramicSpeed Bearing Kit - 61803 - ZIPP 30/60 88 FrontHub Shell, 188 Rear Hub Shell and 30/60/S9 Rear Free Hub Body (includes bearings and one grease syringe)
2	11.2018.024.000	Hub Bearings Rear Pair ZIPP 188 V9
2	00.1918.183.001	ZIPP CeramicSpeed Bearing Kit - 61903 x 2 - ZIPP 188v.9 (2014 and later), 30, 60 rear hub (includes grease syringe)
3A	11.1915.042.000	Reinforce Ring Non-Drive Smoke Zipp 188 Smoke
3A	11.2018.001.001	Reinforce Ring Non-Drive Side Black Rear 188v7
3B	11.1915.043.000	Reinforce Ring Radial Smoke Zipp 188 Smoke
3B	11.2018.001.002	Reinforce Ring Radial Side Black Rear 188v7
4	11.2018.043.000	Clinch Nut and Screw Threaded Black Front 88v9
5	11.2018.044.000	Clinch Nut and Screw Non-Threaded Black Front 88v9
6	11.2018.000.002	Clinch Nut and Screw Threaded Black Rear 188v7
7	11.1915.033.000	Axle End Cap Front Zipp 88 Hub
8	11.1915.035.000	Spring and Pawl Set for Zipp 188 Rear Hub Qty 4
9	11.1915.036.000	Bearing Shield Front or Rear Zipp 88/188 V8, Front Zipp 88 V9, Front Zipp 88 V9 Disc
10	11.1915.037.000	O-Ring Bearing Shield Front or Rear Zipp 88/188 Hub Qty 5
11	11.1915.040.000	Dust Cap Shield Freehub Zipp 188 Campagnolo
11	11.1915.040.010	Dust Cap Shield Freehub Zipp 188 SRAM/Shimano
12	11.1915.045.000	Axle End Cap Rear Zipp 188 SRAM/Shimano
12	11.1915.045.010	Axle End Cap Rear Zipp 188 Campagnolo
13A	11.2100.096.000	Axle Assembly Zipp 188 Silver Hub Rear SRAM/Shimano Freehub
13B	11.1915.086.000	Zipp Axle for 188 Black Rear Hub Black 14mm inner diameter, no End Cap (V7)
14	11.2015.036.000	Clinch Nut Set Screw Zipp 88/188 M25x8
15	11.2100.094.000	Freehub Conversion Kit 188 SRAM/Shimano
15	11.2100.094.010	Freehub Conversion Kit 188 Campy
16	11.1918.006.000	Front Axle with End Cap Zipp Black 88 Hub(Uses 11.1915.033.000 End Cap)
17	11.1918.010.000	Zipp Axle for 188 11 speed Rear Hub Black
18	11.1918.011.000	Axle End Cap Rear Zipp 188 11 speed SRAM
19	11.1918.008.000	Cassette Spacer 10 speed 188 SRAM Freehub 11 speed
20	11.1918.007.000	Freehub Kit 188 11 speed SRAM
ns	11.1918.007.001	Freehub Kit 188 11 speed Campagnolo
21	11.1918.009.000	Conversion Kit 10 Speed to 11 Speed 188 SRAM
22	11.1915.038.000	Freehub Body Spacer Zipp 188 Rear Qty 2
bulk	11.1915.039.000	O-Ring End Cap Front or Rear Zipp 88/188 Qty 5
23	11.1918.019.000	Axle Rear Zipp 188 Disc Brake With End Cap
24	11.1918.019.001	Axle Front Zipp 88 Disc Brake With End Cap
25	11.2018.015.000	Bearing Shield Rear Zipp 188 V9 Rim, Rear Zipp 188 V9 Disc
26	11.2018.016.000	Clinch Nut and Screw Threaded Black Front 88 Disc Brake

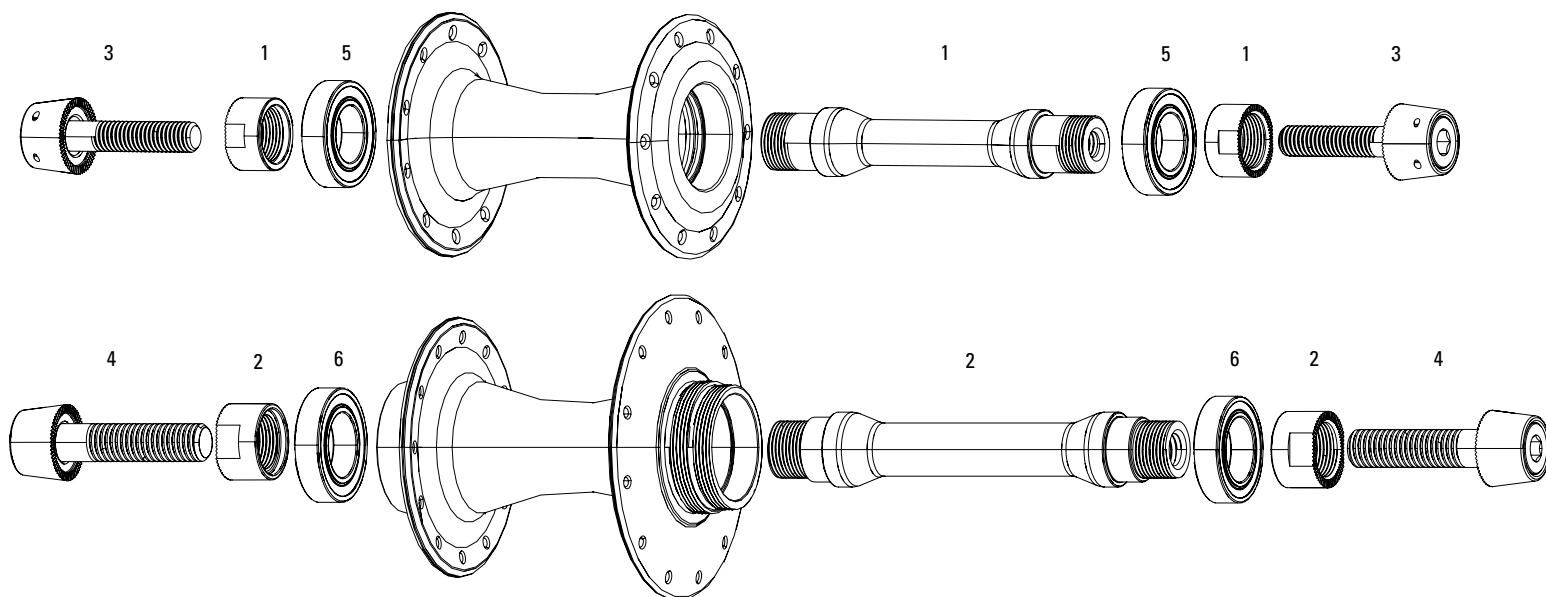

No. Part Number Description

1	11.1918.020.000	End Cap Front 30/60 Black
2	11.1918.020.001	End Cap Assembly Non Drive Rear 30/60 Black
3	11.1918.021.000	Bearing Kit Front 30/60 61803 Qty2
3	00.1918.183.000	ZIPP CeramicSpeed Bearing Kit - 61803 - ZIPP 30/60 88 FrontHub Shell, 188 Rear Hub Shell and 30/60/S9 Rear Free Hub Body (includes bearings and one grease syringe)
4	11.1918.021.001	Bearing Kit Rear 30/60 61903 Qty2
4	00.1918.183.001	ZIPP CeramicSpeed Bearing Kit - 61903 - ZIPP 30/60 Rear HubShell (includes bearings and one grease syringe)
5	11.1918.022.000	Axle With End Cap Front 30/60 Black
6	11.1918.022.001	Axle With End Cap Rear 30/60 Black
7	11.1918.024.000	Freehub Body SRAM 30/60
8	11.1918.024.001	Freehub Body Campagnolo 30/60
9	11.1918.025.000	Freehub Body Seal and Spacer 30/60



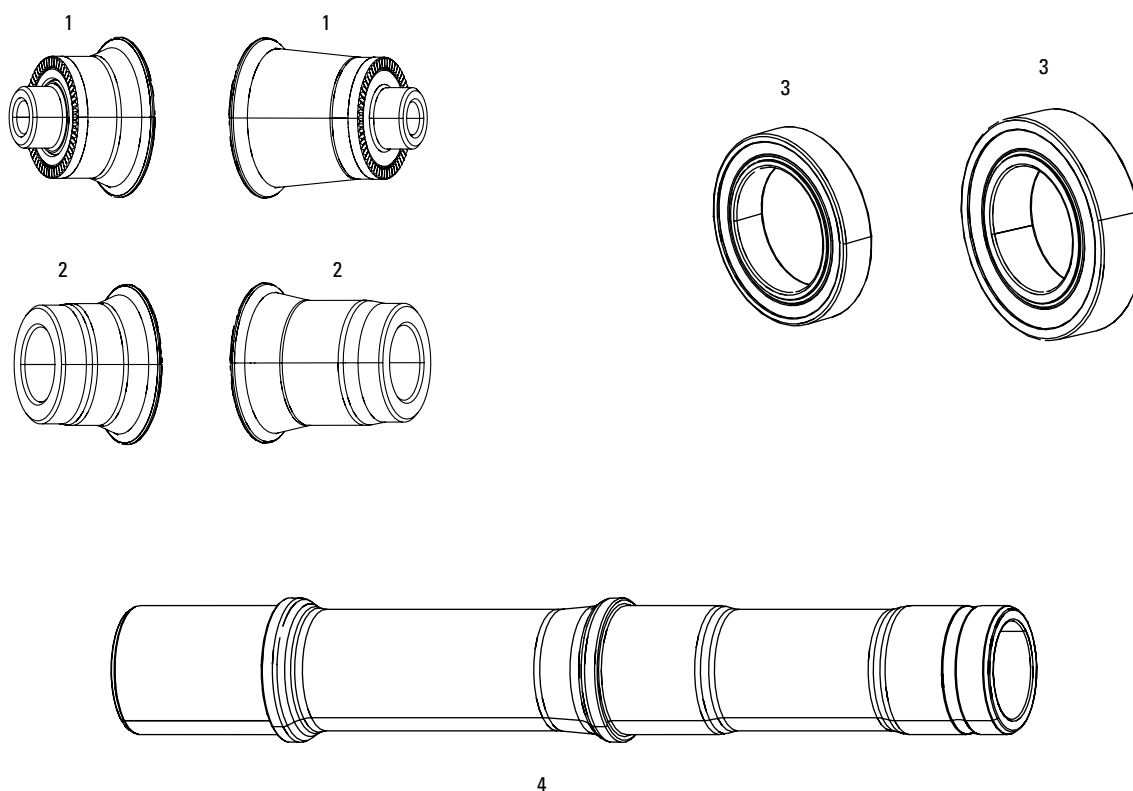
No. Part Number Description

- | | | |
|---|-----------------|---|
| 1 | 11.1915.049.000 | Hub Bearings Front or Rear Zipp 82/182 Pair |
| 2 | 11.1915.052.000 | Spring and Pawl Set for Zipp 182 Rear Hub Qty 5 |
| 3 | 11.1915.053.000 | Retaining Ring for Carbon Cap Zipp 82/182 Hub |
| 4 | 11.1915.054.000 | Freehub Body Spacer Zipp 182 Rear |
| 5 | 11.1915.056.000 | Freehub Body SRAM/Shimano Zipp 182 Red |

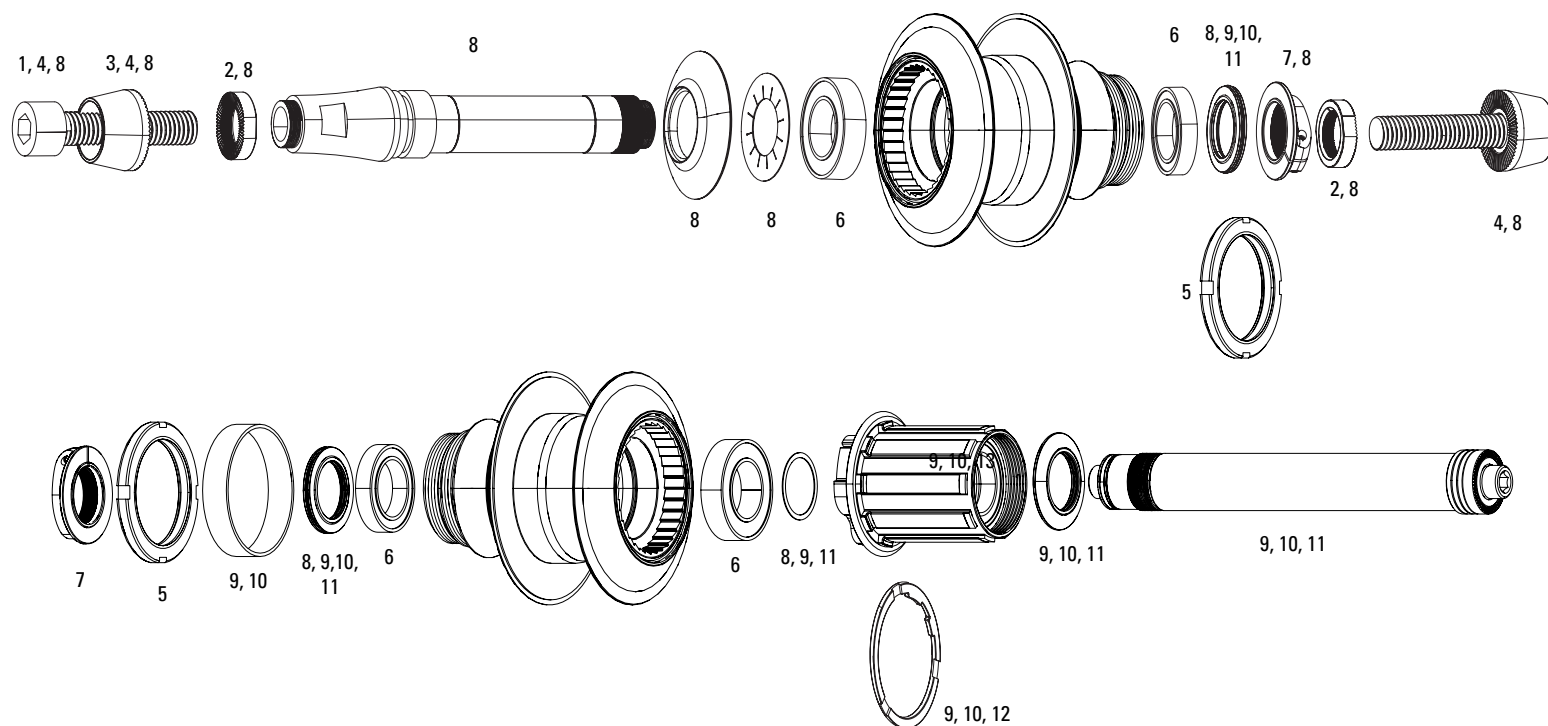


No.	Part Number	Description
-----	-------------	-------------

1	11.1918.057.000	Axle Front Zipp 333 Track Hub with Cones
2	11.1918.057.001	Axle Rear Zipp 333 Track Hub with Cones
3	11.1918.058.000	Bolts Axle Front Zipp 333 Hub M8 (Titanium Bolt) Qty 2
4	11.1918.058.001	Bolts Axle Rear Zipp 333 Hub M10 (Titanium Bolt) Qty 2
5	11.1918.059.000	Hub Bearings Front Zipp 333 Track Hub
6	11.1918.059.001	Hub Bearings Rear Zipp 333 Track Hub



No.	Part Number	Description
1	11.2018.040.000	Axle End Cap Set Rear Zipp Super 9 Disc Brake Quick Release
2	11.2018.040.010	Axle End Cap Set Rear Zipp Super 9 Disc Brake 12X142 Thru-Axle
3	11.2018.041.000	Bearing Kit Rear Zipp Super 9 Disc Brake 61803 Qty 1, 61903 Qty 1
4	11.2018.039.000	Axle Rear Zipp Super 9 Disc Brake



Notes:

10 and 11 speed disc conversion kits are not interchangeable.

No.	Part Number	Description
1	11.2018.018.000	Hex Bolt Zipp Track Disc 188
2	11.2018.019.000	Knurled Inner Washer Zipp Track 188V8 Pair
3	11.2018.020.000	Knurled Outer Washer Zipp Track 188V8
4	11.2018.021.000	Hex Bolt and Outer Washer Zipp Track Disc 188
ns	11.2018.022.000	Knurled Axle Washer and O-Ring Zipp Track Disc 188 10SPD
5	11.2018.023.000	Lockring Track Silver
5	11.2018.023.001	Lockring Track Black
6	11.2018.024.000	Hub Bearings Rear Pair ZIPP 188 V9
6	11.1915.064.000	Hub Bearings Front or Rear Pair Zipp Super 9
7	11.2018.025.000	Clinch Nut Rear ZIPP 188 V9
8	11.1918.026.000	Conversion Kit Disc 11 Speed to Track 188 Black
8	11.2100.107.000	Track Axle Conversion Kit Disc 188 (Super 9)
9	11.2100.108.000	Road Conversion Kit Disc 188 (Super 9) Axle & Shimano FH 10 speed
ns	11.2100.109.000	Road Conversion Kit Disc 188 (Super 9) Axle & Campy FH 10 speed
ns	11.1918.055.000	Conversion Kit Super 9 Disc Track to 11 speed to Campy
10	11.1918.055.001	Conversion Kit Super 9 Disc Track to 11 speed to SRAM
11	11.1915.038.000	Freehub Body Spacer Zipp 188 Rear Qty 2
12	11.1918.008.000	Cassette Spacer 10 speed 188 SRAM Freehub 11 speed
13	11.1918.007.000	Freehub Kit 188 11 speed SRAM
ns	11.1918.007.001	Freehub Kit 188 11 speed Campagnolo
ns	11.1915.074.010	Zipp Disc Bearing R8 Wheelchair Hub Pair
ns	11.1915.069.010	Zipp Disc Track Axle Nut M9
ns	11.1915.066.000	Zipp Disc Spacer Wheelchair Anodized
ns	11.1915.066.010	Zipp Disc Axle Sleeve 99
ns	11.1915.066.020	Zipp Disc Axle Wheelchair
ns	11.2018.042.000	Zipp Disc Wheelchair Axle Sleeve and Bearing Kit



ZIPF

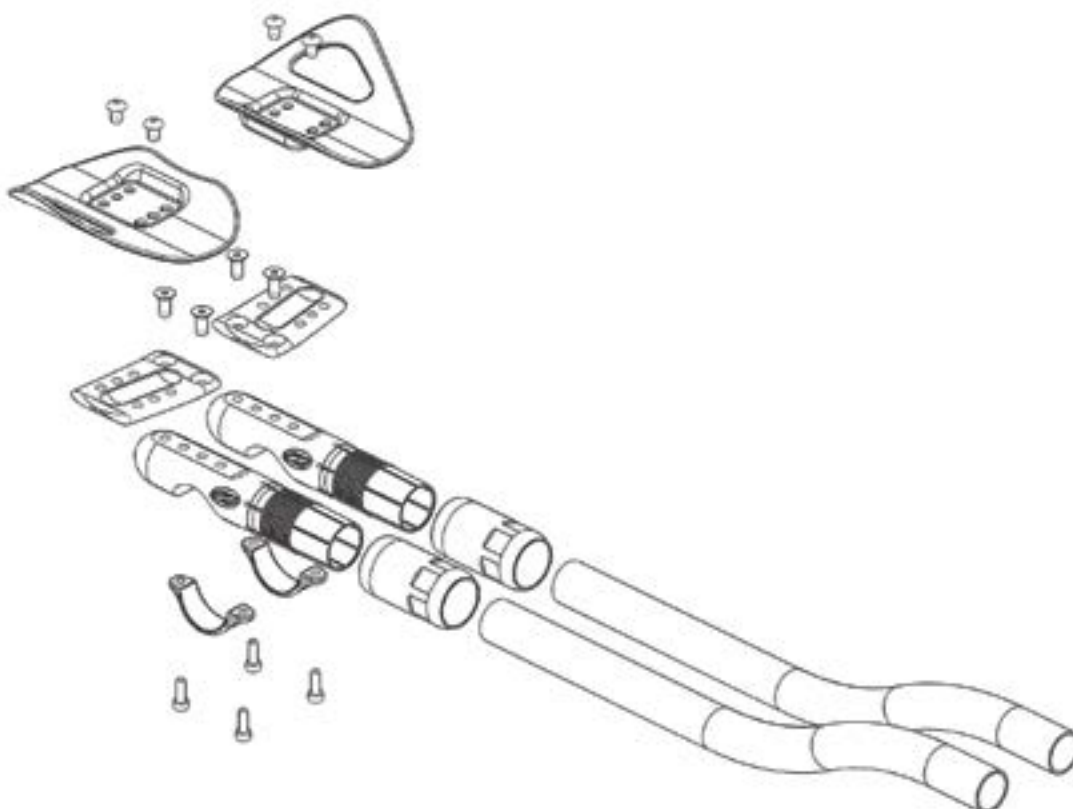


Part Number	Description
11.1915.024.290	Spokes & Nipples 3-pack 202mm CX-Ray J-Bend External Silver
11.1915.024.270	Spokes & Nipples 3-pack 204mm CX-Ray J-Bend External Silver
11.1915.024.000	Spokes & Nipples 3-pack 210mm CX-Ray J-Bend External Silver
11.1915.024.010	Spokes & Nipples 3-pack 212mm CX-Ray J-Bend External Silver
11.1915.024.020	Spokes & Nipples 3-pack 216mm CX-Ray J-Bend External Silver
11.1915.024.030	Spokes & Nipples 3-pack 224mm CX-Ray J-Bend External Silver
11.1915.024.040	Spokes & Nipples 3-pack 226mm CX-Ray J-Bend External Silver
11.1915.024.050	Spokes & Nipples 3-pack 228mm CX-Ray J-Bend External Silver
11.1915.024.060	Spokes & Nipples 3-pack 230mm CX-Ray J-Bend External Silver
11.1915.024.070	Spokes & Nipples 3-pack 232mm CX-Ray J-Bend External Silver
11.1915.024.080	Spokes & Nipples 3-pack 234mm CX-Ray J-Bend External Silver
11.1915.024.300	Spokes & Nipples 3-pack 236mm CX-Ray J-Bend External Silver
11.1915.024.280	Spokes & Nipples 3-pack 238mm CX-Ray J-Bend External Silver
11.1915.024.090	Spokes & Nipples 3-pack 240mm CX-Ray J-Bend External Silver
11.1915.024.100	Spokes & Nipples 3-pack 246mm CX-Ray J-Bend External Silver
11.1915.024.110	Spokes & Nipples 3-pack 248mm CX-Ray J-Bend External Silver
11.1915.024.120	Spokes & Nipples 3-pack 250mm CX-Ray J-Bend External Silver
11.1915.024.130	Spokes & Nipples 3-pack 252mm CX-Ray J-Bend External Silver
11.1915.024.140	Spokes & Nipples 3-pack 254mm CX-Ray J-Bend External Silver
11.1915.024.150	Spokes & Nipples 3-pack 256mm CX-Ray J-Bend External Silver
11.1915.024.160	Spokes & Nipples 3-pack 258mm CX-Ray J-Bend External Silver
11.1915.024.170	Spokes & Nipples 3-pack 260mm CX-Ray J-Bend External Silver
11.1915.024.180	Spokes & Nipples 3-pack 262mm CX-Ray J-Bend External Silver
11.1915.024.190	Spokes & Nipples 3-pack 264mm CX-Ray J-Bend External Silver
11.1915.024.200	Spokes & Nipples 3-pack 270mm CX-Ray J-Bend External Silver
11.1915.024.210	Spokes & Nipples 3-pack 274mm CX-Ray J-Bend External Silver
11.1915.024.220	Spokes & Nipples 3-pack 278mm CX-Ray J-Bend External Silver
11.1915.024.230	Spokes & Nipples 3-pack 280mm CX-Ray J-Bend External Silver
11.1915.024.240	Spokes & Nipples 3-pack 286mm CX-Ray J-Bend External Silver
11.1915.024.250	Spokes & Nipples 3-pack 288mm CX-Ray J-Bend External Silver
11.1915.024.260	Spokes & Nipples 3-pack 290mm CX-Ray J-Bend External Silver
11.1918.063.000	Spokes & Nipples & Titanium Washers 3-pack 226mm CX-Sprint Straight-Pull Hexagonal Secure Lock Black Oxide
11.1918.063.010	Spokes & Nipples & Titanium Washers 3-pack 236mm CX-Sprint Straight-Pull Hexagonal Secure Lock Black Oxide
11.1918.063.020	Spokes & Nipples & Titanium Washers 3-pack 248mm CX-Sprint Straight-Pull Hexagonal Secure Lock Black Oxide
11.1918.063.030	Spokes & Nipples & Titanium Washers 3-pack 258mm CX-Sprint Straight-Pull Hexagonal Secure Lock Black Oxide
11.1918.063.040	Spokes & Nipples & Titanium Washers 3-pack 260mm CX-Sprint Straight-Pull Hexagonal Secure Lock Black Oxide
11.1918.063.050	Spokes & Nipples & Titanium Washers 3-pack 270mm CX-Sprint Straight-Pull Hexagonal Secure Lock Black Oxide
11.1918.063.060	Spokes & Nipples & Titanium Washers 3-pack 272mm CX-Sprint Straight-Pull Hexagonal Secure Lock Black Oxide
11.1918.063.070	Spokes & Nipples & Titanium Washers 3-pack 274mm CX-Sprint Straight-Pull Hexagonal Secure Lock Black Oxide
11.1918.063.080	Spokes & Nipples & Titanium Washers 3-pack 284mm CX-Sprint Straight-Pull Hexagonal Secure Lock Black Oxide
11.1918.063.090	Spokes & Nipples & Titanium Washers 3-pack 232mm CX-Sprint Straight-Pull Hexagonal Secure Lock Black Oxide
11.1918.063.100	Spokes & Nipples & Titanium Washers 3-pack 234mm CX-Sprint Straight-Pull Hexagonal Secure Lock Black Oxide
11.1918.063.110	Spokes & Nipples & Titanium Washers 3-pack 222mm CX-Sprint Straight-Pull Hexagonal Secure Lock Black Oxide
11.1918.063.120	Spokes & Nipples & Titanium Washers 3-pack 286mm CX-Sprint Straight-Pull Hexagonal Secure Lock Black Oxide
11.1915.026.020	Nipple Washers Oval 50-pack for Firecrest Wheels
11.1915.026.030	Internal for SRAM S40 S60 S80 & Flashpoint Wheels
11.1915.026.040	External Locking Nipples Black 20-pack for 101 Wheels 2.0 x14
11.1915.026.060	Nipple Washers Round Titanium 25-pack for 202 Carbon Clincher Firecrest Wheels
11.1915.026.070	External Hexagonal Secure Lock Nipples Black 20-pack for 30/60 101/202CC Wheels 2.0 x 14
11.1915.026.080	Spoke Retention Plugs 303 Disc Brake Hub 15 Pieces
11.1915.077.000	Zipp T-Handle with 55mm and 150mm Nipple Drivers
11.1915.025.000	Valve Cover Patches Z-logo 5 pieces



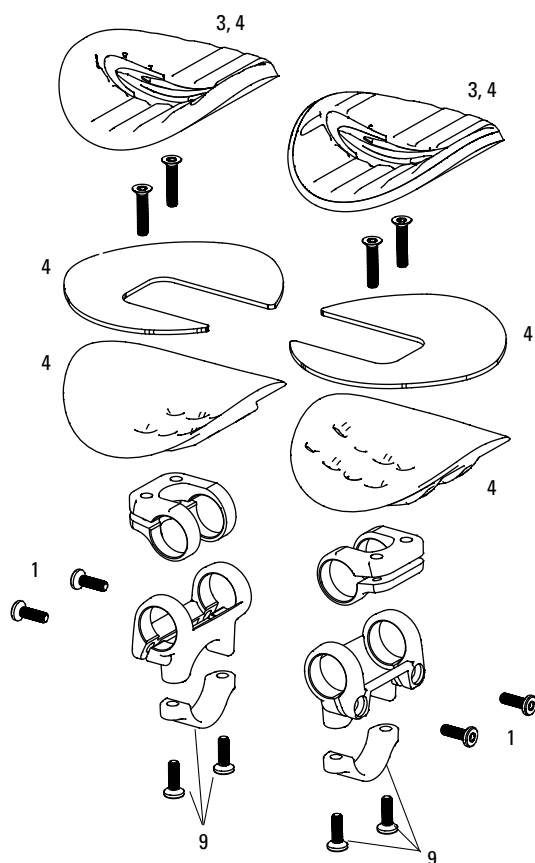
Part Number	Description
-------------	-------------

11.1918.015.000	Decal Set 202 Matte Black/No Border Zipp Logo Complete for One Tubular or Carbon Clincher
11.1918.030.000	Decal Set 202 Matte White/No Border Zipp Logo Complete for One Wheel
11.1918.035.000	Decal Set 202 Matte Blue/No Border Zipp Logo Complete for One Wheel
11.1918.036.000	Decal Set 202 Matte Red/No Border Zipp Logo Complete for OneWheel
11.1918.037.000	Decal Set 202 Matte Pink/No Border Zipp Logo Complete for One Wheel
11.1918.038.000	Decal Set 202 Matte Green/No Border Zipp Logo Complete for One Wheel
11.1918.015.001	Decal Set 303 Matte Black/No Border Zipp Logo Complete for One Tubular or Carbon Clincher
11.1918.030.001	Decal Set 303 Matte White/No Border Zipp Logo Complete for One Wheel
11.1918.035.001	Decal Set 303 Matte Blue/No Border Zipp Logo Complete for One Wheel
11.1918.036.001	Decal Set 202 Matte Red/No Border Zipp Logo Complete for OneWheel
11.1918.037.001	Decal Set 202 Matte Pink/No Border Zipp Logo Complete for One Wheel
11.1918.038.001	Decal Set 202 Matte Green/No Border Zipp Logo Complete for One Wheel
11.1918.015.002	Decal Set 404 Matte Black/No Border Zipp Logo Complete for One Tubular or Carbon Clincher
11.1918.030.002	Decal Set 404 Matte White/No Border Zipp Logo Complete for One Wheel
11.1918.035.002	Decal Set 404 Matte Blue/No Border Zipp Logo Complete for One Wheel
11.1918.036.002	Decal Set 404 Matte Red/No Border Zipp Logo Complete for OneWheel
11.1918.037.002	Decal Set 404 Matte Pink/No Border Zipp Logo Complete for One Wheel
11.1918.038.002	Decal Set 404 Matte Green/No Border Zipp Logo Complete for One Wheel
11.1918.036.004	Decal Set 404 650 Matte Red/No Border Zipp Logo Complete forOne Wheel Or Disc
11.1918.015.004	Decal Set 404 650 Matte Black/No Border Zipp Logo Complete forOne Wheel Or Disc
11.1918.030.004	Decal Set 404 650 Matte White/No Border Zipp Logo Complete for One Wheel
11.1918.035.004	Decal Set 404 650 Matte Blue/No Border Zipp Logo Complete for One Wheel Or Disc
11.1918.037.004	Decal Set 404 650 Matte Pink/No Border Zipp Logo Complete for One Wheel Or Disc
11.1918.038.004	Decal Set 404 650 Matte Green/No Border Zipp Logo Complete for One Wheel Or Disc
11.1918.015.003	Decal Set 808 Matte Black/No Border Zipp Logo Complete for One Tubular or Carbon Clincher
11.1918.030.003	Decal Set 808 Matte White/No Border Zipp Logo Complete for One Wheel or Disc
11.1918.035.003	Decal Set Disc/808 Matte Blue/No Border Zipp Logo Complete for One Wheel
11.1918.036.003	Decal Set Disc/808 Matte Red/No Border Zipp Logo Complete for One Wheel
11.1918.037.003	Decal Set Disc/808 Matte Pink/No Border Zipp Logo Complete for One Wheel
11.1918.038.003	Decal Set Disc/808 Matte Green/No Border Zipp Logo Completefor One Wheel



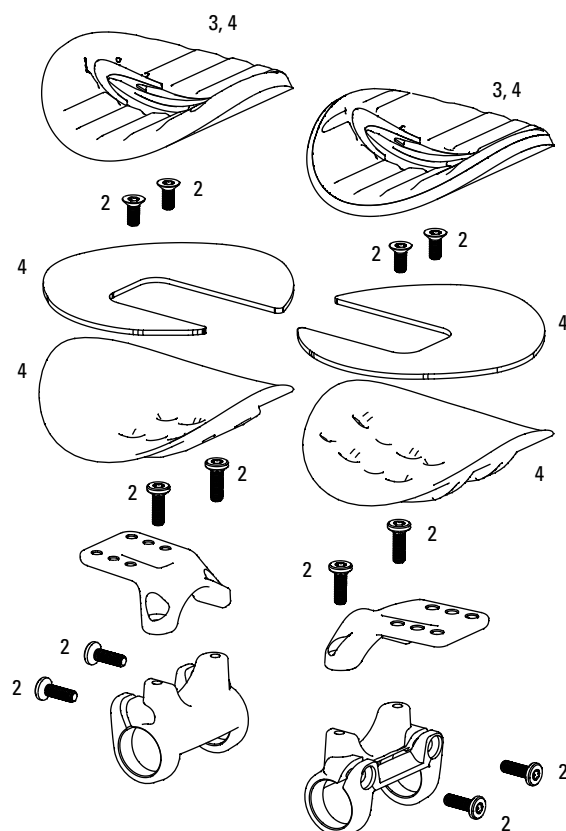
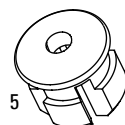
No.	Part Number	Description
-----	-------------	-------------

NA	80.1900.010.000	Handlebar End Pugs Zipp Carbon
NA	80.1900.011.000	Vuka Grip Tape for VukaAero
NA	11.6618.013.000	Vuka Elbow Pad Wing Extensions for Vuka Aero & Vuka Clip Left/Right



Top Mount Clip

4 Bolts included
in Riser Bolt Kits



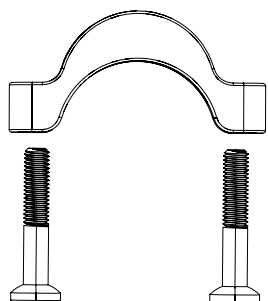
Low Mount Clip

Note:
Vuka Alumina Riser Kits and Bolts kits, see page 26

No.	Part Number	Description
1	11.6618.000.000	Vuka Alumina Clip Bolt Kit Top Mount 1 Side
2	11.6618.000.001	Vuka Alumina Clip Bolt Kit Low Mount 1 Side
3	11.6618.001.000	Vuka Alumina Clip Armrest Pad Kit
4	11.6618.001.001	Vuka Alumina/Stealth/Aero Armrest Kit
5	11.6618.003.000	Vuka Alumina/Carbon Extensions End Plugs
6	11.6618.002.000	Vuka Alumina Riser Bolt Kit for 10mm
7	11.6618.002.001	Vuka Alumina Riser Bolt Kit for 25mm
8	11.6618.002.002	Vuka Alumina Riser Bolt Kit for 50mm
9	11.6618.014.000	Vuka Alumina Top Mount Lower Clamps and Bolts
ns	11.6618.012.000	Zipp Carbon Assembly Paste 5ml
ns	11.6618.022.000	Neck & Computer Insert Assembly for Vuka Alumina BTA Mount V2

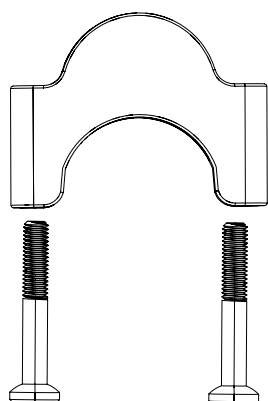


RISER 10/25/50MM



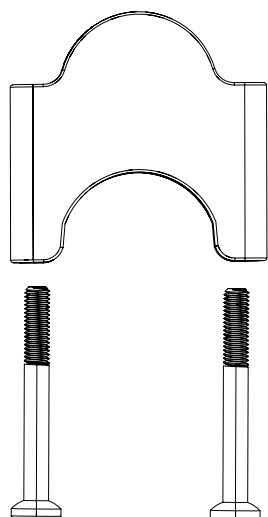
Part Number Description

- 00.6618.023.000 Aerobar Vuka Alumina Clip Riser Kit 10mm
- 11.6618.002.000 Vuka Alumina Riser Bolt Kit for 10mm



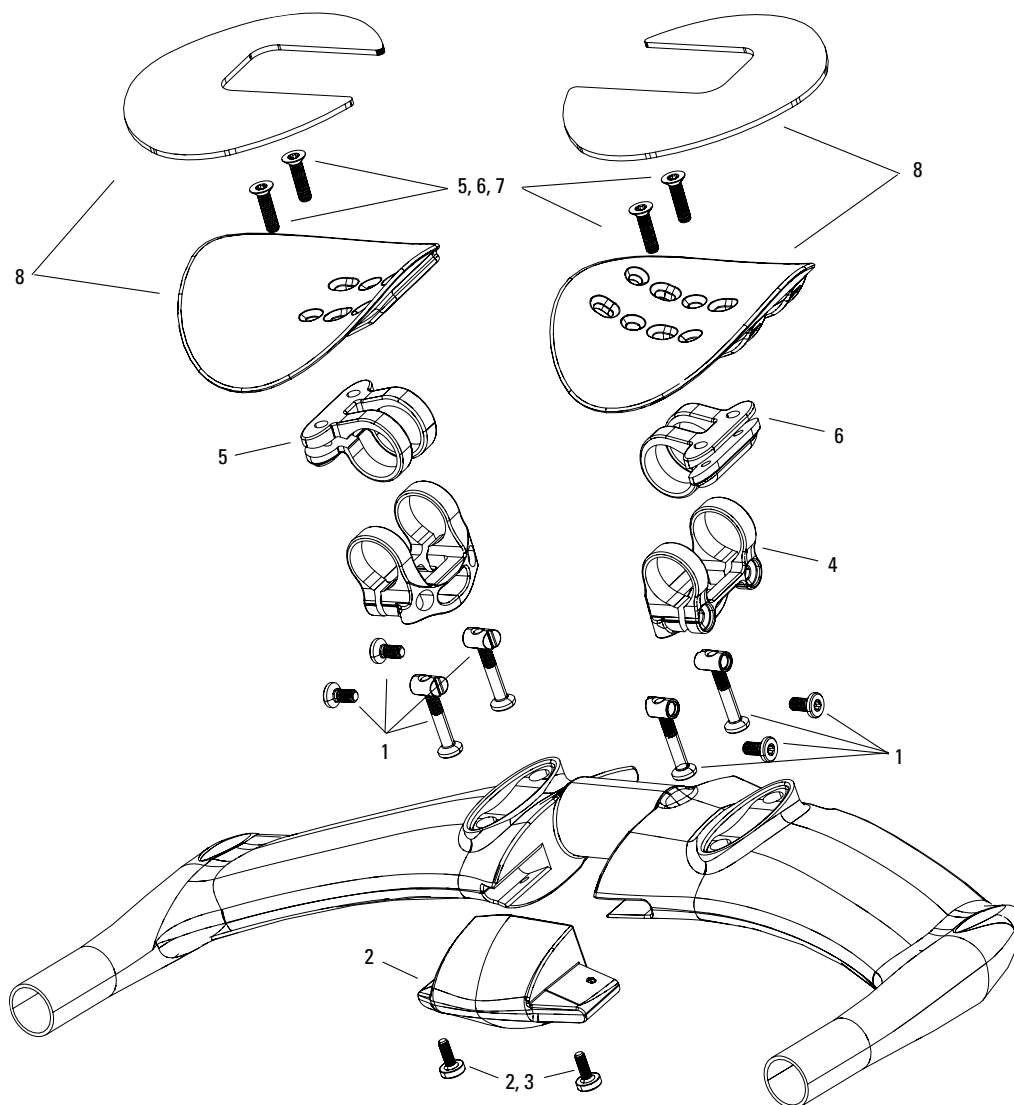
Part Number Description

- 00.6618.023.001 Aerobar Vuka Alumina Clip Riser Kit 25mm
- 11.6618.002.001 Vuka Alumina Riser Bolt Kit for 25mm



Part Number Description

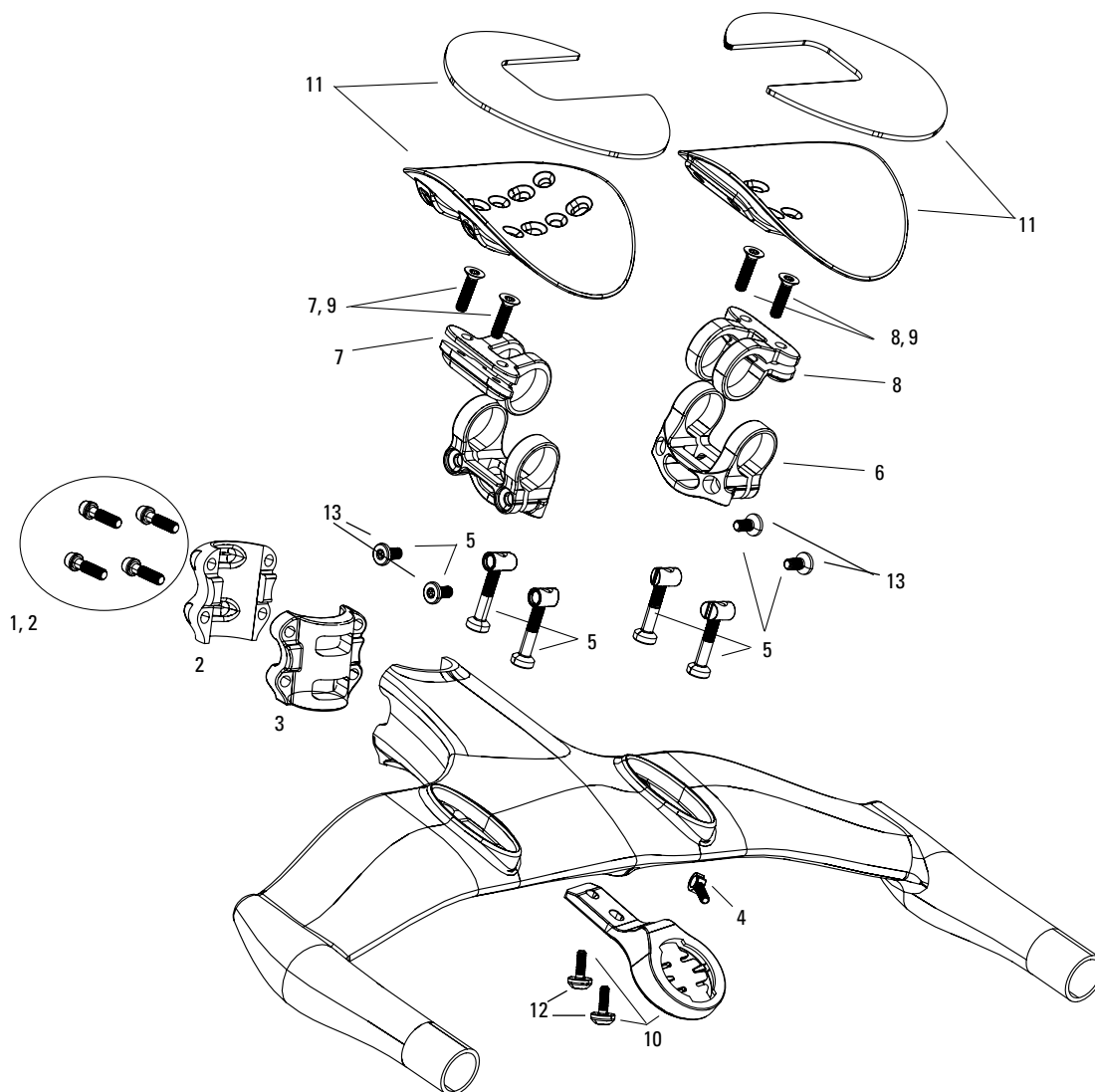
- 00.6618.023.002 Aerobar Vuka Alumina Clip Riser Kit 50mm
- 11.6618.002.002 Vuka Alumina Riser Bolt Kit for 50mm



Note:

VukaStealth/Aero Riser Kits and Bolts kits, see page 29

No.	Part Number	Description
1	11.6618.019.000	Vuka Aero Extension Tower Bolt Kit
2	11.6618.021.000	Vuka Aero Center Cap Kit
3	11.6618.021.001	Vuka Aero Center Cap Bolt Kit
4	11.6618.008.002	Vuka Stealth Extension Tower (1 Side Only)
5	11.6618.009.000	Vuka Stealth Armrest Clamp Right with Bolts 20mm
6	11.6618.009.001	Vuka Stealth Armrest Clamp Left with Bolts 20mm
7	11.6618.009.002	Vuka Stealth Armrest Clamp Bolt Kit 20mm
8	11.6618.001.001	Vuka Alumina/Stealth/Aero Armrest Kit



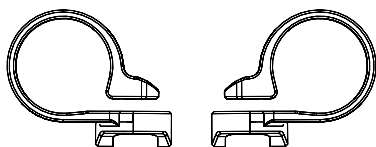
Notes:

Vuka Stealth/Aero Riser Kits and Bolts kits, see page 29

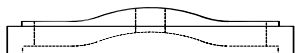
No.	Part Number	Description
1	11.6618.004.000	Vuka Stealth Bolts for Stem with No Spacer T25 Ti 15mm Bolts
ns	11.6618.004.001	Vuka Stealth Bolts for Stem with Spacer T25 Ti 30mm Bolts
2	11.6618.004.002	Vuka Stealth Stem Clamp with T25 Ti 15mm Bolts
3	11.6618.004.003	Vuka Stealth Stem Length Spacer
4	11.6618.005.000	Vuka Stealth Threaded Cable Guide Qty2
5	11.6618.008.000	Vuka Stealth Extension Tower Bolt Kit 31mm/12mm
6	11.6618.008.002	Vuka Stealth Extension Tower (1 Side Only)
7	11.6618.009.000	Vuka Stealth Armrest Clamp Right with Bolts 20mm
8	11.6618.009.001	Vuka Stealth Armrest Clamp Left with Bolts 20mm
9	11.6618.009.002	Vuka Stealth Armrest Clamp Bolt Kit 20mm
10	11.6618.010.000	Vuka Stealth Computer Mount 1/4 Turn with T25 16mm Ti Bolts
11	11.6618.001.001	Vuka Alumina/Stealth/Aero Armrest Kit
ns	11.6618.011.000	Vuka Stealth T25 2-sided Wrench
ns	11.6618.012.000	Zipp Carbon Assembly Paste 5ml
12	11.6618.010.001	Vuka Stealth Computer Mount T25 16mm Ti Bolts Qty3
13	11.6618.008.001	Vuka Stealth Extension Clamp Bolt Kit 10mm



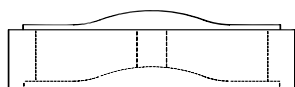
RISER -12/5/10/25/50MM



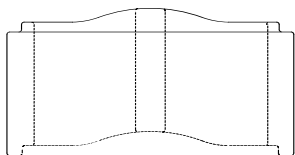
11.6618.015.000
Handlebar Extension Clamp Low Profile For
Vuka Stealth or Vuka Aero



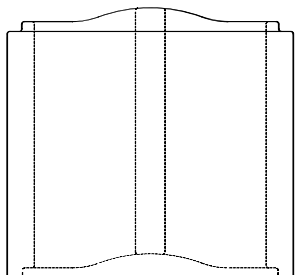
11.6618.016.000
Riser 5mm Kit Vuka Aero/Stealth (No Bolts)



11.6618.016.001
Riser 10mm Kit Vuka Aero/Stealth (No Bolts)



11.6618.016.002
Riser 25mm Kit Vuka Aero/Stealth (No Bolts)



11.6618.016.003
Riser 50mm Kit Vuka Aero/Stealth (No Bolts)

BOLT KIT 5/10/25/50MM

Bolts included in 11.6618.015.000

11.6618.017.000 Vuka Aero 5mm Riser Bolt Kit
11.6618.018.000 Vuka Stealth 5mm Riser/ Vuka Aero No Riser Bolt Kit

11.6618.017.000 Vuka Aero 10mm Riser Bolt Kit
11.6618.007.000 Vuka Stealth 10mm Riser Bolt Kit 40mm

11.6618.017.002 Vuka Aero 25mm Riser Bolt Kit
11.6618.007.001 Vuka Stealth 25mm Riser Bolt Kit 25mm

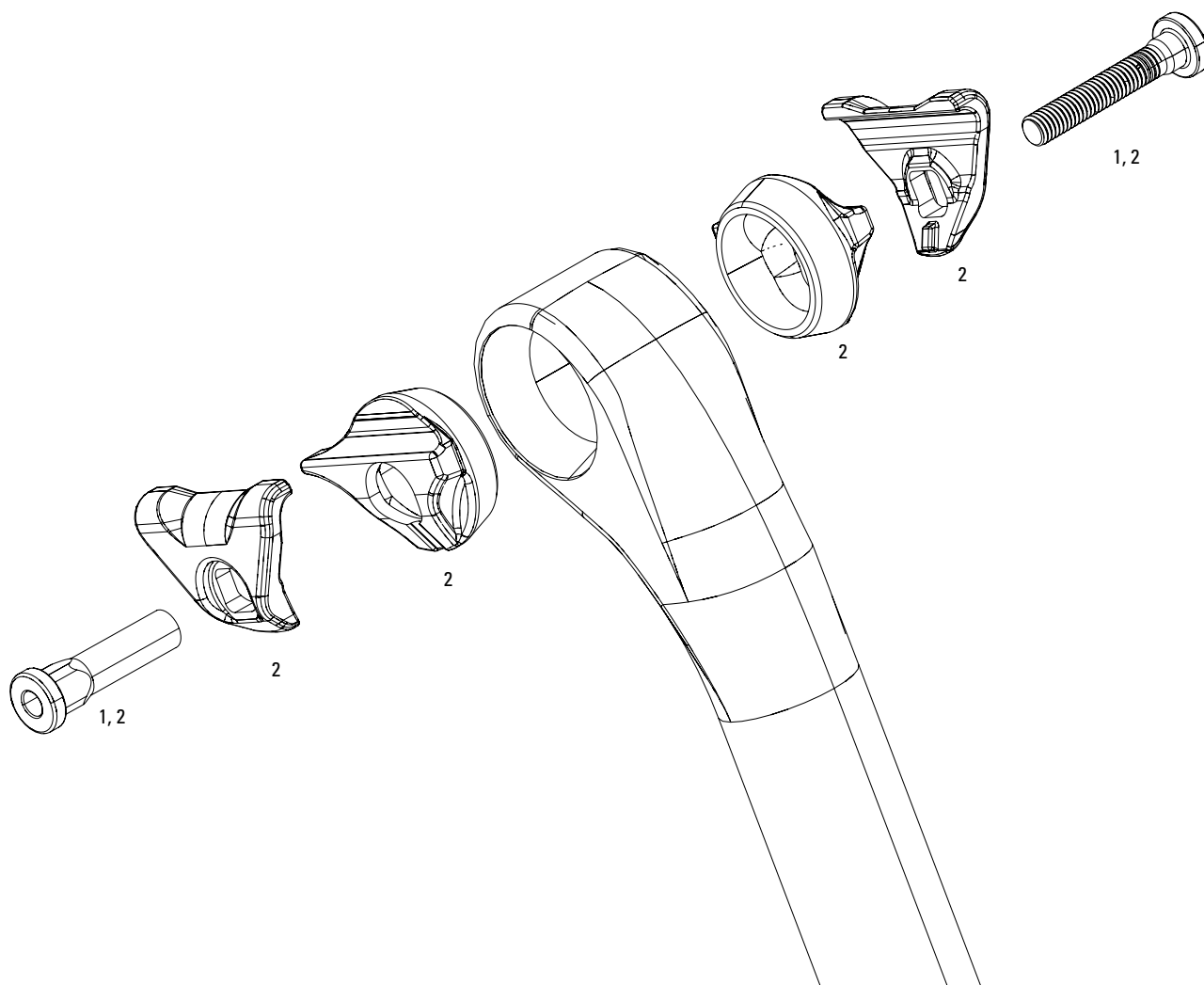
11.6618.017.003 Vuka Aero 50mm Riser Bolt Kit
11.6618.007.002 Vuka Stealth 50mm Riser Bolt Kit 50mm

Notes:

Vuka Aero and Stealth bolt kits are NOT interchangeable.

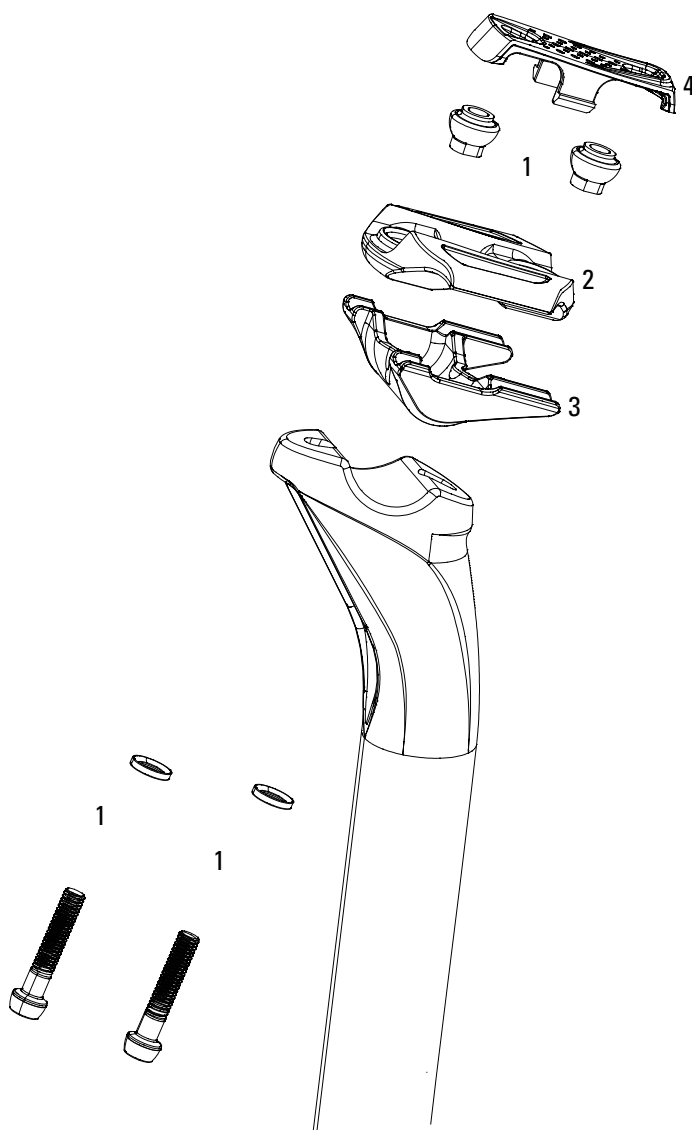
Part Number Description

11.6618.015.000	Handlebar Extension Clamp Low Profile For Vuka Stealth or Vuka Aero
11.6618.016.000	Riser 5mm Kit Vuka Aero/Stealth (No Bolts)
11.6618.016.001	Riser 10mm Kit Vuka Aero/Stealth (No Bolts)
11.6618.016.002	Riser 25mm Kit Vuka Aero/Stealth (No Bolts)
11.6618.016.003	Riser 50mm Kit Vuka Aero/Stealth (No Bolts)
11.6618.017.000	Vuka Aero 5mm Riser Bolt Kit
11.6618.018.000	Vuka Stealth 5mm Riser/ Vuka Aero No Riser Bolt Kit
11.6618.017.001	Vuka Aero 10mm Riser Bolt Kit
11.6618.017.002	Vuka Aero 25mm Riser Bolt Kit
11.6618.017.003	Vuka Aero 50mm Riser Bolt Kit
11.6618.007.000	Vuka Stealth 10mm Riser Bolt Kit 40mm
11.6618.007.001	Vuka Stealth 25mm Riser Bolt Kit 25mm
11.6618.007.002	Vuka Stealth 50mm Riser Bolt Kit 50mm



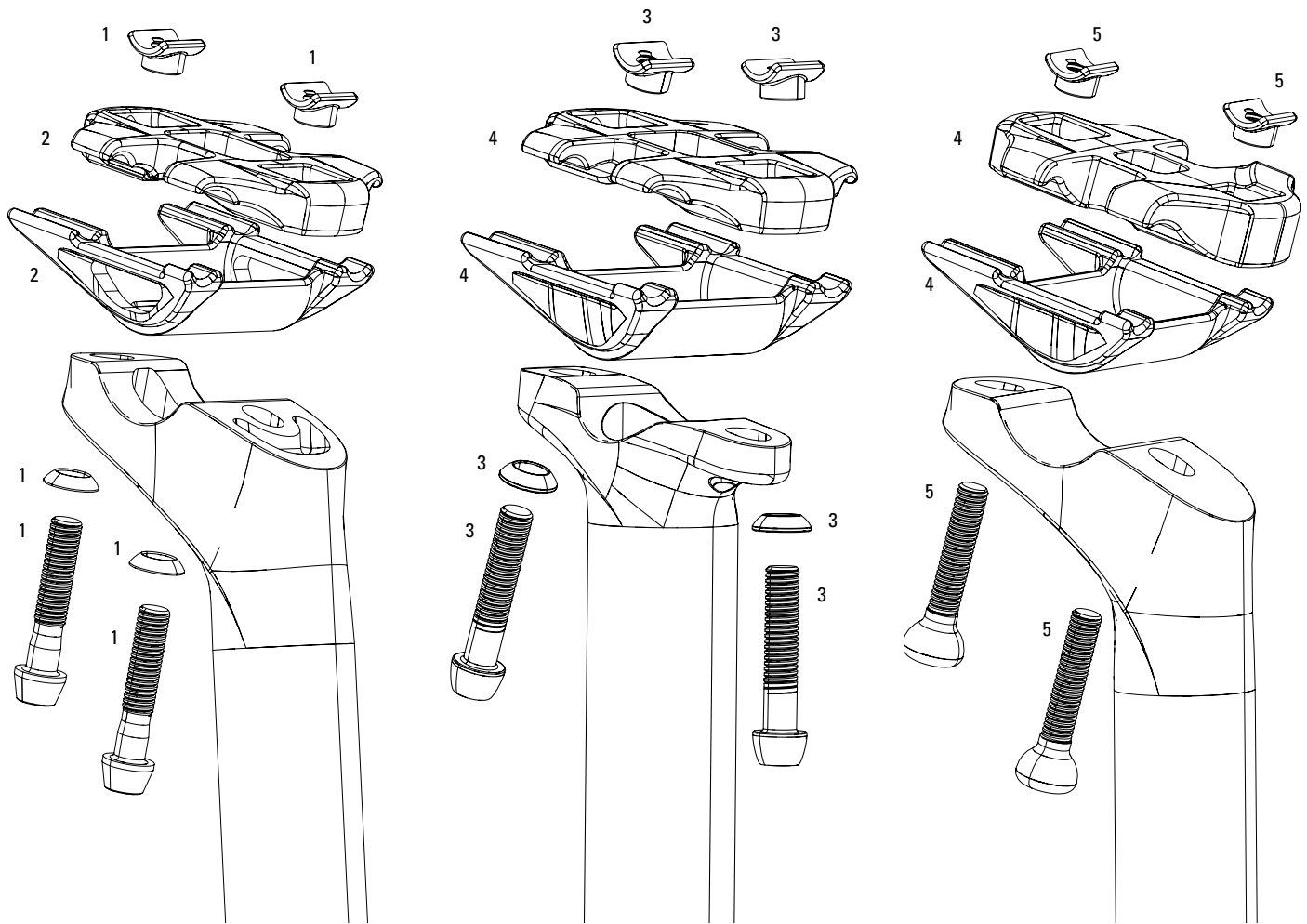
No.	Part Number	Description
-----	-------------	-------------

1	11.6818.038.000	Seatpost SL Speed B1 Bolt Kit Steel Black
2	11.6818.039.000	Seatpost SL Speed B1 Clamp Kit



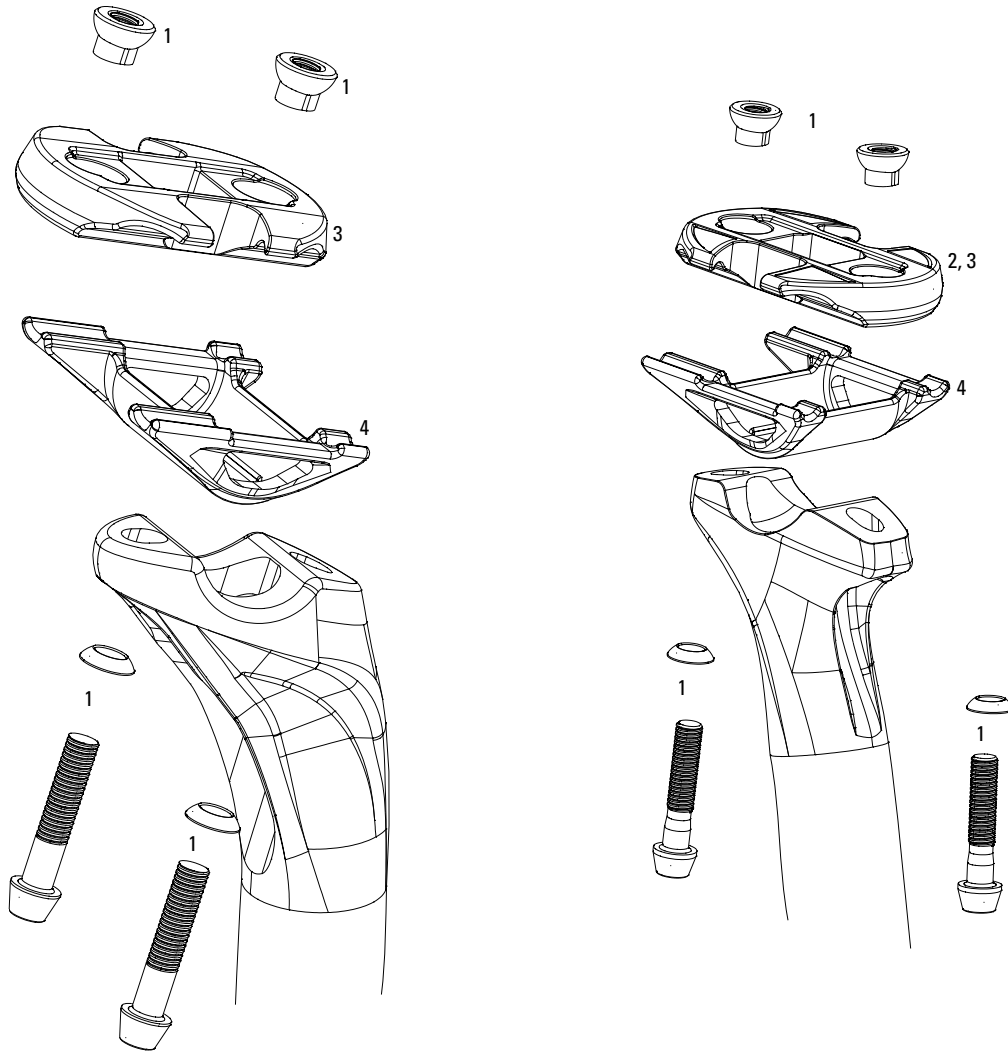
No.	Part Number	Description
-----	-------------	-------------

1	11.6818.009.000	Seatpost SL Speed Bolts, Nuts, Washers Kit
2	11.6818.010.000	Seatpost SL Speed Top Clamp
3	11.6818.011.000	Seatpost SL Speed Bottom Clamp
4	11.6818.012.000	SP SL Speed Top Cap White
4	11.6818.012.001	SP SL Speed Top Cap Red



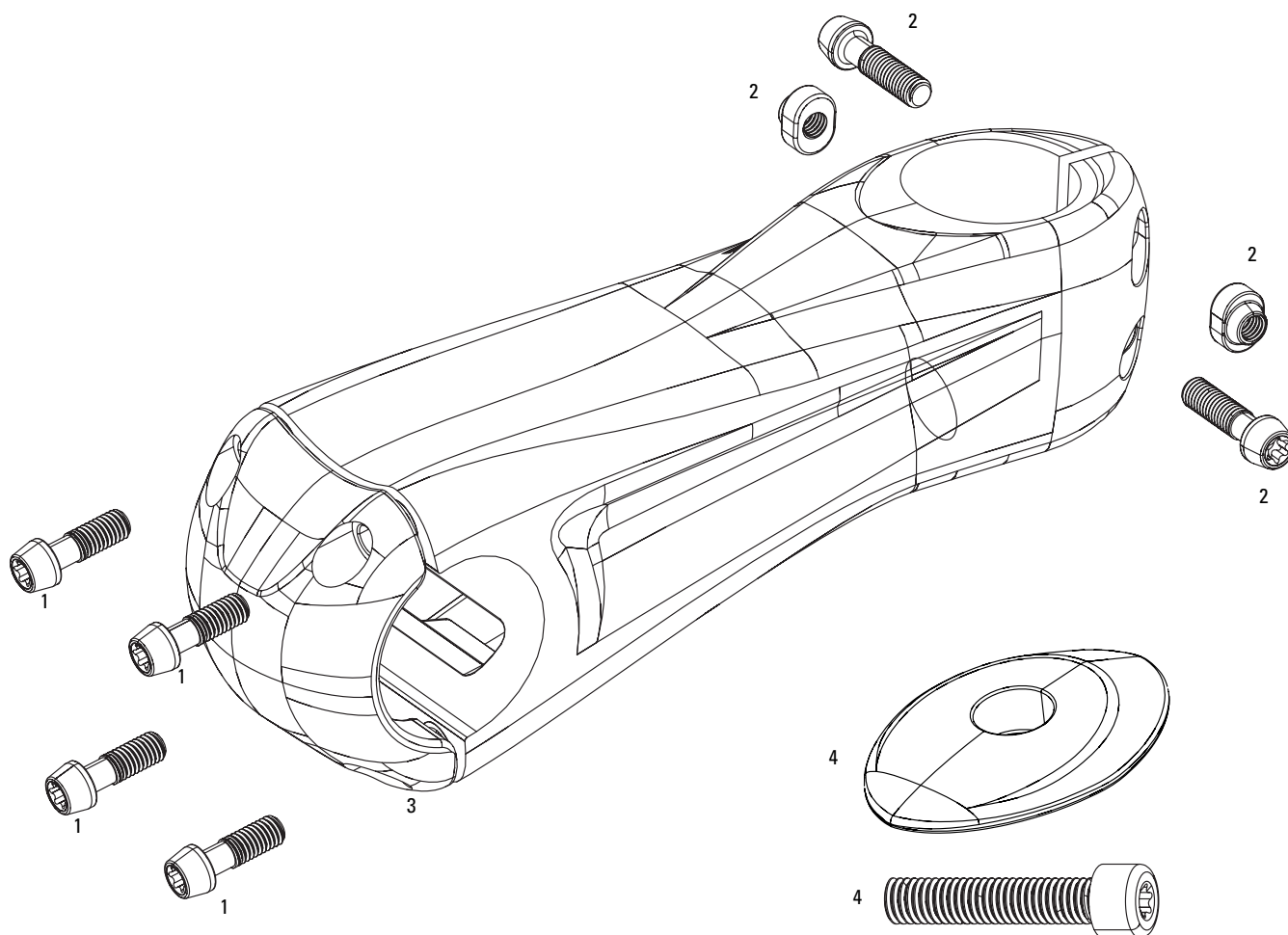
No.	Part Number	Description
-----	-------------	-------------

1	11.6818.045.000	Seatpost Service Course SL Bolt Kit B1
2	11.6818.044.000	Seatpost Service Course SL Top and Bottom Clamp Shiny Black B1
3	11.6818.028.000	Seat Post Service Course 0 Offset Bolt Kit Ti Beyond Black B1
4	11.6818.046.000	Seatpost Service Course 0 and 20 Offset Top and Bottom Clamp B1
5	11.6818.029.000	Seat Post Service Course 20mm Offset Bolt Kit Steel Blast Silver B1



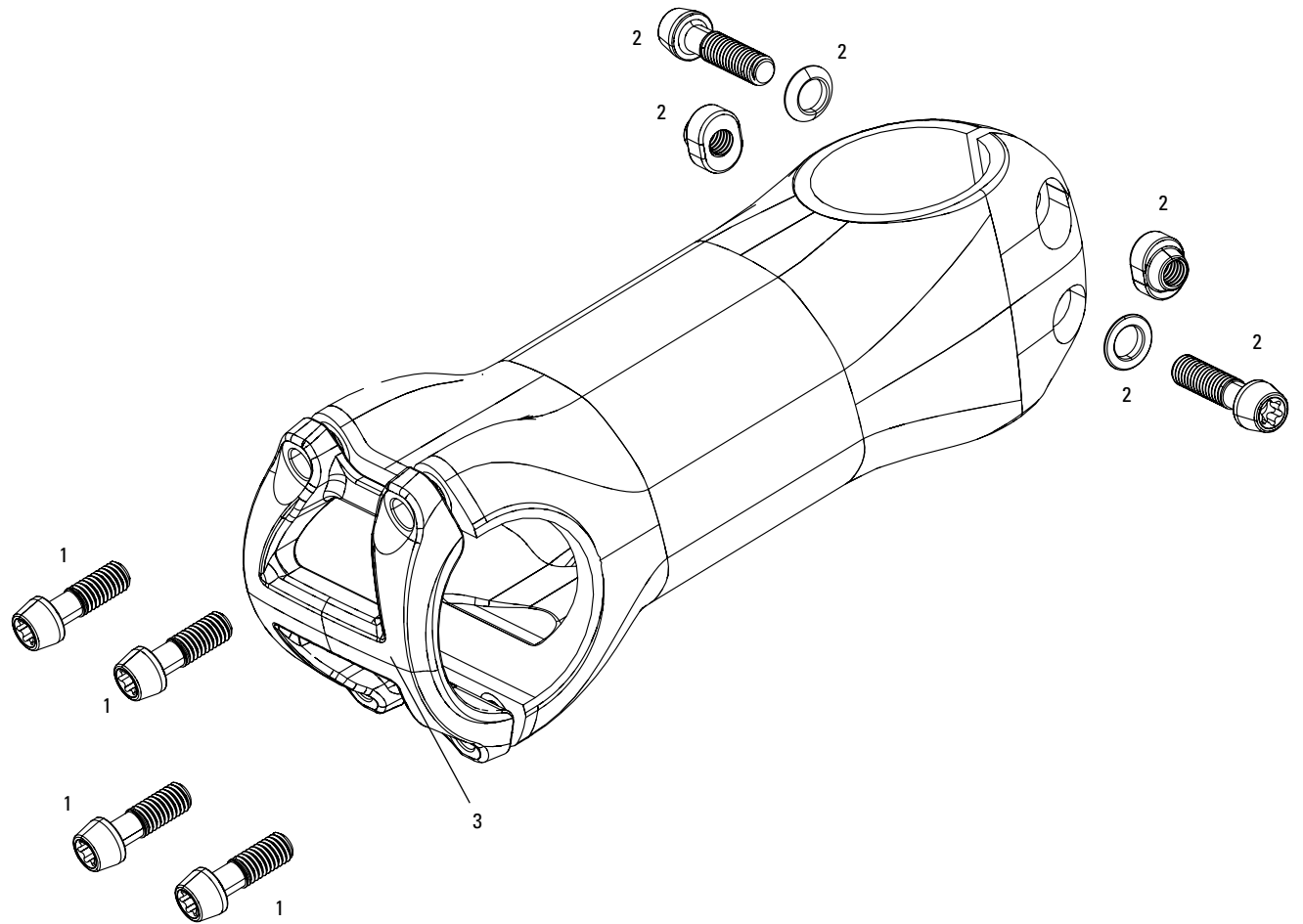
No.	Part Number	Description
-----	-------------	-------------

1	11.6818.029.000	Seat Post Service Course 20mm Offset Bolt Kit Steel Blast Silver B1
1	11.6818.028.000	Seat Post Service Course 0 Offset Bolt Kit Ti Beyond Black B1
1	11.6815.034.001	Seatpost Service Course SL Bolt Kit Ti Beyond Black A1/B1
1	11.6815.035.000	Seatpost Service Course Bolt Kit Blast Steel Silver A1
1	11.6815.034.000	Seatpost Service Course SL Bolt Kit Ti
2	11.6815.036.001	Seatpost Service Course SL Top Clamp Zero Offset Shiny Black A1/B1
3	11.6815.037.000	Seatpost Service Course Top Clamp Blast Black A1
3	11.6815.037.001	Seatpost Service Course Top Clamp Zero Offset Blast Black B1
4	11.6815.038.000	Seatpost Service Course SL Bottom Clamp Shiny Black A1/B1
4	11.6815.039.000	Seatpost Service Course Bottom Clamp Blast Black



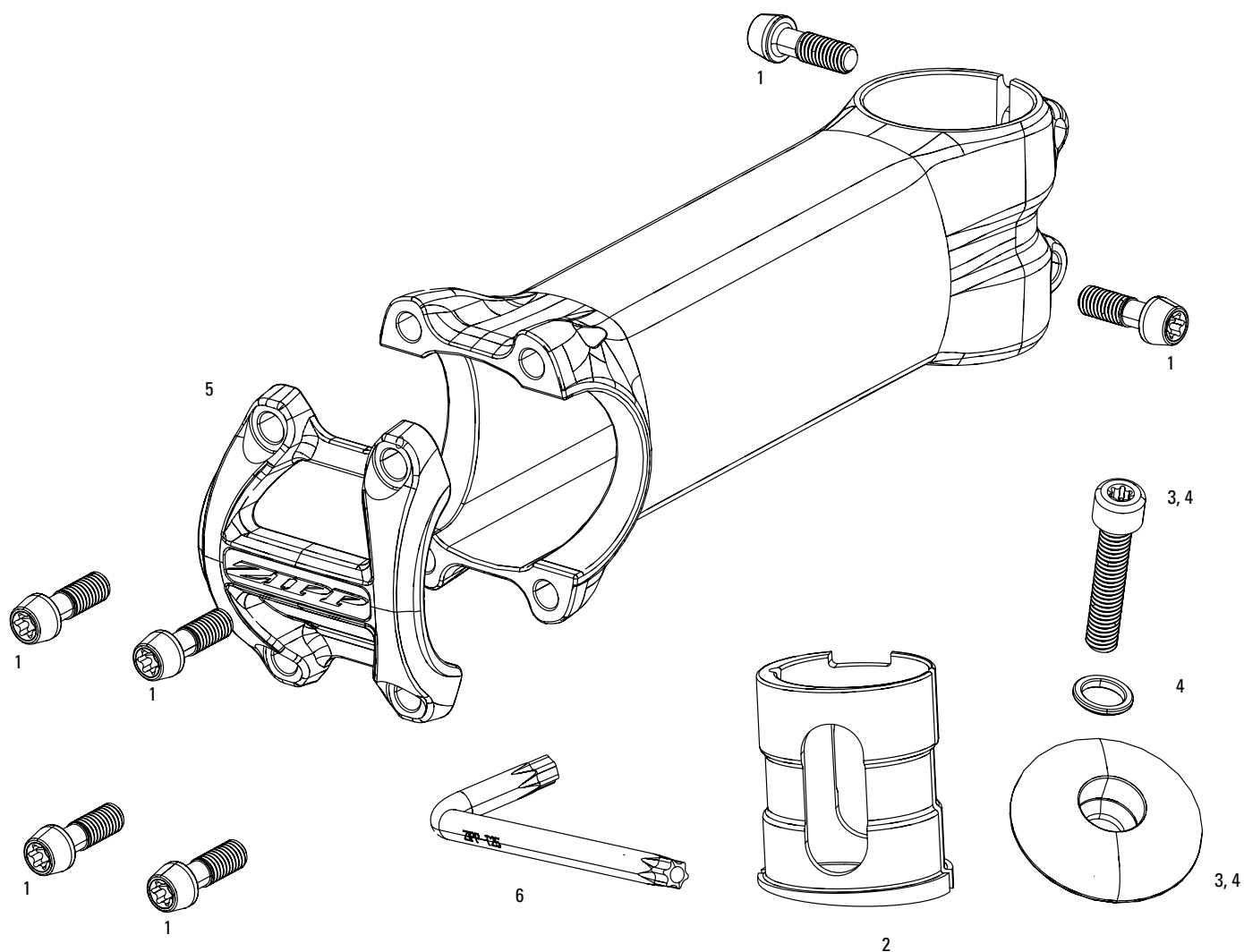
No.	Part Number	Description
-----	-------------	-------------

1	11.6518.003.000	Stem SL Sprint Bolt Kit Faceplate
2	11.6518.004.000	Stem SL Sprint Bolt Kit Steerer clamp
3	11.6518.005.000	Stem SL Sprint Faceplate
4	11.6518.006.000	Stem SL Sprint Top Cap and Bolt



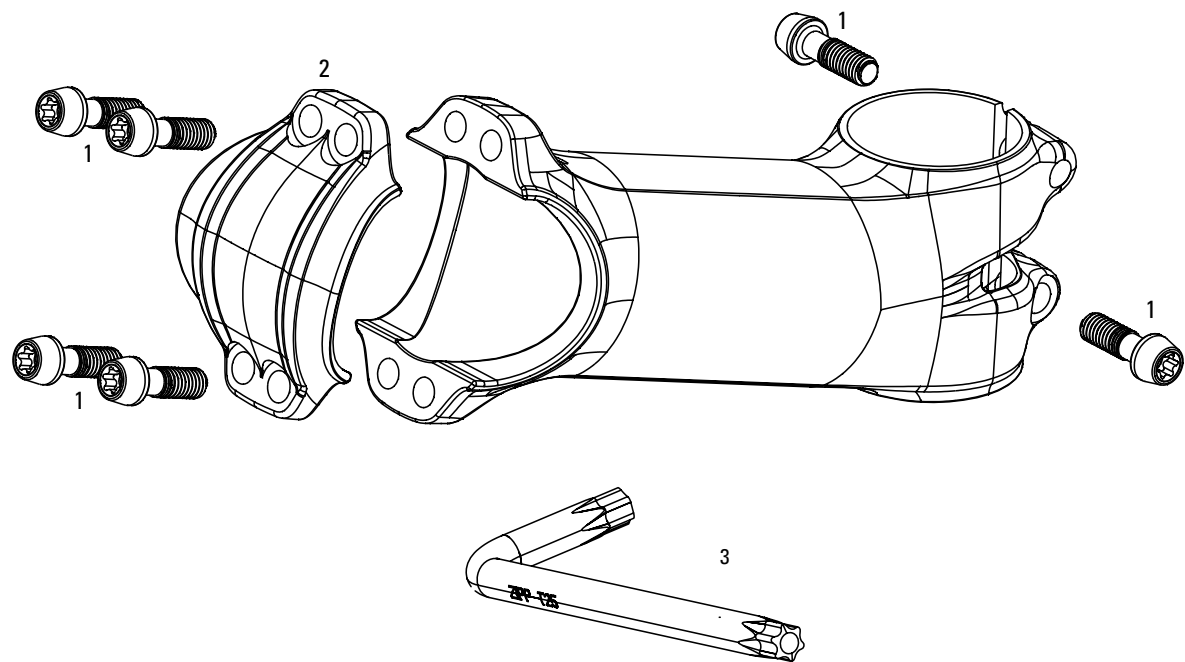
No.	Part Number	Description
-----	-------------	-------------

1	11.6518.015.000	Stem SL Speed B1 Bolt Kit Faceplate, Titanium, Qty 4
2	11.6518.016.000	Stem SL Speed B1 Bolt Kit Steerer Clamp, Titanium, Qty 2
3	11.6518.017.000	Stem SL Speed B1 Faceplate, Aluminum

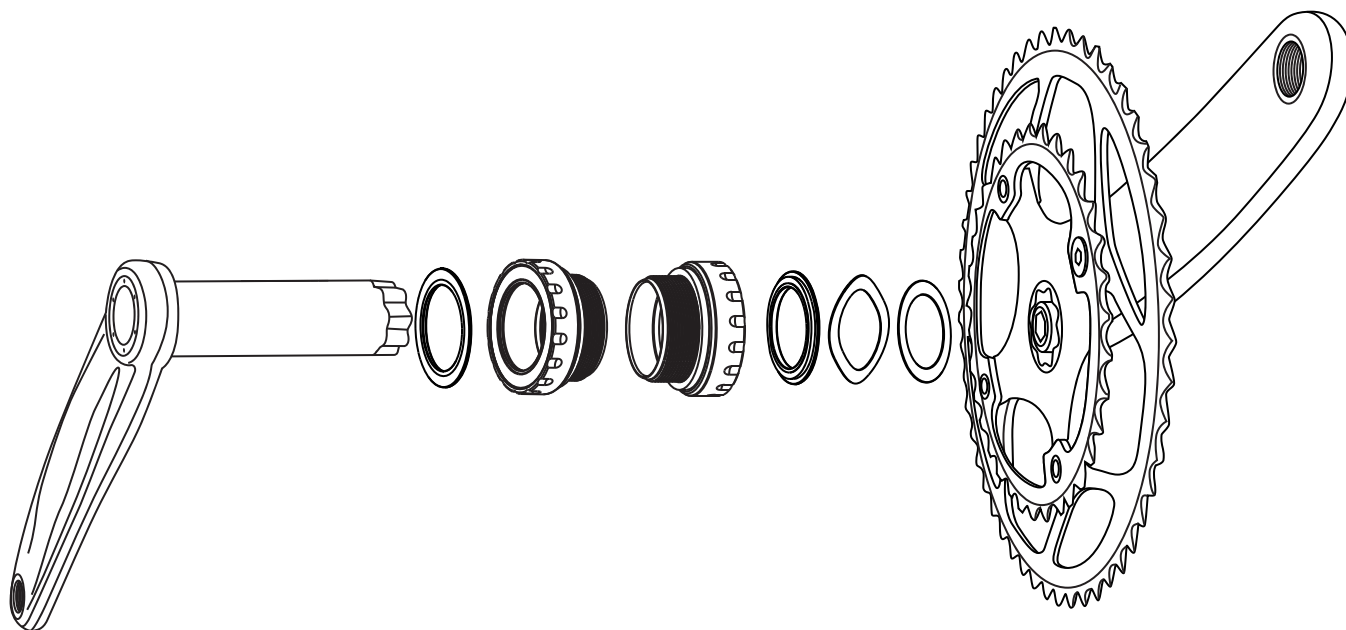


No.	Part Number	Description
-----	-------------	-------------

1	11.6518.007.000	Stem Service Course Bolt Kit Steel Black B1
1	11.6515.005.001	Stem Service Course SL Bolt Kit Ti Beyond Black A1/B1
2	11.6518.008.000	Stem Spacer Set Service Course SL-OS
3	11.6518.010.000	Stem Top Cap and Alloy Bolt Service Course SL Polished Black
3	11.6518.010.001	Stem Top Cap and Alloy Bolt Service Course SL Beyond Black
4	11.6518.009.000	Stem Top Cap and Alloy Bolt Service Course SL-OS Polished Black
5	11.6518.011.000	Stem Faceplate Service Course B1
5	11.6518.012.000	Stem Faceplate Service Course SL B1/Service Course SL-OS Polished Black
5	11.6518.012.001	Stem Faceplate Service Course SL B1/Service Course SL-OS Beyond Black
6	11.6618.011.000	Vuka Stealth T25 2-sided Wrench



No.	Part Number	Description
1	11.6515.005.001	Stem Service Course SL Bolt Kit Ti Beyond Black
1	11.6515.006.000	Stem Service Course Bolt Kit Steel Silver
2	11.6515.007.000	Stem Service Course SL Face Plate/Seatpostacer Shiny Black
2	11.6515.008.000	Stem Service Course Face Plate Black
3	11.6618.011.000	Vuka Stealth T25 2-sided Wrench



No.	Part Number	Description
-----	-------------	-------------

ns	14.6100.001.000	Zipp Bottom Bracket Wrench
----	-----------------	----------------------------

www.sram.com

world headquarters
SRAM corporation
1000 w. fulton market
chicago, il 60607
phone +1-312-664-8800
fax +1-312-664-8826

european headquarters
SRAM europe
basicweg 12-d
3821 br amersfoort
the netherlands
phone +31-33-450-6060
fax +31-33-457-0200

asian headquarters
SRAM taiwan
no. 1598-8 chung shan rd
shen kang hsiang, taichung
county road 49 taiwan r.o.c.
phone +886-4-2564-3678
fax +886-4-2561-3686