

SRAM

SPARE PARTS CATALOG



ZIPF

2022

SRAM® ORIGINAL PARTS

CAUTION:

The SRAM Warranty policy does not cover damages caused by the use of non-SRAM parts.

Use only SRAM parts with SRAM components.

Installation of parts and accessories not originally intended could result in less than optimal performance and/or injury.

For in-depth service information on SRAM products, refer to our website at www.sram.com/service. Contact your local SRAM distributor or dealer for ordering information.

Information contained in this publication is subject to change at any time without prior notice. Your product's appearance may vary from the diagrams contained in this catalog.

TABLE OF CONTENTS

ZIPP WHEELS

4,5	ZIPP HUB AND FREEHUB IDENTIFICATION
6,7	COGNITION RIM BRAKE
8,9	COGNITION DISC BRAKE
9	COGNITION AXLE END CAPS
10	ZR1 RIM
11	ZR1 DISC
12	77/177 RIM
13,14	77/177 DISC
14	76/77 & 176/177 AXLE END CAPS
15	76/176 RIM
16	76/176 DISC
17	88/188 V6, V7, V8, V9
18	30/60
19	82/182,202/282
20	SUPER 9 DISC 10 / 11 SPEED / TRACK
21/22	ZM1 (3ZERO MOTO)
23/24	SPOKES/NIPPLES/WASHERS
25	RIM DECALS 1/2 (all models till 2019)
26	RIM DECALS 2/2 (New 2020 models) & TUBELESS KITS
27	XDR driver body - end cap compatability chart

ZIPP BARS / STEMS / SEATPOSTS

28	VUKA CLIP B1
29	VUKA ALUMINA 22.2MM
30	VUKA AERO™ B2
31	VUKA AERO™ C1
32	VUKA STEALTH™
33/34	CARBON SEATPOSTS
35	ALUMINUM SEATPOSTS
36/37	CARBON STEMS
38	SERVICE COURSE SL / SL-OS B1

ZIPP HUB AND FREE HUB IDENTIFICATION

ZIPP ZR1

Zipp ZR1 hubs are introduced in May 2020, as the standard hub for all Firecrest wheels. Engineered in our German Design Center, those hubs offer greater durability thanks to a new sealing design that protects the bearings. A whole new driver mechanism also increases engagement time, to create a faster, more responsive ride. Those new hubs exist in rim or disc brake.

ZIPP Cognition NSW Front and Rear Hubs

Zipp introduced the Cognition hubset along with the 303, 404, and 808 NSW wheelsets. The rear wheel utilizes a star-flanged design for straight pull spokes. The rear hub utilizes an Axial Clutch mechanism with metal injection molded ratchet rings and magnets in place of the typical pawl and spring system. Cognition hubs are compatible with SRAM, Campagnolo, and XDR driver bodies.

Zipp Cognition DB hubs is our disc brake solution for all NSW wheels, first introduced on 454 NSW DB. This hub utilizes the same Axial Clutch technology as its rim brake counterpart in a hub shell designed for j-bend spokes and a center locking brake interface. End caps and driver bodies can be exchanged, so this hub is compatible with all existing axle or drivetrain configuration.

ZIPP 76/176 Hubs

76/176 hubs are specifically designed for our value oriented Zipp 302 wheels. Those hubs use the same internal parts as our 77/177 hubs, and will therefore offer the same reliable, proven performance. The hub shell of 76/176 hubs is straightforward, with flanges for j-bend spokes.

76D/176D hubs are used on the Zipp 302 disc brake wheels. The hubs are built around the 77D/177D hub mechanism. End caps and driver bodies can be switched to match modern bikes configurations. Hub shells designed for j-bend spokes and a center locking brake interface.

ZIPP 88/188 V10 Hubs

We introduced the 88/188 V10 hub along with the 404 Firestrike wheel set. This wheel came with ceramic bearings and has slotted spoke holes on machined flanges. This hub was made for rim brake only, not offered in a disc brake platform.

ZIPP 77/177 - Rim Brake Hubs

This hub was designed for rim brake use on the 30 Course, 202 Tubular, and 202, 303, 404, and 808 Firecrest Carbon Clinchers. The hub shell utilizes a star-flanged design for straight pull spokes.

ZIPP 77D/177D

These hubs are designed for disc brake use on the 30 Course, 202 Firecrest, 303 Firecrest, 404 Firecrest, & 808 Firecrest. The 77D and 177D have machined hub flanges for straight pull spokes, and the axle end caps on the hub's axle are interchangeable with different wheel spacings and wheel attachment systems, including quick-release, 12x100, 15x100, & 9x100 RWS Thru Bolt for the front, and 12x135, 12x142, & 10x135 RWS Thru Bolt for the rear.

88/188 Disc Brake Hub (July 2013 -)

We introduced the 303 Firecrest disc brake wheel set with new front and rear black Zipp disc brake hubs, 24/24 spokes 100mm front and 135mm rear spacing. Note the spoke angles for disc brake wheels are different (lower angles) than regular road brake wheels and the lacing pattern is 1x, 1x front and 2x,2x on the rear.

2014 ZIPP 88/188 V9 Hubs

A completely new design, these hubs have a 17mm axle, pawls with individual leaf springs, 32 teeth ratchet ring, slotted flanges, aero clinch nuts, internal seals and lateral play adjustment. Front end caps are smoke colored with blue/smoke or red rear end caps. Wheel lacing is reversed with 2x drive and radial non-drive spoke pattern. Free hubs are NOT inter-changeable and require a new axle and separate conversion kit that includes spacers, seal and matching end cap. Maintenance instructions are available including exploded diagrams. The rear end caps on Shimano hubs changed from smoke to red in November 2009.



ZIPP HUB AND FREE HUB IDENTIFICATION

In May 2010 the 88 front hub spoke retention ring and clinch nut were altered. The spoke retention ring was made thinner, clinch nut diameter enlarged and the boss shape changed.

2013 ZIPP V8 188 Hub for 11 Speed

In October 2012 a new rear hub version was released to accommodate Shimano 11 and Campagnolo 11 speed drive chains. The 188 V7 (2012 gray and black) rear hub was modified as follows:

1. Overall drop to drop length (OLD) is increased by 0.8mm
2. Axle internal diameter is reduced by 1.0mm (walls are thickened to increase axle strength) (left in image)
3. Non-drive side rear end cap is reduced by 1mm, 'O' ring removed and colored black (left in image)
4. New 11 speed free hub with laser etching, serial number and shim for 10 speed

The V8 88/188 hubs are only available in black, they build a rear wheel which is more durable and marginally stiffer at the same spoke tension. The axle, end cap and free hub are not compatible with the older hub versions (2009-2012). A conversion service is available for only for 2012 188 hubs (gray or black) from Zipp certified wheel builders. The conversion kit is sold after-market.

November 2012 –

Revised V6 black rear axle with thicker wall and anodized treatment replaces original gray V6 axle. Note the revised axle uses the black end cap and not the red or blue.

October 2011 88/188 V7 Hubs

Re-design (V7) and improve the current 88/188 hubs with canted, rear, non-drive flange and rear axle changed to accommodate 7.5mm wider non-drive bearing location. Hubs are offered in two color options - falcon gray and beyond black across the wheel line, (October 2011).

These changes improve rear 188 hub axle durability and allow 6% stiffer wheels to be built with the same spoke tension. On the 88 front hub, the only change is the color options – the silver and ZedTech hub 88/188 hub versions are discontinued.

Note: the rear 188 hub shell and axle are NOT compatible with the earlier silver version. The bearings (61803) end caps and seals remain unchanged.

Free hubs Zipp 188 hubs 2009 –

Major changes in pawl design and shape. Each pawl now has its own leaf spring. Pawl socket ring is scalloped, seal is black. These free hubs are NOT interchangeable with earlier 182 or 208 models and are only sold in a conversion kit with seals, shims and endcaps. Note the 61803 bearings to accommodate the larger 17mm axle.

July 2012 - Campagnolo 11 Electronic

To accommodate Campy 11 electronic, we re-machined blue anodized Campagnolo free hubs to remove a small notch at the start of the splines. During July 2012 all available 182 and 188 free hubs were reworked. Going forward new blue Campy 11 free hubs will be fully anodized with no silver markings.

2013 Zipp 188 V8 Free Hub for 11 Speed

1.85mm spacer needed to run 10 speed with 2013 V8 11 speed free hub

The 11 speed free hub is not compatible with the previous version (V7) of the 188 free hub. It is recognized by the yellow laser etching and is assigned an individual serial number. This free hub must be used with the 2013 black axle and non-drive side end-cap. To run 10 speed with this free hub, you will need the extra spacer (supplied with new wheels and conversions)

ZIPP 182 Rear and 82 Front Hubs (2006-2008)

These hubs are distinguished from the 202/84 model by brightly colored free hub bodies (Shimano red, Campagnolo blue), a plastic retaining ring behind the carbon hub caps, a reduction in weight (30g), redesigned pawl springs and an increase in the rear ear flange dimensions (52mm).

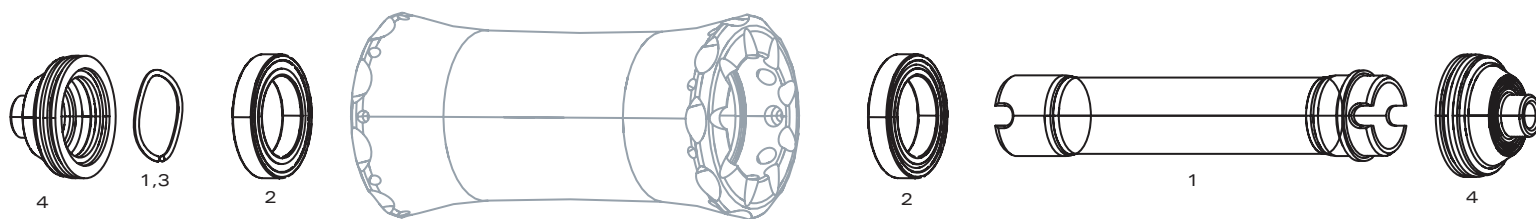
Free hubs Zipp 182 - 208 hubs 2005-2008

Machined and forged / Shimano red Campagnolo blue

The difference between machined and forged Shimano free hub bodies is a dull, deeper maroon, rougher surface finish and a scribed ring 1/3 towards the seal between the body and the red pawl carrier in the forged body. Since mid year 2005, Shimano free hubs are red and Campagnolo are blue. These bodies have 2 x 61082 bearings and a red seal between the pawl carrier and the main body.

Return to
Index

ZIPP HUBS - COGNITION RIM BRAKE FRONT



NO.	PART NUMBER	DESCRIPTION
1	11.2018.032.000	WHEEL AXLE FRONT ZIPP COGNITION NSW WITH WAVE SPRING
2	11.2018.032.001	WHEEL BEARING KIT FRONT ZIPP 76/77/COGNITION NSW 61803 QTY 2
3	11.2018.032.003	WHEEL WAVE SPRING ZIPP COGNITION NSW AXLE
4	11.2018.033.000	WHEEL AXLE END CAP ASSEMBLY FRONT ZIPP COGNITION NSW HUB

ZIPP HUBS - COGNITION RIM BRAKE REAR PAGE 1 OF 2



NO.	PART NUMBER	DESCRIPTION
GENERATION 1		
1	11.2018.032.002	WHEEL AXLE REAR ZIPP COGNITION NSW WITH BEARINGS
2	11.2018.033.001	WHEEL AXLE END CAP ASSEMBLY NON DRIVE REAR ZIPP COGNITION NSW
3	11.2018.033.002	WHEEL AXLE END CAP ASSEMBLY DRIVE SIDE REAR ZIPP COGNITION NSW SRAM
3	11.2018.033.003	WHEEL AXLE END CAP ASSEMBLY DRIVE SIDE REAR ZIPP COGNITION NSW XDR/CAMPAGNOLO GEN 1 AND XDR GEN2
4	11.2018.034.000	WHEEL FREEHUB KIT COGNITION NSW 11 SPEED SRAM
ns	11.2018.034.001	WHEEL FREEHUB KIT COGNITION NSW 11-SPEED CAMPAGNOLO
5	11.2018.034.002	WHEEL FREEHUB KIT COGNITION NSW XDR
6	11.2018.035.000	WHEEL CLUTCH ASSEMBLY AND SEAL FOR REAR ZIPP COGNITION NSW
7	11.2018.035.001	WHEEL MAGNET KIT INNER AND OUTER FOR REAR ZIPP COGNITION NSW
8	11.2018.037.000	WHEEL SEAL CAP AND V-RING REAR ZIPP COGNITION NSW
ns	00.1918.177.050	BEARING PRESS TOOL 6804, ZIPP COGNITION REAR HUB

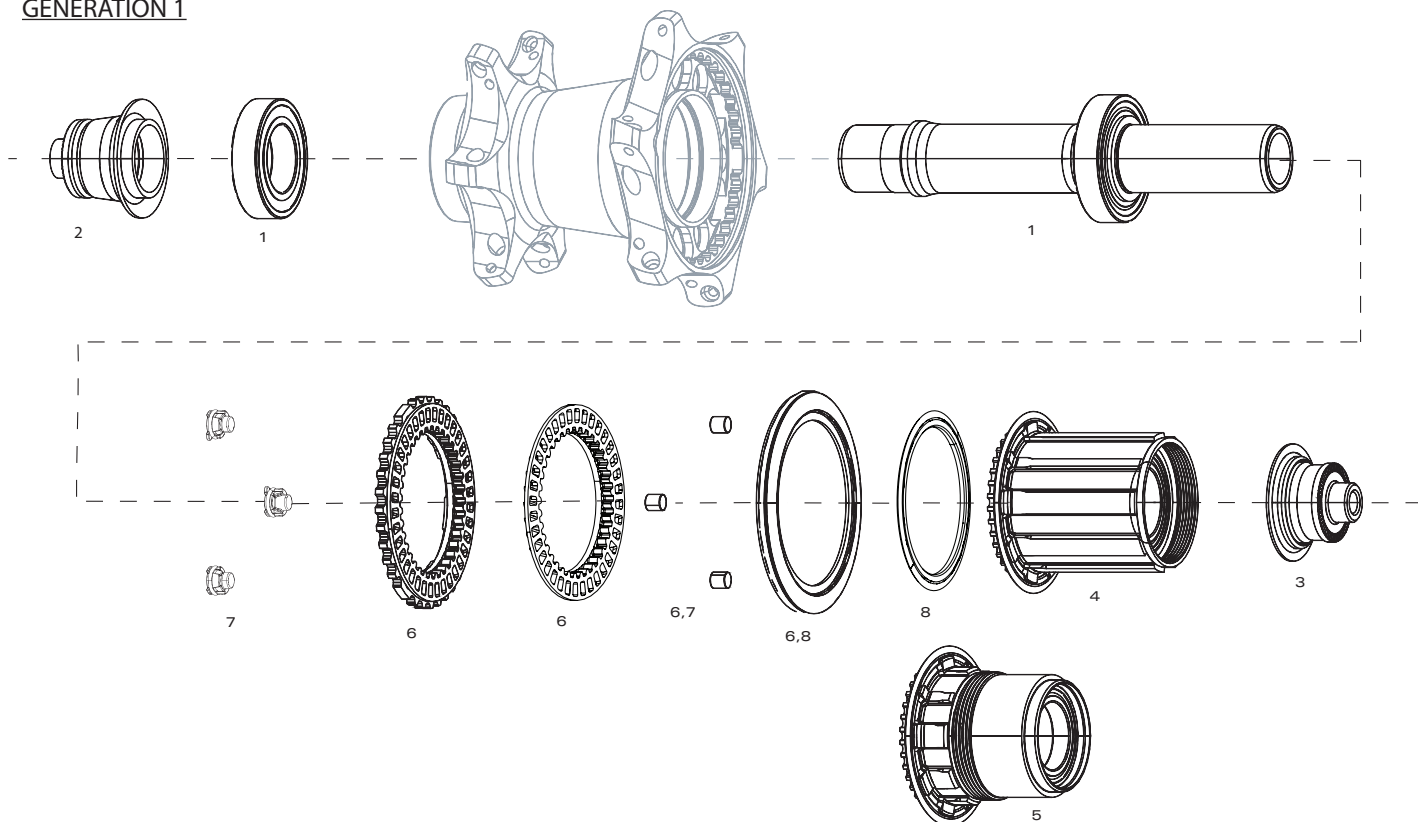
GENERATION 2 - Cognition rim brake rear hubs starting as of serial number 21P81803697

1	11.2018.056.000	WHEEL AXLE REAR ZIPP COGNITION NSW WITH BEARINGS GENERATION 2
2	11.2018.057.000	WHEEL AXLE END CAP ASSEMBLY NON DRIVE REAR ZIPP COGNITION NSW GENERATION 2
3	11.2018.051.000	WHEEL FREEHUB KIT COGNITION NSW 11-SPEED SRAM DISC BRAKE / RIM BRAKE GENERATION 2
ns	11.2018.051.001	WHEEL FREEHUB KIT COGNITION NSW 11-SPEED CAMPAGNOLO DISC BRAKE / RIM BRAKE GENERATION 2
4	11.2018.051.002	WHEEL FREEHUB KIT COGNITION NSW XDR DISC BRAKE / RIM BRAKE GENERATION 2
5	11.2018.035.001	WHEEL MAGNET KIT INNER AND OUTER FOR REAR ZIPP COGNITION NSW
6	11.2018.053.000	WHEEL CLUTCH ASSEMBLY AND SEAL FOR REAR ZIPP COGNITION NSW DISC BRAKE / RIM BRAKE GENERATION 2
7	11.2018.033.002	WHEEL AXLE END CAP ASSEMBLY DRIVE SIDE REAR ZIPP COGNITION NSW SRAM
ns	11.2018.033.003	WHEEL AXLE END CAP ASSEMBLY DRIVE SIDE REAR ZIPP COGNITION NSW XD/CAMPAGNOLO GEN1 AND XDR GEN2
ns	11.2018.058.000	WHEEL AXLE END CAP ASSEMBLY DRIVE SIDE REAR ZIPP COGNITION NSW CAMPAGNOLO
8	11.2018.032.003	WHEEL WAVE SPRING ZIPP COGNITION NSW AXLE
ns	00.1918.177.060	BEARING PRESS TOOL 61903, ZIPP COGNITION DISC BRAKE REAR HUB



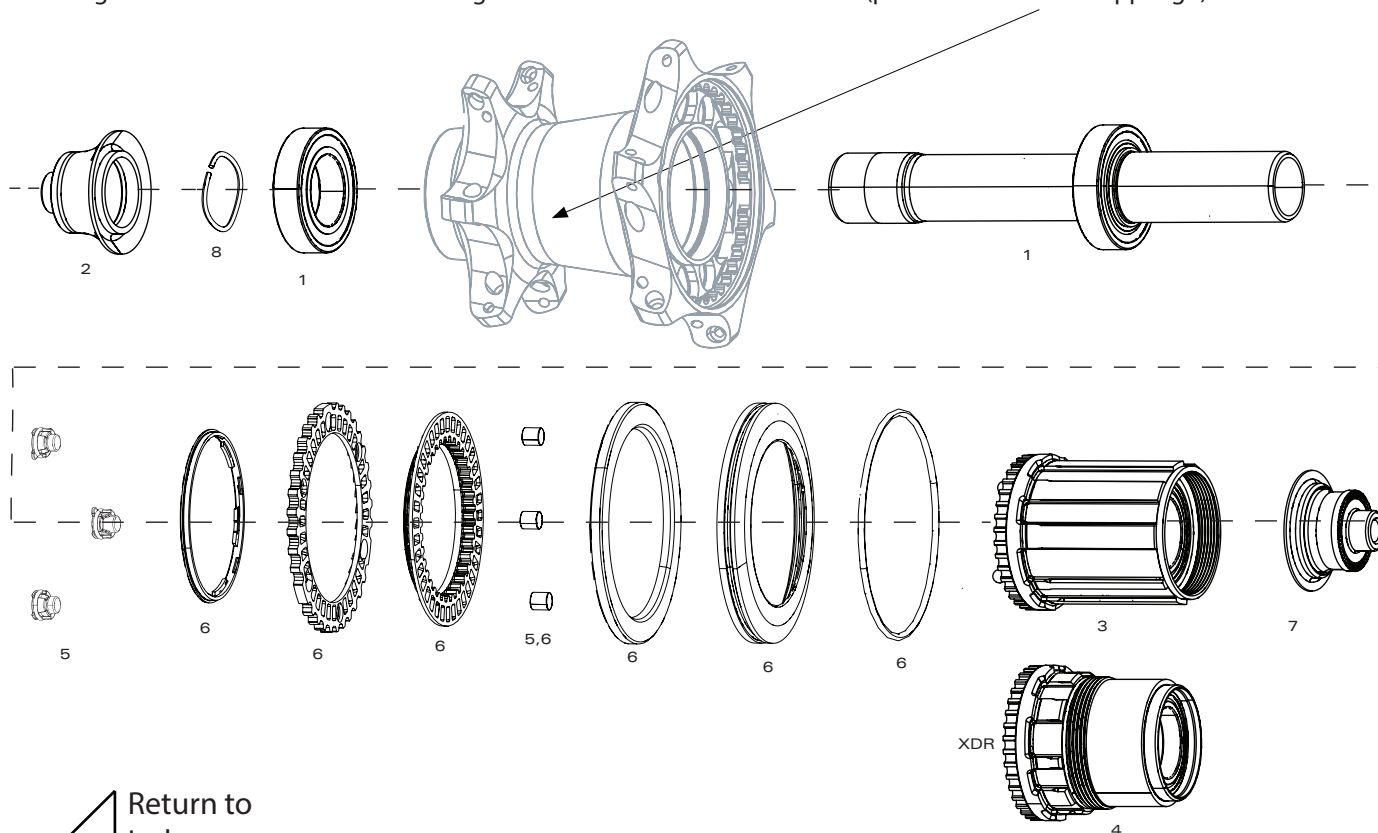


GENERATION 1

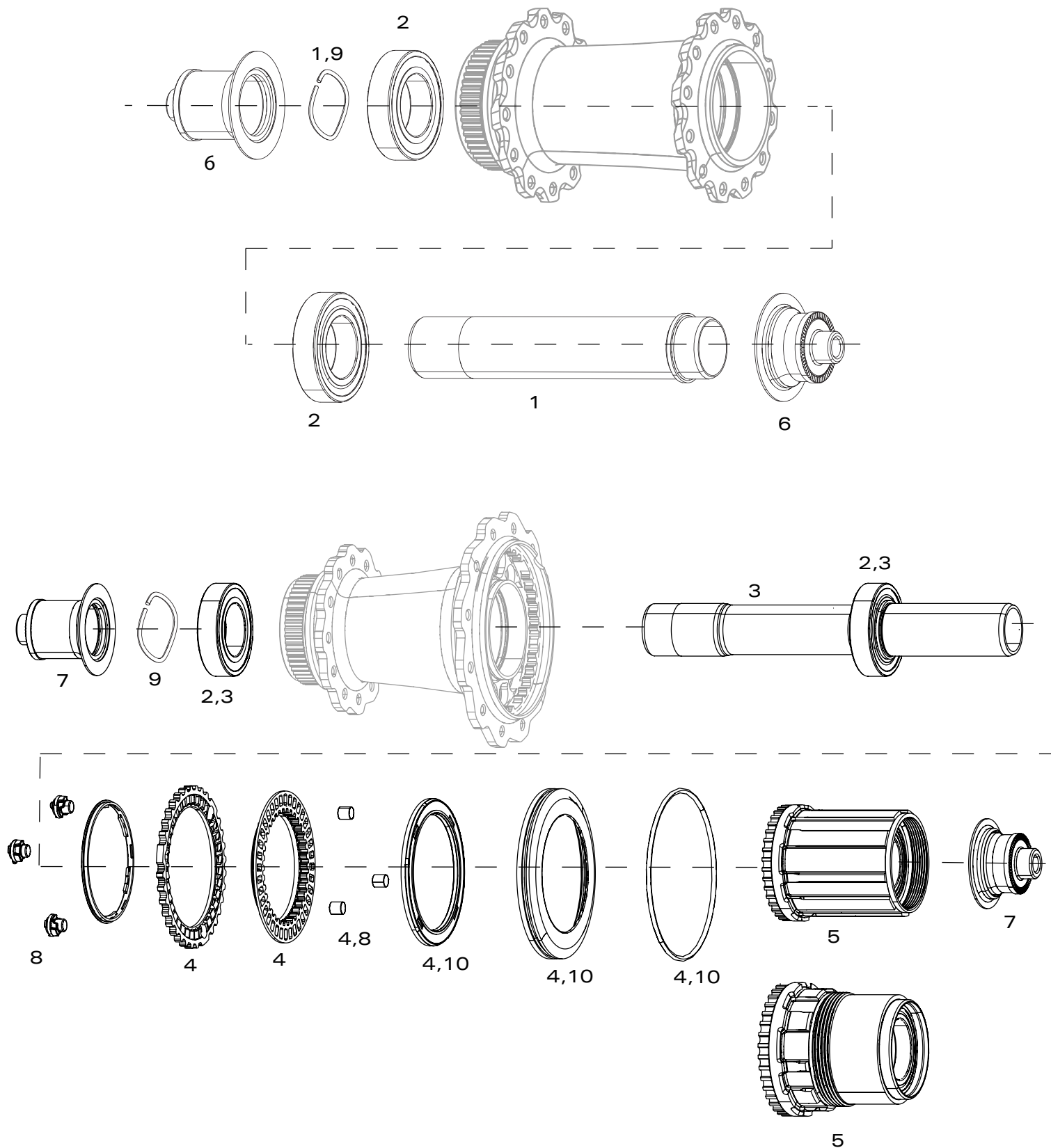


GENERATION 2

Cognition rim brake rear hubs starting as of serial number 21P81803697 (printed at hub near Zipp logo)



Return to
Index



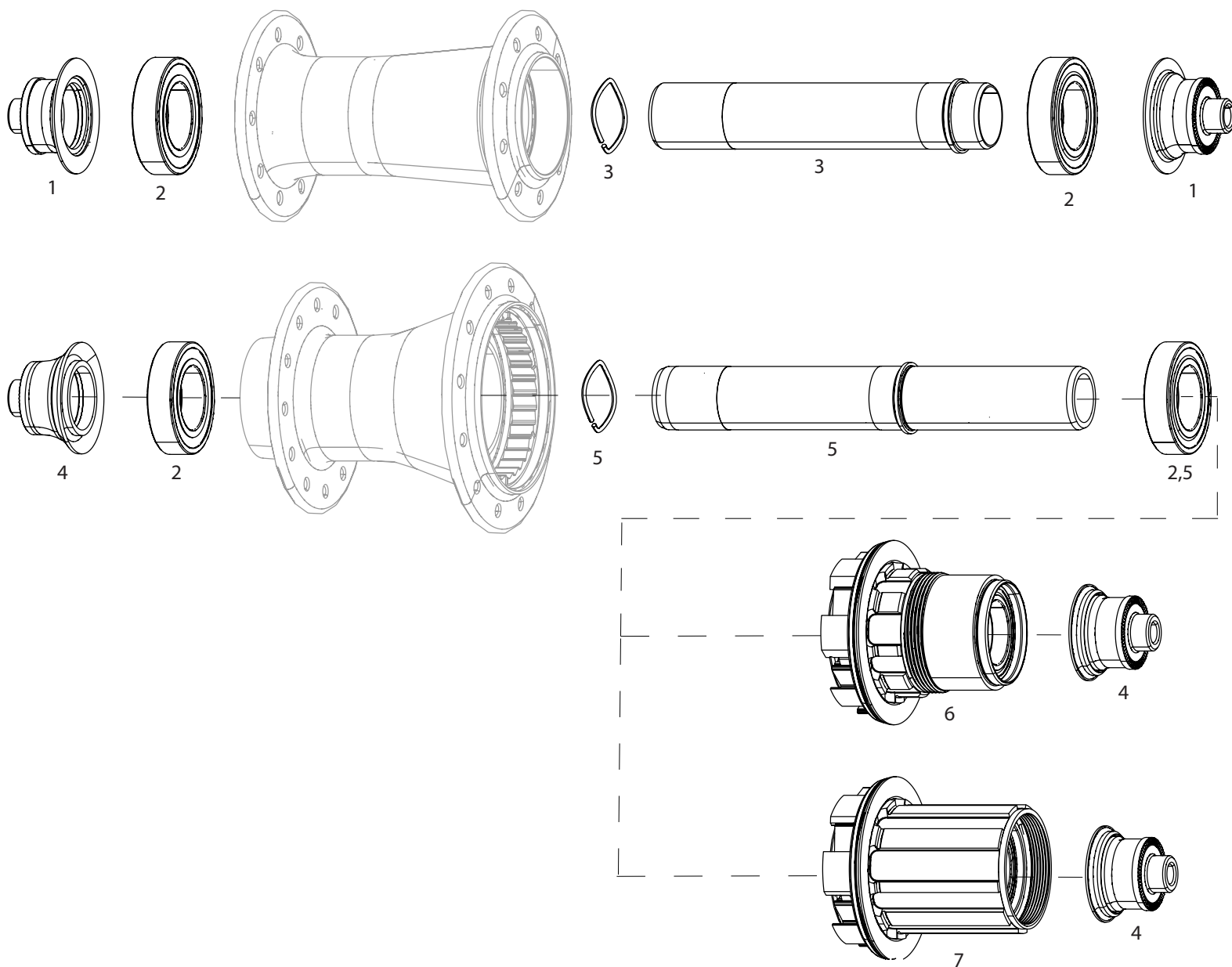


NO.	PART NUMBER	DESCRIPTION
1	11.2018.052.000	WHEEL AXLE FRONT ZIPP COGNITION DISC BRAKE NSW WITH WAVE SPRING
2	11.2018.052.002	WHEEL HUB BEARINGS COGNITION DISC BRAKE NSW (FRONT OR REAR, 1 PAIR)
3	11.2018.052.001	WHEEL AXLE REAR ZIPP COGNITION DISC BRAKE NSW WITH BEARINGS
4	11.2018.053.000	WHEEL CLUTCH ASSEMBLY AND SEAL FOR REAR ZIPP COGNITION NSW DISC BRAKE / RIM BRAKE GENERATION 2
5	11.2018.051.000	WHEEL FREEHUB KIT COGNITION NSW 11-SPEED SRAM DISC BRAKE / RIM BRAKE GENERATION 2
5	11.2018.051.001	WHEEL FREEHUB KIT COGNITION NSW 11-SPEED CAMPAGNOLO DISC BRAKE / RIM BRAKE GENERATION 2
5	11.2018.051.002	WHEEL FREEHUB KIT COGNITION NSW XDR DISC BRAKE / RIM BRAKE GENERATION 2
8	11.2018.035.001	WHEEL MAGNET KIT INNER AND OUTER FOR REAR ZIPP COGNITION NSW
9	11.2018.032.003	WHEEL WAVE SPRING ZIPP COGNITION NSW AXLE
10	11.2018.055.000	WHEEL SEAL CAP AND O-RING REAR ZIPP COGNITION DISC NSW
ns	00.1918.177.060	BEARING PRESS TOOL 61903, ZIPP COGNITION DISC BRAKE REAR HUB
ns	11.2018.063.001	HUB CENTERLOCK ROTOR DISC LOCKRING BLACK ZIPP LOGO QTY 1
ns	11.2018.063.002	HUB CENTERLOCK ROTOR DISC LOCKRING BLACK ZIPP LOGO (FOR ROTORS UP TO 160MM) QTY 1

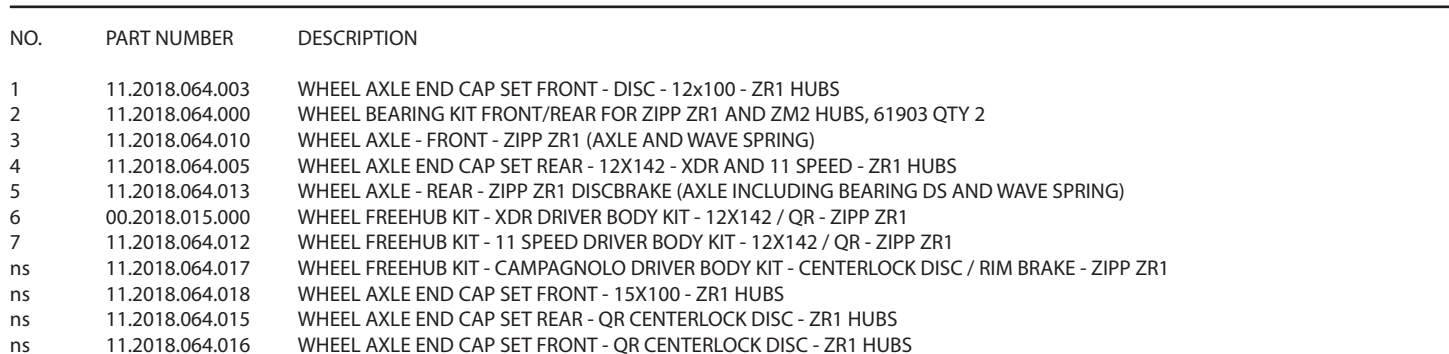
AXLE END CAPS

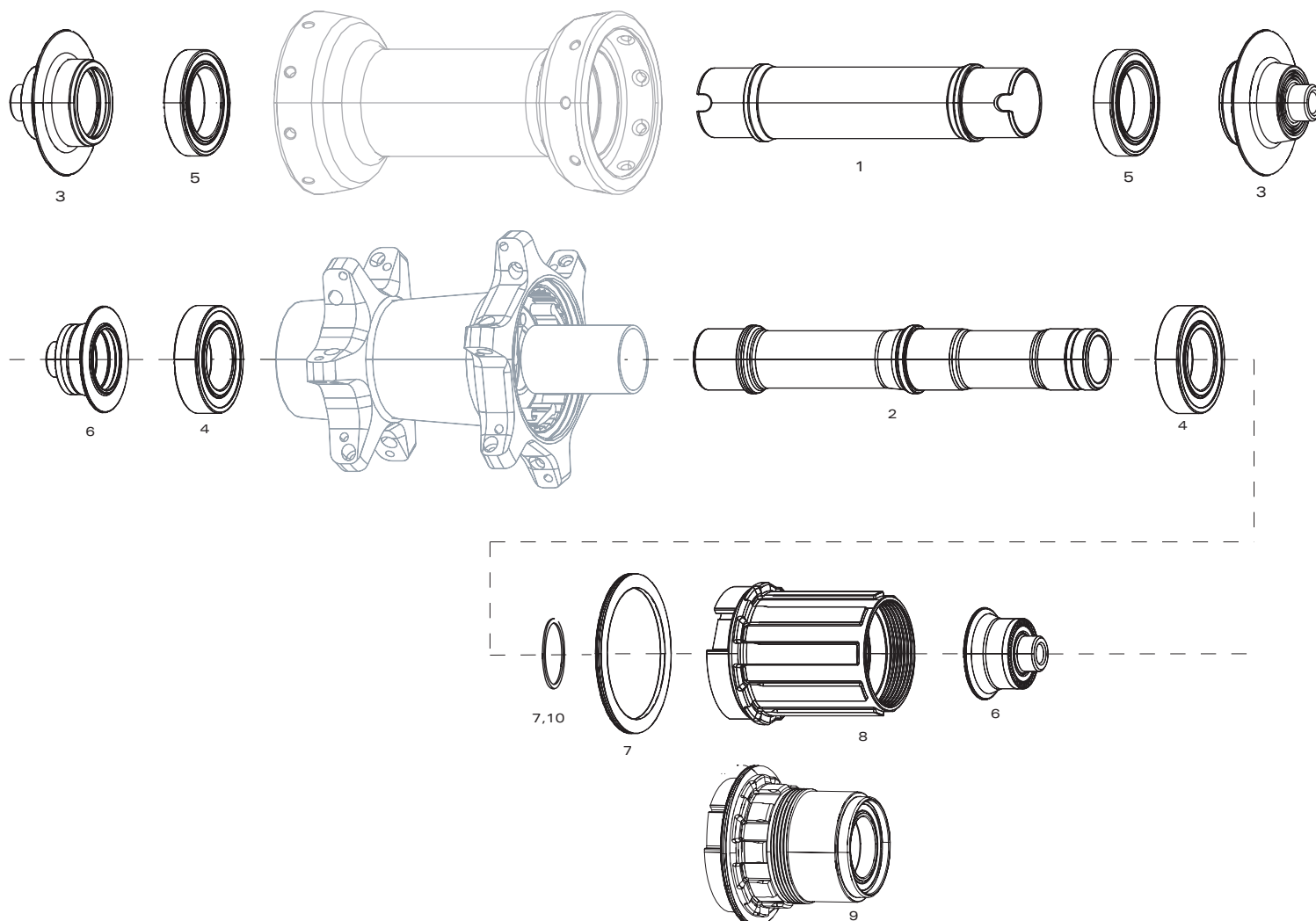
NO.	PART NUMBER	DESCRIPTION
6	11.2018.048.000	WHEEL AXLE END CAP SET FRONT ZIPP COGNITION CENTER LOCKING DISC BRAKE QUICK RELEASE
6	11.2018.049.000	WHEEL AXLE END CAP SET FRONT ZIPP COGNITION CENTER LOCKING DISC BRAKE THRU AXLE 12X100
6	11.2018.050.000	WHEEL AXLE END CAP SET FRONT ZIPP COGNITION CENTER LOCKING DISC BRAKE THRU AXLE 15X100
7	11.2018.048.010	WHEEL AXLE END CAP SET REAR ZIPP COGNITION CENTER LOCKING DISC BRAKE QUICK RELEASE SRAM
7	11.2018.048.020	WHEEL AXLE END CAP SET REAR ZIPP COGNITION CENTER LOCKING QUICK RELEASE CAMPY DISC BRAKE / RIM BRAKE GENERATION 2
7	11.2018.048.030	WHEEL AXLE END CAP SET REAR ZIPP COGNITION CENTER LOCKING DISC BRAKE QUICK RELEASE XDR
ns	11.2018.049.010	WHEEL AXLE END CAP SET REAR ZIPP COGNITION CENTER LOCKING DISC BRAKE THRU AXLE 12X135 SRAM
ns	11.2018.049.020	WHEEL AXLE END CAP SET REAR ZIPP COGNITION CENTER LOCKING DISC BRAKE THRU AXLE 12X142 SRAM
ns	11.2018.049.030	WHEEL AXLE END CAP SET REAR ZIPP COGNITION CENTER LOCKING DISC BRAKE THRU AXLE 12X135 CAMPY
ns	11.2018.049.040	WHEEL AXLE END CAP SET REAR ZIPP COGNITION CENTER LOCKING DISC BRAKE THRU AXLE 12X142 CAMPY
ns	11.2018.049.050	WHEEL AXLE END CAP SET REAR ZIPP COGNITION CENTER LOCKING DISC BRAKE THRU AXLE 12X135 XDR
ns	11.2018.049.060	WHEEL AXLE END CAP SET REAR ZIPP COGNITION CENTER LOCKING DISC BRAKE THRU AXLE 12X142 XDR

ZIPP HUBS - ZR1 RIM BRAKE

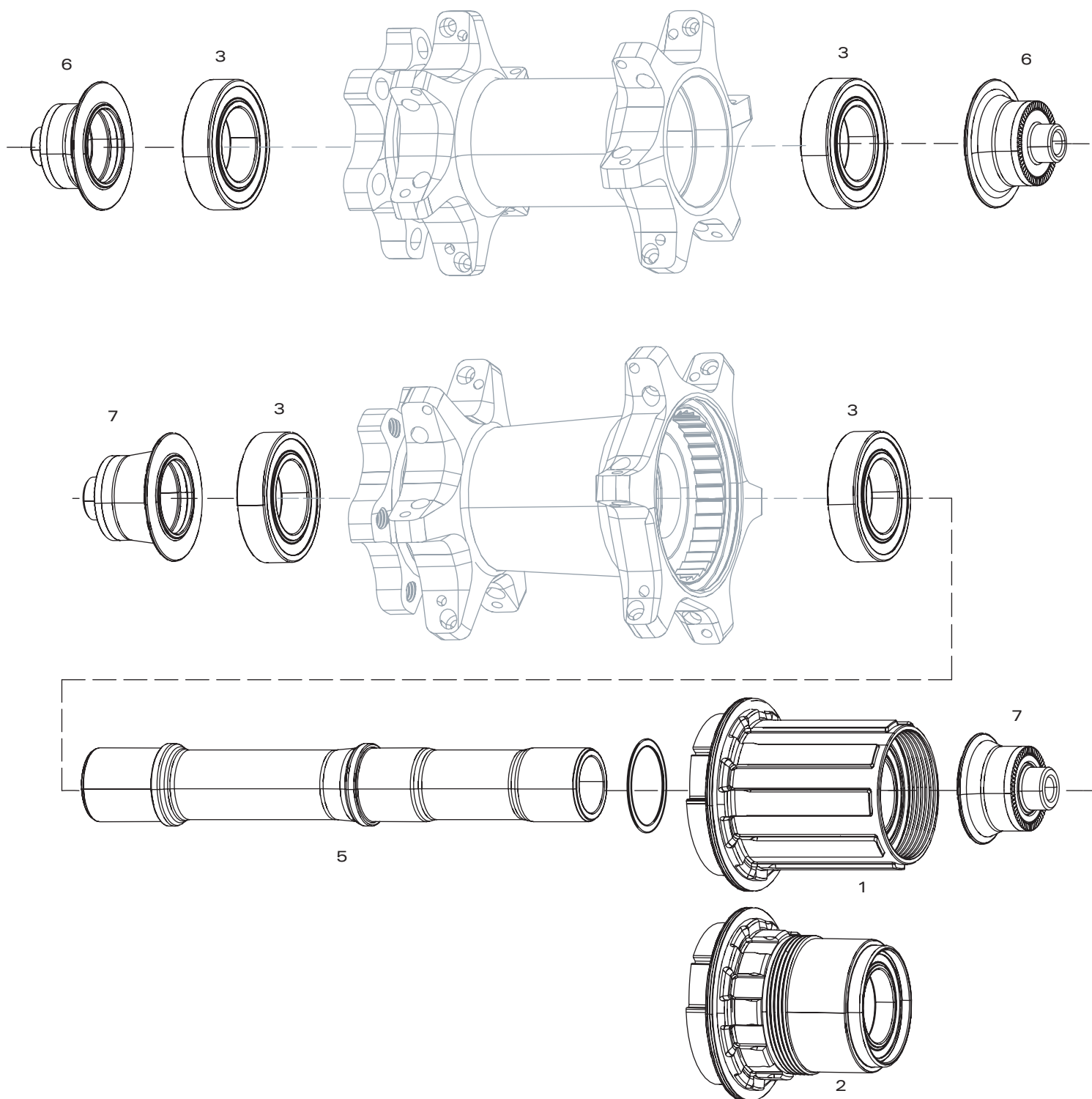


NO.	PART NUMBER	DESCRIPTION
1	11.2018.064.004	WHEEL AXLE END CAP SET FRONT - RIM BRAKE QR - ZR1 HUBS
ns	11.2018.064.018	WHEEL AXLE END CAP SET FRONT - 15X100 - ZR1 HUBS
2	11.2018.064.000	WHEEL BEARING KIT FRONT/REAR FOR ZIPP ZR1 AND ZM2 HUBS, 61903 QTY 2
3	11.2018.064.010	WHEEL AXLE - FRONT - ZIPP ZR1 (AXLE AND WAVE SPRING)
4	11.2018.064.006	WHEEL AXLE END CAP SET REAR - QR RB - XDR AND 11 SPEED - ZR1 HUBS
5	11.2018.064.014	WHEEL AXLE - REAR - ZIPP ZR2 RIM BRAKE (AXLE INCLUDING BEARING DS AND WAVE SPRING)
6	00.2018.015.000	WHEEL FREEHUB KIT - XDR DRIVER BODY KIT - 12X142 / QR - ZIPP ZR1
7	11.2018.064.012	WHEEL FREEHUB KIT - 11 SPEED DRIVER BODY KIT - 12X142 / QR - ZIPP ZR1
ns	11.2018.064.017	WHEEL FREEHUB KIT - CAMPAGNOLO DRIVER BODY KIT - CENTERLOCK DISC / RIM BRAKE - ZIPP ZR1





NO.	PART NUMBER	DESCRIPTION
1	11.1918.054.000	WHEEL AXLE FRONT ZIPP 76/77 RIM BRAKE (AXLE ONLY)
2	11.1918.054.001	WHEEL AXLE REAR ZIPP 176/177 RIM BRAKE (AXLE ONLY)
3	11.1918.047.001	WHEEL AXLE END CAP ZIPP 76/77 FRONT QUICK RELEASE
4	11.2018.061.003	WHEEL BEARING KIT FRONT/REAR 76/77 176/177 DISC, REAR 176/177 RIM, 61903 QTY 2
5	11.2018.032.001	WHEEL HUB BEARINGS FRONT ZIPP 76/77/COGNITION NSW 61803 QTY 2
6	11.1918.048.001	WHEEL AXLE END CAP REAR ZIPP 176/177 RIM BRAKE REAR 11-SPEED QR (CAMP, SRAM/SHIMANO, XDR)
7	11.1918.052.000	WHEEL SEAL AND SHIM FREEHUB BODY ZIPP 177 QTY 1
ns	11.2018.036.000	WHEEL SPRING AND PAWL SET FOR ZIPP 177 REAR HUB QTY 4
8	11.2018.061.000	WHEEL FREEHUB KIT SS 176/177 11 SPEED SRAM
ns	11.2018.061.001	WHEEL FREEHUB KIT SS 176/177 11 SPEED CAMPAGNOLO
9	11.2018.062.000	WHEEL FREEHUB KIT SS 176/177 SRAM XDR
10	11.2018.038.000	WHEEL FREEHUB BODY SHIM ZIPP 177 QTY 1



Notes:

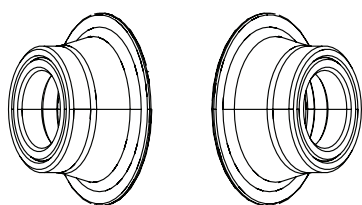
Conversion Caps and Axle End Caps, Please see page 14

Return to
Index

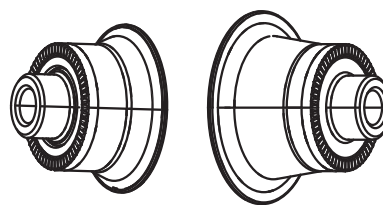


NO.	PART NUMBER	DESCRIPTION
1	11.2018.061.000	WHEEL FREEHUB KIT SS 176/177 11 SPEED SRAM
ns	11.2018.061.001	WHEEL FREEHUB KIT SS 176/177 11 SPEED CAMPAGNOLO
2	11.2018.062.000	WHEEL FREEHUB KIT SS 176/177 SRAM XDR
3	11.2018.061.003	WHEEL BEARING KIT FRONT/REAR 76/77 176/177 DISC, REAR 176/177 RIM, 61903 QTY 2
ns	11.1918.052.000	WHEEL SEAL AND SHIM FREEHUB BODY ZIPP 177 QTY 1
5	11.1918.053.001	WHEEL AXLE REAR ZIPP 177D DISC BRAKE (AXLE ONLY)
ns	11.2018.036.000	WHEEL SPRING AND PAWL SET FOR ZIPP 177 REAR HUB QTY 4
6	11.1918.046.000	WHEEL CONVERSION CAPS 77DISC FRONT 100/12MM THRU AXLE
6	11.1918.046.001	WHEEL CONVERSION CAPS 77DISC FRONT 100/15MM THRU AXLE
7	11.1918.046.003	WHEEL CONVERSION CAPS 177DISC REAR, 12X142 THROUGH AXLE
7	11.1918.046.005	WHEEL CONVERSION CAPS ZIPP 177DISC REAR 135/10MM RWS THRU BOLT
7	11.1918.048.000	WHEEL AXLE END CAP REAR ZIPP 177 DISC BRAKE REAR 11 SPEED QR (CAMP, SRAM/SHIMANO, XDR)
ns	11.1918.047.000	WHEEL AXLE END CAP ZIPP 77DISC FRONT QUICK RELEASE

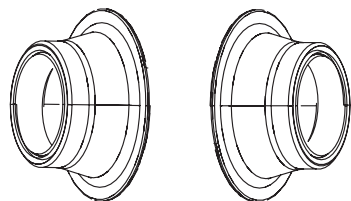
CONVERSION CAPS AND AXLE END CAPS



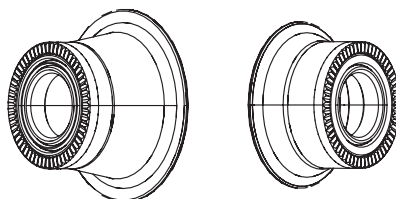
11.1918.046.000
Conversion Caps Wheel
Zipp 77Disc Front
100/12mm Thru Axle



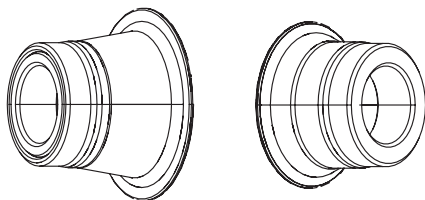
11.1918.048.000
WHEEL AXLE END CAP REAR ZIPP
177 DISC BRAKE REAR 11 SPEED
QR (CAMP, SRAM/SHIMANO,
XDR)



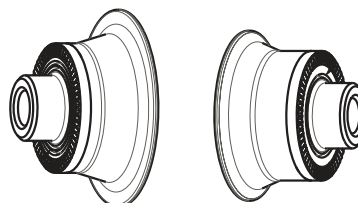
11.1918.046.001
Conversion Caps Wheel
Zipp 77Disc Front
100/15mm Thru Axle



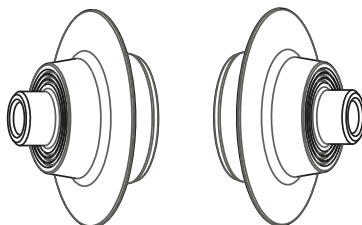
11.1918.046.005
Conversion Caps Wheel Zipp
177Disc Rear 135/10mm RWS
Thru Bolt



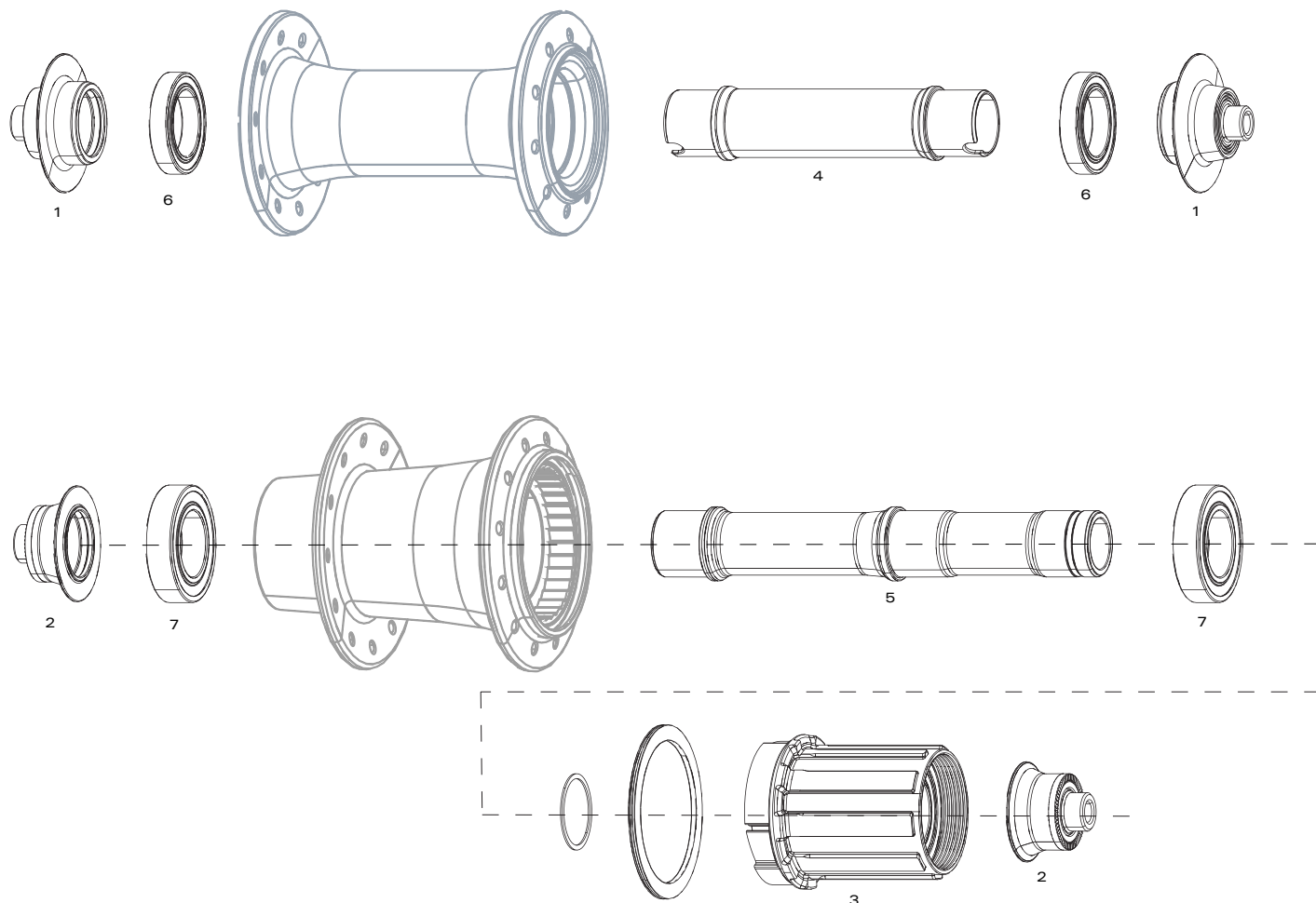
11.1918.046.003
Conversion Caps ZIPP 177DISC
Rear, 12x142 Through Axle



11.1918.048.001
WHEEL AXLE END CAP
REAR ZIPP 176/177 RIM
BRAKE REAR 11-SPEED QR
(CAMP, SRAM/SHIMANO,
XDR)

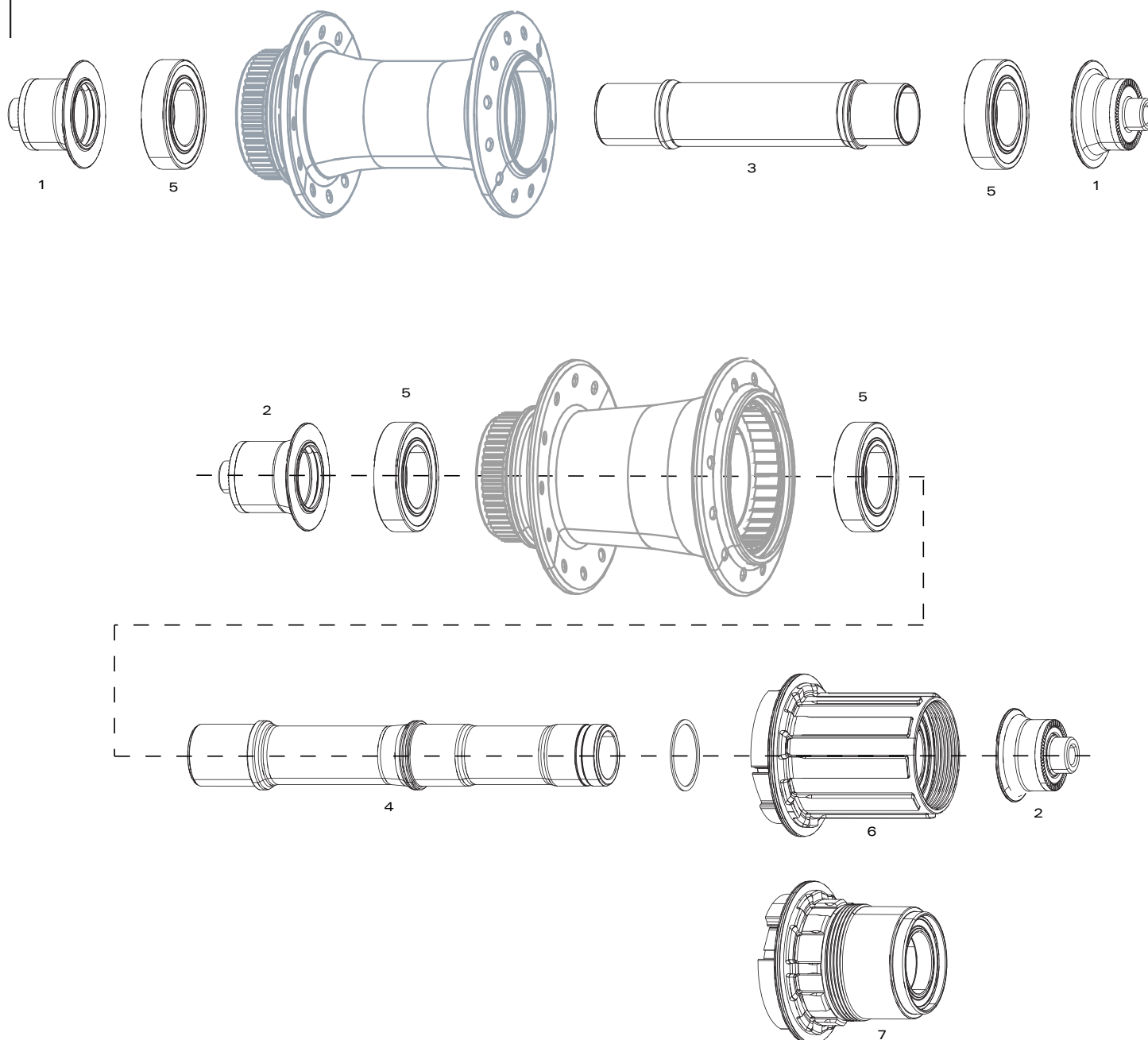


11.1918.047.001
Axle End Cap Zipp 76/77 Front
Quick Release



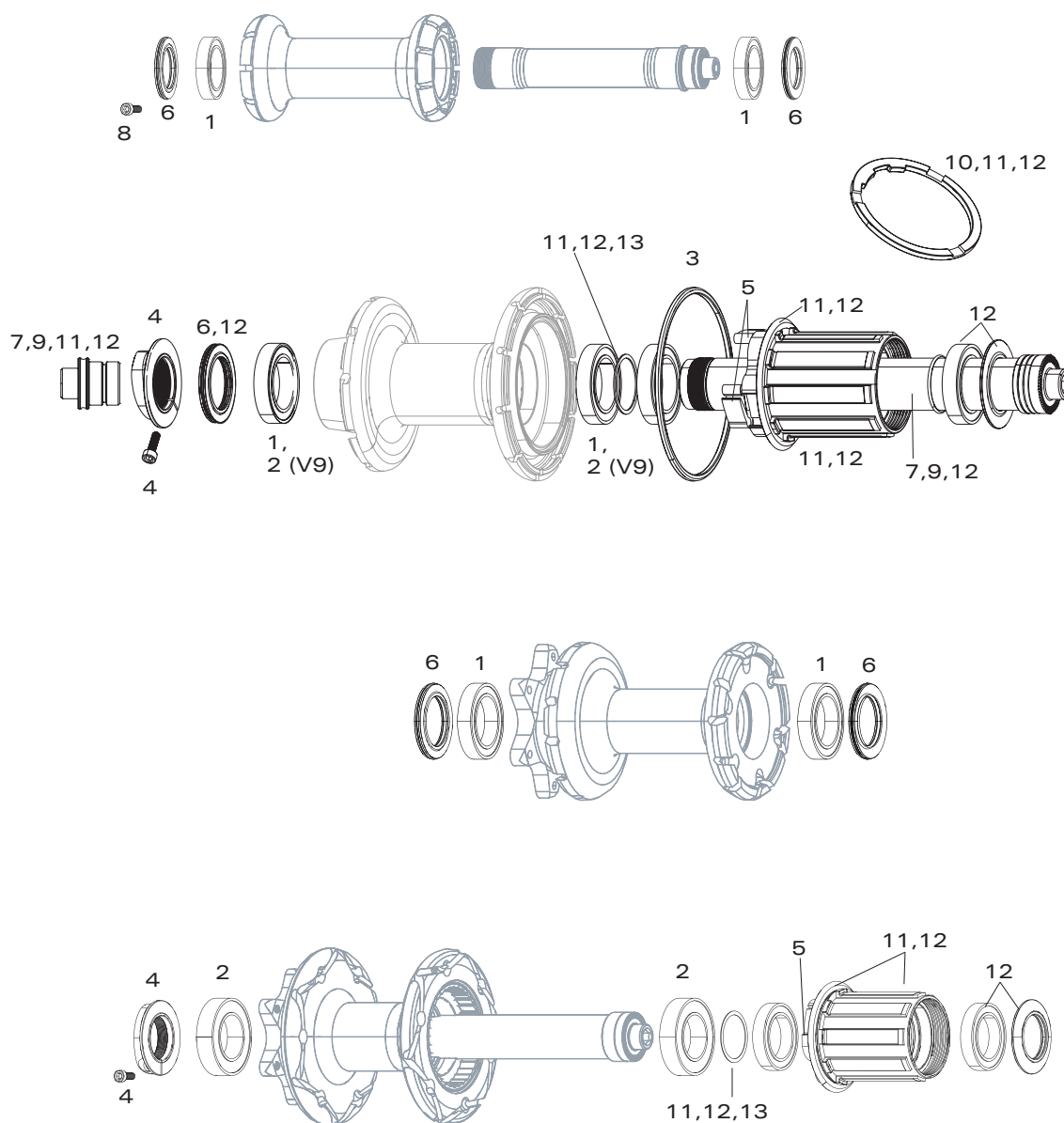
NO.	PART NUMBER	DESCRIPTION
1	11.1918.047.001	WHEEL AXLE END CAP ZIPP 76/77 FRONT QUICK RELEASE
2	11.1918.048.001	WHEEL AXLE END CAP REAR ZIPP 176/177 RIM BRAKE REAR 11-SPEED QR (CAMPA, SRAM/SHIMANO, XDR)
3	11.2018.061.000	WHEEL FREEHUB KIT SS 176/177 11 SPEED SRAM
ns.	11.2018.061.001	WHEEL FREEHUB KIT SS 176/177 11 SPEED CAMPAGNOLO
ns.	11.2018.062.000	WHEEL FREEHUB KIT SS 176/177 SRAM XDR
4	11.1918.054.000	WHEEL AXLE FRONT ZIPP 76/77 RIM BRAKE (AXLE ONLY)
5	11.1918.054.001	WHEEL AXLE REAR ZIPP 176/177 RIM BRAKE (AXLE ONLY)
6	11.2018.032.001	WHEEL HUB BEARINGS FRONT ZIPP 76/77/COGNITION NSW 61803 QTY 2
7	11.2018.061.003	WHEEL BEARING KIT FRONT/REAR 76/77 176/177 DISC, REAR 176/177 RIM, 61903 QTY 2

ZIPP HUBS - 76/176 DISC BRAKE

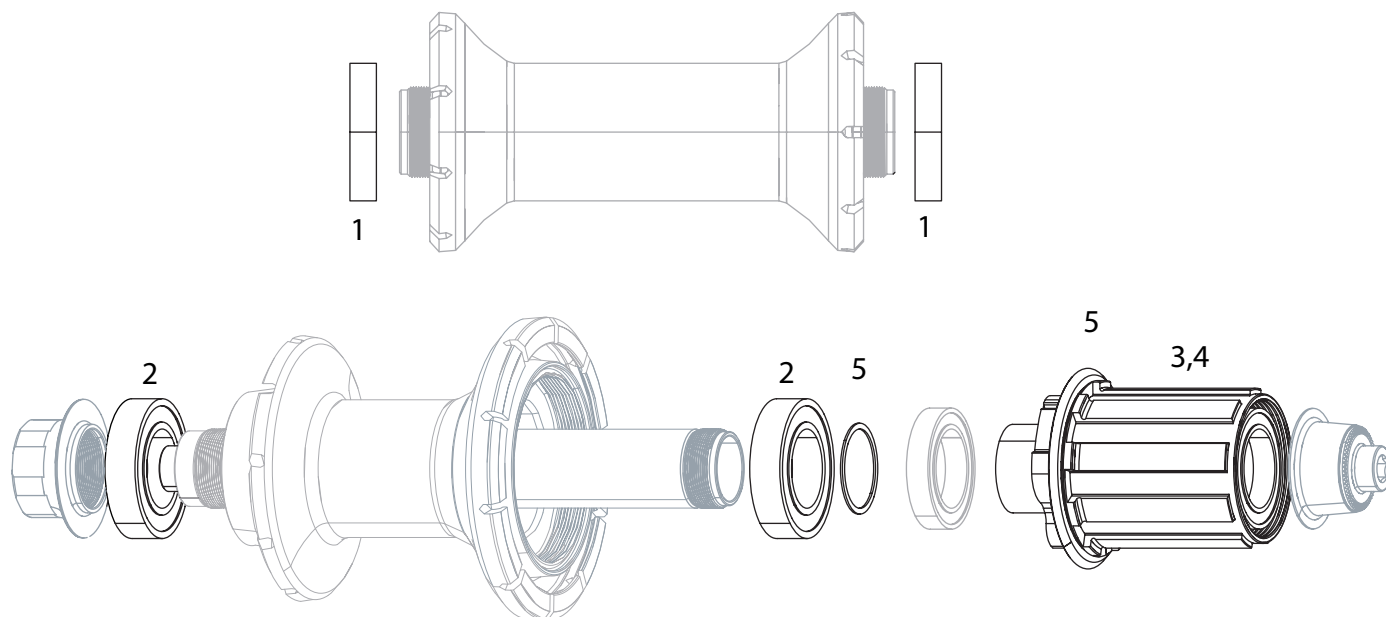


NO.	PART NUMBER	DESCRIPTION
1	11.2018.045.000	WHEEL AXLE END CAP SET FRONT ZIPP 76 CENTER LOCKING DISC BRAKE QUICK RELEASE
2	11.2018.045.010	WHEEL AXLE END CAP SET REAR ZIPP 176 CENTER LOCKING DISC BRAKE QUICK RELEASE
ns.	11.2018.046.000	WHEEL AXLE END CAP SET FRONT ZIPP 76 CENTER LOCKING DISC BRAKE THRU AXLE 12X100
ns.	11.2018.046.010	WHEEL AXLE END CAP SET REAR ZIPP 176 CENTER LOCKING DISC BRAKE THRU AXLE 12X142
ns.	11.2018.047.000	WHEEL AXLE END CAP SET FRONT ZIPP 76 CENTER LOCKING DISC BRAKE THRU AXLE 15X100
3	11.2018.054.000	WHEEL AXLE FRONT ZIPP 76D DISC BRAKE (AXLE ONLY)
4	11.2018.054.001	WHEEL AXLE REAR ZIPP 176D DISC BRAKE (AXLE ONLY)
5	11.2018.061.003	WHEEL BEARING KIT FRONT/REAR 76/77 176/177 DISC, REAR 176/177 RIM, 61903 QTY 2
6	11.2018.061.000	WHEEL FREEHUB KIT SS 176/177 11 SPEED SRAM
ns.	11.2018.061.001	WHEEL FREEHUB KIT SS 176/177 11 SPEED CAMPAGNOLO
7	11.2018.062.000	WHEEL FREEHUB KIT SS 176/177 SRAM XDR
ns	11.2018.063.001	HUB CENTERLOCK ROTOR DISC LOCKRING BLACK ZIPP LOGO QTY 1
ns	11.2018.063.002	HUB CENTERLOCK ROTOR DISC LOCKRING BLACK ZIPP LOGO (FOR ROTORS UP TO 160MM) QTY 1

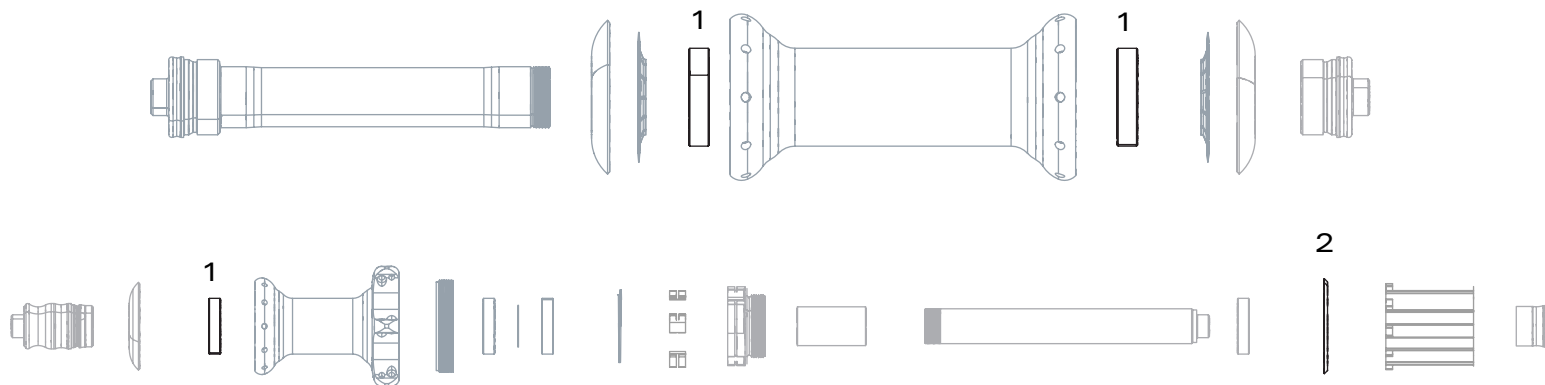
Return to
Index



NO.	PART NUMBER	DESCRIPTION
1	11.1915.028.000	WHEEL HUB BEARINGS FRONT OR REAR ZIPP 88/188 PAIR
1	00.1918.183.000	ZIPP CERAMICSPEED BEARING KIT - 61803 - ZIPP 30/60 88 FRONT HUB SHELL, 188 REAR HUB SHELL AND 30/60/S9 REAR FREEHUB BODY (INCLUDES BEARINGS AND ONE GREASE SYRINGE)
2	11.2018.024.000	WHEEL HUB BEARINGS REAR PAIR ZIPP 188 V9 (61903)
2	00.1918.183.001	ZIPP CERAMICSPEED BEARING KIT - 61903 - ZIPP 30/60 REAR HUB SHELL (INCLUDES BEARINGS AND ONE GREASE SYRINGE)
3	11.2018.001.002	WHEEL REINFORCE RING RADIAL SIDE BLACK REAR 188V7
4	11.2018.000.002	WHEEL CLINCH NUT AND SCREW THREADED BLACK REAR 188V7
5	11.1915.035.000	WHEEL SPRING AND PAWL SET FOR ZIPP 188 REAR HUB QTY 4
6	11.1915.036.000	WHEEL BEARING SHIELD FRONT OR REAR ZIPP 88/188 V6,V7,V8 (QTY 1)
7	11.2100.096.000	WHEEL AXLE FOR 188 SILVER REAR HUB BLACK 13MM INNER DIAMETER WITH BLACK END CAP (V6)
7	11.1915.086.000	WHEEL AXLE FOR ZIPP 188 BLACK REAR HUB BLACK 14MM INNER DIAMETER, NO END CAP (V7)
8	11.2015.036.000	WHEEL SCREW CLINCH NUT SET 88/188 M2.5X8
9	11.1918.010.000	WHEEL AXLE FOR 188 11 SPEED REAR HUB BLACK 13MM INNER DIAMETER WITH BLACK END CAP (V8, V9)
10	11.1918.008.000	WHEEL CASSETTE SPACER 10 SPEED 188 SRAM FREEHUB 11 SPEED - ZIPP 188/177/ SRAM 900 HUB
11	11.1918.007.000	WHEEL FREEHUB KIT 188 11 SPEED SRAM
11	11.1918.007.001	WHEEL FREEHUB KIT 188 11 SPEED CAMPAGNOLO
12	11.1918.009.000	WHEEL CONVERSION KIT 10 SPEED TO 11 SPEED 188 SRAM
13	11.1915.038.000	WHEEL FREEHUB BODY SPACER ZIPP 188 REAR QTY 2



NO.	PART NUMBER	DESCRIPTION
1	11.1918.021.000	WHEEL BEARING KIT FRONT 30/60 6803/61803 QTY 2
1	00.1918.183.000	ZIPP CERAMICSPEED BEARING KIT - 61803 - ZIPP 30/60 88 FRONT HUB SHELL, 188 REAR HUB SHELL AND 30/60/S9 REAR FREE HUB BODY (INCLUDES BEARINGS AND ONE GREASE SYRINGE)
2	11.1918.021.001	WHEEL BEARING KIT REAR 30/60 6903/61903 QTY 2
2	00.1918.183.001	ZIPP CERAMICSPEED BEARING KIT - 61903 - ZIPP 30/60 REAR HUB SHELL (INCLUDES BEARINGS AND ONE GREASE SYRINGE)
3	11.1918.024.000	WHEEL FREEHUB BODY SRAM 30/60
4	11.1918.024.001	WHEEL FREEHUB BODY CAMPAGNOLO 30/60
5	11.1918.025.000	WHEEL FREEHUB BODY SEAL AND SPACER 30/60

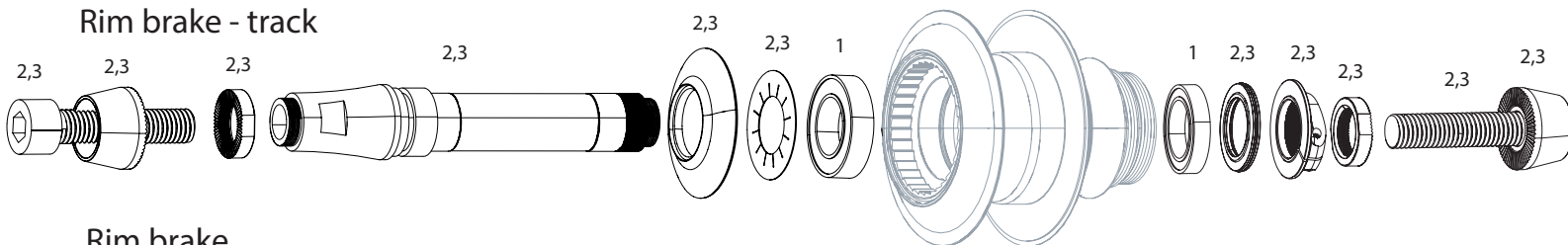


NO.	PART NUMBER	DESCRIPTION
1	11.1915.049.000	WHEEL HUB BEARINGS FRONT OR REAR ZIPP 82/182 PAIR
2	11.1915.054.000	WHEEL FREEHUB BODY SPACER ZIPP 182 REAR

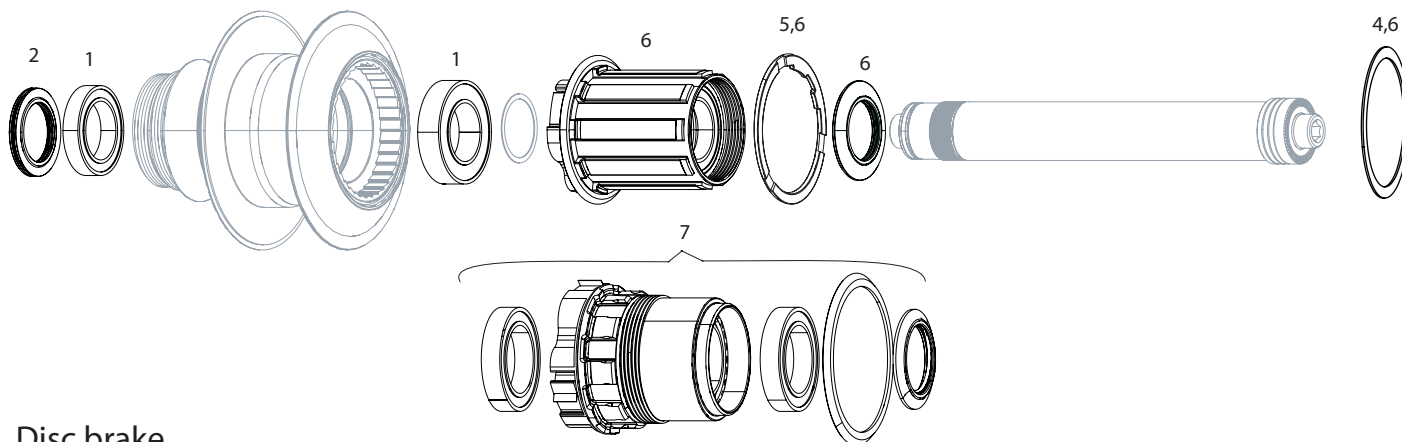
ZIPP DISC - SUPER 9 TRACK / 10 SPEED & 11 SPEED / 900 TRACK



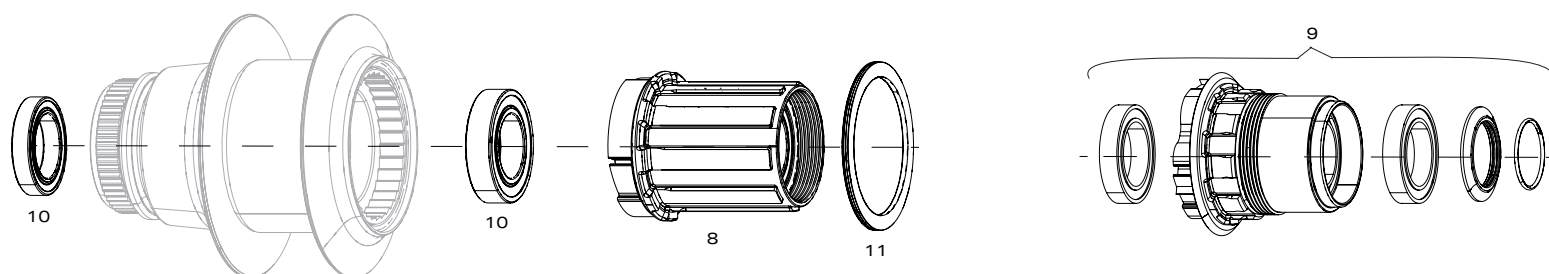
Rim brake - track



Rim brake



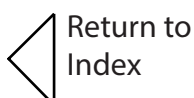
Disc brake



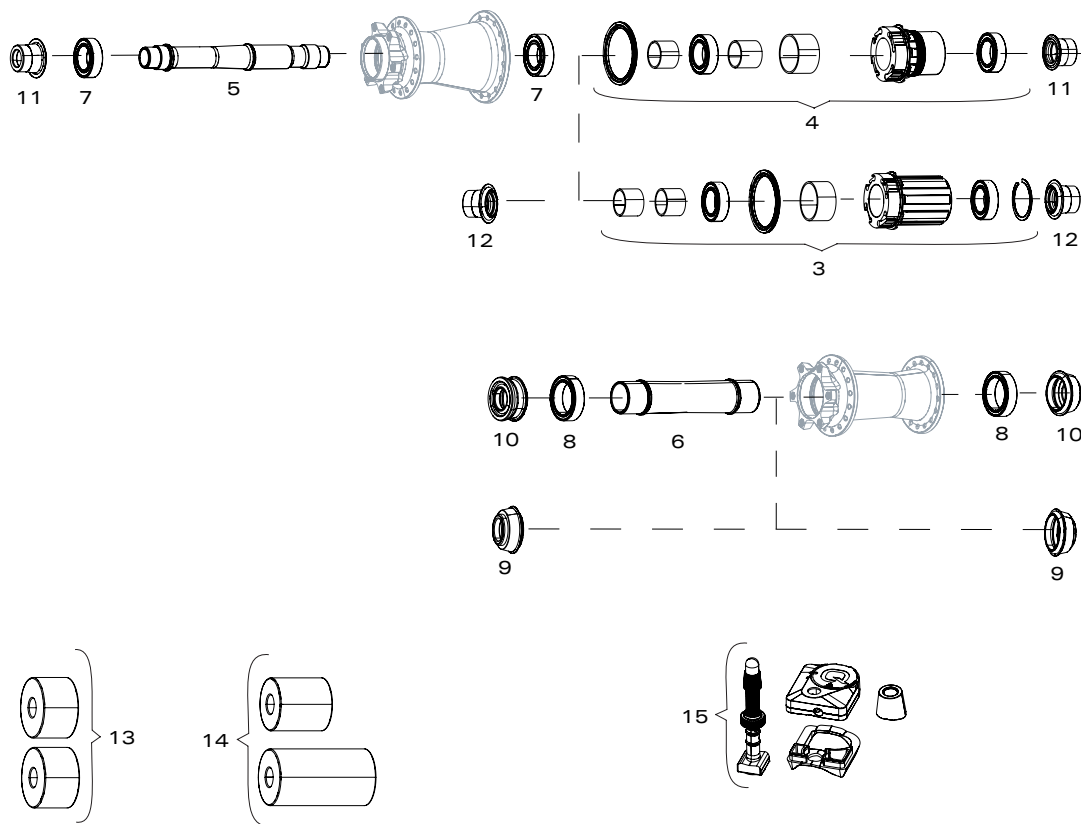
Notes:

10 and 11 speed disc conversion kits are not interchangeable.

NO.	PART NUMBER	DESCRIPTION
1	11.2018.024.000	WHEEL HUB BEARINGS REAR PAIR ZIPP 188 V9 (61903)
1	11.1915.064.000	WHEEL HUB BEARINGS FRONT OR REAR PAIR ZIPP SUPER 9 (61903 & 61803 2RS)
2	11.1918.026.000	WHEEL CONVERSION KIT DISC 11 SPEED TO TRACK 188 BLACK
3	11.2100.107.000	WHEEL AXLE CONVERSION KIT TRACK/DISC 188 (CASSETTE TO TRACK 10 SPEED HUBS ONLY)
4	11.1915.038.000	WHEEL FREEHUB BODY SPACER ZIPP 188 REAR QTY 2
5	11.1918.008.000	WHEEL CASSETTE SPACER 10 SPEED 188 SRAM FREEHUB 11 SPEED - ZIPP 188/177/ SRAM 900 HUB
6	11.1918.007.000	WHEEL FREEHUB KIT 188 11 SPEED SRAM
ns	11.1918.007.001	WHEEL FREEHUB KIT 188 11 SPEED CAMPAGNOLO
7	11.1918.077.000	WHEEL FREEHUB KIT SRAM XDR (SUPER 9RB ONLY)
8	11.2018.061.000	WHEEL FREEHUB KIT SS 176/177 11 SPEED SRAM
ns	11.2018.061.001	WHEEL FREEHUB KIT SS 176/177 11 SPEED CAMPAGNOLO
9	11.2018.062.000	WHEEL FREEHUB KIT SS 176/177 SRAM XDR
10	11.2018.061.002	WHEEL BEARING KIT REAR ZIPP SUPER 9 DISC BRAKE 61803 QTY 1, 61903 QTY 1
11	11.1918.052.000	WHEEL SEAL AND SHIM FREEHUB BODY ZIPP 177 QTY 1
ns	11.2018.063.001	HUB CENTERLOCK ROTOR DISC LOCKRING BLACK ZIPP LOGO QTY 1
ns	11.2018.063.002	HUB CENTERLOCK ROTOR DISC LOCKRING BLACK ZIPP LOGO (FOR ROTORS UP TO 160MM) QTY 1



ZM1 HUB - 3ZERO MOTO



NO.	PART NUMBER	DESCRIPTION
1	11.1918.080.000	SPOKES & NIPPLES & WASHERS 3-PACK 280MM D-LIGHT J-BEND EXTERNAL BLACK (3ZERO MOTO 27.5 REAR DS)
1	11.1918.080.001	SPOKES & NIPPLES & WASHERS 3-PACK 282MM D-LIGHT J-BEND EXTERNAL BLACK (3ZERO MOTO 27.5 FRONT NDS AND REAR NDS)
1	11.1918.080.002	SPOKES & NIPPLES & WASHERS 3-PACK 284MM D-LIGHT J-BEND EXTERNAL BLACK (3ZERO MOTO 27.5 FRONT DS)
1	11.1918.080.003	SPOKES & NIPPLES & WASHERS 3-PACK 300MM D-LIGHT J-BEND EXTERNAL BLACK (3ZERO MOTO 29 FRONT NDS AND REAR DS)
1	11.1918.080.004	SPOKES & NIPPLES & WASHERS 3-PACK 302MM D-LIGHT J-BEND EXTERNAL BLACK (3ZERO MOTO 29 FRONT DS AND REAR NDS)
2	SEE RIM OVERVIEW AT NEXT PAGE	
3	11.2018.060.000	WHEEL DRIVER BODY KIT - 9/10 SPEED - ZM1 3ZERO
4	00.2018.014.000	WHEEL FREEHUB KIT - XD DRIVER BODY KIT - ZM1 3ZERO
5	11.2018.060.001	WHEEL AXLE - REAR - ZM1 3ZERO
6	11.2018.060.002	WHEEL AXLE - FRONT - ZM1 3ZERO
7	11.2018.060.004	WHEEL HUB BEARING KIT - REAR - (INCLUDES 1-6903/61903 AND 1-63803D28) - ZM1 3ZERO
8	11.2018.060.003	WHEEL HUB BEARING KIT - FRONT - (INCLUDES 2-23327) - ZM1 3ZERO
9	11.2018.059.001	WHEEL AXLE END CAP SET FRONT - 15X110 BOOST, 31MM THROUGH AXLE, TORQUE CAP ROCKSHOX FORKS - ZM1 3ZERO HUBS
10	11.2018.059.000	WHEEL AXLE END CAP SET FRONT - 15X110 BOOST THROUGH AXLE - ZM1 3ZERO HUBS
11	11.2018.059.002	WHEEL AXLE END CAP SET REAR - 12X148 BOOST, FITS XD DRIVER BODY - ZM1 3ZERO HUBS
12	11.2018.059.003	WHEEL AXLE END CAP SET REAR - 12X148 BOOST, FITS 9/10 SPEED DRIVER BODY - ZM1 3ZERO HUBS
13	00.1918.177.010	BEARING PRESS TOOL 23X32X7, FRONT HUB - X0 HUBS/900 HUBS/RISE 60 (B1)/ROAM 30/ROAM 40/ROAM 60(B1)/RAIL 40/RISE XX
14	00.1918.177.040	BEARING PRESS TOOLS 6903/63803D28, REAR HUB - X0 HUBS/900 HUBS/RISE 60 (B1)/ROAM 30/ROAM 40/ROAM 60(B1)/RAIL 40/RISE XX
15	00.3018.255.000	QUARQ TYREWIZ FOR MOTO AIR PRESSURE SENSOR FOR PRESTA VALVE
ns	11.1918.081.000	WHEEL DECAL KIT 3ZERO 27 MOTO SLATE SINGLE RIM
ns	11.1918.081.001	WHEEL DECAL KIT 3ZERO 27 MOTO SILVER SINGLE RIM
ns	11.1918.081.002	WHEEL DECAL KIT 3ZERO 29 MOTO SLATE SINGLE RIM
ns	11.1918.081.003	WHEEL DECAL KIT 3ZERO 29 MOTO SILVER SINGLE RIM
ns	00.1915.228.030	ZIPP 3ZERO MOTO RIM STRIP AND TUBELESS TAPE KIT 27" (INCLUDES RIM STRIP AND TUBELESS TAPE FOR 1 WHEEL)
ns	00.1915.228.040	ZIPP 3ZERO MOTO RIM STRIP AND TUBELESS TAPE KIT 29" (INCLUDES RIM STRIP AND TUBELESS TAPE FOR 1 WHEEL)
ns	11.1918.082.000	SPOKE NIPPLE WASHERS SAPIM NRHM 34-PACK FOR 3 ZERO MOTO WHEELS
ns	00.1918.458.000	TUBELESS UNIVERSAL VALVE, REMOVABLE VALVE CORE (INCLUDES 1 TUBELESS VALVE & 1 VALVE CORE WRENCH) - ZIPP 3ZERO MOTO



3ZERO MOTO

(including decals, Speed Line™ decal (pinstripe), rim strip, tubeless tape & valve)



NO.	PART NUMBER	DESCRIPTION
2	00.1918.446.000	AM RIM 3ZERO MOTO TUBELESS 27.5 FRONT 32HOLE SILVER/SILVER GRAPHIC A1
2	00.1918.446.001	AM RIM 3ZERO MOTO TUBELESS 27.5 FRONT 32HOLE SILVER/RS RED GRAPHIC A1
2	00.1918.446.002	AM RIM 3ZERO MOTO TUBELESS 27.5 FRONT 32HOLE SILVER/ORANGE GRAPHIC A1
2	00.1918.446.005	AM RIM 3ZERO MOTO TUBELESS 27.5 FRONT 32HOLE SILVER/BLUE GRAPHIC A1
2	00.1918.446.006	AM RIM 3ZERO MOTO TUBELESS 27.5 FRONT 32HOLE SILVER/YELLOW GRAPHIC A1
2	00.1918.446.007	AM RIM 3ZERO MOTO TUBELESS 27.5 FRONT 32HOLE SILVER/STEALTHGRAPHIC A1
2	00.1918.446.008	AM RIM 3ZERO MOTO TUBELESS 27.5 FRONT 32HOLE SLATE/SILVER GRAPHIC A1
2	00.1918.446.009	AM RIM 3ZERO MOTO TUBELESS 27.5 FRONT 32HOLE SLATE/RS RED GRAPHIC A1
2	00.1918.446.010	AM RIM 3ZERO MOTO TUBELESS 27.5 FRONT 32HOLE SLATE/ORANGE GRAPHIC A1
2	00.1918.446.013	AM RIM 3ZERO MOTO TUBELESS 27.5 FRONT 32HOLE SLATE/BLUE GRAPHIC A1
2	00.1918.446.014	AM RIM 3ZERO MOTO TUBELESS 27.5 FRONT 32HOLE SLATE/YELLOW GRAPHIC A1
2	00.1918.446.015	AM RIM 3ZERO MOTO TUBELESS 27.5 FRONT 32HOLE SLATE/STEALTH GRAPHIC A1
2	00.1918.448.000	AM RIM 3ZERO MOTO TUBELESS 27.5 REAR 32HOLE SILVER/SILVER GRAPHIC A1
2	00.1918.448.001	AM RIM 3ZERO MOTO TUBELESS 27.5 REAR 32HOLE SILVER/RS RED GRAPHIC A1
2	00.1918.448.002	AM RIM 3ZERO MOTO TUBELESS 27.5 REAR 32HOLE SILVER/ORANGE GRAPHIC A1
2	00.1918.448.005	AM RIM 3ZERO MOTO TUBELESS 27.5 REAR 32HOLE SILVER/BLUE GRAPHIC A1
2	00.1918.448.006	AM RIM 3ZERO MOTO TUBELESS 27.5 REAR 32HOLE SILVER/YELLOW GRAPHIC A1
2	00.1918.448.007	AM RIM 3ZERO MOTO TUBELESS 27.5 REAR 32HOLE SILVER/STEALTH GRAPHIC A1
2	00.1918.448.008	AM RIM 3ZERO MOTO TUBELESS 27.5 REAR 32HOLE SLATE/SILVER GRAPHIC A1
2	00.1918.448.009	AM RIM 3ZERO MOTO TUBELESS 27.5 REAR 32HOLE SLATE/RS RED GRAPHIC A1
2	00.1918.448.010	AM RIM 3ZERO MOTO TUBELESS 27.5 REAR 32HOLE SLATE/ORANGE GRAPHIC A1
2	00.1918.448.013	AM RIM 3ZERO MOTO TUBELESS 27.5 REAR 32HOLE SLATE/BLUE GRAPHIC A1
2	00.1918.448.014	AM RIM 3ZERO MOTO TUBELESS 27.5 REAR 32HOLE SLATE/YELLOW GRAPHIC A1
2	00.1918.448.015	AM RIM 3ZERO MOTO TUBELESS 27.5 REAR 32HOLE SLATE/STEALTH GRAPHIC A1
2	00.1918.447.000	AM RIM 3ZERO MOTO TUBELESS 29 FRONT 32HOLE SILVER/SILVER GRAPHIC A1
2	00.1918.447.001	AM RIM 3ZERO MOTO TUBELESS 29 FRONT 32HOLE SILVER/RS RED GRAPHIC A1
2	00.1918.447.002	AM RIM 3ZERO MOTO TUBELESS 29 FRONT 32HOLE SILVER/ORANGE GRAPHIC A1
2	00.1918.447.005	AM RIM 3ZERO MOTO TUBELESS 29 FRONT 32HOLE SILVER/BLUE GRAPHIC A1
2	00.1918.447.006	AM RIM 3ZERO MOTO TUBELESS 29 FRONT 32HOLE SILVER/YELLOW GRAPHIC A1
2	00.1918.447.007	AM RIM 3ZERO MOTO TUBELESS 29 FRONT 32HOLE SILVER/STEALTH GRAPHIC A1
2	00.1918.447.008	AM RIM 3ZERO MOTO TUBELESS 29 FRONT 32HOLE SLATE/SILVER GRAPHIC A1
2	00.1918.447.009	AM RIM 3ZERO MOTO TUBELESS 29 FRONT 32HOLE SLATE/RS RED GRAPHIC A1
2	00.1918.447.010	AM RIM 3ZERO MOTO TUBELESS 29 FRONT 32HOLE SLATE/ORANGE GRAPHIC A1
2	00.1918.447.013	AM RIM 3ZERO MOTO TUBELESS 29 FRONT 32HOLE SLATE/BLUE GRAPHIC A1
2	00.1918.447.014	AM RIM 3ZERO MOTO TUBELESS 29 FRONT 32HOLE SLATE/YELLOW GRAPHIC A1
2	00.1918.447.015	AM RIM 3ZERO MOTO TUBELESS 29 FRONT 32HOLE SLATE/STEALTH GRAPHIC A1
2	00.1918.449.000	AM RIM 3ZERO MOTO TUBELESS 29 REAR 32HOLE SILVER/SILVER GRAPHIC A1
2	00.1918.449.001	AM RIM 3ZERO MOTO TUBELESS 29 REAR 32HOLE SILVER/RS RED GRAPHIC A1
2	00.1918.449.002	AM RIM 3ZERO MOTO TUBELESS 29 REAR 32HOLE SILVER/ORANGE GRAPHIC A1
2	00.1918.449.005	AM RIM 3ZERO MOTO TUBELESS 29 REAR 32HOLE SILVER/BLUE GRAPHIC A1
2	00.1918.449.006	AM RIM 3ZERO MOTO TUBELESS 29 REAR 32HOLE SILVER/YELLOW GRAPHIC A1
2	00.1918.449.007	AM RIM 3ZERO MOTO TUBELESS 29 REAR 32HOLE SILVER/STEALTH GRAPHIC A1
2	00.1918.449.008	AM RIM 3ZERO MOTO TUBELESS 29 REAR 32HOLE SLATE/SILVER GRAPHIC A1
2	00.1918.449.009	AM RIM 3ZERO MOTO TUBELESS 29 REAR 32HOLE SLATE/RS RED GRAPHIC A1
2	00.1918.449.010	AM RIM 3ZERO MOTO TUBELESS 29 REAR 32HOLE SLATE/ORANGE GRAPHIC A1
2	00.1918.449.013	AM RIM 3ZERO MOTO TUBELESS 29 REAR 32HOLE SLATE/BLUE GRAPHIC A1
2	00.1918.449.014	AM RIM 3ZERO MOTO TUBELESS 29 REAR 32HOLE SLATE/YELLOW GRAPHIC A1
2	00.1918.449.015	AM RIM 3ZERO MOTO TUBELESS 29 REAR 32HOLE SLATE/STEALTH GRAPHIC A1

 [Return to Index](#)



PART NUMBER	DESCRIPTION
11.1918.072.000	SPOKES & NIPPLES 3-PACK 226MM CX-RAY J-BEND EXTERNAL BLACK (INCLUDING 858DB SPECIFIC SPOKE NIPPLES)
11.1918.072.001	SPOKES & NIPPLES 3-PACK 230MM CX-RAY J-BEND EXTERNAL BLACK (INCLUDING 858DB SPECIFIC SPOKE NIPPLES)
11.1918.072.002	SPOKES & NIPPLES 3-PACK 232MM CX-RAY J-BEND EXTERNAL BLACK (INCLUDING 858DB SPECIFIC SPOKE NIPPLES)
11.1915.023.110	SPOKES & NIPPLES 3-PACK 236MM CX-RAY STRAIGHT-PULL EXTERNAL SILVER
11.1915.023.170	SPOKES & NIPPLES 3-PACK 248MM CX-RAY STRAIGHT-PULL EXTERNAL SILVER
11.1915.023.210	SPOKES & NIPPLES 3-PACK 260MM CX-RAY STRAIGHT-PULL EXTERNAL SILVER
11.1915.023.250	SPOKES & NIPPLES 3-PACK 270MM CX-RAY STRAIGHT-PULL EXTERNAL SILVER
11.1915.023.260	SPOKES & NIPPLES 3-PACK 272MM CX-RAY STRAIGHT-PULL EXTERNAL SILVER
11.1918.063.000	SPOKES & NIPPLES & WASHERS 3-PACK 226MM CX-SPRINT STRAIGHT-PULL HEXAGONAL SECURE LOCK BLACK OXIDE
11.1918.063.010	SPOKES & NIPPLES & TITANIUM WASHERS 3-PACK 236MM CX-SPRINT STRAIGHT-PULL HEXAGONAL SECURE LOCK BLACK OXIDE
11.1918.063.020	SPOKES & NIPPLES & WASHERS 3-PACK 248MM CX-SPRINT STRAIGHT-PULL HEXAGONAL SECURE LOCK BLACK OXIDE
11.1918.063.030	SPOKES & NIPPLES & TITANIUM WASHERS 3-PACK 258MM CX-SPRINT STRAIGHT-PULL HEXAGONAL SECURE LOCK BLACK OXIDE
11.1918.063.040	SPOKES & NIPPLES & WASHERS 3-PACK 260MM CX-SPRINT STRAIGHT-PULL HEXAGONAL SECURE LOCK BLACK OXIDE
11.1918.063.050	SPOKES & NIPPLES & TITANIUM WASHERS 3-PACK 270MM CX-SPRINT STRAIGHT-PULL HEXAGONAL SECURE LOCK BLACK OXIDE
11.1918.063.060	SPOKES & NIPPLES & WASHERS 3-PACK 272MM CX-SPRINT STRAIGHT-PULL HEXAGONAL SECURE LOCK BLACK OXIDE
11.1918.063.070	SPOKES & NIPPLES & WASHERS 3-PACK 274MM CX-SPRINT STRAIGHT-PULL HEXAGONAL SECURE LOCK BLACK OXIDE
11.1918.063.080	SPOKES & NIPPLES & WASHERS 3-PACK 284MM CX-SPRINT STRAIGHT-PULL HEXAGONAL SECURE LOCK BLACK OXIDE
11.1918.063.100	SPOKES & NIPPLES & WASHERS 3-PACK 234MM CX-SPRINT STRAIGHT-PULL HEXAGONAL SECURE LOCK BLACK OXIDE
11.1918.075.000	SPOKES & NIPPLES & WASHERS 3-PACK 256MM CX-SPRINT J-BEND EXTERNAL BLACK
11.1918.075.001	SPOKES & NIPPLES & WASHERS 3-PACK 262MM CX-SPRINT J-BEND EXTERNAL BLACK
11.1918.075.002	SPOKES & NIPPLES & WASHERS 3-PACK 264MM CX-SPRINT J-BEND EXTERNAL BLACK
11.1918.075.003	SPOKES & NIPPLES & WASHERS 3-PACK 266MM CX-SPRINT J-BEND EXTERNAL BLACK
11.1918.075.004	SPOKES & NIPPLES & WASHERS 3-PACK 268MM CX-SPRINT J-BEND EXTERNAL BLACK
11.1918.075.005	SPOKES & NIPPLES & WASHERS 3-PACK 220MM CX-SPRINT J-BEND EXTERNAL BLACK
11.1918.075.006	SPOKES & NIPPLES & WASHERS 3-PACK 224MM CX-SPRINT J-BEND EXTERNAL BLACK
11.1918.075.007	SPOKES & NIPPLES & WASHERS 3-PACK 228MM CX-SPRINT J-BEND EXTERNAL BLACK
11.1918.075.008	SPOKES & NIPPLES & WASHERS 3-PACK 230MM CX-SPRINT J-BEND EXTERNAL BLACK
11.1918.075.009	SPOKES & NIPPLES & WASHERS 3-PACK 242MM CX-SPRINT J-BEND EXTERNAL BLACK
11.1918.075.010	SPOKES & NIPPLES & WASHERS 3-PACK 244MM CX-SPRINT J-BEND EXTERNAL BLACK
11.1918.075.011	SPOKES & NIPPLES & WASHERS 3-PACK 246MM CX-SPRINT J-BEND EXTERNAL BLACK
11.1918.075.012	SPOKES & NIPPLES & WASHERS 3-PACK 248MM CX-SPRINT J-BEND EXTERNAL BLACK
11.1918.075.013	SPOKES & NIPPLES & WASHERS 3-PACK 252MM CX-SPRINT J-BEND EXTERNAL BLACK
11.1918.075.014	SPOKES & NIPPLES & WASHERS 3-PACK 254MM CX-SPRINT J-BEND EXTERNAL BLACK
11.1918.075.015	SPOKES & NIPPLES & WASHERS 3-PACK 260MM CX-SPRINT J-BEND EXTERNAL BLACK
11.1918.075.016	SPOKES & NIPPLES & WASHERS 3-PACK 274MM CX-SPRINT J-BEND EXTERNAL BLACK
11.1918.075.017	SPOKES & NIPPLES & WASHERS 3-PACK 278MM CX-SPRINT J-BEND EXTERNAL BLACK
11.1918.075.018	SPOKES & NIPPLES & WASHERS 3-PACK 280MM CX-SPRINT J-BEND EXTERNAL BLACK
11.1915.026.020	SPOKE NIPPLE WASHERS OVAL 50-PACK FOR FIRECREST WHEELS
11.1915.026.060	SPOKE NIPPLE WASHERS ROUND TITANIUM 25-PACK FOR 202 CARBON CLINCHER FIRECREST AND 454 WHEELS
11.1915.026.070	SPOKE NIPPLES EXTERNAL HEXAGONAL SECURE LOCK ALUMINUM BLACK 20-PACK 2.0 X 14
11.1918.076.000	SPOKE NIPPLES EXTERNAL HEXAGONAL SECURE LOCK BRASS BLACK 14MM 12CNM V2 QTY 24

ZIPP WHEEL DECALS 1/2 (all models till 2019)

(All kits come with 7 rim sidewall decals and 1 valve sticker)



PART NUMBER	DESCRIPTION
-------------	-------------

202

11.1918.015.000	WHEEL DECAL SET 202 MATTE BLACK/NO BORDER ZIPP LOGO COMPLETE FOR ONE WHEEL
11.1918.030.000	WHEEL DECAL SET 202 MATTE WHITE/NO BORDER ZIPP LOGO COMPLETE FOR ONE WHEEL
11.1918.036.000	WHEEL DECAL SET 202 MATTE RED/NO BORDER ZIPP LOGO COMPLETE FOR ONE WHEEL

303

11.1918.015.001	WHEEL DECAL SET 303 MATTE BLACK/NO BORDER ZIPP LOGO COMPLETE FOR ONE WHEEL
11.1918.030.001	WHEEL DECAL SET 303 MATTE WHITE/NO BORDER ZIPP LOGO COMPLETE FOR ONE WHEEL
11.1918.035.001	WHEEL DECAL SET 303 MATTE BLUE/NO BORDER ZIPP LOGO COMPLETE FOR ONE WHEEL
11.1918.036.001	WHEEL DECAL SET 303 MATTE RED/NO BORDER ZIPP LOGO COMPLETE FOR ONE WHEEL
11.1918.037.001	WHEEL DECAL SET 303 MATTE PINK/NO BORDER ZIPP LOGO COMPLETE FOR ONE WHEEL
11.1918.038.001	WHEEL DECAL SET 303 MATTE GREEN/NO BORDER ZIPP LOGO COMPLETE FOR ONE WHEEL
11.1918.074.000	WHEEL DECAL KIT 303 B1 WHITE SINGLE RIM +1 EXTRA DECAL
11.1918.074.001	WHEEL DECAL KIT 303 B1 BLACK SINGLE RIM +1 EXTRA DECAL

404

11.1918.015.002	WHEEL DECAL SET 404 MATTE BLACK/NO BORDER ZIPP LOGO COMPLETE FOR ONE WHEEL
11.1918.030.002	WHEEL DECAL SET 404 MATTE WHITE/NO BORDER ZIPP LOGO COMPLETE FOR ONE WHEEL
11.1918.035.002	WHEEL DECAL SET 404 MATTE BLUE/NO BORDER ZIPP LOGO COMPLETE FOR ONE WHEEL
11.1918.036.002	WHEEL DECAL SET 404 MATTE RED/NO BORDER ZIPP LOGO COMPLETE FOR ONE WHEEL
11.1918.037.002	WHEEL DECAL SET 404 MATTE PINK/NO BORDER ZIPP LOGO COMPLETE FOR ONE WHEEL
11.1918.038.002	WHEEL DECAL SET 404 MATTE GREEN/NO BORDER ZIPP LOGO COMPLETE FOR ONE WHEEL
11.1918.074.002	WHEEL DECAL KIT 404 B1 WHITE SINGLE RIM +1 EXTRA DECAL
11.1918.074.003	WHEEL DECAL KIT 404 B1 BLACK SINGLE RIM +1 EXTRA DECAL

808

11.1918.015.003	WHEEL DECAL SET 808 MATTE BLACK/NO BORDER ZIPP LOGO COMPLETE FOR ONE WHEEL OR DISC
11.1918.030.003	WHEEL DECAL SET 808 MATTE WHITE/NO BORDER ZIPP LOGO COMPLETE FOR ONE WHEEL OR DISC
11.1918.035.003	WHEEL DECAL SET DISC/808 MATTE BLUE/NO BORDER ZIPP LOGO COMPLETE FOR ONE WHEEL
11.1918.036.003	WHEEL DECAL SET DISC/808 MATTE RED/NO BORDER ZIPP LOGO COMPLETE FOR ONE WHEEL
11.1918.038.003	WHEEL DECAL SET DISC/808 MATTE GREEN/NO BORDER ZIPP LOGO COMPLETE FOR ONE WHEEL
11.1918.074.004	WHEEL DECAL KIT 808 B1 WHITE SINGLE RIM +1 EXTRA DECAL
11.1918.074.005	WHEEL DECAL KIT 808 B1 BLACK SINGLE RIM +1 EXTRA DECAL

302

11.1918.068.000	WHEEL DECAL KIT 302 DISC WHITE SINGLE RIM +1 EXTRA DECAL
11.1918.068.001	WHEEL DECAL KIT 302 RIM WHITE SINGLE RIM +1 EXTRA DECAL
11.1918.068.002	WHEEL DECAL KIT 302 DISC BLACK SINGLE RIM +1 EXTRA DECAL
11.1918.068.003	WHEEL DECAL KIT 302 RIM BLACK SINGLE RIM +1 EXTRA DECAL

Decal kits of Tubeless compatible disc wheels:

11.1918.067.000	WHEEL DECAL KIT 202 DISC WHITE SINGLE RIM +1 EXTRA DECAL
11.1918.067.001	WHEEL DECAL KIT 202 DISC BLACK SINGLE RIM +1 EXTRA DECAL
11.1918.067.003	WHEEL DECAL KIT 202 DISC BLUE SINGLE RIM +1 EXTRA DECAL
11.1918.067.004	WHEEL DECAL KIT 202 DISC RED SINGLE RIM +1 EXTRA DECAL
11.1918.067.005	WHEEL DECAL KIT 202 DISC PINK SINGLE RIM +1 EXTRA DECAL
11.1918.067.006	WHEEL DECAL KIT 202 DISC GREEN SINGLE RIM +1 EXTRA DECAL
11.1918.069.000	WHEEL DECAL KIT 303 DISC WHITE SINGLE RIM +1 EXTRA DECAL
11.1918.069.001	WHEEL DECAL KIT 303 DISC BLACK SINGLE RIM +1 EXTRA DECAL
11.1918.069.003	WHEEL DECAL KIT 303 DISC BLUE SINGLE RIM +1 EXTRA DECAL
11.1918.069.004	WHEEL DECAL KIT 303 DISC RED SINGLE RIM +1 EXTRA DECAL
11.1918.069.005	WHEEL DECAL KIT 303 DISC PINK SINGLE RIM +1 EXTRA DECAL
11.1918.069.006	WHEEL DECAL KIT 303 DISC GREEN SINGLE RIM +1 EXTRA DECAL
11.1918.069.007	WHEEL DECAL KIT 303 650B DISC WHITE SINGLE RIM +1 EXTRA DECAL
11.1918.069.008	WHEEL DECAL KIT 303 650B DISC BLACK SINGLE RIM +1 EXTRA DECAL
11.1918.070.000	WHEEL DECAL KIT 404 DISC WHITE SINGLE RIM +1 EXTRA DECAL
11.1918.070.001	WHEEL DECAL KIT 404 DISC BLACK SINGLE RIM +1 EXTRA DECAL
11.1918.070.003	WHEEL DECAL KIT 404 DISC BLUE SINGLE RIM +1 EXTRA DECAL
11.1918.070.004	WHEEL DECAL KIT 404 DISC RED SINGLE RIM +1 EXTRA DECAL
11.1918.070.005	WHEEL DECAL KIT 404 DISC PINK SINGLE RIM +1 EXTRA DECAL
11.1918.070.006	WHEEL DECAL KIT 404 DISC GREEN SINGLE RIM +1 EXTRA DECAL
11.1918.079.000	WHEEL DECAL KIT 404 DISC CHROME SINGLE RIM +1 EXTRA DECAL
11.1918.071.000	WHEEL DECAL KIT 808 DISC WHITE SINGLE RIM +1 EXTRA DECAL
11.1918.071.001	WHEEL DECAL KIT 808 DISC BLACK SINGLE RIM +1 EXTRA DECAL
11.1918.071.003	WHEEL DECAL KIT 808 DISC BLUE SINGLE RIM +1 EXTRA DECAL
11.1918.071.004	WHEEL DECAL KIT 808 DISC RED SINGLE RIM +1 EXTRA DECAL
11.1918.071.005	WHEEL DECAL KIT 808 DISC PINK SINGLE RIM +1 EXTRA DECAL
11.1918.071.006	WHEEL DECAL KIT 808 DISC GREEN SINGLE RIM +1 EXTRA DECAL

Return to
Index

ZIPP WHEEL DECALS 2/2 (New 2020 models)

ZIPP TUBELESS KITS



Decal kits Zipp wheel (Updated graphics >May 2020)
Includes decal placement manual.

PART NUMBER	DESCRIPTION
11.1918.083.000	WHEEL DECAL KIT ZIPP 202 DISC BRAKE SINGLE RIM 2020 GRAPHICS
11.1918.083.001	WHEEL DECAL KIT ZIPP 303 DISC BRAKE SINGLE RIM 2020 GRAPHICS
11.1918.083.002	WHEEL DECAL KIT ZIPP 303 RIM BRAKE SINGLE RIM 2020 GRAPHICS
11.1918.083.003	WHEEL DECAL KIT ZIPP 404 DISC & RIM BRAKE SINGLE RIM 2020 GRAPHICS
11.1918.083.004	WHEEL DECAL KIT ZIPP 808 DISC & RIM BRAKE SINGLE RIM 2020 GRAPHICS
11.1918.083.005	WHEEL DECAL KIT ZIPP 303 650B DISC BRAKE SINGLE RIM 2020 GRAPHICS

PART NUMBER	DESCRIPTION
11.1918.084.000	TUBELESS KIT INCLUDES 26MM TAPE, 2 UNIVERSAL VALVES 44MM & 1 VALVE CORE WRENCH (FITS 202,30COURSE)
11.1918.084.001	TUBELESS KIT INCLUDES 26MM TAPE, 2 UNIVERSAL VALVES 60MM & 1 VALVE CORE WRENCH (FITS 303,303S)
11.1918.084.002	TUBELESS KIT INCLUDES 26MM TAPE, 2 UNIVERSAL VALVES 80MM & 1 VALVE CORE WRENCH (FITS 454,404)
11.1918.084.003	TUBELESS KIT INCLUDES 23MM TAPE, 2 UNIVERSAL VALVES 100MM & 1 VALVE CORE WRENCH (FITS 858,808 NSW)
11.1918.084.004	TUBELESS KIT INCLUDES 26MM TAPE, 2 UNIVERSAL VALVES 100MM & 1 VALVE CORE WRENCH (FITS 808 FIRECREST)



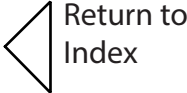


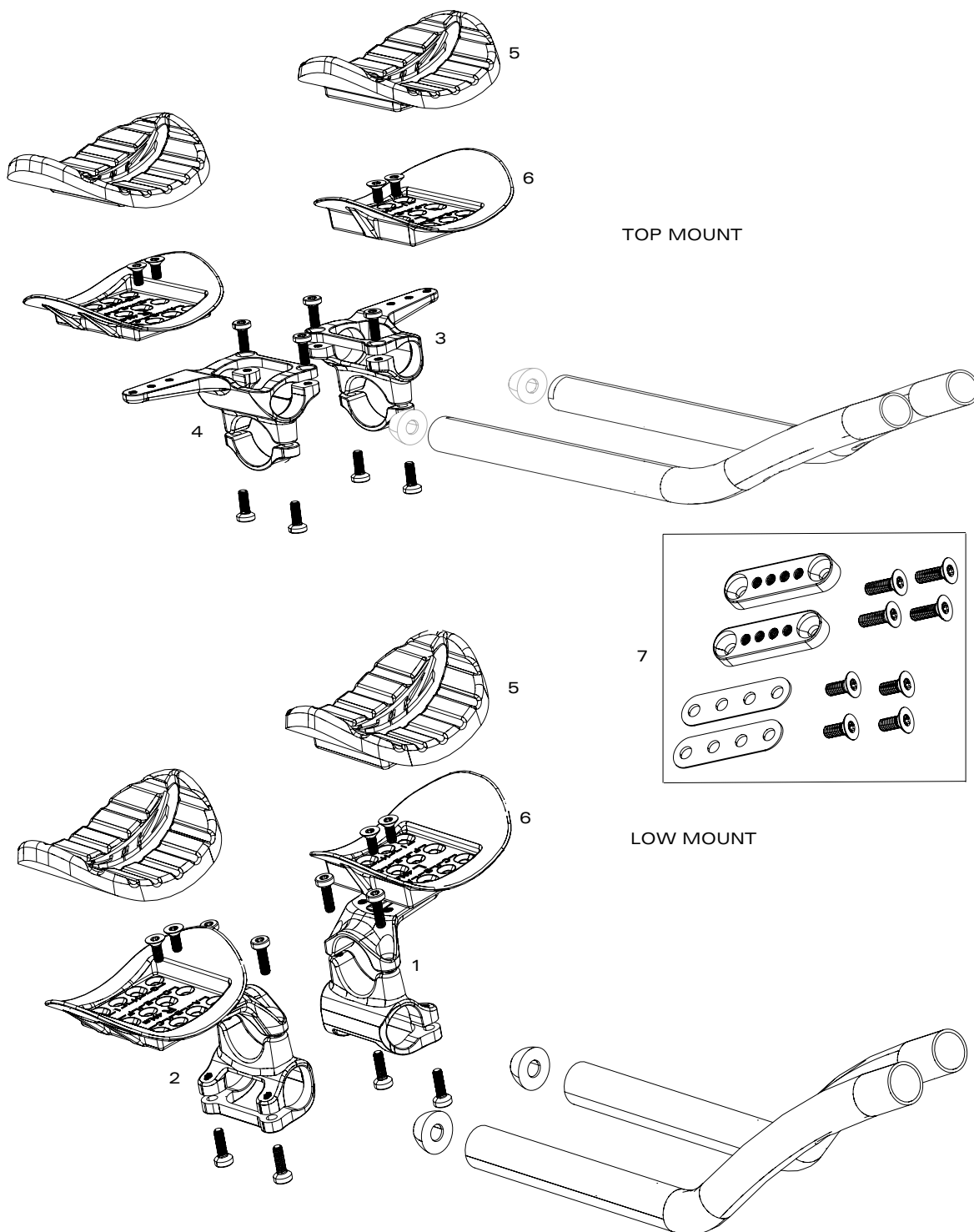
XDR DRIVER BODY COMPATIBILITY

WHEELS		FREEHUB / DRIVER BODY		END CAPS INCLUDED?		COMPATIBLE END CAP	
		GENERATION 1		AXLE TYPE			
Zipp NSW Cognition Rim Brake 202 / 303 / 404 / 808 454 / 858		11.2018.034.002	Wheel Freehub Kit Cognition NSW XDR (Including DS End Cap)	YES	QR	11.2018.033.003	Wheel Axle End Cap Assembly Drive Side Rear Zipp Cognition NSW XDR / Campagnolo Generation 1 and XDR Generation 2
		GENERATION 2 AS OF SERIAL NUMBER 21P31810039 (SEE FREEHUB SHEET)		NO	QR	11.2018.033.003	Wheel Axle End Cap Assembly Drive Side Rear Zipp Cognition NSW XDR / Campagnolo Generation 1 and XDR Generation 2
		11.2018.051.002	Wheel Freehub Kit Cognition NSW XDR Disc Brake / Rim Brake Generation 2 (End Caps Not Included)	NO	QR	11.2018.048.030	Wheel Axle End Cap Set Rear Zipp Cognition Center Locking Disc Brake Quick Release XDR
				NO	Thru axle 12x135	11.2018.049.050	Wheel Axle End Cap Set Rear Zipp Cognition Center Locking Disc Brake Thru Axle 12x135 XDR
				NO	Thru axle 12x142	11.2018.049.060	Wheel Axle End Cap Set Rear Zipp Cognition Center Locking Disc Brake Thru Axle 12x142 XDR
Zipp NSW Cognition Disc Brake 202 / 303 / 404 / 808 454 / 858		11.2018.051.002	Wheel Freehub Kit Cognition NSW XDR Disc Brake / Rim Brake Generation 2 (End Caps Not Included)	NO	QR	11.2018.033.003	Wheel Axle End Cap Assembly Drive Side Rear Zipp Cognition NSW XDR / Campagnolo Generation 1 and XDR Generation 2
				NO	QR	11.2018.048.030	Wheel Axle End Cap Set Rear Zipp Cognition Center Locking Disc Brake Quick Release XDR
				NO	Thru axle 12x135	11.2018.049.050	Wheel Axle End Cap Set Rear Zipp Cognition Center Locking Disc Brake Thru Axle 12x135 XDR
				NO	Thru axle 12x142	11.2018.049.060	Wheel Axle End Cap Set Rear Zipp Cognition Center Locking Disc Brake Thru Axle 12x142 XDR
Zipp ZR1 Rim Brake		00.2018.015.000	Wheel Freehub Kit - XDR Driver Body Kit - 12x142 / QR - Zipp Zr1	NO	QR	11.2018.064.006	Wheel Axle End Cap Set Rear - QR RB - XDR and 11 Speed - ZR1 Hubs
Zipp ZR1 Disc Brake		00.2018.015.000	Wheel Freehub Kit - XDR Driver Body Kit - 12x142 / QR - Zipp Zr1	NO	QR	11.2018.064.015	Wheel Axle End Cap Set Rear - QR Center Locking Disc - ZR1 Hubs
Zipp Super-9 Rim Brake		11.1918.077.000	Wheel Freehub Kit SRAM XDR (Super 9RB Only) (End Caps Not Included)	NO	n/a	n/a	Wheel Axle End Cap Set Rear - 12x142 - XDR and 11 Speed - ZR1 Hubs
Zipp Super-9 Disc Brake		11.2018.062.000	Wheel Freehub Kit SS 176 / 177 SRAM XDR (End Caps Not Included)	NO	QR	11.1918.048.000	Wheel Axle End Cap Rear Zipp 177 Disc Brake Rear 11 Speed QR (Campa, SRAM / Shimano, XDR)
Zipp Firecrest Rim Brake 202 / 303 / 404 / 808		11.2018.062.000	Wheel Freehub Kit SS 176 / 177 SRAM XDR (End Caps Not Included)	NO	Thru axle 12x142	11.2018.046.010	Wheel Axle End Cap Set Rear Zipp 176 Center Locking Disc Brake Thru Axle 12x142
Zipp Firecrest Disc Brake 202 / 303 / 404 / 808		11.2018.062.000	Wheel Freehub Kit SS 176 / 177 SRAM XDR (End Caps Not Included)	NO	QR	11.1918.048.001	Wheel Axle End Cap Rear Zipp 176 / 177 Rim Brake Rear 11-Speed QR (Campa, SRAM / Shimano, XDR)
Zipp 302 Rim Brake		11.2018.062.000	Wheel Freehub Kit SS 176 / 177 SRAM XDR (End Caps Not Included)	NO	QR	11.1918.048.000	Wheel Axle End Cap Rear Zipp 177 Disc Brake Rear 11 Speed QR (Campa, SRAM / Shimano, XDR)
Zipp 302 Disc Brake		11.2018.062.000	Wheel Freehub Kit SS 176 / 177 SRAM XDR (End Caps Not Included)	NO	Thru axle 12x142	11.2018.046.010	Wheel Axle End Cap Set Rear Zipp 176 Center Locking Disc Brake Thru Axle 12x142
Zipp 30 Course Rim Brake		11.2018.062.000	Wheel Freehub Kit SS 176 / 177 SRAM XDR (End Caps Not Included)	NO	QR	11.1918.048.001	Wheel Axle End Cap Rear Zipp 176 / 177 Rim Brake Rear 11-Speed QR (Campa, SRAM / Shimano, XDR)
Zipp 30 Course Disc Brake		11.2018.062.000	Wheel Freehub Kit SS 176 / 177 SRAM XDR (End Caps Not Included)	NO	Thru axle 12x135	n/a	Wheel Axle End Cap Rear Zipp 177 Disc Brake Rear 11 Speed QR (Campa, SRAM / Shimano, XDR)
Zipp 188 hub Rim & Disc Brake		not supported		NO	Thru axle 12x142	11.1918.046.003	Wheel Conversion Caps 177 Disc Rear, 12x142 Thru Axle

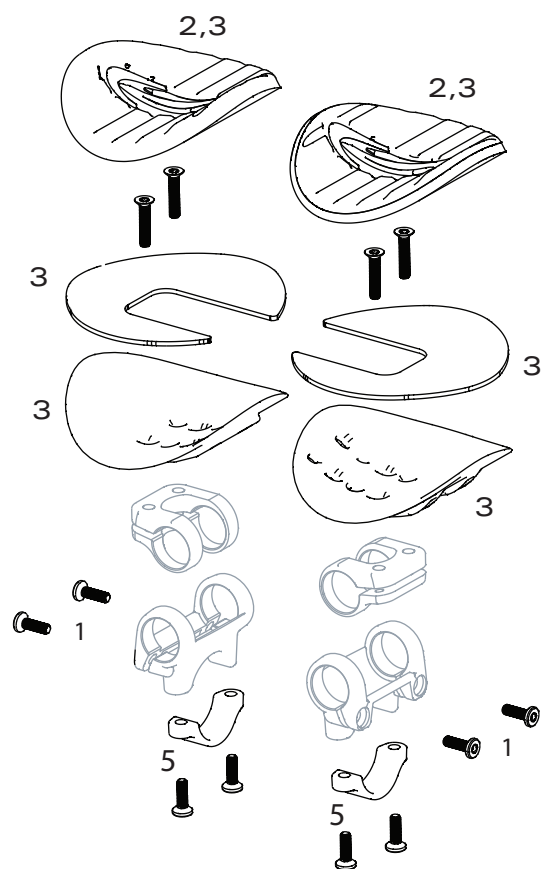
Refer to the Zipp Spare Parts Catalogs and product service guides for more information. Available at www.zipp.com/support/manuals

GEN.000000006050

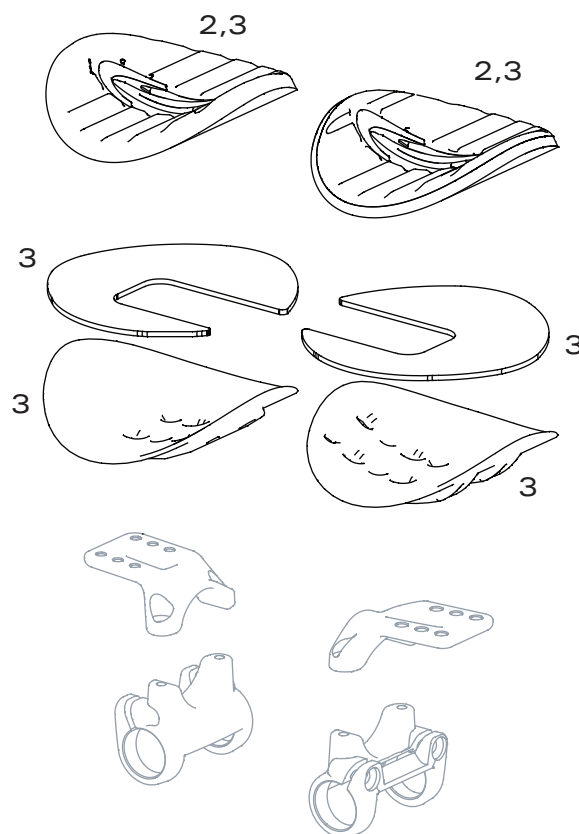




NO.	PART NUMBER	DESCRIPTION
1	11.6618.024.000	HANDLEBAR VUKA CLIP B1 LOW MOUNT ASSEMBLY LEFT WITH BOLTS
2	11.6618.024.010	HANDLEBAR VUKA CLIP B1 LOW MOUNT ASSEMBLY RIGHT WITH BOLTS
3	11.6618.025.000	HANDLEBAR VUKA CLIP B1 TOP MOUNT ASSEMBLY LEFT WITH BOLTS
4	11.6618.025.010	HANDLEBAR VUKA CLIP B1 TOP MOUNT ASSEMBLY RIGHT WITH BOLTS
5	11.6618.026.000	HANDLEBAR VUKA CLIP B1 PAD KIT
6	11.6618.027.000	HANDLEBAR VUKA CLIP B1 ARMREST KIT WITH BOLTS
7	11.6618.030.000	HANDLEBAR VUKA CLIP B1 HIGH MOUNT ANGLE WEDGE KIT (5, 10 AND 15 DEGREE AND BOLTS)

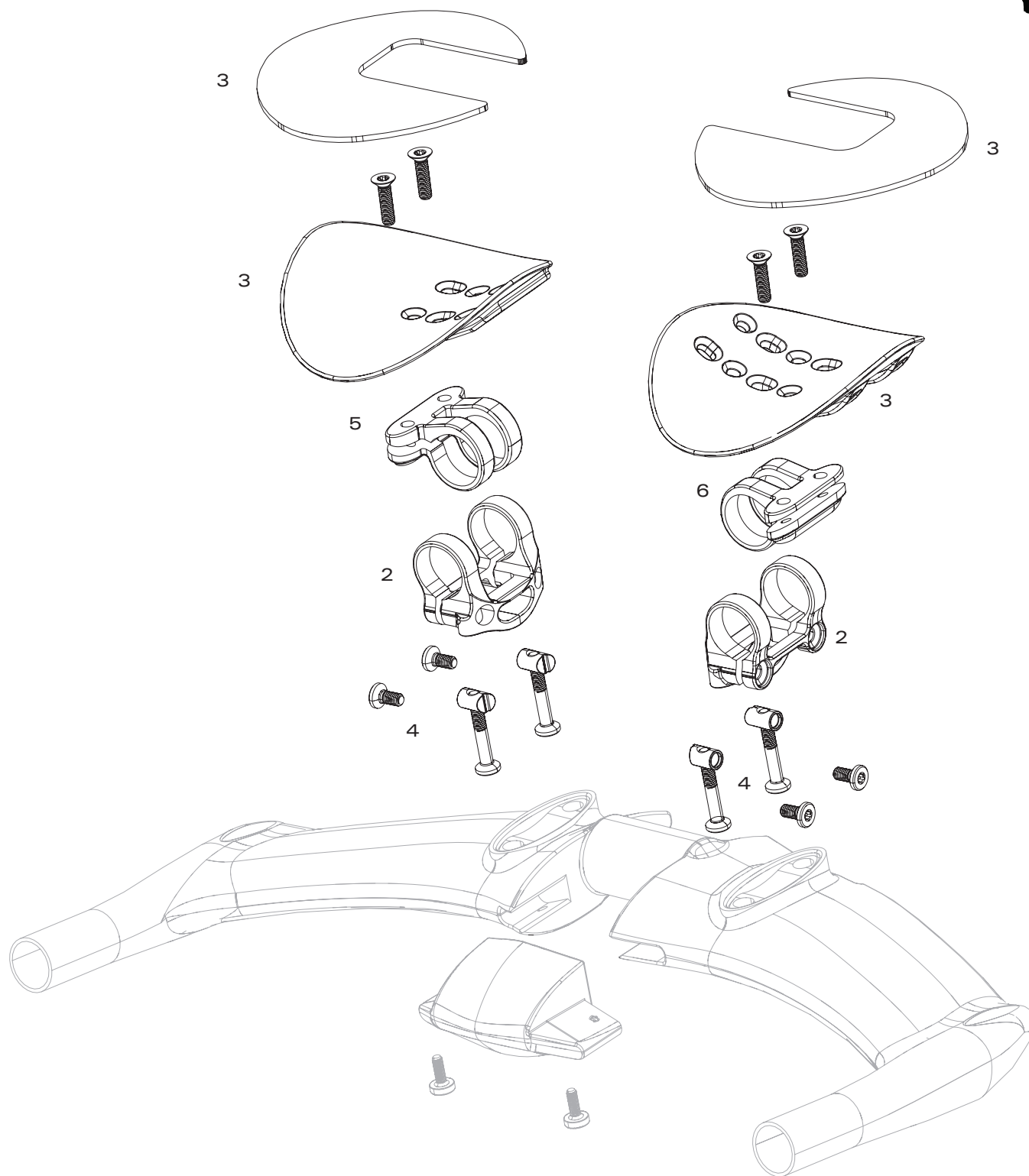


Top Mount Clip

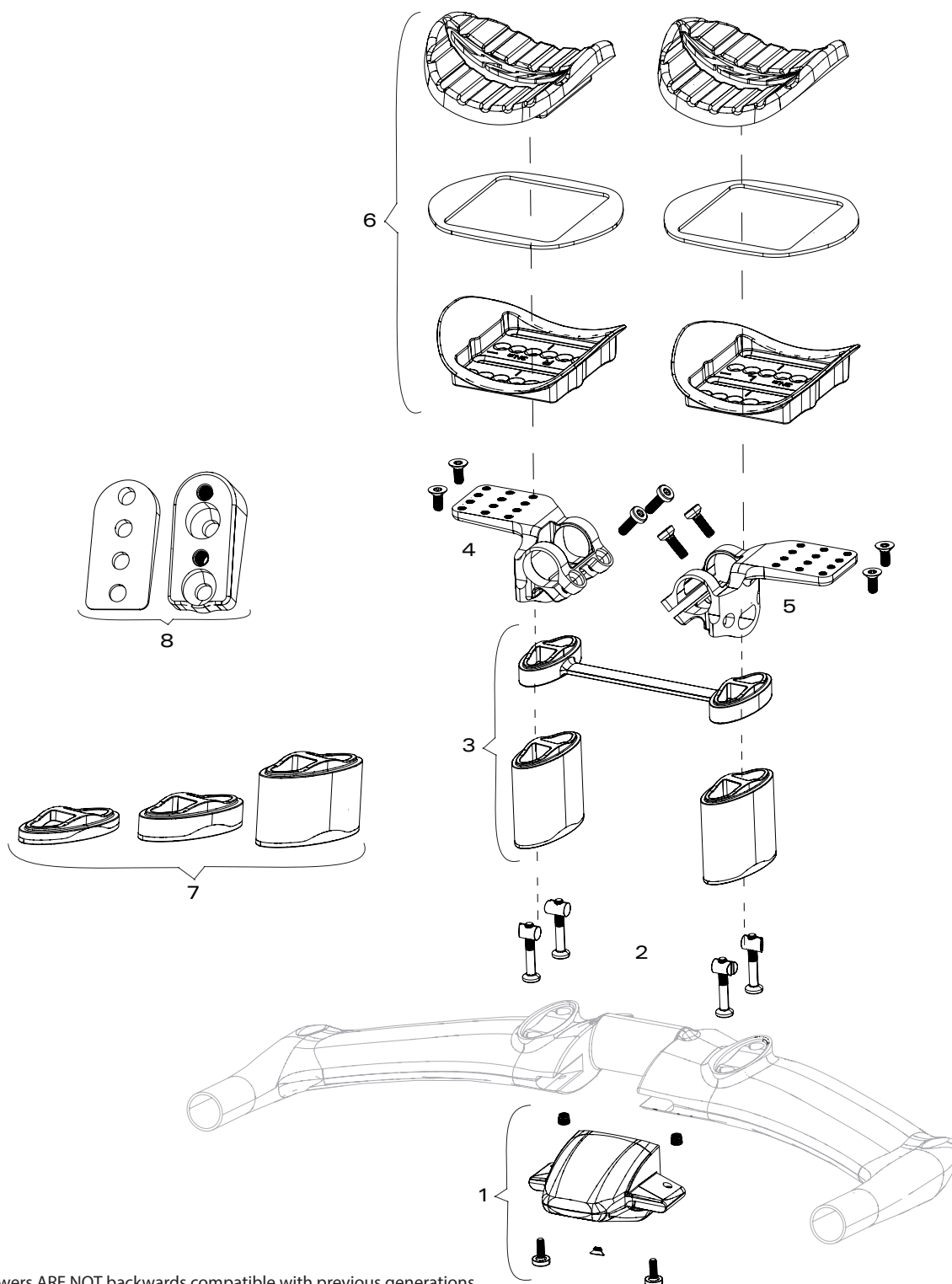


Low Mount Clip

NO.	PART NUMBER	DESCRIPTION
1	11.6618.000.000	HANDLEBAR VUKA ALUMINA CLIP BOLT KIT TOP MOUNT 1 SIDE
2	11.6618.001.000	HANDLEBAR VUKA ALUMINA CLIP ARMREST PAD KIT
3	11.6618.001.001	HANDLEBAR VUKA ALUMINA/STEALTH/AERO ARMREST KIT
4	11.6618.003.000	HANDLEBAR VUKA ALUMINA/CARBON EXTENSIONS END PLUGS
ns	11.6618.023.000	HANDLEBAR BEZEL EVO EXTENSION ETAP CLICS, QTY 2
5	11.6618.014.000	HANDLEBAR VUKA ALUMINA TOP MOUNT LOWER CLAMPS AND BOLTS

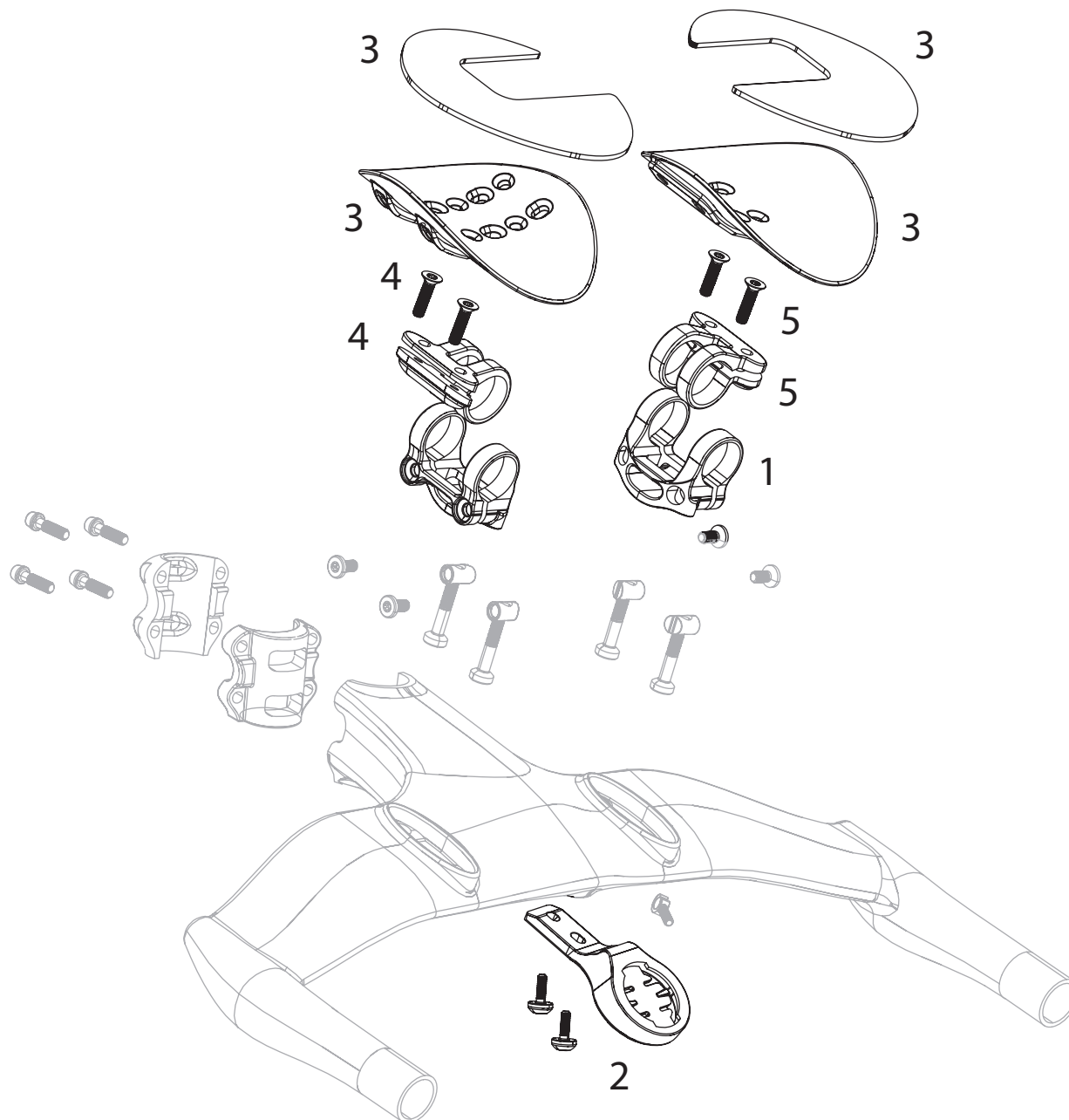


NO.	PART NUMBER	DESCRIPTION
2	11.6618.008.002	HANDLEBAR EXTENSION TOWER (1 SIDE ONLY) VUKA STEALTH
3	11.6618.001.001	HANDLEBAR VUKA ALUMINA/STEALTH/AERO ARMREST KIT
4	11.6618.019.000	HANDLEBAR VUKA AERO EXTENSION TOWER BOLT KIT
5	11.6618.009.000	HANDLEBAR VUKA STEALTH ARMREST CLAMP RIGHT WITH BOLTS 20MM
6	11.6618.009.001	HANDLEBAR VUKA STEALTH ARMREST CLAMP LEFT WITH BOLTS 20MM

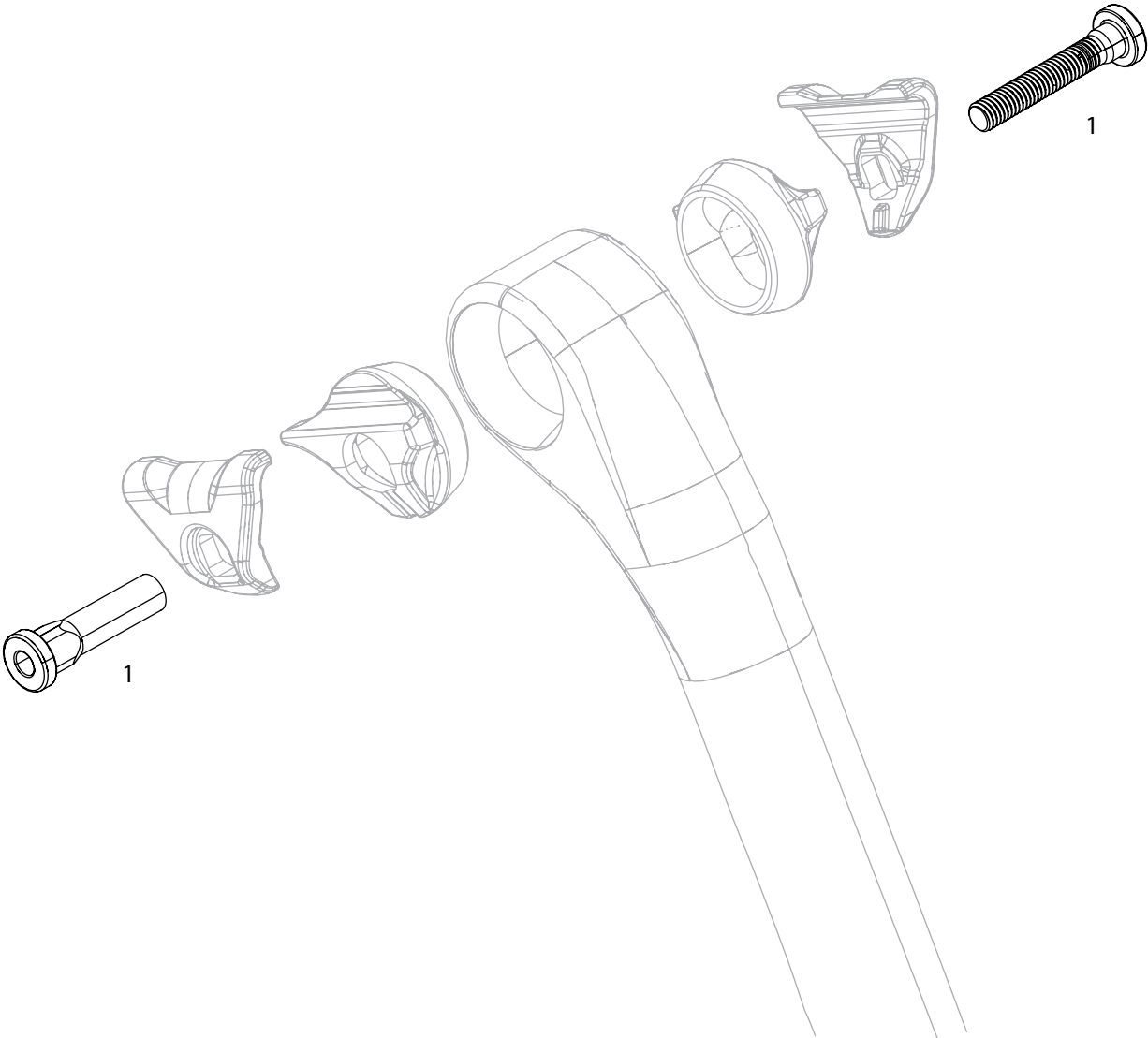


C1 extension towers ARE NOT backwards compatible with previous generations.

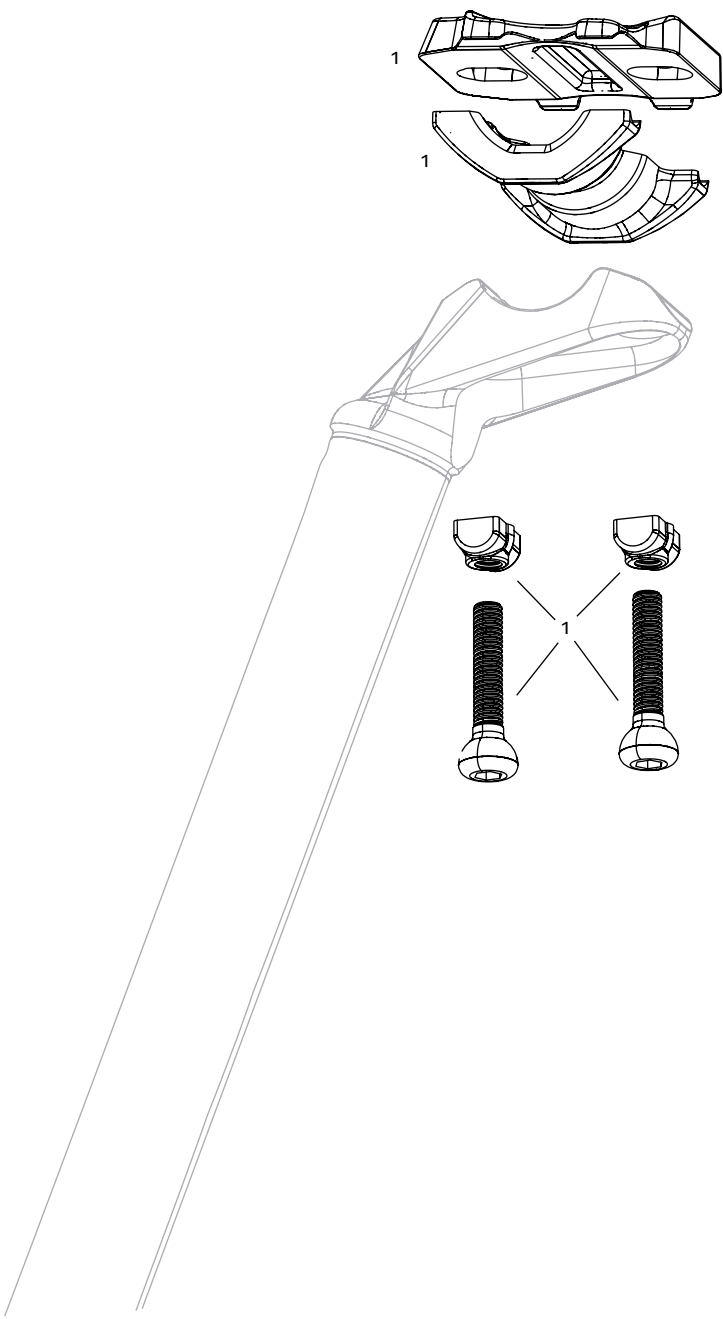
NO.	PART NUMBER	DESCRIPTION
1	11.6618.029.001	HANDLEBAR VUKA AERO CENTER CAP KIT INCLUDING INSERT, PLUGS AND BOLTS
2	11.6618.029.002	HANDLEBAR VUKA AERO C1 TOWER BOLT KIT (4x35MM INCLUDING NUTS)
3	11.6618.029.000	HANDLEBAR VUKA AERO HIGH STACK KIT FOR VUKA AERO C1 (10MM RISER BRIDGE, 50MM RISERS 2 PCS AND BOLTS)
4	11.6618.029.003	HANDLEBAR VUKA AERO C1 CLAMP & ARMREST WING RIGHT INCLUDING BOLTS
5	11.6618.029.004	HANDLEBAR VUKA AERO C1 CLAMP & ARMREST WING LEFT INCLUDING BOLTS
6	11.6618.029.005	HANDLEBAR VUKA AERO C1 ARMREST KIT BOTH SIDES
7	11.6618.029.006	HANDLEBAR VUKA AERO RISER KIT FOR VUKA AERO C1 (2X5MM,4X10MM,2X30MM RISER SETS AND BOLTS)
8	11.6618.029.007	HANDLEBAR VUKA AERO ARMREST ANGLE WEDGE KIT FOR VUKA AERO C1 (WEDGE 5 AND 10 DEGREE AND BOLTS)



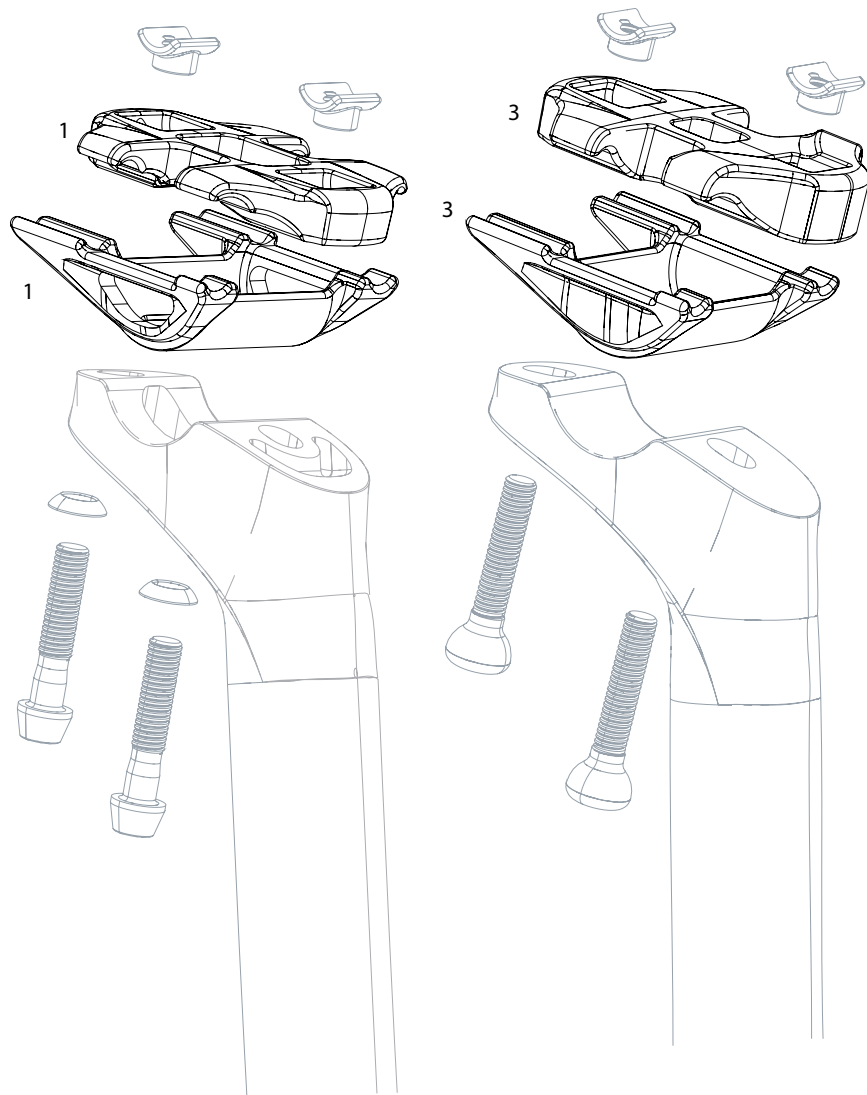
NO.	PART NUMBER	DESCRIPTION
1	11.6618.008.002	HANDLEBAR EXTENSION TOWER (1 SIDE ONLY) VUKA STEALTH
2	11.6618.010.000	HANDLEBAR COMPUTER MOUNT 1/4 TURN WITH T25 16MM TI BOLTS VUKA STEALTH
3	11.6618.001.001	HANDLEBAR VUKA ALUMINA/STEALTH/AERO ARMREST KIT
4	11.6618.009.000	HANDLEBAR VUKA STEALTH ARMREST CLAMP RIGHT WITH BOLTS 20MM
5	11.6618.009.001	HANDLEBAR VUKA STEALTH ARMREST CLAMP LEFT WITH BOLTS 20MM



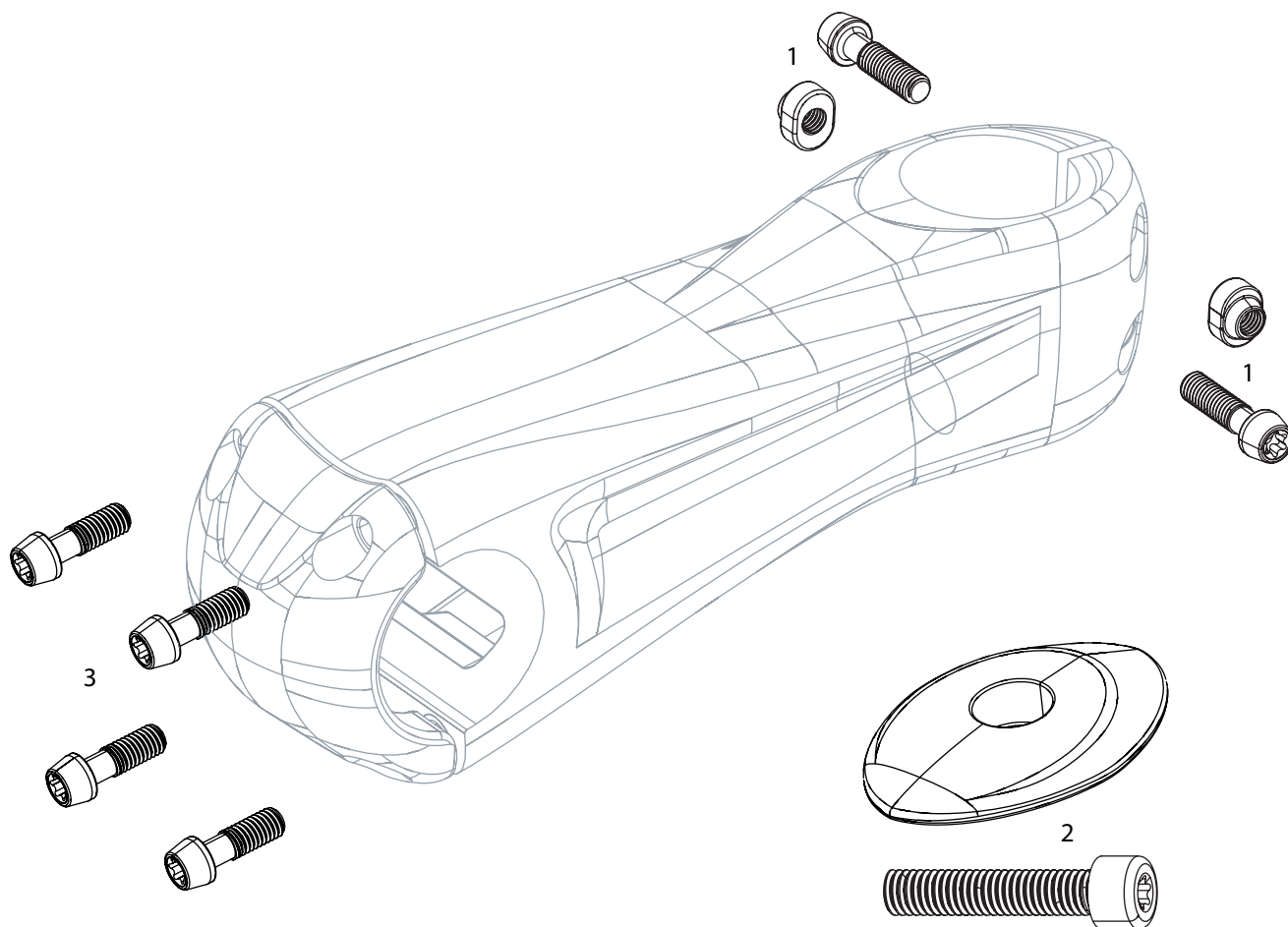
NO.	PART NUMBER	DESCRIPTION
1	11.6818.038.000	SEATPOST BOLT KIT SL SPEED B1 STEEL BLACK



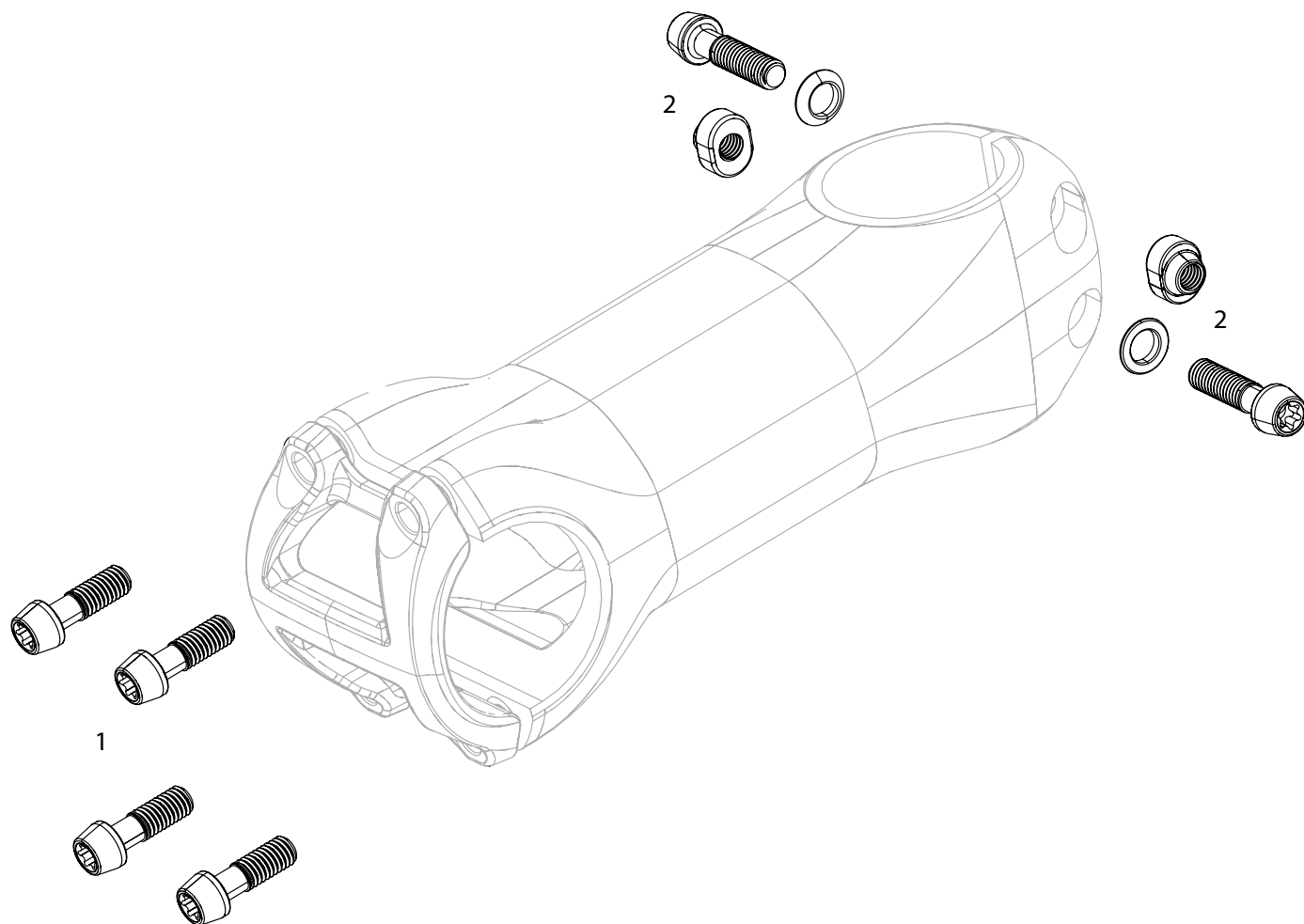
NO.	PART NUMBER	DESCRIPTION
1	11.6818.050.000	SEATPOST BOLTS, NUTS, UPPER AND LOWER CLAMP SERVICE COURSE SL CARBON



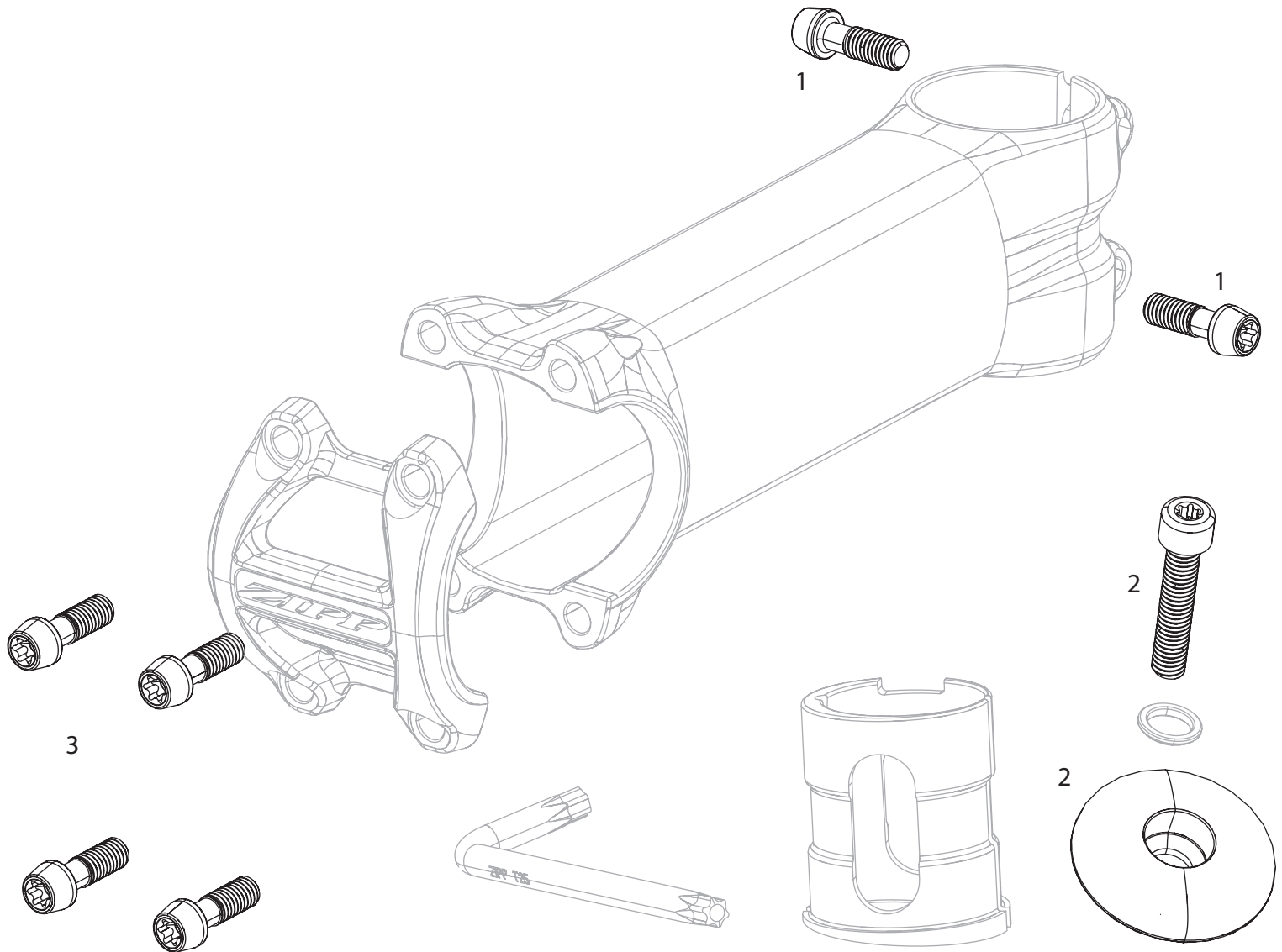
NO.	PART NUMBER	DESCRIPTION
1	11.6818.044.000	SEATPOST TOP AND BOTTOM CLAMP SERVICE COURSE SL SHINY BLACK B1
3	11.6818.046.000	SEATPOST TOP AND BOTTOM CLAMP B1 0 AND 20 OFFSET SERVICE COURSE



NO.	PART NUMBER	DESCRIPTION
1	11.6518.004.000	STEM BOLT KIT STEERER CLAMP SL SPRINT
2	11.6518.006.000	STEM TOP CAP AND ALUMINUM BOLT SL SPRINT
3	11.6518.003.000	STEM BOLT KIT FACEPLATE SL SPRINT



NO.	PART NUMBER	DESCRIPTION
1	11.6518.015.000	STEM BOLT KIT FACEPLATE SL SPEED B1 TITANIUM QTY 4
2	11.6518.016.000	STEM BOLT KIT STEERER CLAMP SL SPEED B1, TITANIUM, QTY 2



NO.	PART NUMBER	DESCRIPTION
1	11.6518.007.000	STEM BOLT KIT SERVICE COURSE STEEL BLACK B1
2	11.6518.010.000	STEM TOP CAP AND ALLOY BOLT SERVICE COURSE SL POLISHED BLACK
3	11.6515.005.001	STEM BOLT KIT SERVICE COURSE SL TITANIUM BEYOND BLACK A1/B1

NOTES



WORLD HEADQUARTERS

SRAM, LLC

1000 West Fulton Market
4th Floor
Chicago, Illinois 60607 USA
Dealers: +1-800-346-2928
Tel: +1-312-664-8800
Fax: +1-312-664-8826

EUROPEAN HEADQUARTERS

SRAM EUROPE SALES & SERVICES BV

Paasbosweg 14-16
3862ZS Nijkerk
The Netherlands
Tel: +31-33-4506060
Fax: +31-33-4570200

ASIAN HEADQUARTERS

SRAM TAIWAN

No. 1598-8 Chung Shan Road
Shen Kang Hsiang, Taichung
County 429
Taiwan R.O.C.
Tel: +886-4-2521-3688
Fax: +886-4-2561-3686