

# ZIP 3

**ZIP<sup>®</sup>**

(english) **spare parts catalog**

---

## **SRAM® ORIGINAL PARTS**

### **CAUTION:**

The SRAM Warranty policy does not cover damages caused by the use of non-SRAM parts.

Use only SRAM parts with SRAM components.

Installation of parts and accessories not originally intended could result in less than optimal performance and/or injury.

For in-depth service information on SRAM products, refer to our website at [www.sram.com](http://www.sram.com). Contact your local SRAM distributor or dealer for ordering information.

Information contained in this publication is subject to change at any time without prior notice. Your product's appearance may vary from the diagrams contained in this catalog.



## TABLE OF CONTENTS

### ZIPP HUB/FREE HUB IDENTIFICATION 6



### ZIPP HUBS - 88/188



88/188

82/182, 202/282

7

8

### ZIPP DISCS/TRACK 9



### ZIPP SPOKES-NIPPLES-WASHERS 10,11



### ZIPP WHEEL/DISC DECALS 12



### ZIPP AEROBARS



Vuka Aero

Vuka Alumina

13

14

### ZIPP CARBON SEATPOSTS 15



### ZIPP ALUMINUM SEATPOSTS 16



### ZIPP CARBON STEMS 17



### ZIPP ALUMINUM STEMS 18



### ZIPP VUMA CHRONO/QUAD CHAIN RINGS 19



### ZIPP VUMA CRANKS BOTTOM BRACKETS 20







## **ZIPP 188 REAR AND 88 FRONT HUBS (2009)**

A completely new design, these hubs have a 17mm axle, pawls with individual leaf springs, 32 teeth ratchet ring, slotted flanges, aero clinch nuts, internal seals and lateral play adjustment. Front end caps are smoke colored with blue/smoke or red rear end caps. Wheel lacing is reversed with 2x drive and radial non-drive spoke pattern. Free hubs are NOT inter-changeable and require a separate conversion kit that includes spacers, seal and matching end cap. Maintenance instructions are available including exploded diagrams. The rear end caps on Shimano hubs changed from smoke to red in November 2009.

In May 2010 the 88 front hub spoke retention ring and clinch nut were altered. The spoke retention ring was made thinner, clinch nut diameter enlarged and the boss shape changed.

88/188 – October 2011

Re-design (V7) and improve the current 88/188 hubs with canted, rear, non-drive flange and rear axle changed to accommodate 7.5mm wider non-drive bearing location. Hub are offered in two color options - falcon gray and beyond black across the wheel line, (October 2011).

These changes improve rear 188 hub axle durability and allow 6% stiffer wheels to be built with the same spoke tension. On the 88 front hub, the only change is the color options – the silver and ZedTech hub 88/188 hub versions are discontinued.

Note: the rear 188 hub shell and axle are NOT compatible with the earlier silver version. The bearings (61803) end caps and seals remain unchanged.

## **Free hubs Zipp 188 hubs 2009 –**

Major changes in pawl design and shape. Each pawl now has its own leaf spring. Pawl socket ring is scalloped, seal is black. These free hubs are NOT interchangeable with earlier 182 or 208 models and are only sold in a conversion kit with seals, shims and endcaps. Note the 61803 bearings to accommodate the larger 17mm axle.

## **ZIPP 182 REAR and 82 FRONT HUBS (2006-2008)**

These hubs are distinguished from the 202/84 model by brightly colored free hub bodies (Shimano red, Campagnolo blue), a plastic retaining ring behind the carbon hub caps, a reduction in weight (30g), redesigned pawl springs and an increase in the rear ear flange dimensions (52mm).

## **Free hubs Zipp 182 - 208 hubs 2005-2008**

Machined and forged / Shimano red Campagnolo blue

The difference between machined and forged Shimano free hub bodies is a dull, deeper maroon, rougher surface finish and a scribed ring 1/3 towards the seal between the body and the red pawl carrier in the forged body. Since mid year 2005, Shimano free hubs are red and Campagnolo are blue. These bodies have 2 x 61082 bearings and a red seal between the pawl carrier and the main body.

## **ZIPP 202 REAR and 84 FRONT hubs (2002-2005)**

Al alloy silver polished hub bodies, most easily recognized by carbon weave protective end caps on both front and rear hubs. Available for either Shimano or Campagnolo, the bodies are interchangeable, but are not compatible with earlier models due to over-sized 15mm axle on the 202 rear and 84 front hubs.

There are 2 versions of the silver free hub body for this hub model. The 202W free hub has a solid silver ring on the free hub side adjoining the pawls, while the 202P has grooves that are machined all the way through with a slight 'lip' at the end of each spline.

Status discontinued (2012), spare parts (e.g. axles and non-drive end caps) may not be available or will be very hard to find.

## **Free Hubs 202P and 202W models**

This is where we find the largest confusion. 202P has the grooves extending all the way across the main body with a small lip on the splines. The 202W (Shimano) has a solid silver ring at the back between the pawl carrier and the main body, the grooves are blocked.

## **ZIPP 282 REAR AND 102 FRONT HUBS (1999 to 2001)**

The 102 front and 282 rear hubs are an ideal combination of performance, weight, durability, and value. Recognizable from other ZIPP hubs by their black anodized all aluminum hub construction; the 102 and 282 are available for both Shimano 8/9 speed and Campagnolo 9/10 speed systems. The 102 and 282 are the first ZIPP hubs to utilize butted or oval straight pull spokes. Free-hub bodies are interchangeable. Both front and rear hubs turn on the highest quality industrial cartridge bearings available. These bearings were used in a number of subsequent ZIPP wheel sets. If you need parts for the 2 pawl earlier 282 hub (often called the Swiss version), you must change axle, end caps and free-hub to upgrade to the 3 pawl (USA) model. Hub maintenance notes. Status: discontinued, parts are difficult to find.

Note: early 282 hubs may be silver. When interchanging free hub bodies, check to see if the existing hub uses two or three pawls in the engagement mechanism and check bearing seal color.

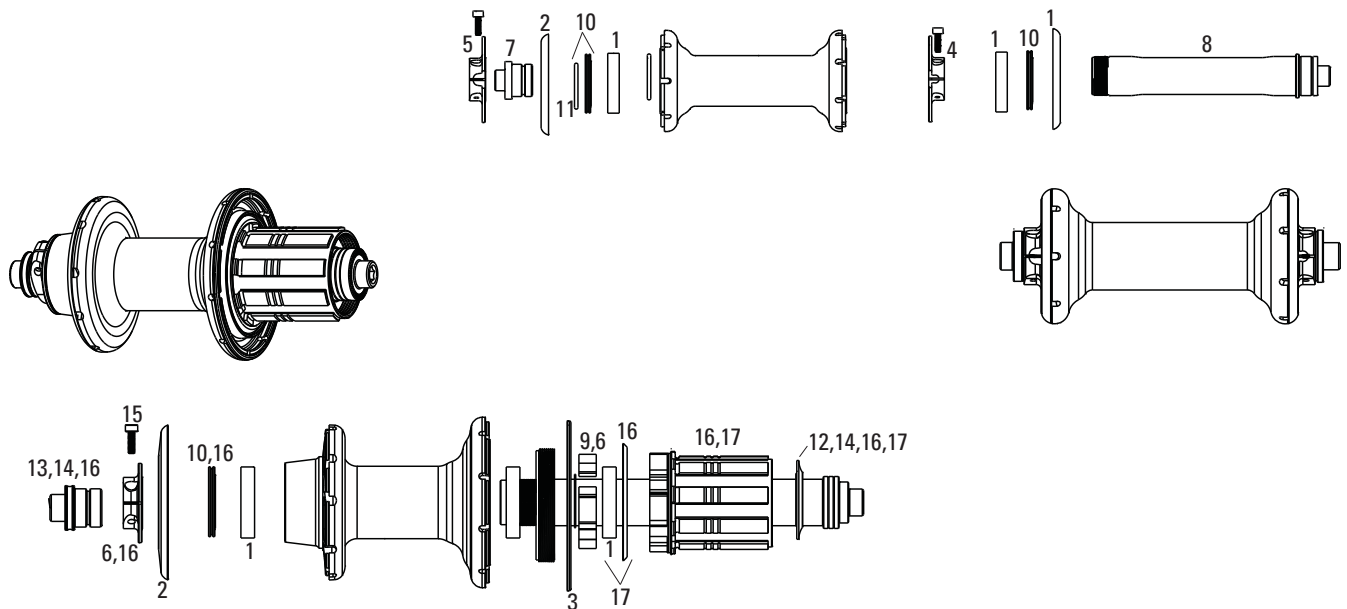
In mid-2001 a 'USA' built version of the 282 was introduced. It is laser etched in the center of the hub flange with "USA" in silver on the black hub shell. Free-hub bodies are not inter-changeable between earlier 'swiss' versions and the usa version. Model 102 front: flange diameter = 23mm, center to flange = 39mm. Model 282 rear free hub: drive side flange = 51mm, non-drive flange = 33.5mm, center to drive side flange = 12mm, center to non-drive flange = 35mm. Maintenance notes.

Free hub bodies: 'USA' have blue bearings seals, 'Swiss' has black bearing seals - not inter-changeable.

## **Free Hubs 282 models**

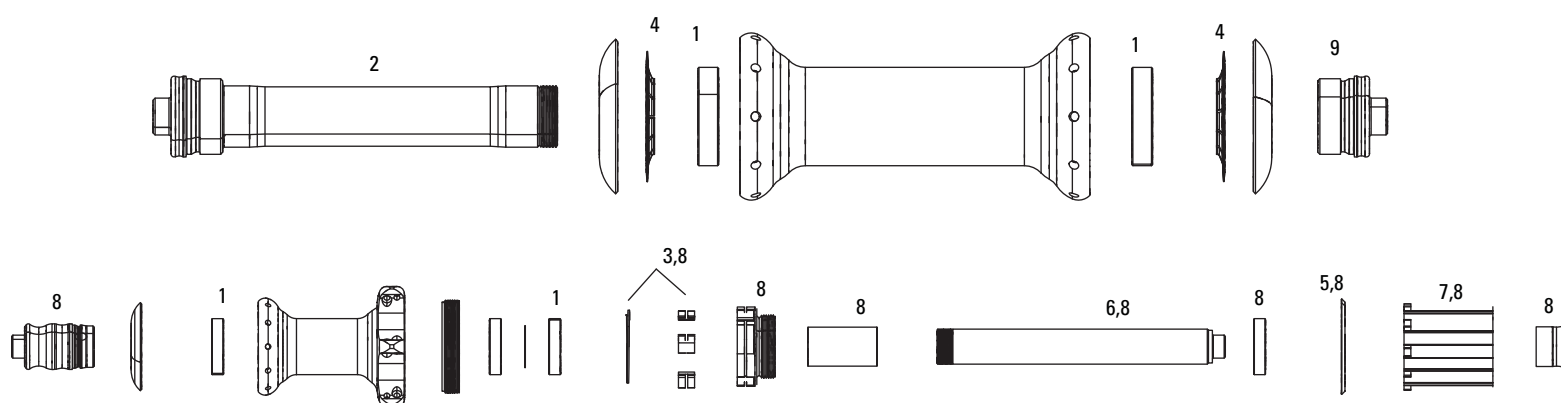
Champagne color with a solid back ring between the splines and the pawl carrier.

## ZIPP HUBS - 88/188 (2009-Present)



### No. Part Number Description

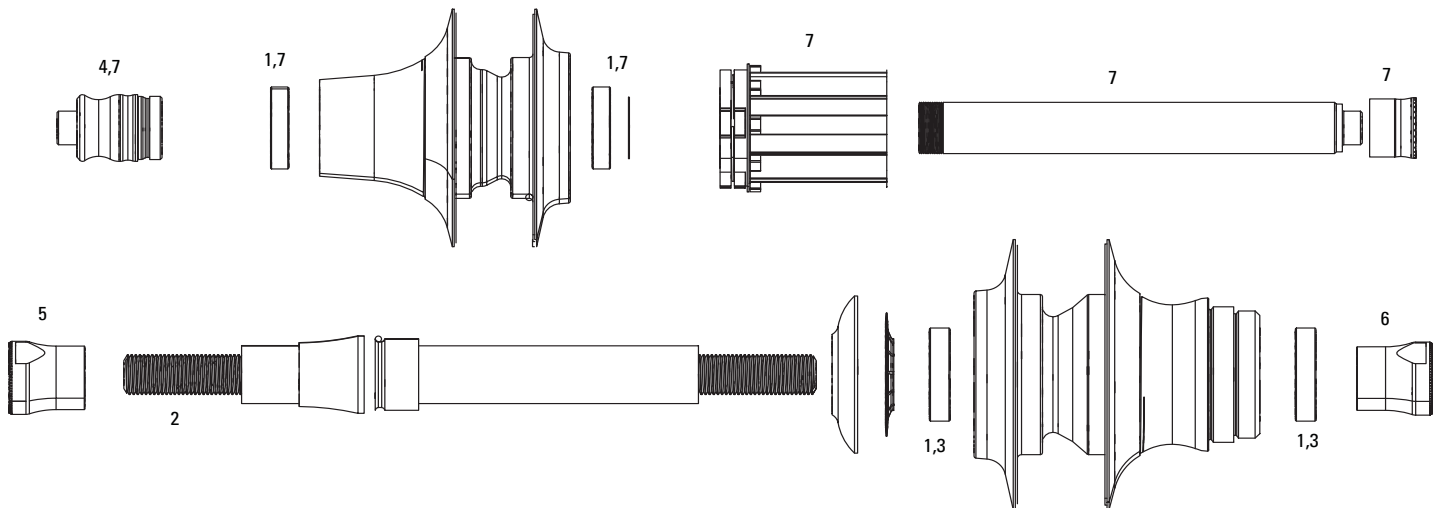
1	11.1915.028.000	Hub Bearings Front or Rear Zipp 88/188 Pair
1	11.1915.028.010	Hub Bearings Front or Rear Zipp 88/188 Pair Ceramic
1	11.2018.001.000	REINFORCE RING RADIAL BLK FRT 88V7
2	11.1915.030.000	Reinforced Ring Radial Front Zipp 88 Smoke
2	11.1915.042.000	Reinforced Ring Non-Drive Smoke Zipp 188 Smoke
2	11.2018.001.001	REINFORCE RING NONDRIVE BLK REAR 188V7
3	11.1915.043.000	Reinforced Ring Radial Smoke Zipp 188 Smoke
3	11.2018.001.002	REINFORCE RING RADIAL BLK REAR 188V7
4	11.1915.031.000	Clinch Nut Non-Threaded Silver Front Zipp 88 with Screw
4	11.2018.000.000	CLINCH NUT & SCREW NOTHRED BLK FRT 88V7
5	11.1915.032.000	Clinch Nut Threaded Silver Front Zipp 88 with Screw
5	11.2018.000.001	CLINCH NUT & SCREW THREAD BLK FRT 88V7
6	11.1915.044.000	Clinch Nut Threaded Silver Rear Zipp 188 with Screw
6	11.2018.000.002	CLINCH NUT & SCREW THREAD BLK REAR 188V7
7	11.1915.033.000	Axle End Cap Front Zipp 88 Hub
8	11.1915.034.000	Front Axle with End Cap Zipp 88 Hub
8	11.1915.086.000	Zipp Axle for 188 Rear Hub Black
9	11.1915.035.000	Spring and Pawl Set for Zipp 188 Rear Hub Qty 4
10	11.1915.036.000	Bearing Shield Front or Rear Zipp 88/188
11	11.1915.037.000	O-Ring Bearing Shield Front or Rear Zipp 88/188 Hub Qty 5
12	11.1915.040.000	Dust Cap Shield Freehub Zipp 188 Campagnolo
12	11.1915.040.010	Dust Cap Shield Freehub Zipp 188 SRAM/Shimano
13	11.1915.045.000	Axle End Cap Rear Zipp 188 SRAM/Shimano
13	11.1915.045.010	Axle End Cap Rear Zipp 188 Campagnolo
14	11.1915.047.000	Axle Assembly Zipp 188 Rear SRAM/Shimano Freehub with End Caps
15	11.2015.036.000	Clinch Nut Set Screw Zipp 88/188 M25x8
16	11.2100.094.000	Freehub Conversion Kit 188 SRAM/Shimano
16	11.2100.094.010	Freehub Conversion Kit 188 Campy
16	11.2100.094.020	Freehub Conversion Kit 188 SRAM/Shimano Ceramic
16	11.2100.094.030	Freehub Conversion Kit 188 Campy Ceramic
17	11.2100.108.000	Road Conversion Kit Disc 188 (Super 9) Axle & SRAM/Shimano FH
17	11.2100.109.000	Road Conversion Kit Disc 188 (Super 9) Axle & Campy FH
ns	11.1915.038.000	Freehub Body Spacer Zipp 188 Rear Qty 2
ns	11.1915.039.000	O-Ring End Cap Front or Rear Zipp 88/188 Qty 5
ns	11.2100.107.000	Track Axle Conversion Kit Disc 188 (Super 9)



No.	Part Number	Description
-----	-------------	-------------

1	11.1915.049.000	Hub Bearings Front or Rear Zipp 82/182 Pair
1	11.1915.049.010	Hub Bearings Front or Rear Zipp 82/182 Pair Ceramic
2	11.1915.051.000	Spacer Front 2006 Zipp 82 Hub
3	11.1915.052.000	Spring and Pawl Set for Zipp 182 Rear Hub Qty 5
4	11.1915.053.000	Retaining Ring for Carbon Cap Zipp 82/182 Hub
5	11.1915.054.000	Freehub Body Spacer Zipp 182 Rear
6	11.1915.055.000	Axle Rear 2006 Zipp 182 Hub
7	11.1915.056.000	Freehub Body SRAM/Shimano Zipp 182 Red
7	11.1915.056.010	Freehub Body Campagnolo Zipp 182 Blue
7	11.1915.056.020	Freehub Body SRAM/Shimano Zipp 182 Red Ceramic
7	11.1915.056.030	Freehub Body Campagnolo Zipp 182 Blue Ceramic
7	11.1915.062.000	Freehub Body SRAM/Shimano Zipp 282E
7	11.1915.062.010	Freehub Body Campagnolo Zipp 282E
7	11.1915.079.000	Freehub Body SRAM/Shimano 10 Speed Zipp 202 04
8	11.2100.029.000	Road Conversion Kit 06 Disc 182 Axle & SRAM/Shimano FH
8	11.2100.031.000	Road Conversion Kit 06 Disc 182 Axle & Campy FH
ns	11.2100.027.000	Track Axle Conversion Kit 07 Disc 182
9	11.2000.009.000	2006 Front 82 End Cap





No.	Part Number	Description
-----	-------------	-------------

1	11.1915.064.000	Hub Bearings Front or Rear Pair Zipp Super 9
1	11.1915.064.010	Hub Bearings Front or Rear Pair Zipp Super 9 Ceramic
ns	11.1915.066.000	Zipp Disc Spacer Wheelchair Anodized
ns	11.1915.066.010	Zipp Disc Axle Sleeve 99
ns	11.1915.066.020	Zipp Disc Axle Wheelchair
ns	11.1915.068.000	Zipp Disc Track Cap Kit Front Qty 2
ns	11.1915.068.010	Zipp Disc Track Locknut Rear Black
ns	11.1915.070.000	Zipp Disc Track Locknut and Spacer Black
2	11.1915.072.000	Zipp Disc Track Axle Threaded Stud
ns	11.1915.073.000	Zipp Disc Track Drive Spacer
3	11.1915.074.000	Zipp Disc Bearing R6 Pair
3	11.1915.074.010	Zipp Disc Bearing R8 Wheelchair Hub Pair
ns	11.1915.075.000	Zipp Disc Hub Wave Spring
4	11.1915.076.000	Zipp Disc Hub End Cap Non Drive 2006
5	11.1915.069.000	Zipp Disc Track Axle Nut M10
6	11.1915.069.010	Zipp Disc Track Axle Nut M9
ns	11.2000.002.000	Front Track Caps and Screws (Front Disc Only)
ns	11.2015.034.000	High Flange Track Zipp Hub Axle Kit Front
ns	11.2015.034.010	High Flange Track Zipp Hub Axle Kit Rear
ns	11.2100.012.000	Rear Track Caps and Screws (Rear Wheel and Disc)
7	11.2100.029.000	Road Conversion Kit 06 Disc 182 Axle & SRAM/Shimano FH
7	11.2100.031.000	Road Conversion Kit 06 Disc 182 Axle & Campy FH

## ZIPP SPOKES - NIPPLES - WASHERS



Part Number	Description
11.1915.023.000	Spokes & Nipples 3-pack 220mm CX-Ray Straight-Pull ExternalSilver
11.1915.023.010	Spokes & Nipples 3-pack 196mm CX-Ray Straight-Pull ExternalSilver
11.1915.023.020	Spokes & Nipples 3-pack 198mm CX-Ray Straight-Pull ExternalSilver
11.1915.023.030	Spokes & Nipples 3-pack 206mm CX-Ray Straight-Pull ExternalSilver
11.1915.023.040	Spokes & Nipples 3-pack 210mm CX-Ray Straight-Pull ExternalSilver
11.1915.023.050	Spokes & Nipples 3-pack 218mm CX-Ray Straight-Pull ExternalSilver
11.1915.023.060	Spokes & Nipples 3-pack 222mm CX-Ray Straight-Pull ExternalSilver
11.1915.023.070	Spokes & Nipples 3-pack 224mm CX-Ray Straight-Pull ExternalSilver
11.1915.023.080	Spokes & Nipples 3-pack 226mm CX-Ray Straight-Pull ExternalSilver
11.1915.023.090	Spokes & Nipples 3-pack 232mm CX-Ray Straight-Pull ExternalSilver
11.1915.023.100	Spokes & Nipples 3-pack 234mm CX-Ray Straight-Pull ExternalSilver
11.1915.023.110	Spokes & Nipples 3-pack 236mm CX-Ray Straight-Pull ExternalSilver
11.1915.023.120	Spokes & Nipples 3-pack 238mm CX-Ray Straight-Pull ExternalSilver
11.1915.023.130	Spokes & Nipples 3-pack 240mm CX-Ray Straight-Pull ExternalSilver
11.1915.023.140	Spokes & Nipples 3-pack 242mm CX-Ray Straight-Pull ExternalSilver
11.1915.023.150	Spokes & Nipples 3-pack 244mm CX-Ray Straight-Pull ExternalSilver
11.1915.023.160	Spokes & Nipples 3-pack 246mm CX-Ray Straight-Pull ExternalSilver
11.1915.023.170	Spokes & Nipples 3-pack 248mm CX-Ray Straight-Pull ExternalSilver
11.1915.023.190	Spokes & Nipples 3-pack 256mm CX-Ray Straight-Pull ExternalSilver
11.1915.023.200	Spokes & Nipples 3-pack 258mm CX-Ray Straight-Pull ExternalSilver
11.1915.023.210	Spokes & Nipples 3-pack 260mm CX-Ray Straight-Pull ExternalSilver
11.1915.023.220	Spokes & Nipples 3-pack 262mm CX-Ray Straight-Pull ExternalSilver
11.1915.023.230	Spokes & Nipples 3-pack 266mm CX-Ray Straight-Pull ExternalSilver
11.1915.023.240	Spokes & Nipples 3-pack 268mm CX-Ray Straight-Pull ExternalSilver
11.1915.023.250	Spokes & Nipples 3-pack 270mm CX-Ray Straight-Pull ExternalSilver
11.1915.023.260	Spokes & Nipples 3-pack 272mm CX-Ray Straight-Pull ExternalSilver
11.1915.023.270	Spokes & Nipples 3-pack 274mm CX-Ray Straight-Pull ExternalSilver
11.1915.023.280	Spokes & Nipples 3-pack 276mm CX-Ray Straight-Pull ExternalSilver
11.1915.023.290	Spokes & Nipples 3-pack 278mm CX-Ray Straight-Pull ExternalSilver
11.1915.023.300	Spokes & Nipples 3-pack 280mm CX-Ray Straight-Pull ExternalSilver
11.1915.023.310	Spokes & Nipples 3-pack 284mm CX-Ray Straight-Pull ExternalSilver
11.1915.023.320	Spokes & Nipples 3-pack 292mm CX-Ray Straight-Pull ExternalSilver
11.1915.080.000	Spokes & Nipples 3-pack 222mm CX-Ray Straight-Pull ExternalBlack Chrome
11.1915.080.010	Spokes & Nipples 3-pack 224mm CX-Ray Straight-Pull ExternalBlack Chrome
11.1915.080.020	Spokes & Nipples 3-pack 226mm CX-Ray Straight-Pull ExternalBlack Chrome
11.1915.080.030	Spokes & Nipples 3-pack 234mm CX-Ray Straight-Pull ExternalBlack Chrome
11.1915.080.040	Spokes & Nipples 3-pack 244mm CX-Ray Straight-Pull ExternalBlack Chrome
11.1915.080.050	Spokes & Nipples 3-pack 246mm CX-Ray Straight-Pull ExternalBlack Chrome
11.1915.080.060	Spokes & Nipples 3-pack 248mm CX-Ray Straight-Pull ExternalBlack Chrome
11.1915.080.070	Spokes & Nipples 3-pack 258mm CX-Ray Straight-Pull ExternalBlack Chrome
11.1915.080.080	Spokes & Nipples 3-pack 260mm CX-Ray Straight-Pull ExternalBlack Chrome
11.1915.080.090	Spokes & Nipples 3-pack 262mm CX-Ray Straight-Pull ExternalBlack Chrome
11.1915.080.100	Spokes & Nipples 3-pack 272mm CX-Ray Straight-Pull ExternalBlack Chrome
11.1915.080.110	Spokes & Nipples 3-pack 276mm CX-Ray Straight-Pull ExternalBlack Chrome
11.1915.080.120	Spokes & Nipples 3-pack 184mm CX-Ray Straight-Pull ExternalBlack Chrome
11.1915.080.130	Spokes & Nipples 3-pack 198mm CX-Ray Straight-Pull ExternalBlack Chrome
11.1915.080.140	Spokes & Nipples 3-pack 210mm CX-Ray Straight-Pull ExternalBlack Chrome
11.1915.080.150	Spokes & Nipples 3-pack 270mm CX-Ray Straight-Pull ExternalBlack Chrome
11.1915.080.160	Spokes & Nipples 3-pack 232mm CX-Ray Straight-Pull ExternalBlack Chrome

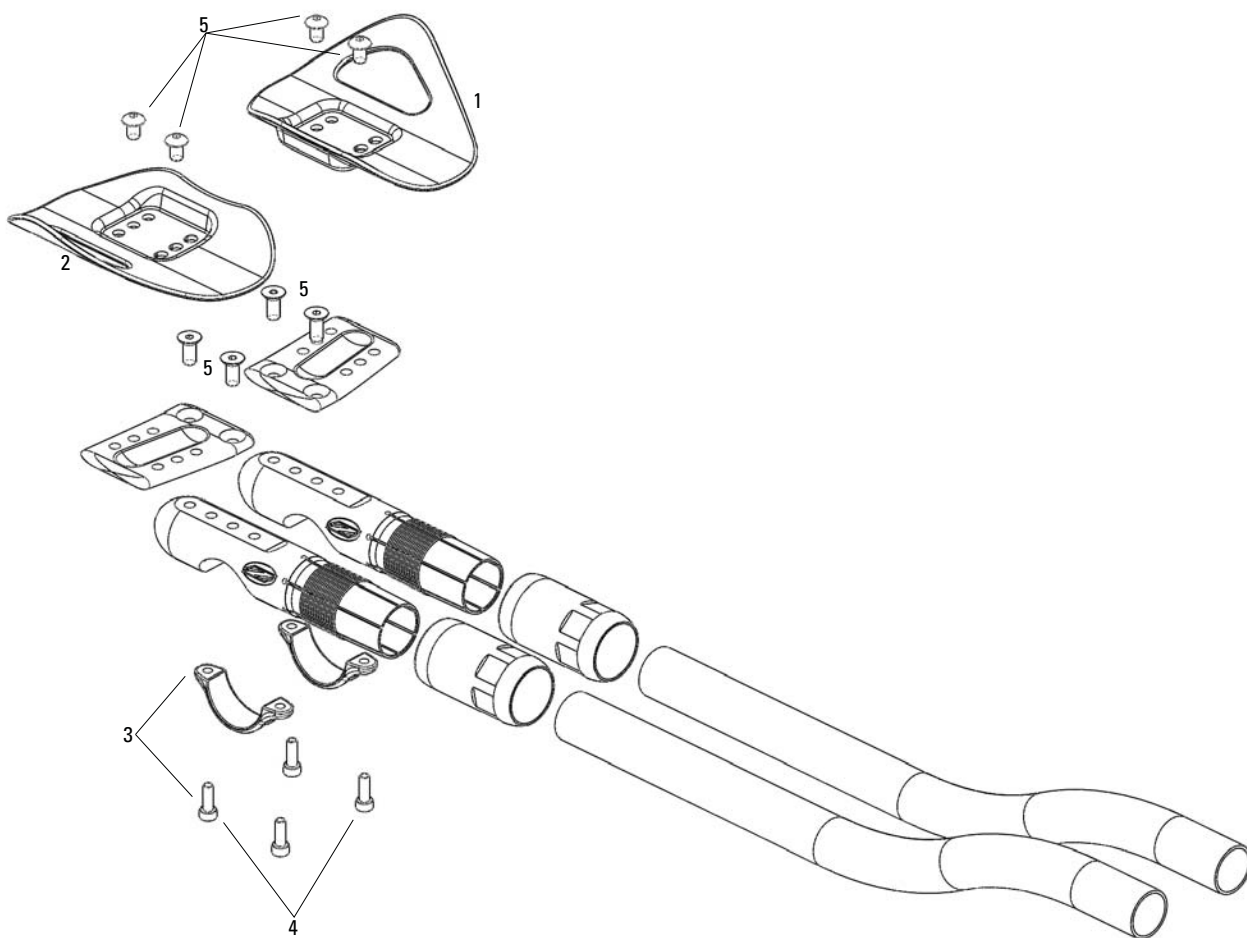
## ZIPP SPOKES - NIPPLES - WASHERS continued



Part Number	Description
11.1915.024.000	Spokes & Nipples 3-pack 210mm CX-Ray J-Bend External Silver
11.1915.024.010	Spokes & Nipples 3-pack 212mm CX-Ray J-Bend External Silver
11.1915.024.020	Spokes & Nipples 3-pack 216mm CX-Ray J-Bend External Silver
11.1915.024.030	Spokes & Nipples 3-pack 224mm CX-Ray J-Bend External Silver
11.1915.024.040	Spokes & Nipples 3-pack 226mm CX-Ray J-Bend External Silver
11.1915.024.050	Spokes & Nipples 3-pack 228mm CX-Ray J-Bend External Silver
11.1915.024.060	Spokes & Nipples 3-pack 230mm CX-Ray J-Bend External Silver
11.1915.024.070	Spokes & Nipples 3-pack 232mm CX-Ray J-Bend External Silver
11.1915.024.080	Spokes & Nipples 3-pack 234mm CX-Ray J-Bend External Silver
11.1915.024.090	Spokes & Nipples 3-pack 240mm CX-Ray J-Bend External Silver
11.1915.024.100	Spokes & Nipples 3-pack 246mm CX-Ray J-Bend External Silver
11.1915.024.110	Spokes & Nipples 3-pack 248mm CX-Ray J-Bend External Silver
11.1915.024.120	Spokes & Nipples 3-pack 250mm CX-Ray J-Bend External Silver
11.1915.024.130	Spokes & Nipples 3-pack 252mm CX-Ray J-Bend External Silver
11.1915.024.140	Spokes & Nipples 3-pack 254mm CX-Ray J-Bend External Silver
11.1915.024.150	Spokes & Nipples 3-pack 256mm CX-Ray J-Bend External Silver
11.1915.024.160	Spokes & Nipples 3-pack 258mm CX-Ray J-Bend External Silver
11.1915.024.170	Spokes & Nipples 3-pack 260mm CX-Ray J-Bend External Silver
11.1915.024.180	Spokes & Nipples 3-pack 262mm CX-Ray J-Bend External Silver
11.1915.024.190	Spokes & Nipples 3-pack 264mm CX-Ray J-Bend External Silver
11.1915.024.200	Spokes & Nipples 3-pack 270mm CX-Ray J-Bend External Silver
11.1915.024.210	Spokes & Nipples 3-pack 274mm CX-Ray J-Bend External Silver
11.1915.024.220	Spokes & Nipples 3-pack 278mm CX-Ray J-Bend External Silver
11.1915.024.230	Spokes & Nipples 3-pack 280mm CX-Ray J-Bend External Silver
11.1915.024.240	Spokes & Nipples 3-pack 286mm CX-Ray J-Bend External Silver
11.1915.024.250	Spokes & Nipples 3-pack 288mm CX-Ray J-Bend External Silver
11.1915.024.260	Spokes & Nipples 3-pack 290mm CX-Ray J-Bend External Silver
11.1915.024.270	Spokes & Nipples 3-pack 204mm CX-Ray J-Bend External Silver
11.1915.024.280	Spokes & Nipples 3-pack 238mm CX-Ray J-Bend External Silver
11.1915.024.290	Spokes & Nipples 3-pack 202mm CX-Ray J-Bend External Silver
11.1915.026.000	External Locking Nipples 20-pack for 101 Wheels 2.0 x 14
11.1915.026.010	External Nipples 50-pack for all Zipp Wheels Except 101 2.0x 14
11.1915.026.020	Nipple Washers Oval 50-pack for Firecrest Wheels
11.1915.026.030	Internal for SRAM S40 S60 S80 & Flashpoint Wheels
11.1915.026.040	External Locking Nipples Black 20-pack for 101 Wheels 2.0 x14
11.1915.026.050	External Nipples 50-pack for all Zipp Wheels Except 101 2.0x 14
11.1915.077.000	Zipp T-Handle with 55mm and 150mm Nipple Drivers

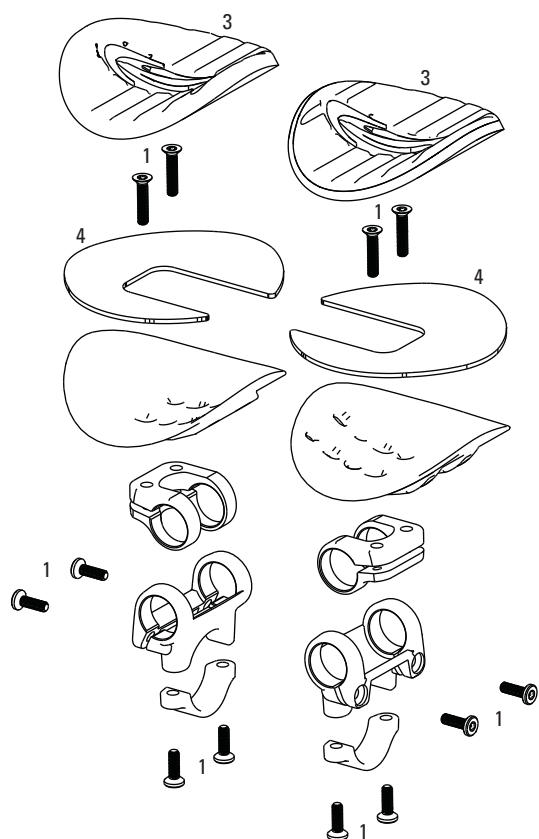


No.	Part Number	Description
	11.1915.022.000	Decal Set 101 Complete for One Clincher
	11.1915.022.010	Decal Set 202 Complete for One Tubular
	11.1915.022.020	Decal Set 303 Complete for One Tubular or Clincher
	11.1915.022.030	Decal Set 404 700C Complete for One Tubular or Clincher
	11.1915.022.040	Decal Set 404 650C Complete for One Tubular or Clincher
	11.1915.022.060	Decal Set 808/1080 Complete for One Tubular or Clincher
	11.1915.022.070	Decal Set Disc Complete for One Disc Wheel, Incl Valve Patches
	11.1915.022.080	Decal Set Team Issue Complete for One Tubular or Clincher
	11.1915.022.090	Decal Set Pre-2008 202
	11.1915.022.100	Decal Set Pre-2008 303
	11.1915.022.110	Decal Set Pre-2008 808
	11.1915.087.000	Decal Set 202 Black Complete for One Tubular
	11.1915.087.010	Decal Set 303 Black Complete for One Firecrest Tubular or Firecrest Carbon Clincher
	11.1915.087.020	Decal Set 404 Black 700C Complete for One Firecrest Tubular or Firecrest Carbon Clincher or Clincher
	11.1915.087.030	Decal Set 404 Black 650C Complete for One Tubular or Clincher
	11.1915.087.040	Decal Set 808/Disc Black Complete for One Firecrest Tubular or Firecrest Carbon Clincher or Clincher

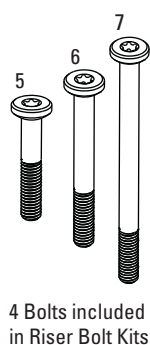


No.	Part Number	Description
-----	-------------	-------------

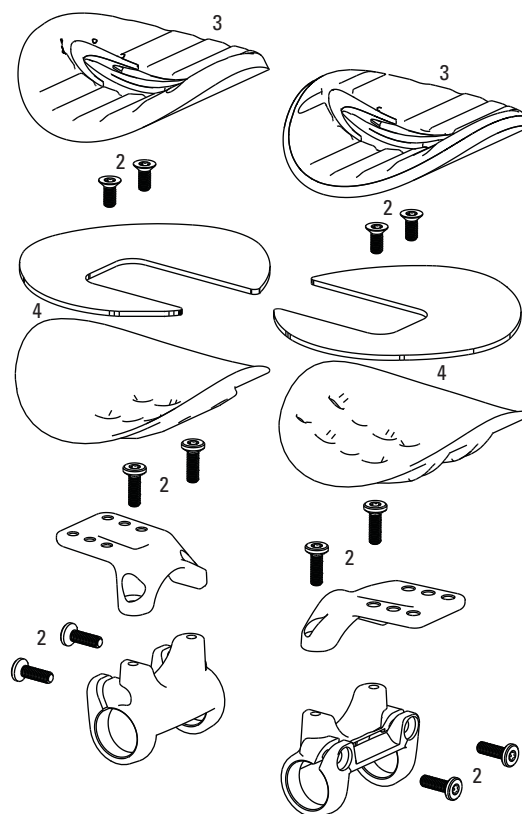
1	11.6600.014.000	Vuka Pad Carbon Base Plate Left (without screws)
2	11.6600.015.000	Vuka Pad Carbon Base Plate Right (without screws)
3	11.6615.000.000	Vuka Clip Lower Clamp and Bolts
4	11.6615.003.010	Zipp Vuka Clip wing Screw Kit
5	11.6615.003.020	Zipp Vuka Clip Pad Wing Screw Kit
ns	11.6515.004.000	Zipp Vuka Aero Shim 26.0 to 31.8
ns	11.6515.004.000	Zipp Vuka Aero Shim 26.0 to 31.8
ns	11.6615.006.020	Zipp Aerobar Brake Lever with Spring
ns	11.6615.007.000	Zipp Vuka Clip Shim 31.8 to 26.0
ns	11.6615.008.000	Zipp Aerobar Cable Guide Stop
ns	11.6615.009.000	Zipp Handlebar Extension Plugs
ns	11.6615.010.000	Draw Bolt and Washer Zipp Vuka Aero
ns	80.1900.011.000	Vuka Grip Tape for VukaAero
ns	80.1900.012.000	Vuka Elbow Pad Wing extensions for VukaAero & VukaClip
ns	80.1900.013.000	Vuka Elbow Pads for VukaAero & VukaClip
ns	80.1900.014.000	Vuka Pad Riser Kit for VukaAero & VukaClip 4mm & 8mm
ns	80.1900.015.000	Vuka Collet Tool for VukaAero & VukaClip



Top Mount Clip



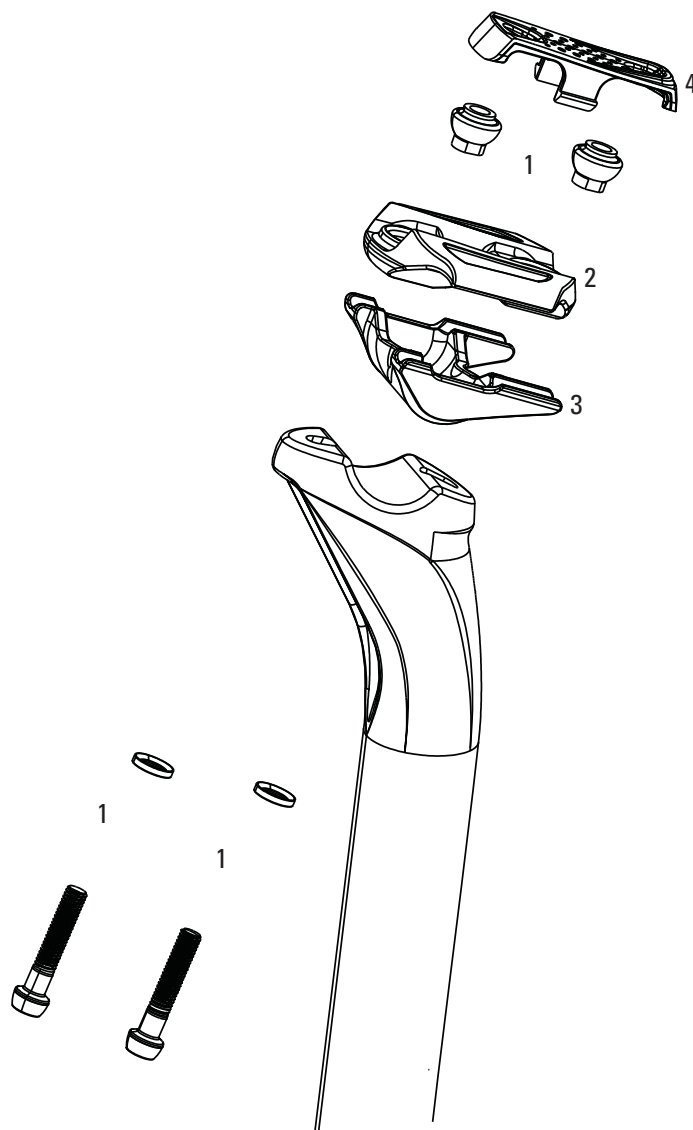
4 Bolts included in Riser Bolt Kits



Low Mount Clip

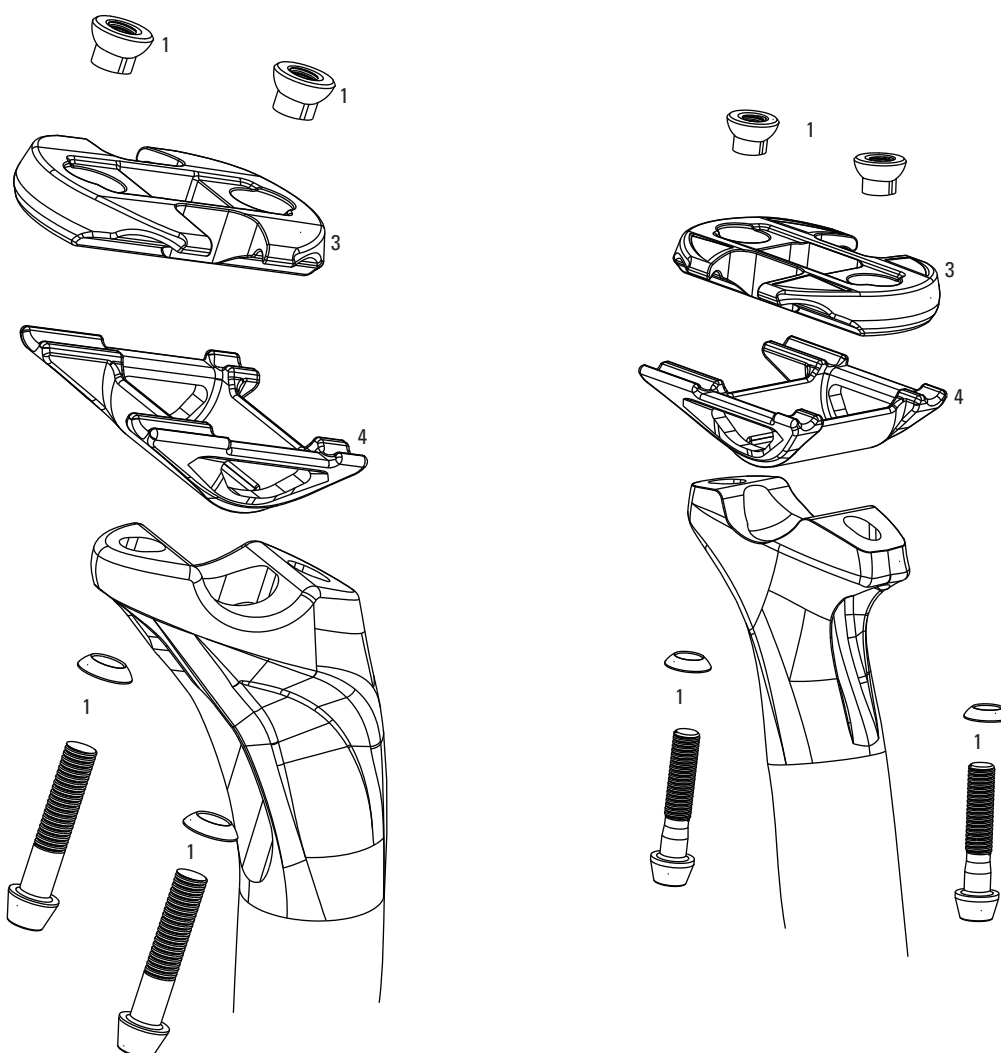
No.	Part Number	Description
1	11.6618.000.000	Vuka Alumina Clip Bolt Kit Top Mount 1 Side
2	11.6618.000.001	Vuka Alumina Clip Bolt Kit Low Mount 1 Side
3	11.6618.001.000	Vuka Alumina Clip Armrest Pad Kit
4	11.6618.001.001	Vuka Alumina Armrest Kit
5	11.6618.002.000	Vuka Alumina Riser Bolt Kit for 10mm
6	11.6618.002.001	Vuka Alumina Riser Bolt Kit for 25mm
7	11.6618.002.002	Vuka Alumina Riser Bolt Kit for 50mm
8	11.6618.003.000	Vuka Alumina/Carbon Extensions End Plugs

## ZIPP CARBON SEATPOSTS



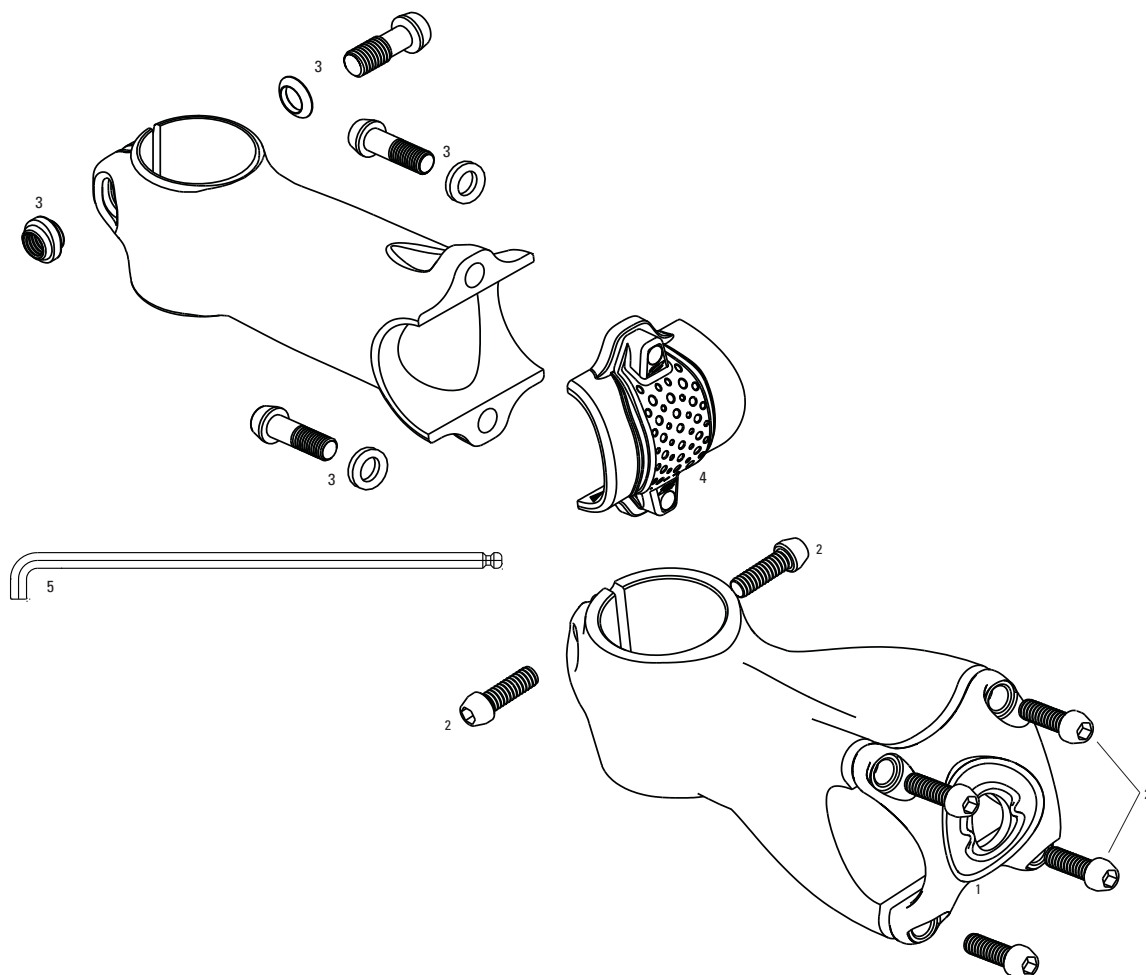
No.	Part Number	Description
1	11.6818.009.000	Seatpost SL Speed Bolts, Nuts, Washers Kit
2	11.6818.010.000	Seatpost SL Speed Top Clamp
3	11.6818.011.000	Seatpost SL Speed Bottom Clamp
4	11.6818.012.000	SP SL Speed Top Cap White
4	11.6818.012.001	SP SL Speed Top Cap Red

# ZIPP ALUMINUM SEATPOSTS

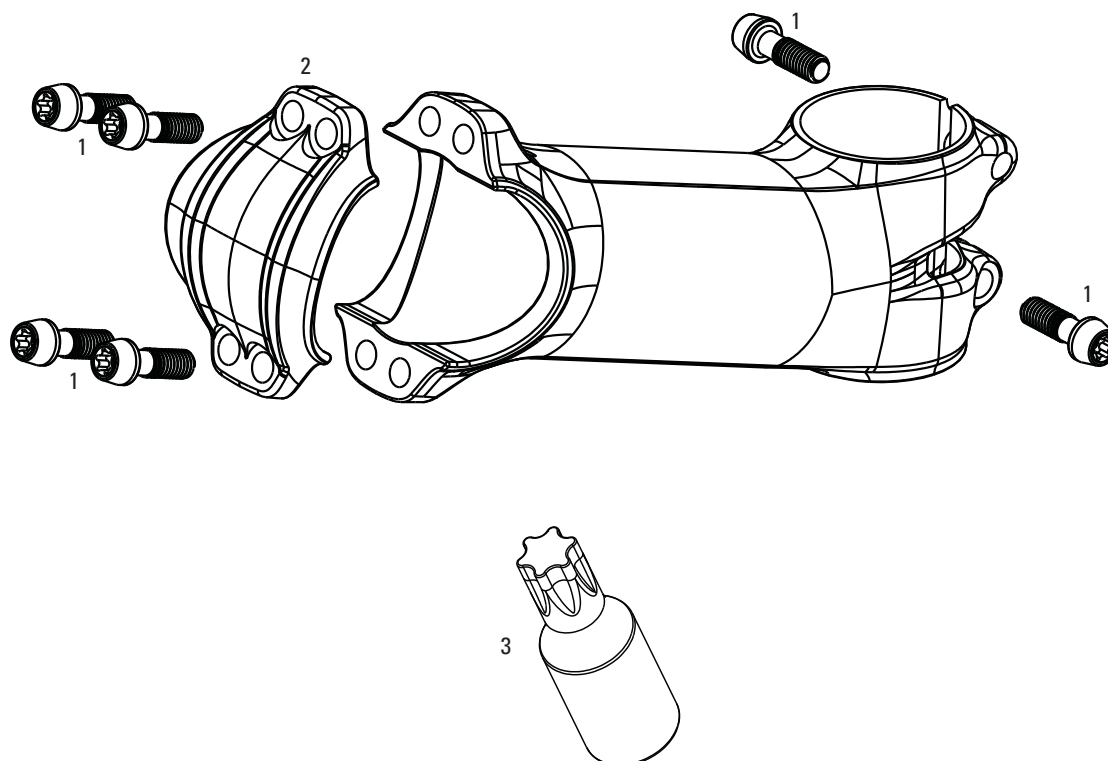


No.	Part Number	Description
1	11.6815.034.000	Seatpost Service Course SL Bolt Kit Ti
1	11.6815.034.001	Seatpost Service Course SL Bolt Kit Ti Beyond Black
1	11.6815.035.000	Seatpost Service Course Bolt Kit Blast Steel Silver
2	11.6815.036.001	Seatpost Service Course SL Top Clamp Zero Offset Shiny Black
3	11.6815.037.000	Seatpost Service Course Top Clamp Blast Black
3	11.6815.037.001	Seatpost Service Course Top Clamp Zero Offset Blast Black
4	11.6815.038.000	Seatpost Service Course SL Bottom Clamp Shiny Black
4	11.6815.039.000	Seatpost Service Course Bottom Clamp Blast Black

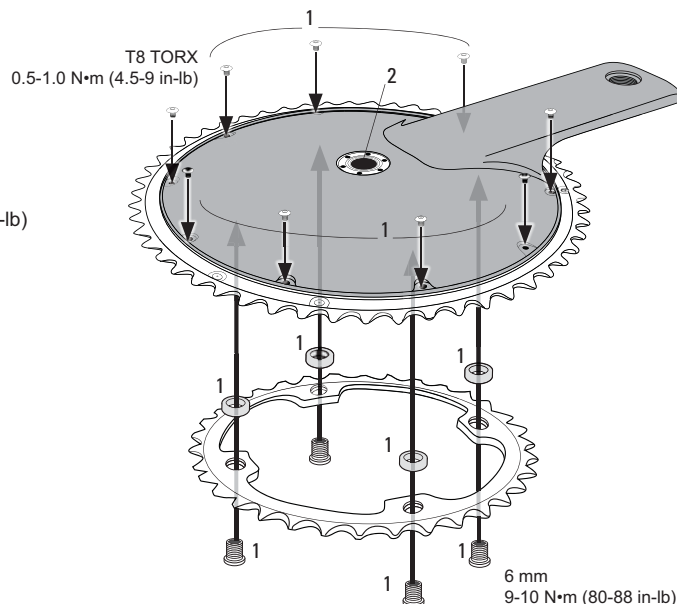
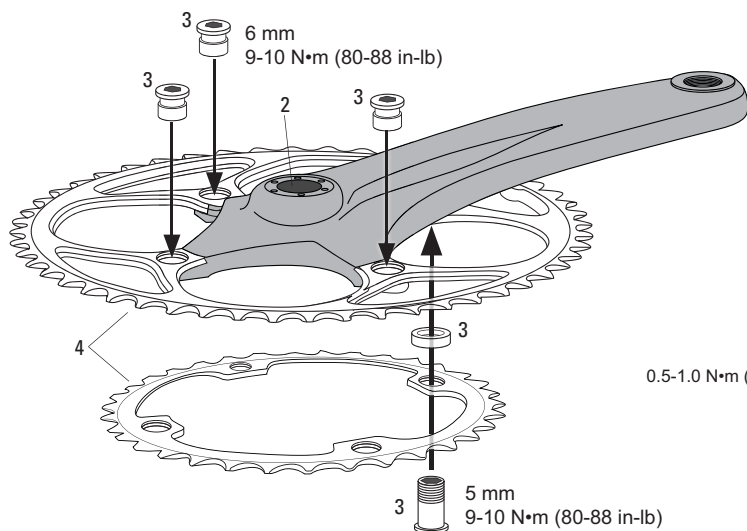




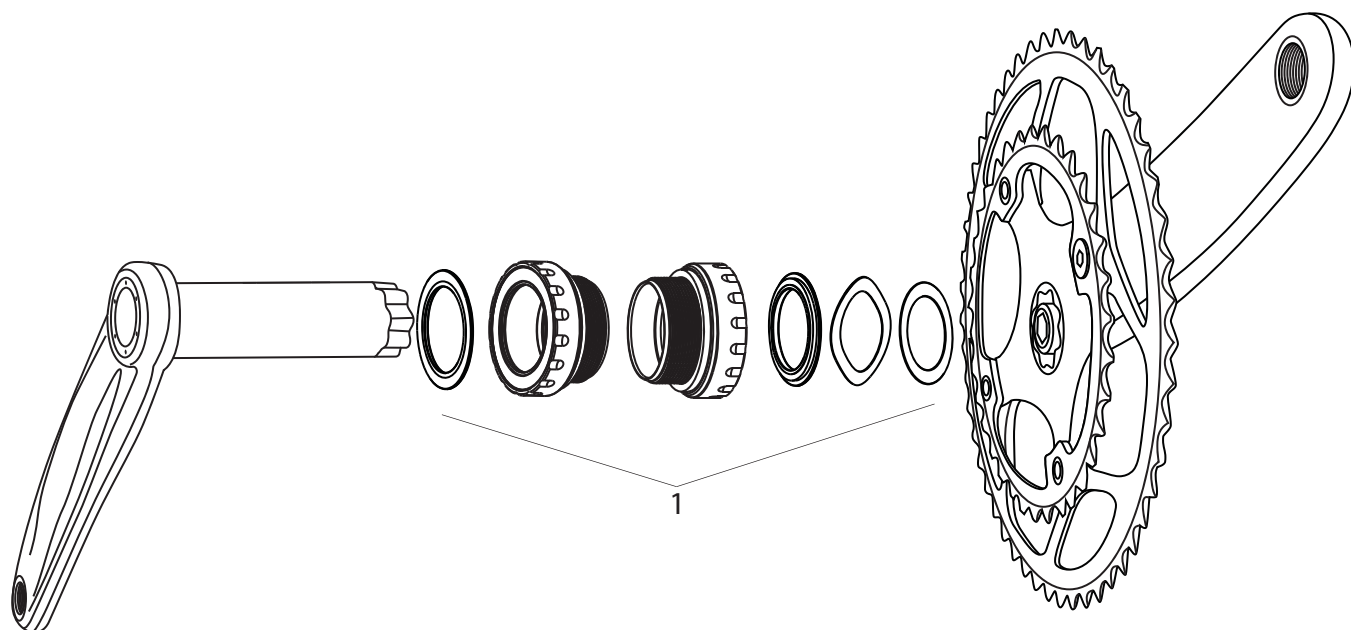
No.	Part Number	Description
1	11.6515.001.000	Zipp 145 Carbon Stem Face Plate Black
2	11.6515.002.000	Zipp 145 Face Plate Bolts Ti Qty 4
ns	11.6515.003.000	Zipp Carbon Stem Top Cap
3	11.6515.009.000	Stem Speed SL Bolt Kit Ti
4	11.6515.010.000	Stem Speed SL Face Plate Black
5	11.6518.001.000	Stem SL Speed 4mm Small Bend Wrench



No.	Part Number	Description
1	11.6515.005.000	Stem Service Course SL Bolt Kit Ti Silver
1	11.6515.005.001	Stem Service Course SL Bolt Kit Ti Beyond Black
1	11.6515.006.000	Stem Service Course Bolt Kit Steel Silver
2	11.6515.007.000	Stem Service Course SL Face Plate/Seatpostacer Shiny Black
2	11.6515.008.000	Stem Service Course Face Plate Black
3	11.6518.000.000	Zipp T25 Torx Tool, 4mm Socket



No.	Part Number	Description
1	00.6100.206.000	VumaChrono Chain Ring Bolt Kit
2	11.6115.557.030	Crank Arm Bolt Black M18 / Self Extracting Cap Red M25 Vuma
3	11.6200.014.000	VumaQuad Chain Ring Bolt Kit
4	11.6200.018.000	VumaQuad 52T/36T Rotor Chainring Set
ns	11.6200.019.000	VumaQuad Crank Spacer Kit
ns	11.6215.199.000	Chain Ring 39tooth 4-bolt Zipp Vuma Quad
ns	11.6215.199.010	Chain Ring 53tooth 4-bolt Zipp Vuma Quad
ns	11.6215.199.020	Chain Ring 34tooth 4-bolt Zipp Vuma Quad
ns	11.6215.199.030	Chain Ring 50tooth 4-bolt Zipp Vuma Quad
ns	11.6215.199.040	Chain Ring 39tooth 4-bolt Zipp Vuma Chrono
ns	11.6215.199.050	Chain Ring 53tooth 4-bolt Zipp Vuma Chrono
ns	11.6215.199.060	Chain Ring 42tooth 4-bolt Zipp Vuma Chrono
ns	11.6215.199.070	Chain Ring 54tooth 4-bolt Zipp Vuma Chrono
ns	11.6215.199.080	Chain Ring 55tooth 4-bolt Zipp Vuma Chrono
ns	11.6400.027.000	VUMA BB30 Ceramic Spacer Kit



No.	Part Number	Description
1	11.6400.020.000	Vuma Quad Bottom Bracket - 68mm - Standard Bearings
1	11.6400.021.000	Vuma Quad Bottom Bracket - 68mm - Ceramic Bearings
1	11.6400.022.000	Vuma Quad Bottom Bracket - 70mm - Standard Bearings
1	11.6400.023.000	Vuma Quad Bottom Bracket - 70mm - Ceramic Bearings
ns	14.6100.001.000	Zipp Bottom Bracket Wrench

# **COPYRIGHT**

This publication includes trademarks and registered trademarks of SRAM LLC designated by the symbols ™ and ®, respectively.

Copyright © 2013 SRAM LLC

## **WORLD HEADQUARTERS**

SRAM LLC  
1333 N. Kingsbury, 4th Floor  
Chicago, Illinois 60642  
United States of America  
Phone: +1-312-664-8800  
Fax: +1-312-664-8826  
E-mail: sramusa@sram.com

## **ASIAN HEADQUARTERS**

SRAM Taiwan  
No. 1598-8 Chung Shan Road  
Shen Kang Hsiang, Taichung  
County 429 Taiwan R.O.C.  
Phone: +886-4-2561-3678  
Fax: +886-4-2561-3686  
E-mail: sramasia@sram.com

## **EUROPEAN HEADQUARTERS**

SRAM Europe  
Paasbosweg 14-16  
3862ZS Nijkerk  
The Netherlands  
Phone: +31-33-450-6060  
Fax: +31-33-457-0200  
E-mail: srameurope@sram.com

**[www.sram.com](http://www.sram.com)**

**world headquarters**

SRAM corporation  
1333 n. kingsbury st., 4th fl  
chicago, il 60622  
phone +1-312-664-8800  
fax +1-312-664-8826

**european headquarters**

SRAM europe  
basicweg 12-d  
3821 br amersfoort  
the netherlands  
phone +31-33-450-6060  
fax +31-33-457-0200

**asian headquarters**

SRAM taiwan  
no. 1598-8 chung shan rd  
shen kang hsiang, taichung  
county road 49 taiwan r.o.c.  
phone +886-4-2564-3678  
fax +886-4-2561-3686