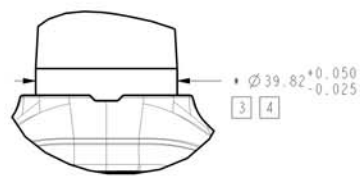
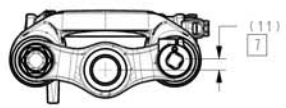
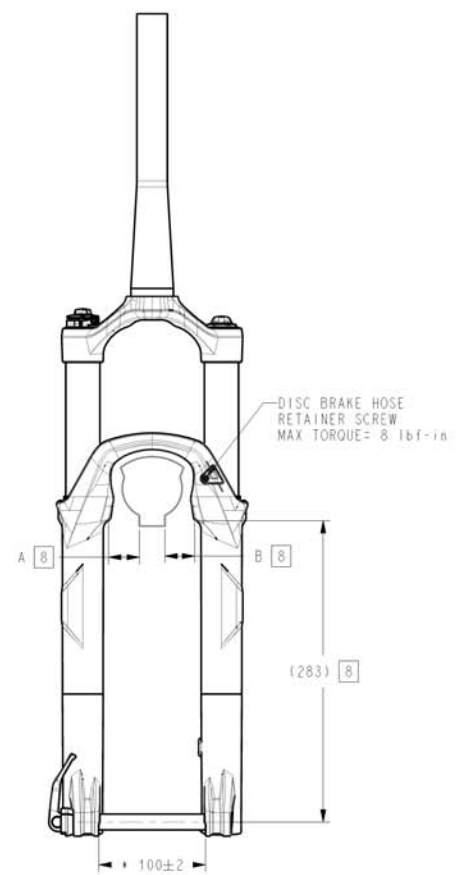
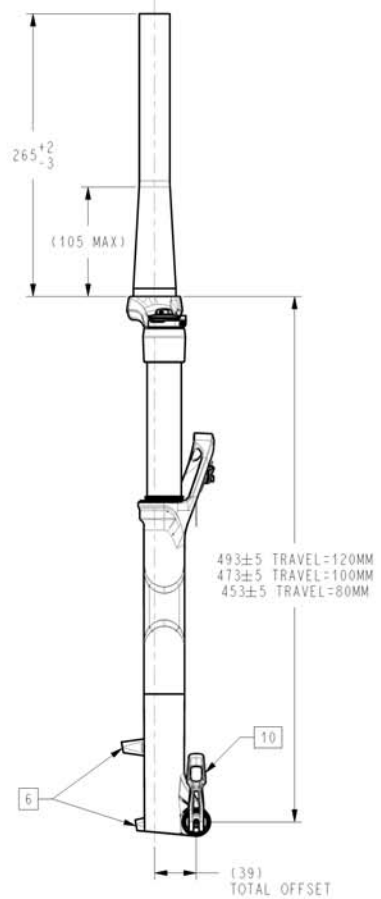
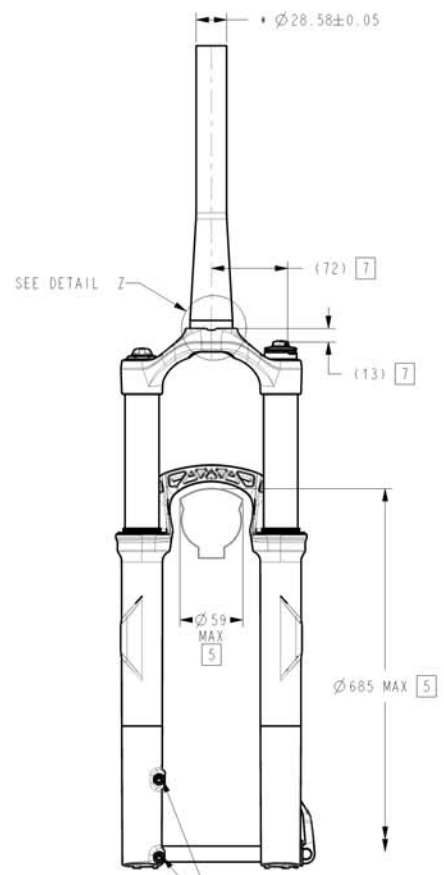


REV	REVISION RECORD			
A	RELEASE			



DETAIL Z  
SCALE 1:1



NOTES (UNLESS OTHERWISE SPECIFIED):

- SRAM RESERVES THE RIGHT TO CHANGE SPECIFICATIONS WITHOUT PRIOR NOTICE. USE LATEST REVISION.
- REFERENCE DIMENSIONS NOTED WITH "( )" ARE FOR CUSTOMER DESIGN INFORMATION ONLY.
- CROWN RACE  $\varnothing$ 'S MEASURED AS AVERAGE OF 3 DIAMETRIC POINTS MINIMUM.
- HEADSET CUP ID MUST BE GREATER THAN STEER TUBE OD +0.3MM MIN
- IMPORTANT: CUSTOMER IS RESPONSIBLE FOR ENSURING MINIMUM TIRE CLEARANCE. DO NOT EXCEED MAXIMUM TIRE ENVELOPE INDICATED ON THIS DRAWING.
- POST TYPE BRAKE CALIPER MOUNT, DIRECT FOR 160MM ROTOR DIA, MAX ROTOR DIA = 215MM.
- ESTIMATED WORST CASE FRAME CLEARANCE. NOTE THAT POINT IS DEFINED IN 3 DIMENSIONS.
- WHEEL CENTER TOLERANCE: |A-B| < 2MM  
DISHED WHEEL OR GAGE MUST BE CLAMPED IN DROPOUTS.  
3D REPRESENTATION FILES (.IGS AND .STP) AVAILABLE UPON REQUEST.
- IMPORTANT CUSTOMER IS RESPONSIBLE FOR ENSURING THAT ROCKSHOX MAXLE SYSTEM IS USED PER SRAM'S OPERATING INSTRUCTIONS

M6X1-6H  $\nabla$ 14 MIN  
BRAKE CALIPER BOLT RECOMMENDED  
FULL THREAD ENGAGEMENT = 9-12mm  
MAX TORQUE = 90 lbf-in (10.2 N-m)

DESIGNED BY: J. STARKEY		FORMAT: A2	SCALE: 1:5	SHEET: 1 / 1
LIFECYCLE STATUS		Released		
DRAWING NAME / DESCRIPTION		USER SPECIFICATION, RBA. 15. T		
DRAWING NUMBER		98-4015-024-400		VERSION
				A.2

ALL DIMENSIONS ARE IN mm  
THIRD ANGLE PROJECTION  
MATERIAL: NA

GEOMETRIC DIMENSIONING AND TOLERANCING TO BE INTERPRETED PER ANSI Y14.5M 1994  
INDICATES THE DIMENSION IS CRITICAL TO THE FORM, FIT OR FUNCTION OF THE PART OR PRODUCT  
UNTOLERANCED LENGTH DIMENSIONS  
LENGTH DIMENSIONS - TOLERANCE  
From 0-5 (0.00-0.125) A-0.1  
From 6-30 (0.125-1.25) A-0.1  
From 30-100 (1.25-4.0) A-0.15  
From 100-160 (4.0-6.5) A-0.2  
UNTOLERANCED ANGLE DIMENSIONS

CONFIDENTIAL - THIS DRAWING CONTAINS INFORMATION THAT IS PROPRIETARY TO SRAM CORPORATION AND MAY NOT BE DISCLOSED WITHOUT PERMISSION.