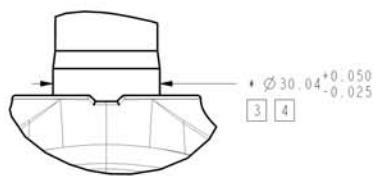
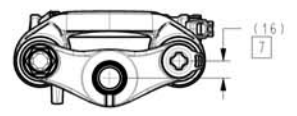
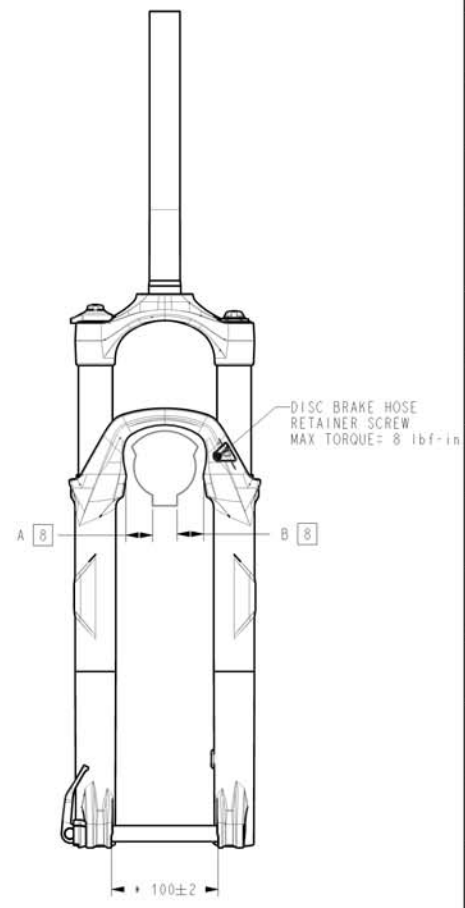
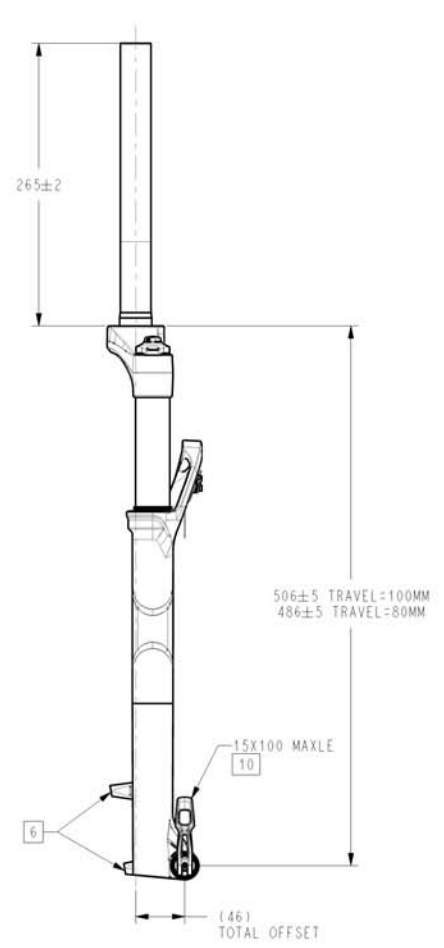
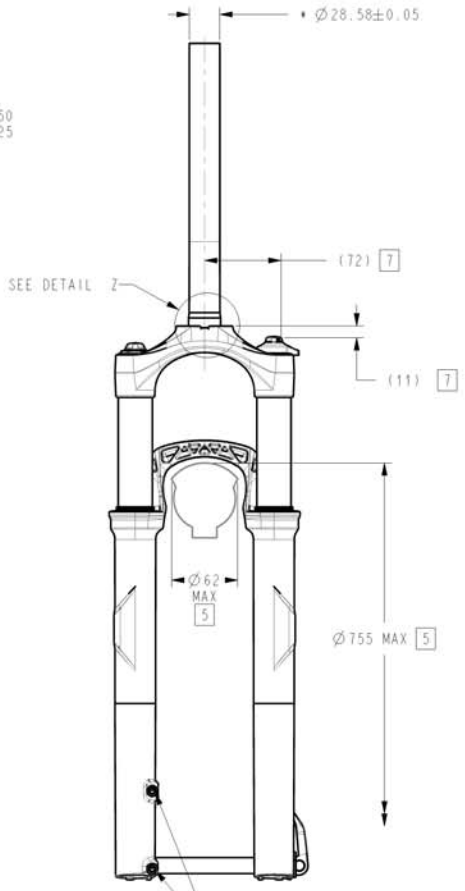


REV	REVISION RECORD
A	RELEASE



DETAIL Z
SCALE 1:1



NOTES (UNLESS OTHERWISE SPECIFIED):

- SRAM RESERVES THE RIGHT TO CHANGE SPECIFICATIONS WITHOUT PRIOR NOTICE. USE LATEST REVISION.
 - REFERENCE DIMENSIONS NOTED WITH "()" ARE FOR CUSTOMER DESIGN INFORMATION ONLY.
 - CROWN RACE \varnothing 'S MEASURED AS AVERAGE OF 3 DIAMETRIC POINTS MINIMUM.
 - HEADSET CUP ID MUST BE GREATER THAN STEER TUBE OD +0.3MM MIN
 - IMPORTANT: CUSTOMER IS RESPONSIBLE FOR ENSURING MINIMUM TIRE CLEARANCE. DO NOT EXCEED MAXIMUM TIRE ENVELOPE INDICATED ON THIS DRAWING.
 - POST TYPE BRAKE CALIPER MOUNT, DIRECT FOR 160MM ROTOR DIA, MAX ROTOR DIA = 215MM.
 - ESTIMATED WORST CASE FRAME CLEARANCE. NOTE THAT POINT IS DEFINED IN 3 DIMENSIONS.
 - WHEEL CENTER TOLERANCE: |A-B| < 2MM. DISHED WHEEL OR GAGE MUST BE CLAMPED IN DROPOUTS. 3D REPRESENTATION FILES (.IGS AND .STP) AVAILABLE UPON REQUEST.
 - IMPORTANT CUSTOMER IS RESPONSIBLE FOR ENSURING THAT ROCKSHOX MAXLE SYSTEM IS USED PER SRAM'S OPERATING INSTRUCTIONS.
- M6X1-6H ∇ 14 MIN
BRAKE CALIPER BOLT RECOMMENDED
FULL THREAD ENGAGEMENT = 9-12mm
MAX TORQUE = 90 lbf-in (10.2 N-m)

DESIGNED BY: J. BALTES		FORMAT: A2	SCALE: 1:5	SHEET: 1 / 1
LIFECYCLE STATUS		Under Review		
DRAWING NAME - DESCRIPTION		USER SPECIFICATION, REBA, 1529, 11/8		
DRAWING NUMBER		98-4015-026-300		VERSION
				A.1

ALL DIMENSIONS ARE IN mm
THIRD ANGLE PROJECTION
MATERIAL: NA

GEOMETRIC DIMENSIONING AND TOLERANCING TO BE INTERPRETED PER ANSI Y14.5M 1994
* INDICATES THE DIMENSION IS CRITICAL TO THE FORM, FIT OR FUNCTION OF THE PART OR PRODUCT
UNFRAKED LENGTH DIMENSIONS
LENGTH DIMENSIONS - TOLERANCE
From: 0.5 to 30: ±0.25
Over: 30 to 100: ±0.5
Over: 100 to 300: ±1.0
OVERLAPKED ANGLE DIMENSIONS

CONFIDENTIAL - THIS DRAWING CONTAINS INFORMATION THAT IS PROPRIETARY TO SRAM CORPORATION AND MAY NOT BE DISCLOSED WITHOUT PERMISSION.