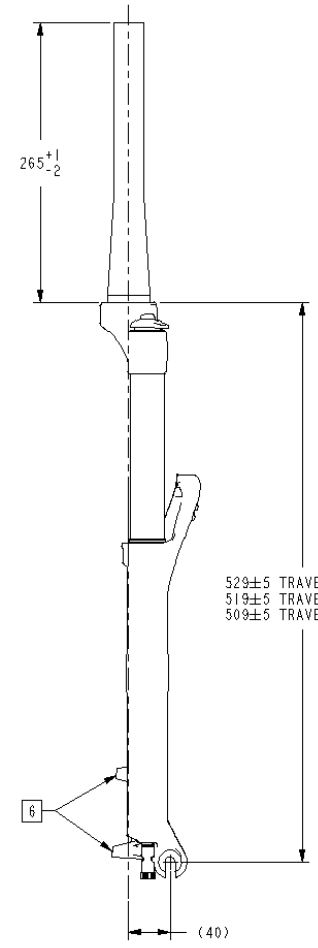
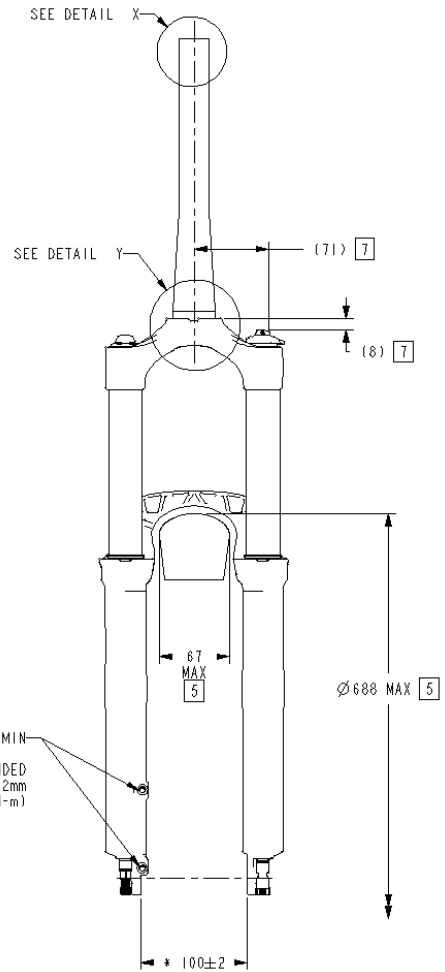
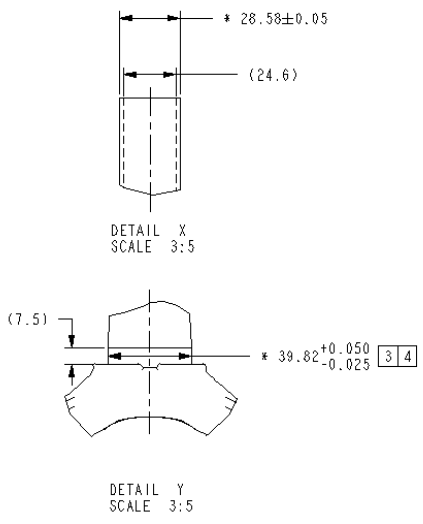
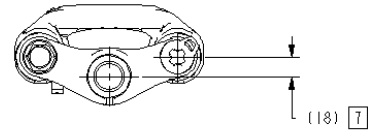
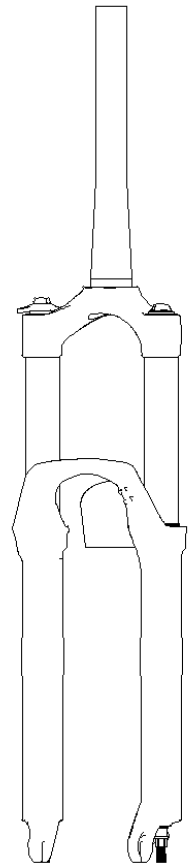
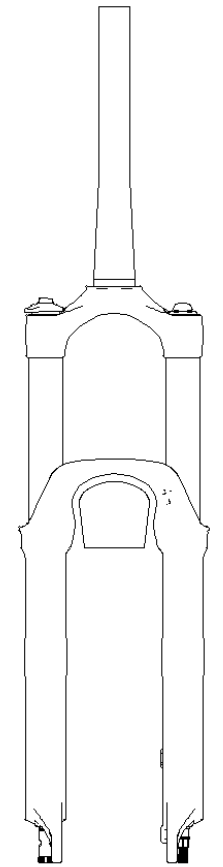


REV	REVISION RECORD
A	ECN 3003203 RELEASE
B	ECN 3003362 CHANGE: Ø 688 MAX WAS Ø 691 MAX (69)



529±5 TRAVEL=150MM
519±5 TRAVEL=140MM
509±5 TRAVEL=130MM



M6X1-6H ∇14 MIN
BRAKE CALIPER BOLT RECOMMENDED
FULL THREAD ENGAGEMENT = 9-12mm
MAX TORQUE = 90 in-lbf (10.2 N-m)

- NOTES (UNLESS OTHERWISE SPECIFIED):
- SRAM RESERVES THE RIGHT TO CHANGE SPECIFICATIONS WITHOUT PRIOR NOTICE.
 - REFERENCE DIMENSIONS NOTED WITH "()" ARE FOR CUSTOMER DESIGN INFORMATION ONLY.
 - CROWN RACE Ø'S MEASURED AS AVERAGE OF 3 DIAMETRIC POINTS MINIMUM.
 - HEADSET CUP ID MUST BE GREATER THAN STEER TUBE OD +0.3MM.
 - IMPORTANT: CUSTOMER IS RESPONSIBLE FOR ENSURING MINIMUM TIRE CLEARANCE. DO NOT EXCEED MAXIMUM TIRE ENVELOPE INDICATED ON THIS DRAWING.
 - POST TYPE BRAKE CALIPER MOUNT, DIRECT FOR 160MM ROTOR DIA. MAX ROTOR DIA = 215MM.
 - FORK / FRAME CLEARANCE (WORST CASE)
 - 3D REPRESENTATION FILES (.IGS AND .STP) AVAILABLE UPON REQUEST.

ALL DIMENSIONS ARE mm		GEOMETRIC DIMENSIONS ARE TOLERANCES TO BE INTERPRETED PER ANSI Y14.5M 1994		DESIGNED BY: J. BALTES	
THIRD ANGLE PROJECTION		* INDICATES THE DIMENSION IS CRITICAL TO THE FORM, FIT OR FUNCTION OF THE PART OR PRODUCT		FORMAT: A2	
MATERIAL		LIFECYCLE STATUS		SCALE: 2:25	
		Under Review		SHEET: 1 / 1	
		USER SPECIFICATION, RVL Q, TAPR		DRAWING NUMBER	
		US-4015-023-400		VERSION	
				B.3	