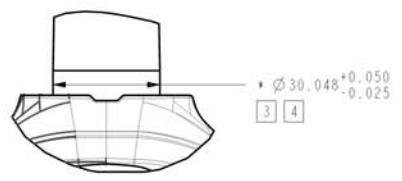
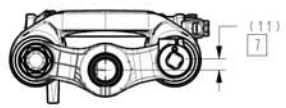
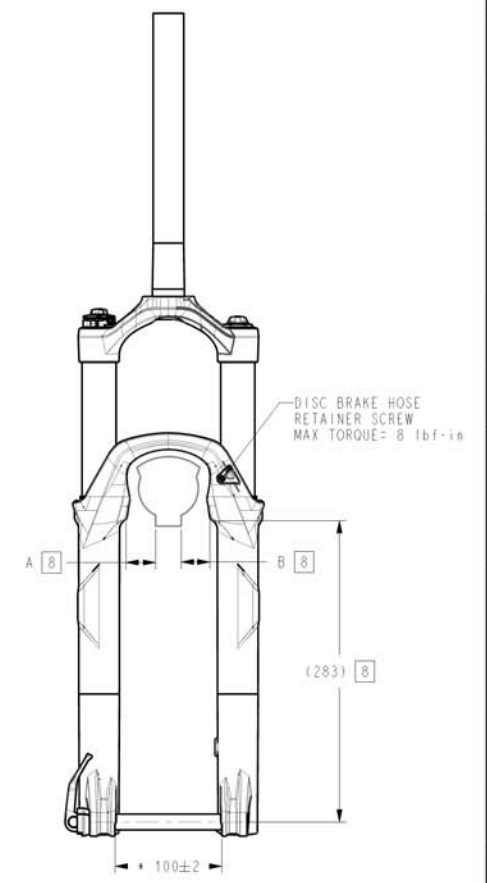
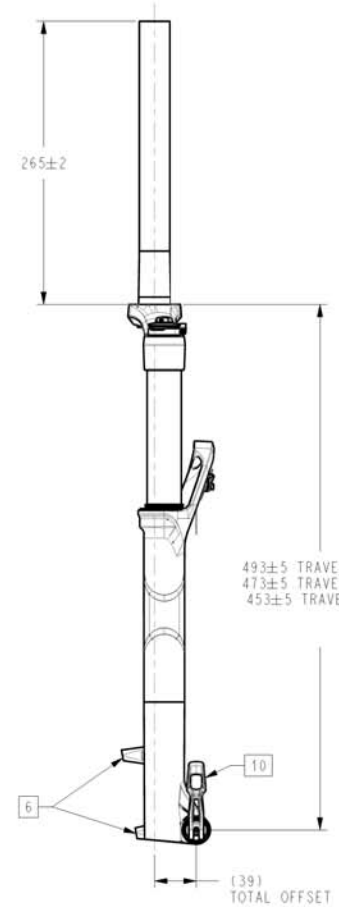
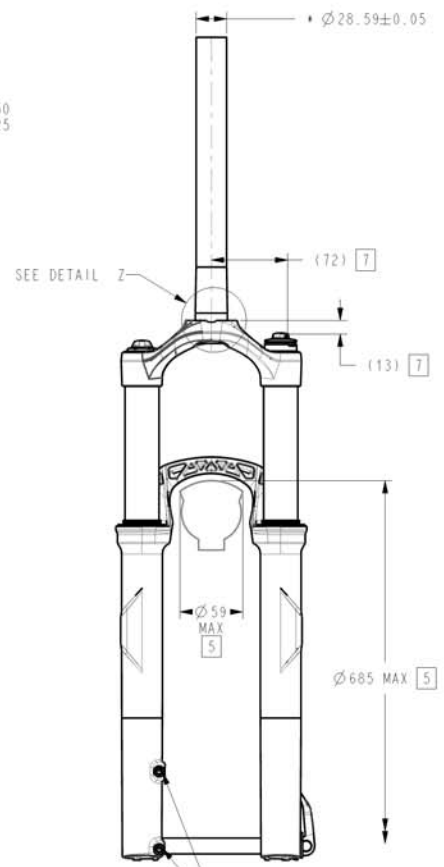


REV	REVISION RECORD
A	RELEASE



DETAIL Z
SCALE 1:1



NOTES (UNLESS OTHERWISE SPECIFIED):

1. SRAM RESERVES THE RIGHT TO CHANGE SPECIFICATIONS WITHOUT PRIOR NOTICE. USE LATEST REVISION.
2. REFERENCE DIMENSIONS NOTED WITH "()" ARE FOR CUSTOMER DESIGN INFORMATION ONLY.
3. CROWN RACE \varnothing 'S MEASURED AS AVERAGE OF 3 DIAMETRIC POINTS MINIMUM.
4. HEADSET CUP ID MUST BE GREATER THAN STEER TUBE OD +0.3MM MIN
5. IMPORTANT: CUSTOMER IS RESPONSIBLE FOR ENSURING MINIMUM TIRE CLEARANCE. DO NOT EXCEED MAXIMUM TIRE ENVELOPE INDICATED ON THIS DRAWING.
6. POST TYPE BRAKE CALIPER MOUNT, DIRECT FOR 160MM ROTOR DIA. MAX ROTOR DIA = 215MM.
7. ESTIMATED WORST CASE FRAME CLEARANCE NOTE THAT POINT IS DEFINED IN 3 DIMENSIONS.
8. WHEEL CENTER TOLERANCE: |A-B| <2MM
9. DISHED WHEEL OR GAGE MUST BE CLAMPED IN DROPOUTS. 3D REPRESENTATION FILES (.IGS AND .STP) AVAILABLE UPON REQUEST.
10. IMPORTANT CUSTOMER IS RESPONSIBLE FOR ENSURING THAT ROCKSHOX MAXLE SYSTEM IS USED PER SRAM'S OPERATING INSTRUCTIONS

M6X1-6H ∇ 14 MIN
BRAKE CALIPER BOLT RECOMMENDED
FULL THREAD ENGAGEMENT = 9-12mm
MAX TORQUE = 90 lbf-in (10.2 N-m)

DESIGNED BY: J. STARKEY		FORMAT: A2	SCALE: 15	SHEET: 1 / 1
LIFECYCLE STATUS		Released		
DRAWING NAME / DESCRIPTION: USER SPECIFICATION, RBA, 15, 1 1/8				
DRAWING NUMBER: 98-4015-024-300		VERSION: A.2		

DATE	NA	UNTOOLRANKED (LENGTH DIMENSIONS)
LENGTH DIMENSIONS	11	UNTOOLRANKED
FROM	0.5	0.1
TO	6	0.1
TO	20	0.1
TO	100	0.1
UNTOOLRANKED (ANGLE DIMENSIONS)	0	0.1

ALL DIMENSIONS ARE IN mm	GEOMETRIC DIMENSIONING AND TOLERANCING TO BE INTERPRETED PER ANSI Y14.5M 1994
THIRD ANGLE PROJECTION	* INDICATES THE DIMENSION IS CRITICAL TO THE FORM, FIT OR FUNCTION OF THE PART OR PRODUCT
MATERIAL: NA	