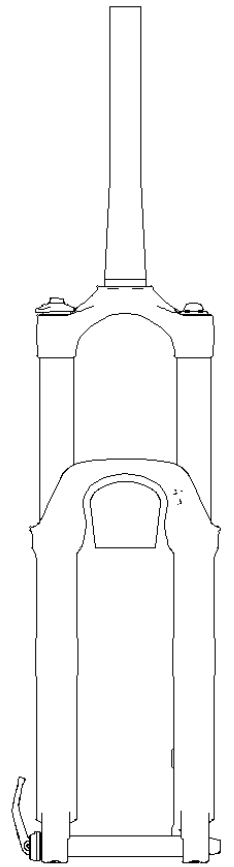
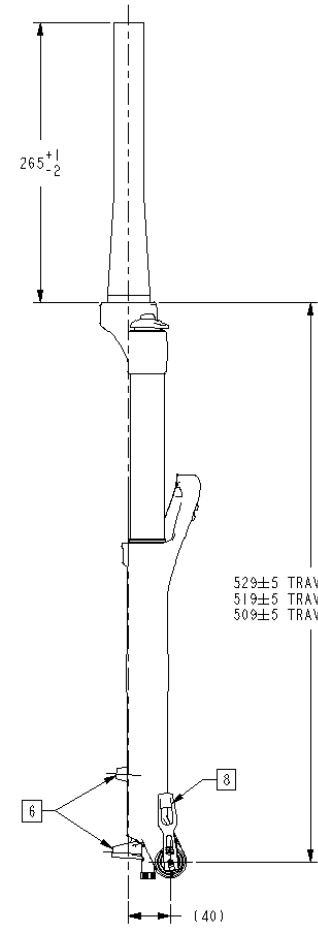
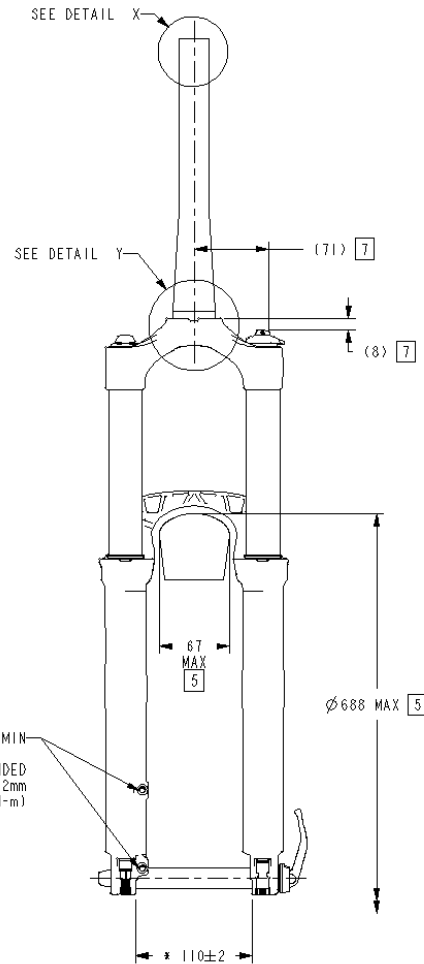
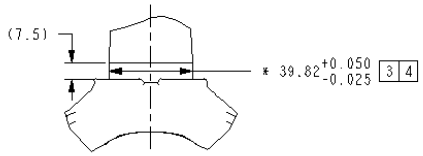
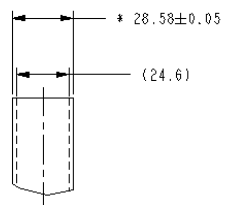
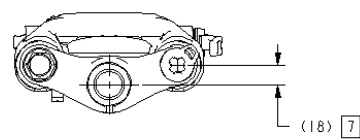
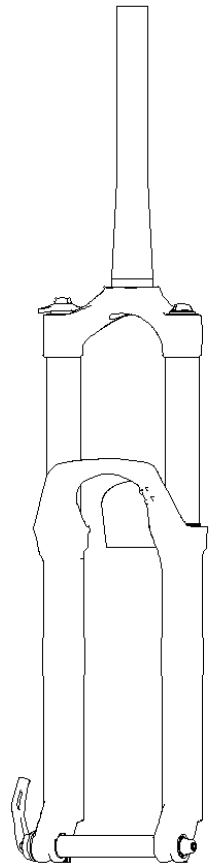


REV	REVISION RECORD
A	ECN 3003203 RELEASE
B	ECN 3003362 CHANGE: Ø 688 MAX WAS Ø 691 MAX (69)



529±5 TRAVEL=150MM
 519±5 TRAVEL=140MM
 509±5 TRAVEL=130MM

M6X1-6H ∇14 MIN
 BRAKE CALIPER BOLT RECOMMENDED
 FULL THREAD ENGAGEMENT = 9-12mm
 MAX TORQUE = 90 in-lbf (10.2 N-m)

NOTES (UNLESS OTHERWISE SPECIFIED):

- SRAM RESERVES THE RIGHT TO CHANGE SPECIFICATIONS WITHOUT PRIOR NOTICE.
- REFERENCE DIMENSIONS NOTED WITH "()" ARE FOR CUSTOMER DESIGN INFORMATION ONLY.
- CROWN RACE Ø'S MEASURED AS AVERAGE OF 3 DIAMETRIC POINTS MINIMUM.
- HEADSET CUP ID MUST BE GREATER THAN STEER TUBE OD +0.3MM.
- IMPORTANT: CUSTOMER IS RESPONSIBLE FOR ENSURING MINIMUM TIRE CLEARANCE. DO NOT EXCEED MAXIMUM TIRE ENVELOPE INDICATED ON THIS DRAWING.
- POST TYPE BRAKE CALIPER MOUNT, DIRECT FOR 160MM ROTOR DIA. MAX ROTOR DIA = 215MM.
- FORK / FRAME CLEARANCE (WORST CASE)
- IMPORTANT: CUSTOMER IS RESPONSIBLE FOR ENSURING THAT ROCKSHOX MAXLE SYSTEM IS USED PER SRAM'S OPERATING INSTRUCTIONS (SEE USER MANUAL)
- 3D REPRESENTATION FILES (.IGS AND .STP) AVAILABLE UPON REQUEST.

DESIGNED BY: J. BALTES		FORMAT: A2	SCALE: 2:25	SHEET: 1 / 1
LIFECYCLE STATUS		Under Review		
USER SPECIFICATION, RVL T, TAPR		DRAWING NUMBER: US-4015-023-300		
DRAWING NUMBER: US-4015-023-300		VERSION: B.3		

ALL DIMENSIONS ARE mm	GEOMETRIC DIMENSIONS AND TOLERANCES TO BE INTERPRETED PER ANSI Y14.5M 1994
THIRD ANGLE PROJECTION	* INDICATES THE DIMENSION IS CRITICAL TO THE FORM, FIT OR FUNCTION OF THE PART OR PRODUCT
TASS (P)	UNLESS OTHERWISE SPECIFIED
PATERIAL	LENGTH DIMENSIONS - TOLERANCE
	0-150 mm 0.15
	150-300 mm 0.30
	300-600 mm 0.60
	600-900 mm 0.90
	900-1200 mm 1.20
	OVER 1200 mm 1.50
	ANGLE DIMENSIONS - TOLERANCE
	± 0.5